

Sandpiper



DESTINATION TRAILERS



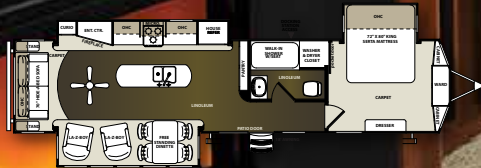
travel anywhere

DSI
20th Annual RVDA DEALER
SATISFACTION INDEX
AWARD WINNER



393RL

TRAVEL ANYWHERE



YOUR DESTINATION FOR COMFORT.
393RL SADDLE INTERIOR



393CK

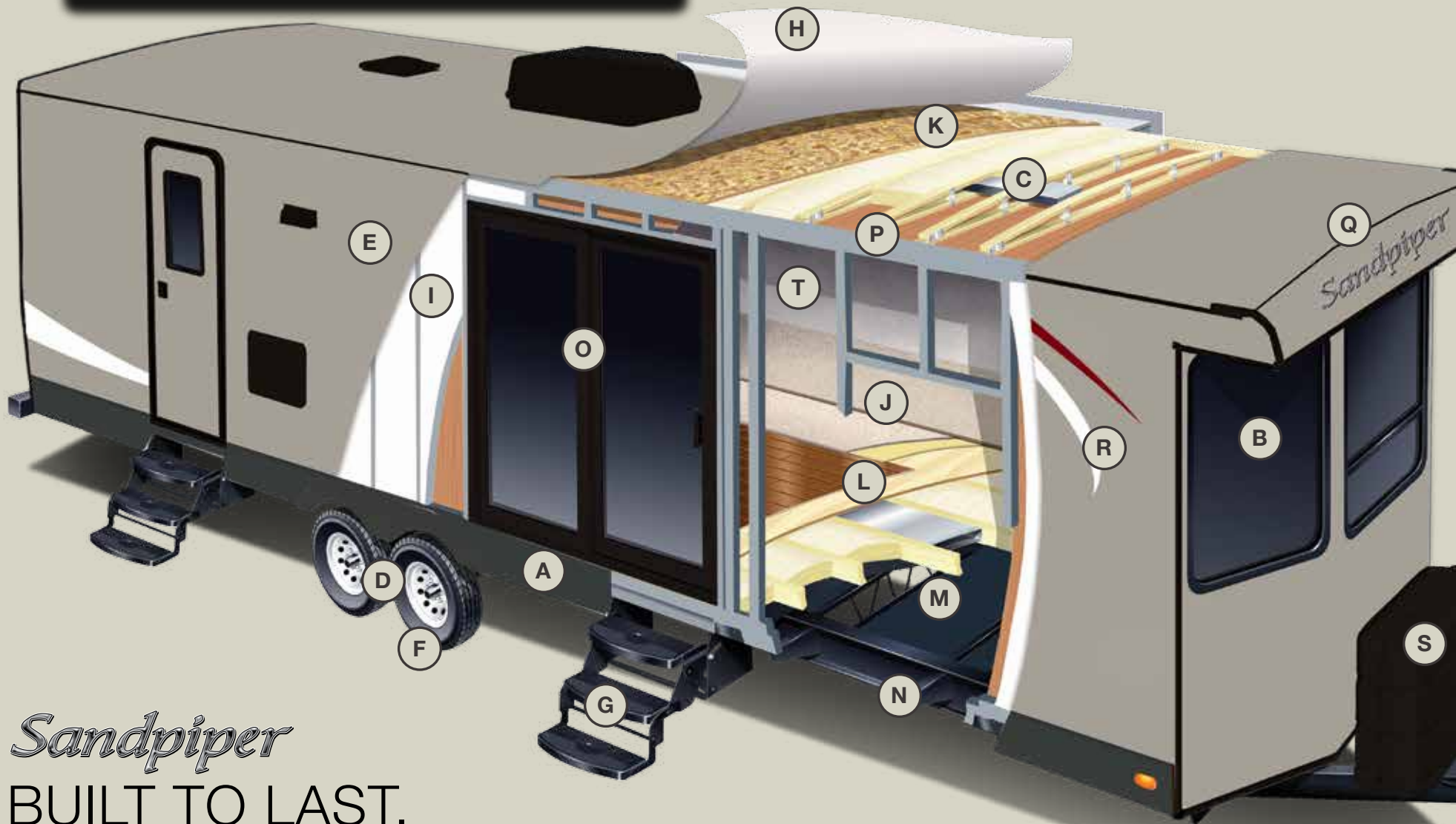
TRAVEL ANYWHERE



YOUR DESTINATION FOR FUN.
393CK DESIGNER INTERIOR



SANDPIPER CONSTRUCTION

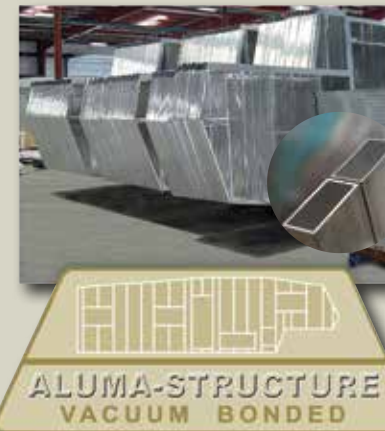


Sandpiper

BUILT TO LAST.

The Sandpiper is built to last using only the best materials to ensure that your coach is in it for the long haul. Careful engineering, well appointed craftsmanship and an uncompromising sense of pride go into every destination trailer that we produce.

- A. ROLLED ALUMINUM SIDED SKIRTING
- B. SAFETY GLASS TINTED WINDOWS (80%)
- C. DUCTED 15K BTU AIR CONDITIONING
- D. DEXTER AXLES WITH AUTO ADJUST BRAKES
- E. LAMINATED VACUUM BONDED ALUMINUM SIDEWALLS
- F. E RATED RADIAL TIRES
- G. HICKORY SPRINGS™ RADIUS ENTRY STEPS
- H. SEAMLESS RUBBER ROOF (12 YR. WARRANTY)
- I. BLOCK FOAM INSULATION
- J. SHAW R2X RESIDENTIAL STAIN RESIST CARPET W/PADDING
- K. 3/8" ROOF DECKING (FULL WALK-ON ROOF)
- L. 5/8" TONGUE AND GROOVE PLYWOOD FLOORING
- M. ENCLOSED HEATED UNDERBELLY
- N. I-BEAM POWDER-COATED FRAME
- O. 60" PATIO DOOR WITH VERTICAL BLINDS
- P. RADIUS INTERIOR CEILINGS
- Q. SLEEK RADIUS ROOF
- R. HIGH GLOSS GEL-COATED COLOR MATCHED FIBERGLASS EXTERIOR
- S. TWO (2) 30 LB. LP TANKS



The Sandpiper has a Welded Aluminum Superstructure that is regarded as the Industry's finest, pictured left is the heavier gauge aluminum tubing used by Sandpiper vs. The competitions lighter gauge aluminum.

SANDPIPER DESTINATION FEATURES



Handcrafted fascia gives the slide-out a distinguished look.



Serta™ memory foam mattress is a Forest River exclusive feature.



Jensen AM/FM CD/DVD stereo comes standard in the Sandpiper.



The tri-fold hide-a-bed offers more sleeping options. (Standard per floorplan)



Contemporary ceiling fan.



Real wood drawers on ball bearing drawer glides for plenty of storage.



Enjoy the warmth and comfort of the electric fireplace. (Per floorplan)



Contemporary aluminum rims with E-rated radial tires.



Control the temperature with the dual zone Dometic thermostat.



Relax in comfort in a La-Z-Boy. (Standard per floorplan).



Theater seating with footrests and console (Per floorplan).



Porcelain foot flush toilet, easy to use, easy to clean.

STANDARDS / OPTIONS

EXTERIOR FEATURES

- High gloss gel coated color matched exterior fiberglass
- Enclosed and heated dump valves
- Large tinted windows with 80/20 UV prohibitor
- Dexter auto adjust brakes
- Hickory Springs™ radius triple steps with 9" riser (no pinched fingers)
- Dometic™ "One-Touch" electric awning with adjustable arms, and integrated LED light
- 16" Radial tires-E Rated
- Automotive-style fender skirts
- Hitch light
- Porch light with interior switch
- Patio recreation light with interior switch
- 30 lb. double LP tanks with auto change over
- 2 exterior speakers
- Rain gutters with extra long drip spouts (prevents black streaking)
- Exterior folding grab handle
- 60" Patio door

INTERIOR FEATURES

- 94" interior height with 6'4" slide heights
- Radius "barreled" ceiling
- Shaw® R2x stain resistant carpet
- Beauflor® linoleum
- La-Z-Boy recliners
- Four color coordinated interiors (Saddle, Storm, Kahlua, Designer)
- Full extension ball bearing drawer glides
- Stone cast under mounted kitchen sink

- Washer/dryer prep (select floorplans)
- Handmade cabinetry with screwed lumber core stile construction
- Self edged residential countertops
- Dual zone A/C prep (living room and bedroom)
- Recessed residential LED lighting
- Colored shower surround with etched tile pattern
- Upgraded adjustable shower head with shelf
- Accent paneling in slideouts
- Accent lighting over dinette
- Walk-in shower (select models)
- Crown molding over kitchen cabinets
- Extra large picture windows throughout
- Vented side windows in slideouts
- TV antenna with booster
- Surround sound TV hook-up
- Solid wood drawer fronts with birch sides
- Upgraded raised panel cabinet doors with designer rails
- Bedroom slideout fascia
- Serta® memory foam mattress
- 18 cu. ft. Stainless refrigerator
- Stainless steel kitchen package
- 39" flat screen LED/HD TV
- Jensen® AM/FM CD/DVD player with MP3 capabilities and Bluetooth
- Home theater surround sound system
- Designer window treatment accented per decor
- Ceiling fan
- Hide-a-bed sofa with tri-fold
- Residential carpeting

- Center mounted A/C unit for even cooling
- Quilted bedspread
- Home decor package
- Trash receptacle in kitchen

APPLIANCES/SYSTEM

- Ducted Dometic® 15K A/C with quick cool
- Thermostat for living room and bedroom A/C
- Floor ducted 35,000 BTU furnace
- Three burner High output range with 22" oven
- 18 cubic ft. refrigerator
- Interior monitor panel for holding tanks
- Interior thermostat for heating and cooling
- Flush floor hydraulic slideouts (per floorplan)
- Satellite and cable hookup with RG-6 cable for high quality picture
- Porcelain foot flush toilets
- Full coach water filtration system
- 10 Gal. DSI water heater
- 65 Amp converter
- Water filter system
- Fantastic fan in bath

CONSTRUCTION

- Welded aluminum-framed, vacuum bonded laminated superstructure
- 2" x 3" floor joists 12" on center
- 5/8" tongue & groove plywood floor decking
- 3/8" roof decking (full walk-on roof)
- Cambered powder coated frame

- with rust prohibitor
- Fully enclosed heated underbelly
- 5" truss roof rafters
- R-10 sidewall construction

POPULAR OPTIONS

- Solid surface countertops in kitchen
- Free-standing dinette with 4 chairs
- Washer and dryer (per floorplan)
- Sofa IPO bottom bunk (per floorplan)
- Second air conditioner-bedroom
- Fantastic fan with power hood operated with wall switch
- 12 Volt heated holding tanks
- R-38e Insulation package
- Beauflor® wood plank pattern linoleum
- Central vacuum
- Bedroom ceiling fan
- Roof ladder

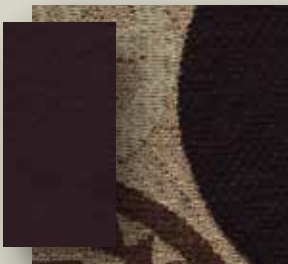
FOR YOUR SAFETY

- Smoke alarm
- Fire extinguisher
- Breakaway switch (battery hook-up required)
- Dead-bolt lock on entry door
- Liquid propane (LP) gas detector
- Fire escape windows

SANDPIPER SIGNATURE PACKAGE

- Shaw® stain resistant carpet
- Serta® memory foam mattress
- Radius 94" cathedral ceilings
- La-Z-Boy® recliners (where available)
- "One Touch" Dometic® electric awning w/LED lights"
- Stainless steel kitchen package
- 15K BTU air conditioner
- King bed standard
- Ceiling fan in living room
- Décor package (clock, pictures, coat hook)
- 50 amp service
- High gloss gel coated fiberglass color matched exterior
- 10 gal. G/E water heater w/DSI
- Residential pullout kitchen faucet
- 18 cubic foot residential refer (stainless)
- 39" Flat screen television
- Tinted patio door
- Jensen AM/FM CD/DVD player w/ Bluetooth
- Washer/dryer prep (where available)
- Fantastic fan in bathroom
- Slam lock baggage doors
- Tri-fold hide-a-bed
- Designer tile Beauflor®

Sandpiper



SADDLE INTERIOR



STORM INTERIOR



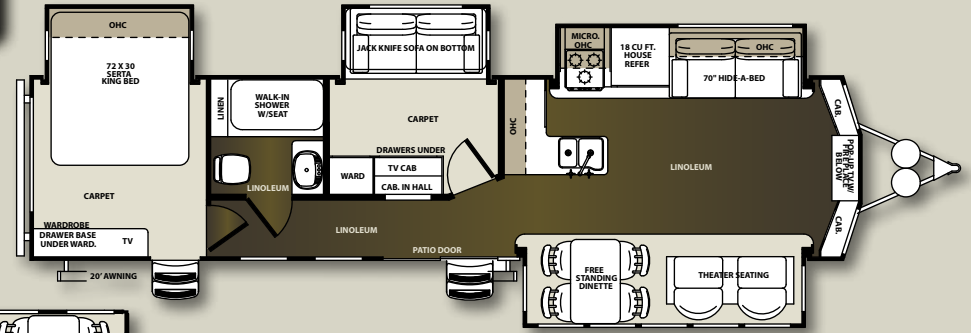
KAHLUA INTERIOR



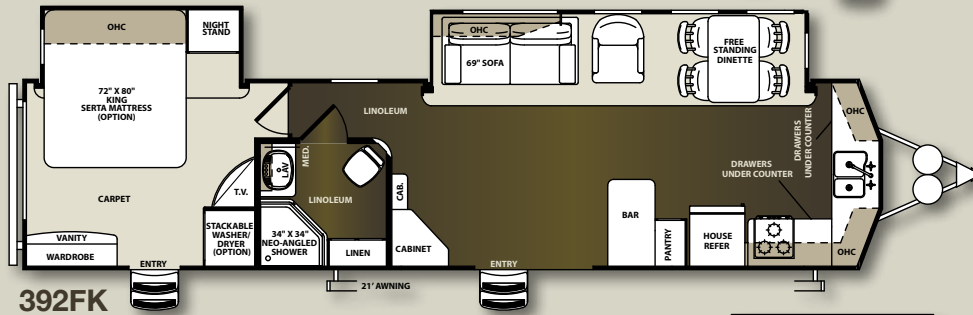
DESIGNER INTERIOR

FLOORPLANS

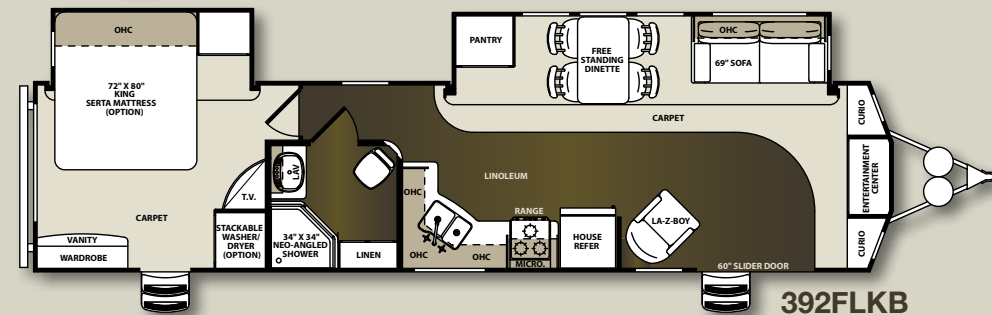
Bunkhouse Front Kitchen
Theater Seating Standard
Walk-in Shower w/
Seat



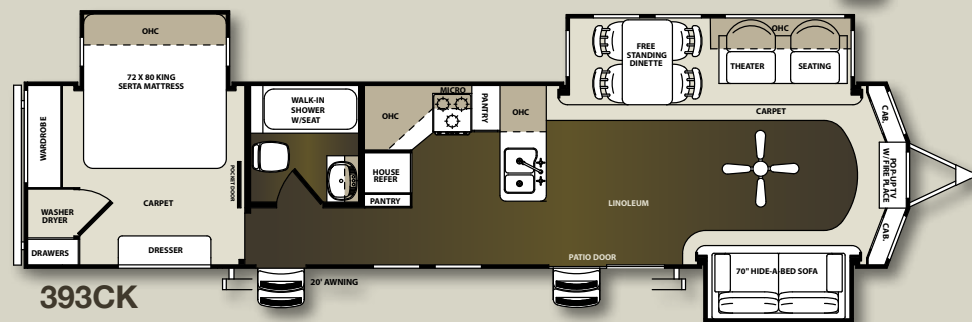
Two Entry Doors
Monster 15' Slideout
Washer/Dryer Prep



Side Aisle Bath
Huge Kitchen Pantry
Pop-up TV

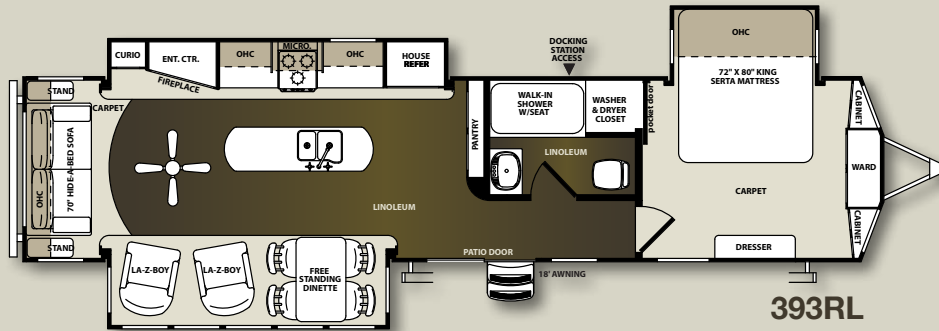


Two Entry Doors
Pop-up TV
Walk-in Shower w/
Seat

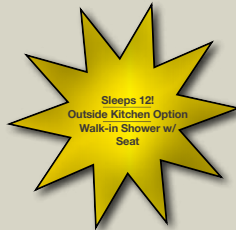




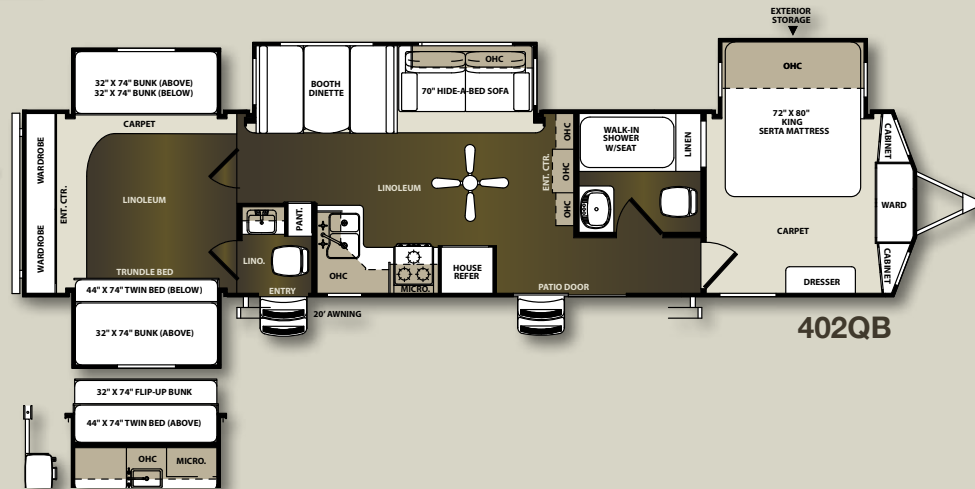
Atrium Room Slide
Huge Kitchen Island
Walk-in Shower w/
Seat



393RL



Sleeps 12!
Outside Kitchen Option
Walk-in Shower w/
Seat



402QB

Model	385FKBH	392FK	392FLKB	393CK	393RL	402QB
Hitch Weight	1,615	1,297	1,060	1,245	1,379	1,180
Ship Weight	10,990	9,603	9,165	10,228	10,667	11,230
GVWR	13,615	13,297	13,060	13,245	13,379	13,180
Cargo	2,625	3,694	3,895	3,017	2,712	1,950
Length	40'3"	40'1"	40'1"	42'1"	41'6"	43'0"
Height	12'7"	12'7"	12'7"	12'7"	12'7"	12'7"
Awning Size	20"	21"	21'	20'	19'	20'
Gray Tank (cap)	64	89	54	64	86	108
Black Tank (cap)	32	54	54	32	54	108
Fresh Tank (cap)	64	64	64	64	64	64

Sandpiper



Sandpiper

DESTINATION TRAILERS



PRE-DELIVERY INSPECTION FACILITY

20,000 square feet of quality assurance. The bare essentials for a premium product. This state-of-the-art facility gives immediate daily feedback to production for quality assurance in every unit built.

24/7 EMERGENCY ROADSIDE ASSISTANCE

For a worry-free ownership experience Forest River includes one year of Coach-Net RV Technical & Roadside Assistance with each RV purchase. Whether new to the RV lifestyle or an experienced RV enthusiast, Forest River owners have 24/7 access to technical, operational and emergency road service coverage throughout the US & Canada. Coach-Net's fast, dependable service is just a phone call away.

Coach-Net®

RV Technical & Roadside Assistance



Forest River, Inc. encourages our customers to purchase their Forest River products from a local dealership whenever possible for the following reasons:

- 1) Forest River, Inc. dealers are independently owned and operated businesses so priority service and scheduling is at their discretion and is often provided to customers that purchased their unit at that dealership.
- 2) Purchasing locally allows customers to establish meaningful relationships with a dealer, enhancing the RV experience through assistance with product questions, user tips or RV regulations for your state or country, and much more!
- 3) Canadian customers must meet requirements to bring an RV purchased out of the country to their home. These requirements may involve additional inspections and certifications, taxes and fees. Your local Canadian Dealer is a professional at meeting these requirements.
- 4) Scheduling timely warranty repairs and adjustments through a local dealership provides far greater flexibility and convenience to you, the customer!

It is the goal of Forest River, Inc. that all of our RV owners fully enjoy the RV experience and that customer satisfaction meets or exceeds their expectations!

FREE MEMBERSHIP
to Forest River Owners' Group

www.forestriverfrog.com



Learn More

Scan this barcode using a QR Reader on your smart phone to learn more about Forest River.



A Berkshire Hathaway company.

Forest River, Inc.
2012 Century Dr.
Goshen, IN 46528
(574) 389-4600
www.forestriverinc.com/sandpiper
www.forestriveraccessories.com

YOUR SANDPIPER DEALER