



CHARLESTON





ROAD READY CAPABILITY.

MEET CONTEMPORARY ELEGANCE. Charleston's space-age ergonomically designed cockpit puts everything within arm's reach. A tilt/telescopic "Smart Wheel", power, adjusting automotive style foot pedals, upgraded stereo with GPS and rear view monitor with side view cameras are just some of the convenient features that make the Charleston so easy to drive.





FASHION FORWARD.

DESIGNED TO DELIVER. At Charleston our interior appointments are refined with a sophisticated, luxurious, yet contemporary feel. Our floorplans are designed to flow effortlessly from the cockpit to the living and galley area and on to the master bedroom. The Charleston envelopes you with rich fabrics and woodgrains that work in concert to bring you the feeling of home while you travel. For entertaining all Charleston's are equipped with Sony® and Bose® entertainment electronics. **SONY. BOSE®**

CHARLESTON



430FK | EXOTIC CHERRY-CASHMERE



FORM FOLLOWS FUNCTION.

INNER SPACE. Style or good taste may be hard to define but are instantly recognizable, and the Charleston has them both in abundance. It's in everything from the sleek ergonomic design of the cockpit to the subtle color contrasts of our professionally designed furniture. The Charleston is designed from the ground up to be the most comfortable and space efficient motorhome on the market today, but it makes no compromises when it comes to luxury.

CHARLESTON



430FK | EXOTIC CHERRY-CASHMERE



AN ENTERTAINER'S DELIGHT.

FUNCTIONAL BEAUTY. Our kitchen comes with solid surface countertops and features a fixed island (430FK) and an oversized stainless steel sink creating a practical cooking, clean up area that would make any chef jealous. The kitchen is outfitted with a residential 3 door stainless steel refrigerator, stainless steel dishwasher, True Induction® electric cooktop and a convection/microwave all to accommodate you for entertaining or even the longest trip.



430FK | EXOTIC CHERRY-CASHMERE
Charleston proudly features **SONY** and **BOSE** components.



REST AND REFRESH.

AN OASIS OF LUXURY. Charleston isn't just about beauty it's also about functionality. The bedroom of the Charleston provides you with a comfortable place to rest after a long day of traveling, this oasis features a king size bed, abundant storage areas, 32" Sony® LED/HD TV and a slide out vanity. The bathroom (right) features a modern shower with a built in seat and contoured glass door, solid surface countertops and mirrored medicine cabinets. Also shown is the convenient hidden washer/dryer feature. **SONY**





EQUALIZER Four (4) point
SYSTEMS fully automatic
hydraulic leveling
system

THE BEAST WITHIN THE BEAUTY

It is both quality of construction materials and innovative engineering techniques that have set the Charleston apart from the competition. Charleston's extraordinary amount of strong, tubular steel is integrated with the chassis to form the basis of our uni-body, "steel cage" construction. With this ultra-strength steel skeleton as a foundation, Charleston's engineers have utilized superior vacuum-bond lamination processes that make our floor, sidewall and roof systems the strongest, most durable in the industry. By taking the time to integrate each structural component with both the chassis and each other, we are drastically improving the Charllestons' ability to take the wear and tear of road travel. This means that each Charleston is built to stand the test of time – inside and out!

VACUUM-BOND LAMINATED ROOF SYSTEM

1. One-piece fiberglass crowned roof (seamless)
2. Structurally engineered block foam insulation
3. Tubular aluminum framing with block foam insulation
4. Foam padding with Luan backing
5. Vinyl interior headliner for easy maintenance

VACUUM-BOND LAMINATED FLOOR SYSTEM

6. Sturdy structural wood flooring
7. 2.5" thick block foam insulation
8. 2.5" tubular steel floor framing
9. Luan plywood
10. Darco underbelly

LAMINATED STORAGE COMPARTMENT FLOOR

11. Darco under-flooring
12. Sturdy structurewood decking
13. Cargo liner
14. Tubular steel framing

VACUUM-BOND LAMINATED SIDEWALLS

15. Gelcoat fiberglass exterior with Luan backing
16. Thick block foam insulation
17. Tubular aluminum framing
18. Decorative interior panels

INTERIOR AND EXTERIOR CONSTRUCTION STANDARDS

19. Residential carpeting (Bedroom)
20. Thick foam padding (Bedroom)
21. Bus-style, side-to-side opening storage compartment doors
22. Sleek automotive styling with automotive head lamps
23. 10K diesel generator on automated slide-tray
24. Automotive environmental controls
25. One piece bonded panoramic windshield
26. Mirrors with integrated side vision cameras
27. Hehr frameless dual pane windows



Peace of mind.

Forest River has yet another exclusive feature to offer: One year of free roadside assistance will be given to every New Charleston customer. This is just one more way to say "Thank you" and to ensure an enjoyable traveling experience.

CHARLESTON STANDARDS AND OPTIONS

Chassis-Freightliner XC Raised Rail Chassis:

Standard Engine-

- Lowered Cummins ISL turbo diesel 8.9 liter 450 HP @ 2100 RPM, 1250 ft. lbs. of torque @1,400 RPM
- 24/7/365 Freightliner factory direct support

Brakes

- Full air w/auto slack adjuster
- ABS
- Front: 17" air disc brakes with ABS
- Rear: 16.5 X 7" drum with ABS, Tag: 15 X 7" drum with ABS
- Two-Stage compression engine brake

Transmission

- Allison 3000MH 6 Speed automatic with electric push button shift
- Transynd transmission fluid

Suspension

- Front: Neway® AS air suspension
- Rear: Neway® AD air suspension
- Tag: Neway® Non-lifting CA-110 with air suspension and air dump
- Sachs custom tuned shock absorbers (a Rolls Royce company)
- Heavy duty stabilizer bar
- 55 degree wheel cut
- "I" beam suspension with bell crank
- Air suspension deflation system

Tires

- Michelin® XZA3T P275/80R/22.5

Wheels

- (6) Polished aluminum
- (2) Steel on inside rear axle
- 22.5 x 8.25

Cooling System

- 1335 C.I., Cross flow, rear mounted radiator
- Transmission oil cooler
- Electronic belt driven fan clutch
- 5 year/100,000 mile coolant (some maintenance required)

Steering Wheel

- Leather wrapped VIP smart wheel
- Washer/wiper with intermittent function
- Electronic cruise control with high idle
- FCC "Courtesy" flashers
- TRW tilt/telescopic steering column

Other Chassis Standards

- 100 gallon, dual fill fuel tank
- Power suspended and adjustable pedals
- 1000W in block engine heater
- LCD engine message center
- Day time running lights
- 7-Pin tow power connector
- 18.7 CFM air compressor
- R134A A/C compressor w/condenser
- Farr® Eco-air cleaner
- Air filter restriction indicator
- Fuel/water separator
- Bendix® AD-9 heated air dryer
- Automatic, heated moisture ejectors
- Power steering
- Leece-Neville 160 amp alternator
- (2) 1900 CCA @ 0° F, (-18° C) maintenance free batteries

Structural Standards

- Laser aligned steel sub-frame and basement construction
- Ziebart® automotive & foam seal undercoating
- Vacuum bonded floor
- Tubular steel frame
- Structure wood flooring
- 2 lb. density, block foam polystyrene insulation throughout
- Vacuum bonded sidewalls
- Tubular aluminum frame
- Gel-coated fiberglass skin
- Hehr® Frameless dual pane, dark tint windows
- Crowned and layered vacuum bonded roof
- Fiberglass roof
- Channeled drains for A/C's
- Tubular steel front bulkhead
- One piece fiberglass front and rear caps

Exterior Standards

- One-piece panoramic windshield
- Automatic generator start
- Sikkens® automotive full body 4 color exterior paint
- 4X Clearcoat for optimal gloss and protection
- Side-hinged exterior compartment doors with full pass through storage
- **EQUALIZER** (4) pt. fully automatic hydraulic leveling system
- 2000 watt pure sine wave inverter/converter
- (4) deep cycle six volt house batteries on slide tray
- (2) Master electric shut off switches
- 50 Amp 120V distribution panel with energy management system
- Automotive style fuse panel
- Individual zoned manifold system with individual shut-off valves
- Variable speed constant pressure water pump
- Full coach water filtration system
- Thermostatically controlled Fantastic® roof vent with rain sensor (Kitchen)
- (1) 3 Speed remote powered lavatory roof vent
- 15,000 BTU low profile front roof A/C with heat pump and ceiling ducts with drain
- 15,000 BTU low profile rear roof A/C with heat pump and ceiling ducts with drain
- 13,500 BTU low profile center roof A/C
- (1) 30,000 & (1) 20,000 BTU furnace
- Girard® tankless continuous flow hot water heater
- 24.5 gallon propane tank
- Black water tank flush system
- Power entrance step
- Patio light
- Lighted entry assist handle with keyless entry
- Front entrance door with heavy duty screen door and deadbolt
- Power front door awning
- Power patio awning
- Covered slide-out room awnings
- Full length drip and awning rail
- 15,000 lb. receiver hitch
- One Key for compartments and doors

- Exterior entertainment center in side-wall with 40" **SONY** LED/HD TV and radio
- Air and "city mode" horns
- Digital stationary TV antenna with signal booster
- Shower skylight
- Docking lights
- Heated pads for all water and holding tanks
- Auxiliary LP hook up-passenger side Auxiliary air chuck-front firewall
- Diamond Shield Protective paint mask
- Full length mud flap with chrome trim
- (2) Piece rear ladder
- Chrome bus style exterior mirrors with integrated side view cameras
- Automatic digital satellite
- Oversized slide-out storage tray
- 360 degree siphon vents
- Basement freezer
- Power cord reel
- Dual fuel fills (LH and RH side)

Driver/Passenger Area Standards

- Wrap around cockpit with (9) gauge instrument cluster
- Extra wide Flexsteel® "soft touch" pilot and co-pilot seating with adjustable arm rests, 360 degree swivel and recline
- 6-Way power pedestal under pilot and co-pilot seats
- 3-point integrated seat belts
- Power actuated step well cover
- Lighted step well
- Rear vision camera with audio and color monitor
- AM/FM/CD player with GPS/NAV and iPod™ auxiliary input
- Sirius® satellite radio capable (hard ware and subscription needed)
- High Def (Cat 6) distribution control box for entertainment electronics
- (2) Defroster fans with high and low settings
- Dash mounted remote generator start switch
- Bedroom auxiliary start switch
- Pilot/co-pilot cup holders
- Automotive dash AC/heater
- Electronic battery disconnect switch

- 40" **SONY** LED/HD TV in cockpit overhead
- Channeled power privacy/sunscreen shade
- MCD® driver and passenger roller style shades
- Solid wood co-pilot console with 110 receptacle and pull-out laptop desk
- Lighted entry assist handle at step well

Living/Dining/Galley Standards

- Three (3) interior décor choices
- Solid wood cabinetry throughout
- 84" ceiling height
- 50" **SONY** color LED/HD TV (430FK)
- **SONY** Sound bar with sub-woofer
- Free standing dinette with buffet
- "Soft Touch" Leather driver side sofa bed (per floorplan)
- "Soft Touch" Leather love seat sofa (per floorplan)
- "Soft Touch" Leather passenger side sofa (per floorplan)
- Brushed nickel cabinet hardware with hidden hinges
- Polished high gloss porcelain tile forward of bedroom
- Dimmer controlled LED lighting in the living room and bedroom
- Soft touch padded ceiling
- Roller style privacy/sunscreen shades
- Solid Surface solid surface countertops throughout
- Stainless steel residential dual basin sink with solid surface covers
- Tiled backsplash
- Single lever faucet with removable head
- Ducted integrated quiet A/C
- Hide-a-leaf dinette (430FK/430RB)
- Residential size stainless steel convection/microwave oven
- Residential stainless steel refrigerator with water and ice dispenser in door
- True Induction electric cooktop
- Automatic generator start
- Full extension metal drawer guides with ball bearings throughout (soft close in this kitchen)
- Central vacuum system
- Energy management system w/ inverter assist

Living/Dining/Galley Options

- Exotic Cherry or Brookside Cognac wood options
- Booth dinette (430BH)
- **BOSE**® sound bar
- Stainless steel dishwasher

Bath Area Standards

- Solid surface sinks and countertops
- Double lever lavatory faucets
- One piece molded fiberglass shower with seat and contoured glass door
- Mirrored medicine cabinets
- Porcelain hand flush toilet
- Towel bars

Bedroom Area Standards

- 72"x 80" island king bed with bedspread
- Ducted integrated quiet A/C with ceiling fixture
- Bedside wardrobe
- Stackable washer/dryer
- Dual control Select Comfort™ mattress with cordless remote
- Dresser drawers and wardrobe
- LED lighting with dimmer
- Individual reading lights
- Carpet with padding (N/A 430RB)
- Night stands
- Wall safe
- Egress window
- Cedar lined closet
- 32" **SONY** color LED/HD TV
- 36" ceiling fan
- Remote generator start switch

Safety Standards

- 110 GFI protected circuits (galley, bath and basement)
- Surface mounted fire extinguisher
- (2) exit windows (bedroom and living room)
- Carbon monoxide detector
- LP gas detector with auto shutoff
- Smoke alarm



A. View it outside. The exterior entertainment center in the sidewall is the perfect way to tailgate or simply watch the big game at your favorite destination. The exterior entertainment features a **SONY** 40" LCD/HD TV and radio.



B. Convenient access. The easy to use electric generator slide tray allows for easy and convenient access to the Charleston's 10KW power generator.



C. Secure it. The keyless entry and lighted entry assist handle provide convenience, comfort and safety when entering your Charleston.



D. Easy to understand. Charleston's automotive style electrical station.



E. Cavernous. Charleston's side opening exterior storage doors allow for greater accessibility and easy access to insulated, steel-cage protected cargo areas. Our above-floor slide-out system allows for increased storage space below.



F. Simply innovative. The Charleston's zoned, central water distribution system allows uninterrupted showers and eliminates numerous elbow connections



G. Convenient protection. Charleston's convenient wall safe is the perfect place to store your valuables during your journey.



CHARLESTON



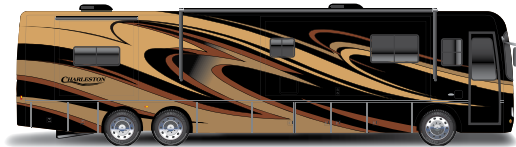
430FK shown in Caramel Ice

PREMIUM PAINT DESIGNS

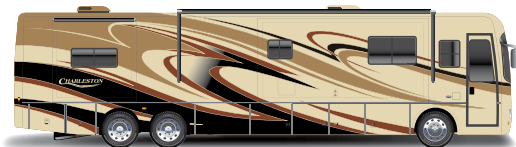
Choose from one of five exciting exterior paint designs. Every artistic embellishment is painstakingly thought out, delivering a design that represents the Charleston's true personality.



Midnight Flame



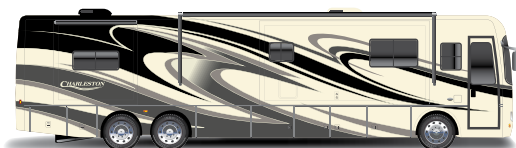
Metal Fusion



Caramel Ice



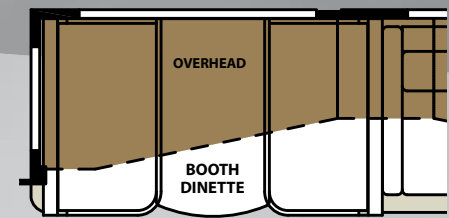
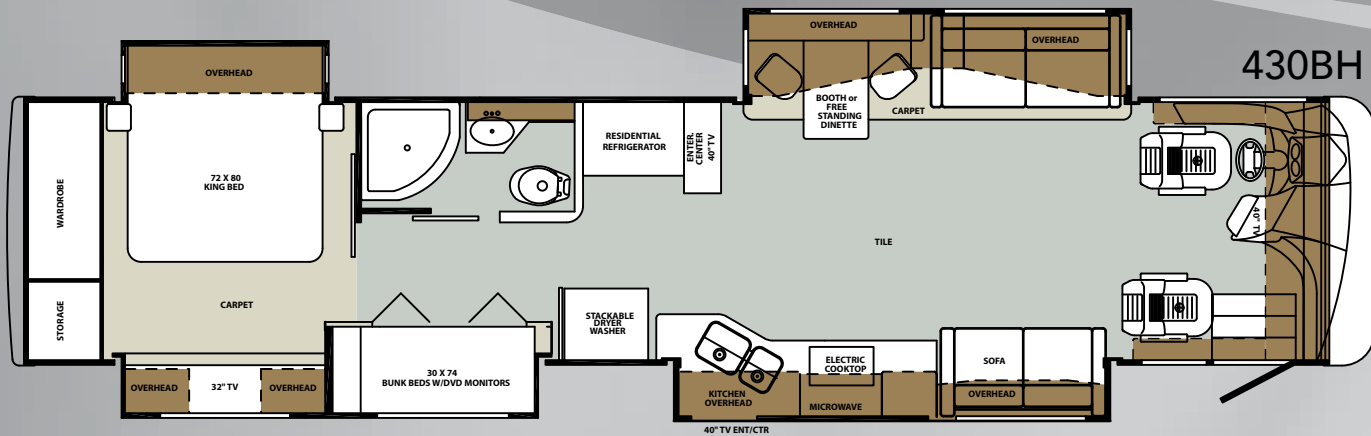
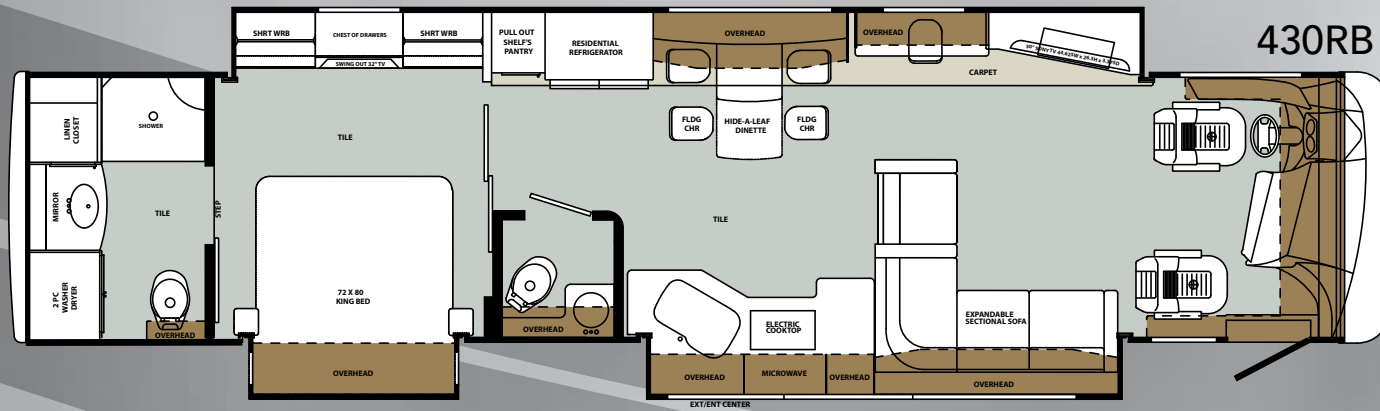
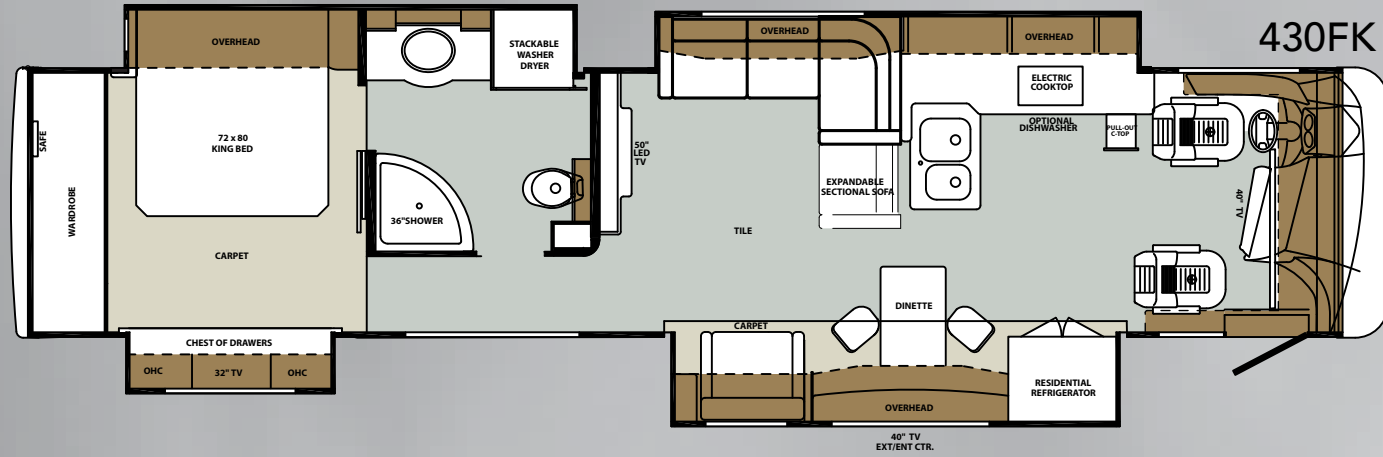
Cinnamon Glaze



Driftwood



CHARLESTON FLOORPLAN OPTIONS



BOOTH OPTION FOR 430BH

INTERIOR DECOR OPTIONS

ENGINE	CUMMINS ISB TURBO DIESEL 450HP
TORQUE (FT. LB.)	1250
TRANSMISSION	ALLISON 3000MH
HITCH RATING (LBS.)	15,000
WHEELS	Polished Aluminum
FRONT GAWR (LBS.)	14,320
REAR GAWR/TAG GAWR (LBS.)	20,000/10,000
GVWR (LBS.)	44,320
GCWR (LBS.)	59,320
FUEL TANK (GAL)	100
DEF TANK (GAL)	13
TIRES	Michelin XZA3T 275/80R/22.5

MODEL	430FK	430RB	430BH
*APPROX. OVERALL LENGTH	42' 11"	42' 11"	42' 11"
OVERALL WIDTH	100"	100"	100"
**APPROX. HEIGHT	12' 9"	12' 9"	12' 9"
INTERIOR WIDTH	95.5"	95.5"	95.5"
INTERIOR HEIGHT	84"	84"	84"
GREY TANK (GAL)	60	60	60
BLACK TANK (GAL)	44	44	44
FRESH WATER TANK (GAL)	86	86	86
LP (GAL)	24.5	24.5	24.5
FURNACE OUTPUT (50K BTU TOTAL OUTPUT)	1-30,000 1-20,000	1-30,000 1-20,000	1-30,000 1-20,000
CONTINUOUS HOT WATER	Tankless	Tankless	Tankless
APPROX. EXT BASEMENT STORAGE (CU. FT.)	185.75	185.75	185.75
WHEELBASE	266"	266"	266"

*Approximate overall length shown w/o rear ladder. Add 6" with rear ladder.

**Approximate overall height shown w/o satellite. Add 2" with satellite.



CASHMERE



TWILIGHT GLIMMER



SADDLE



PRE-DELIVERY INSPECTION FACILITY

20,000 square feet of quality assurance. The bare essentials for a premium product. This state-of-the-art facility gives immediate daily feedback to production for quality assurance in every unit built.



Forest River, Inc. encourages our customers to purchase their Forest River products from a local dealership whenever possible for the following reasons:

- 1) Forest River, Inc. dealers are independently owned and operated businesses so priority service and scheduling is at their discretion and is often provided to customers that purchased their unit at that dealership.
- 2) Purchasing locally allows customers to establish meaningful relationships with a dealer, enhancing the RV experience through assistance with product questions, user tips or RV regulations for your state or country, and much more!
- 3) Canadian customers must meet requirements to bring an RV purchased out of the country to their home. These requirements may involve additional inspections and certifications, taxes and fees. Your local Canadian Dealer is a professional at meeting these requirements.
- 4) Scheduling timely warranty repairs and adjustments through a local dealership provides far greater flexibility and convenience to you, the customer!

It is the goal of Forest River, Inc. that all of our RV owners fully enjoy the RV experience and that customer satisfaction meets or exceeds their expectations!



Your Charleston Dealer:



Learn More

Scan this barcode using a QR Reader on your smart phone to learn more about Forest River.



A Berkshire Hathaway company.

Forest River Charleston Division
 1800 W. Hively Ave.
 Elkhart, IN 46517
 (574) 522-3693
www.forestriverinc.com/Charleston
www.forestriveraccessories.com

All specifications contained herein are based on the latest product information at time of printing. Forest River reserves the right to make changes in colors, materials, equipment and specifications at any time without notice and assumes no responsibility for any errors in this brochure. The pictures in this brochure may show props and optional equipment.

©2014 Charleston - a division of Forest River Inc.
 A Berkshire Hathaway company