

# Sunseeker

BY FOREST RIVER

## CLASS C TOP 10 FEATURES



1. 7' Ceiling height
2. Crowned fiberglass roof
3. 2" Thick gel coat sidewall with Azdel
4. Firestone Ride Right suspension
5. Enclosed and heated tanks
6. Water filtration system
7. 7500 Lb. tow rating
8. Serta Memory mattress (Forest River exclusive)
9. Residential ball bearing drawer guides throughout
10. Integrated entry step



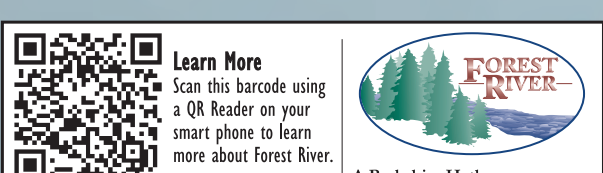
**MBS**

1. Soft touch vinyl ceilings with recessed glass LED lighting
2. Swivel driver and passenger seats
3. Hellwig sway bar
4. Adjustable, electric awning with LED light strip
5. Crowned fiberglass roof
6. Water filtration system
7. LCD touch screen AM/FM/DVD Bluetooth receiver with Sirius antenna
8. Azdel "Superlight" composite substrate
9. Roto-Cast storage compartment
10. Gel coat exterior fiberglass



**GTS**

1. Aerodynamic front
2. Adjustable, electric awning with LED strip
3. Integrated entry step
4. Water filtration system
5. LCD touch screen AM/FM/DVD Bluetooth receiver with Sirius antenna
6. Firestone Ride-Rite Air Helper springs
7. Only quad slide in the Class C industry
8. Crowned fiberglass roof
9. 2" Thick gel coat sidewall with Azdel "Superlight"
10. Heated, enclosed holding tanks

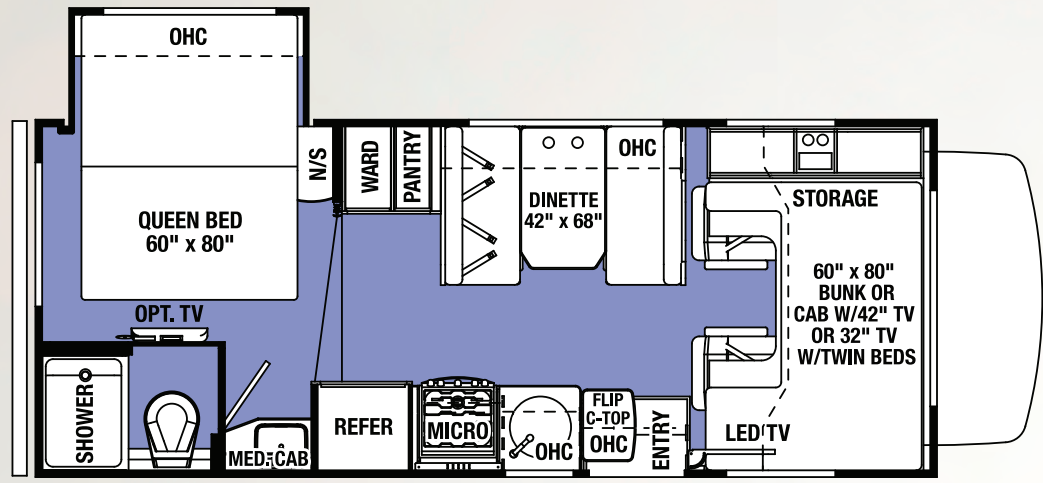


For more information please visit:  
[www.forestriverinc.com/sunseeker](http://www.forestriverinc.com/sunseeker) • 914 CR 1 • Elkhart, IN 46514 • 574.262.2212 • 800.445.2825  
 All information contained in this brochure is believed to be accurate at the time of publication. However, during the model year, it may be necessary to make revisions and Forest River, Inc., reserves the right to make all such changes without notice, including prices, colors, materials, equipment and specifications as well as the addition of new models and the discontinuance of models shown in this brochure. Therefore, please consult with your Forest River dealer and confirm the existence of any materials, design or specifications that are material to your purchase decision. ©2016 Sunseeker - a Division of Forest River, Inc. - a Berkshire Hathaway Company 1/16

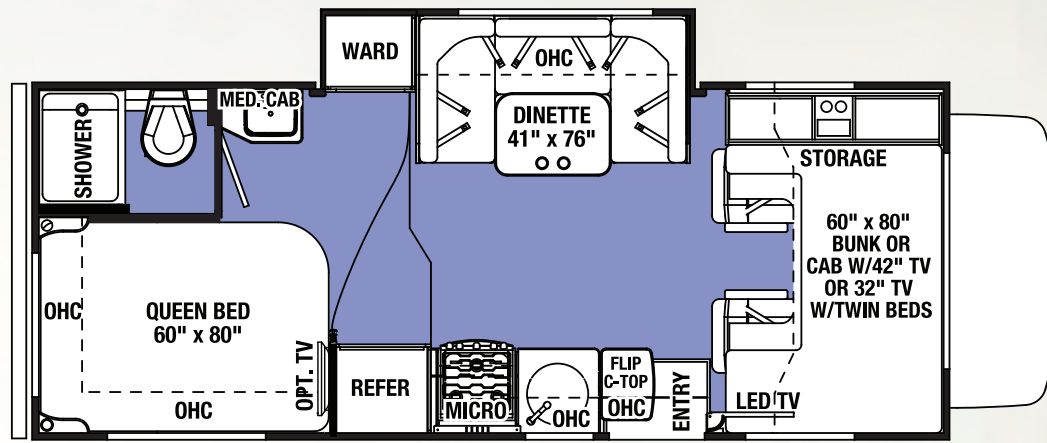
# Sunseeker

BY FOREST RIVER

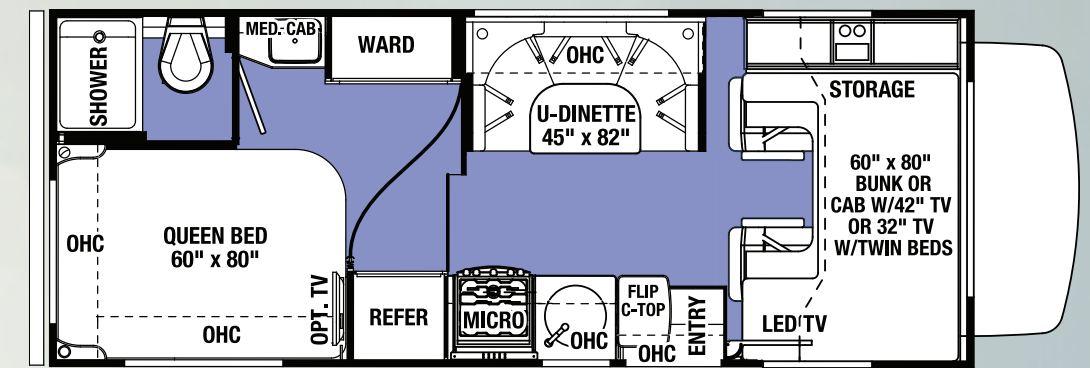
## CLASS C FLOORPLANS



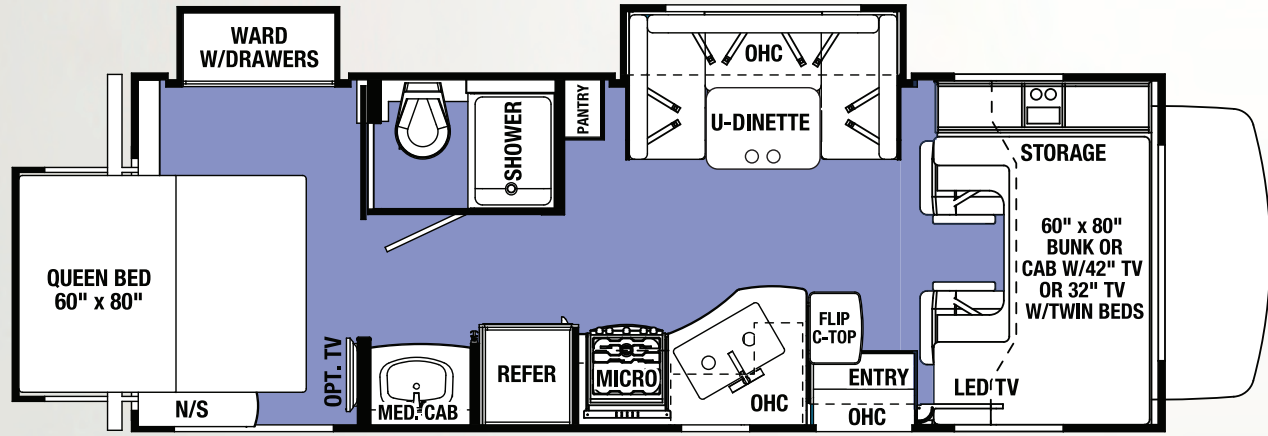
2250S LE



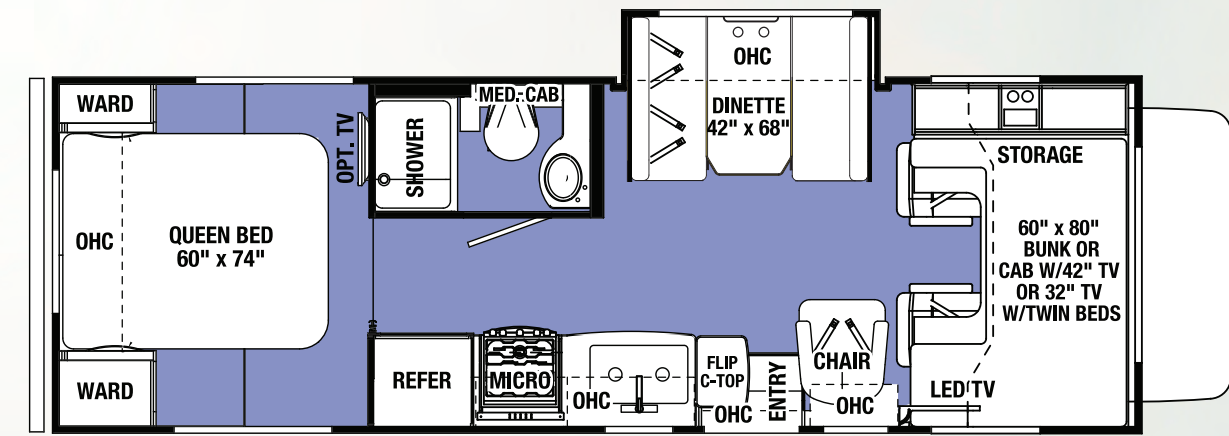
2290 S



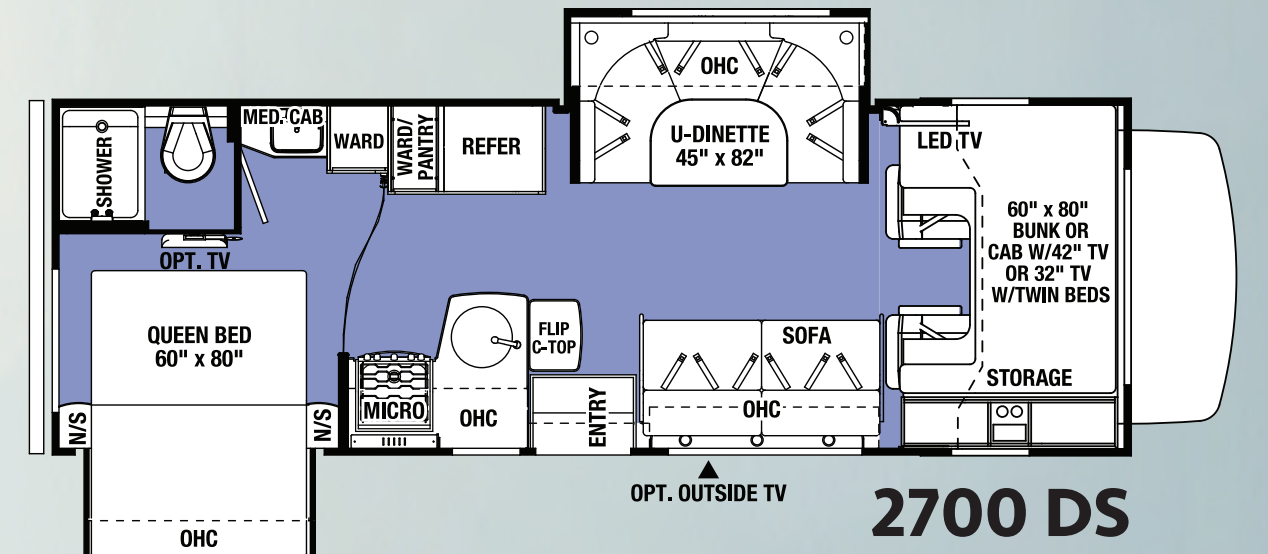
2300



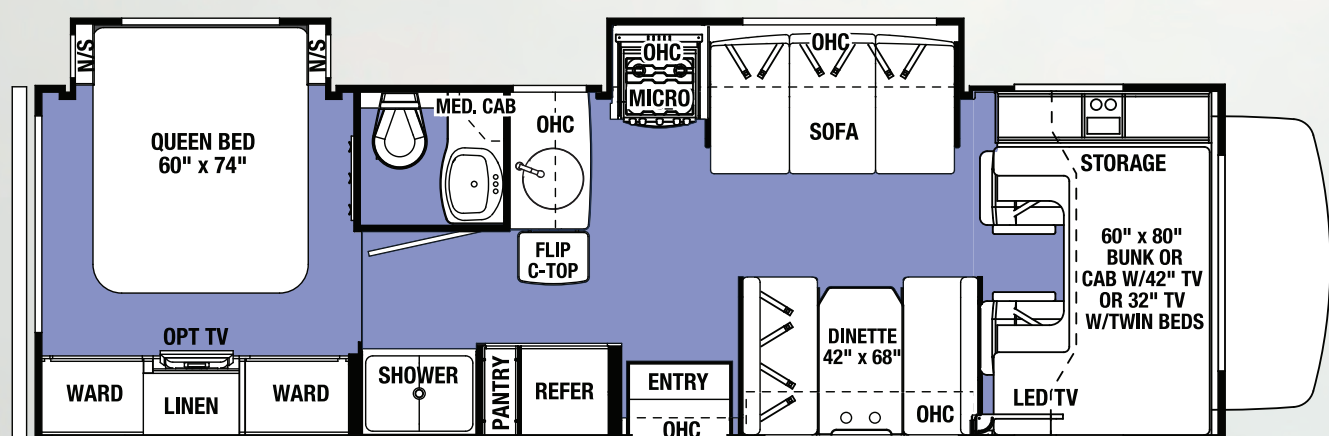
2500 TS



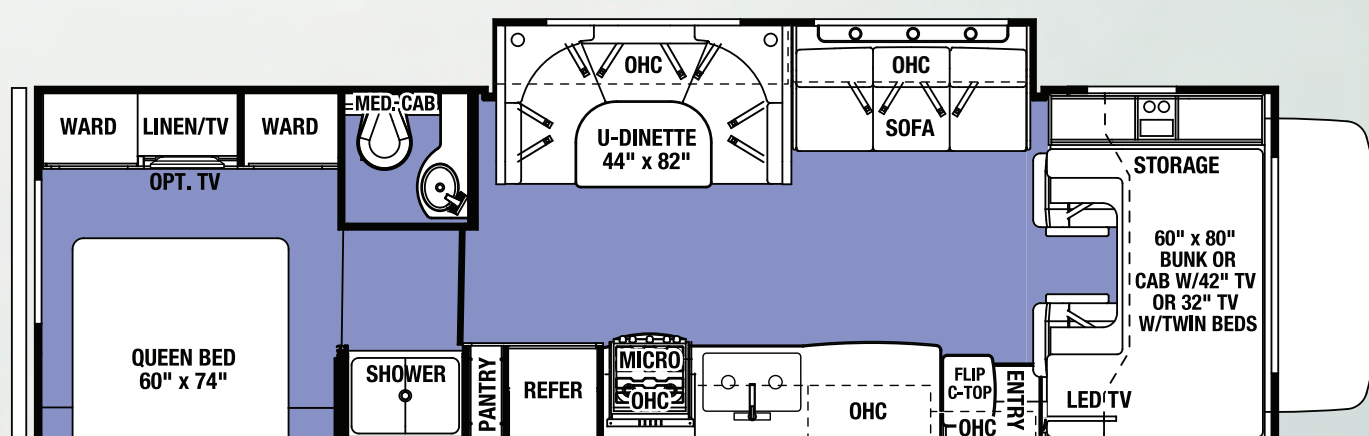
2650 S



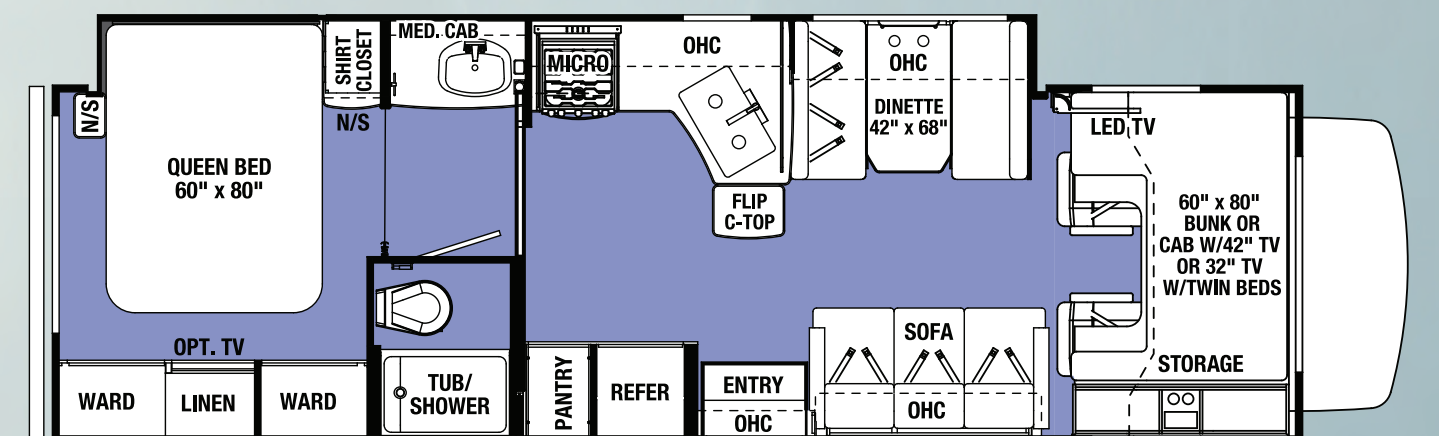
2700 DS



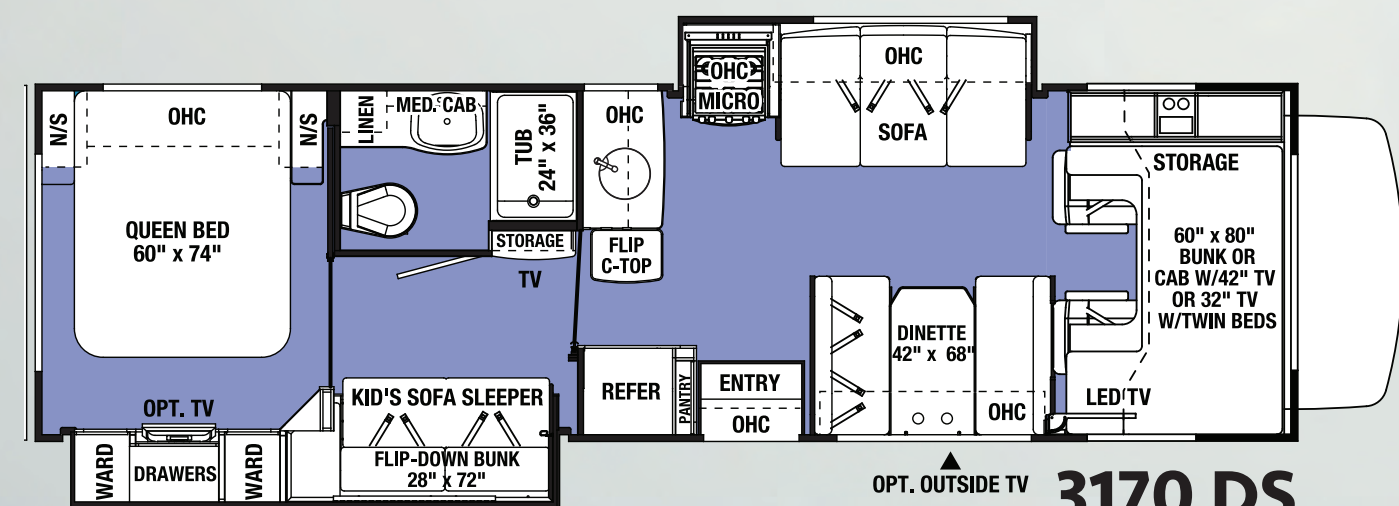
2860 DS



3010 DS

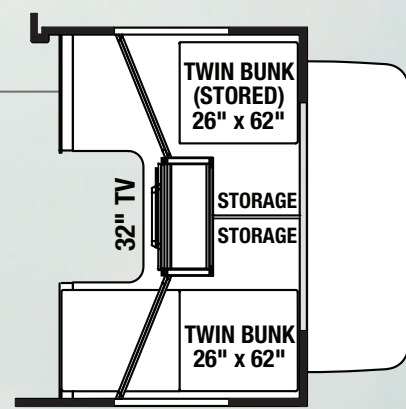


3050 S



3170 DS

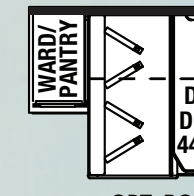
### OPTIONS



OPT. CABOVER TWIN BEDS W/32" TV  
2250, 2290, 2300, 2500, 2650, 2700, 2860, 3010, 3050, 3170



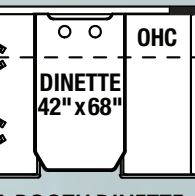
4-DOOR REFER



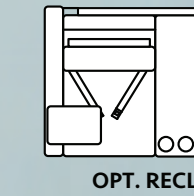
OPT. SIDE-BY-SIDE REFER



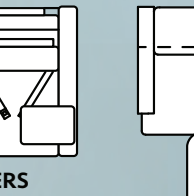
OPT. DREAM DINETTE



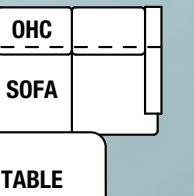
OPT. BOOTH DINETTE



OPT. BOOTH DINETTE



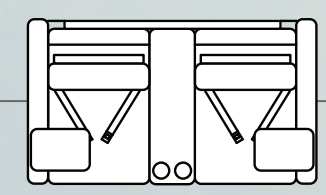
OPT. RECLINERS



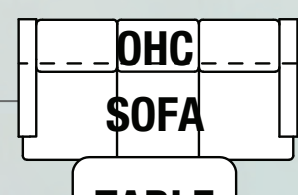
OPT. TABLE



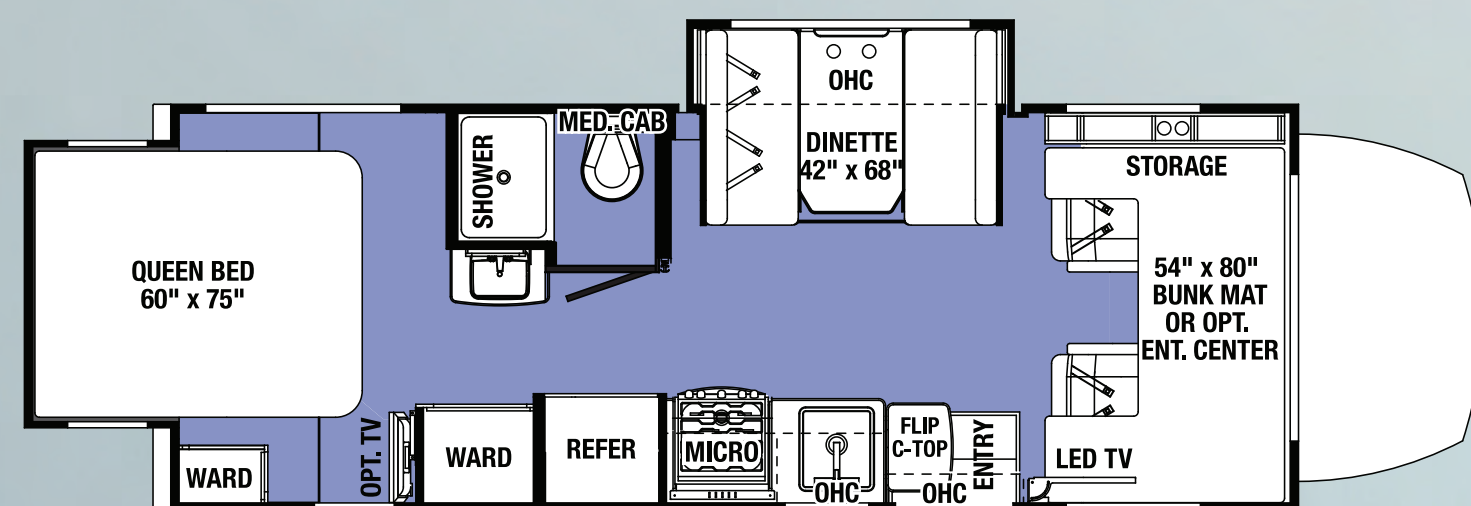
### OPTIONS



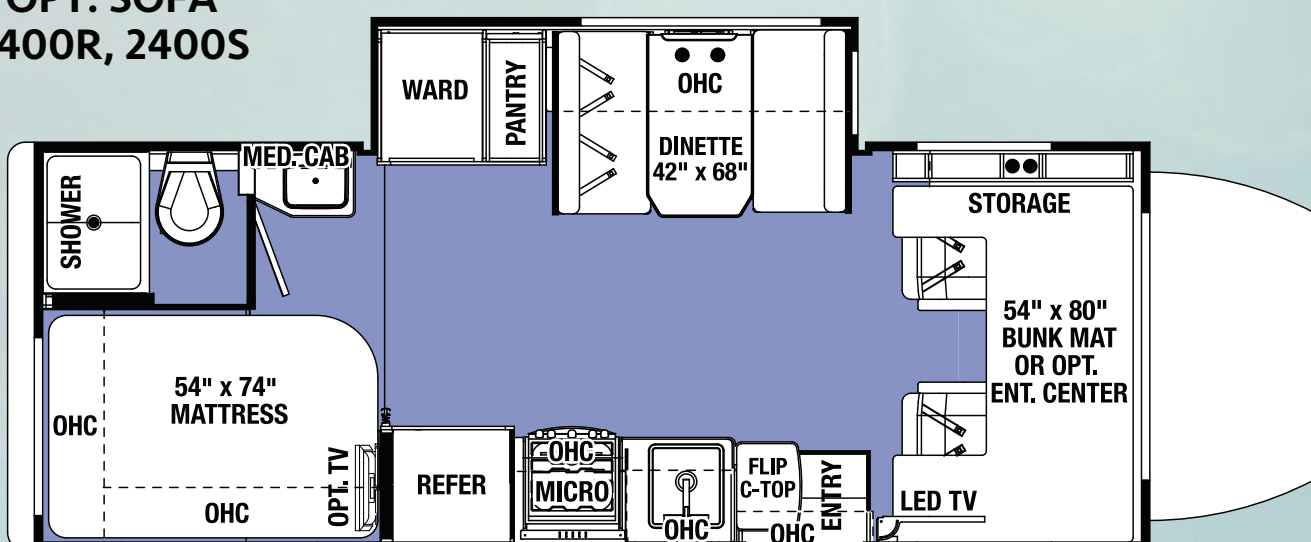
OPT. RECLINERS 2400R



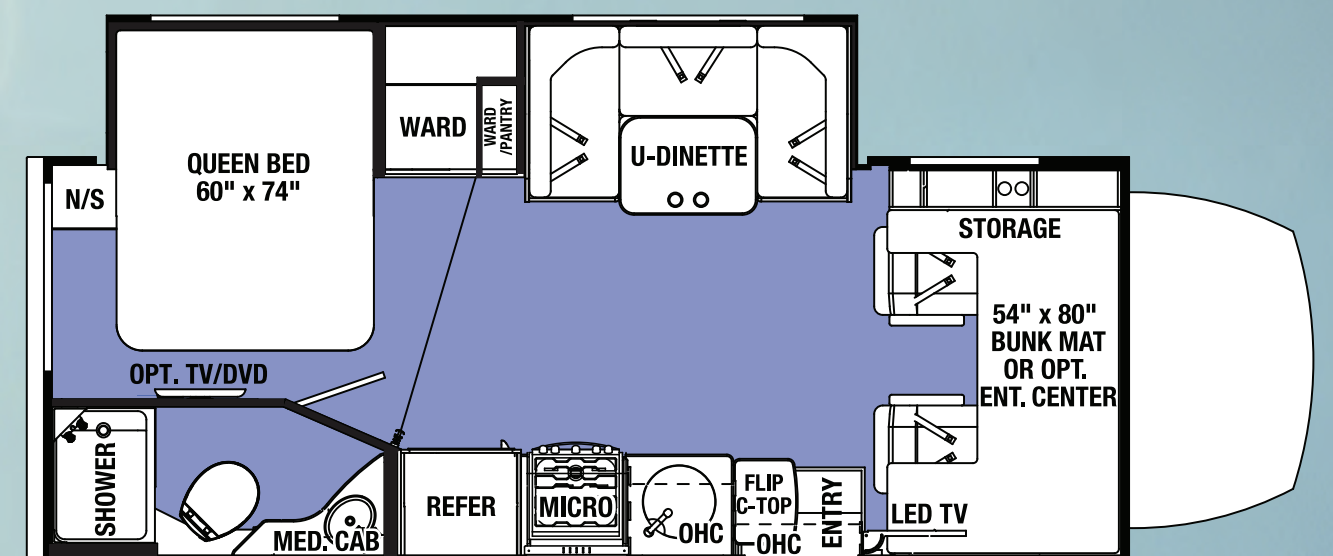
OPT. SOFA 2400R, 2400S



MBS 2400 R



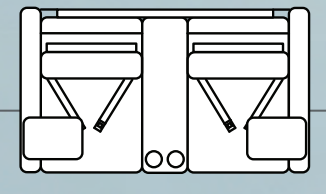
MBS 2400 S



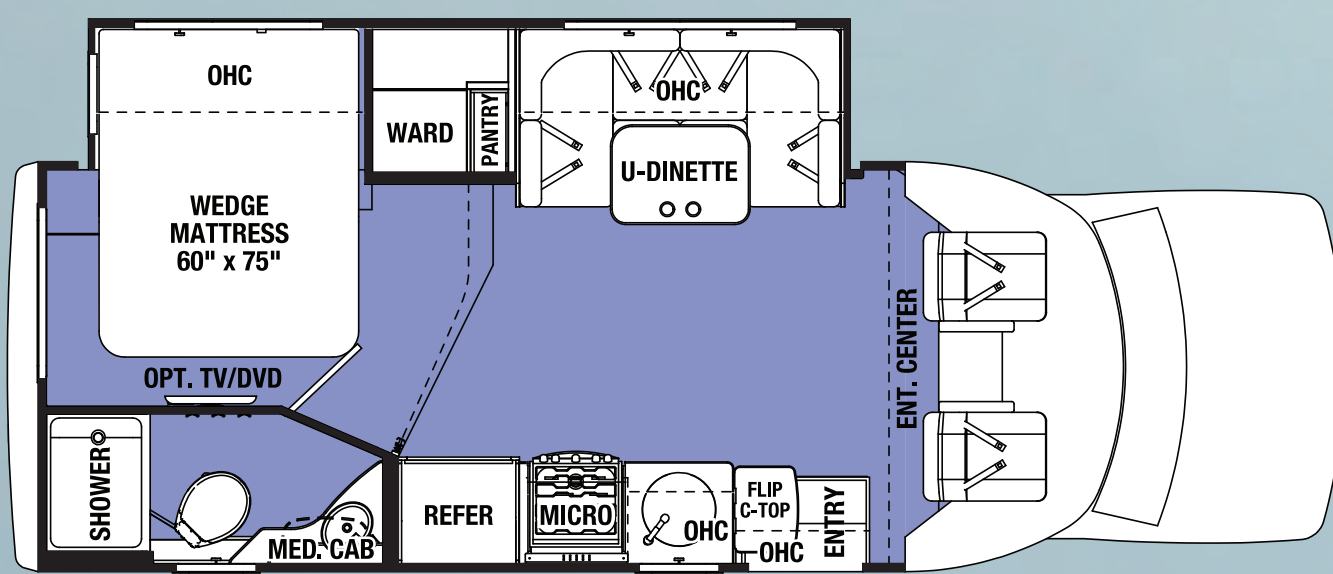
MBS 2400 W



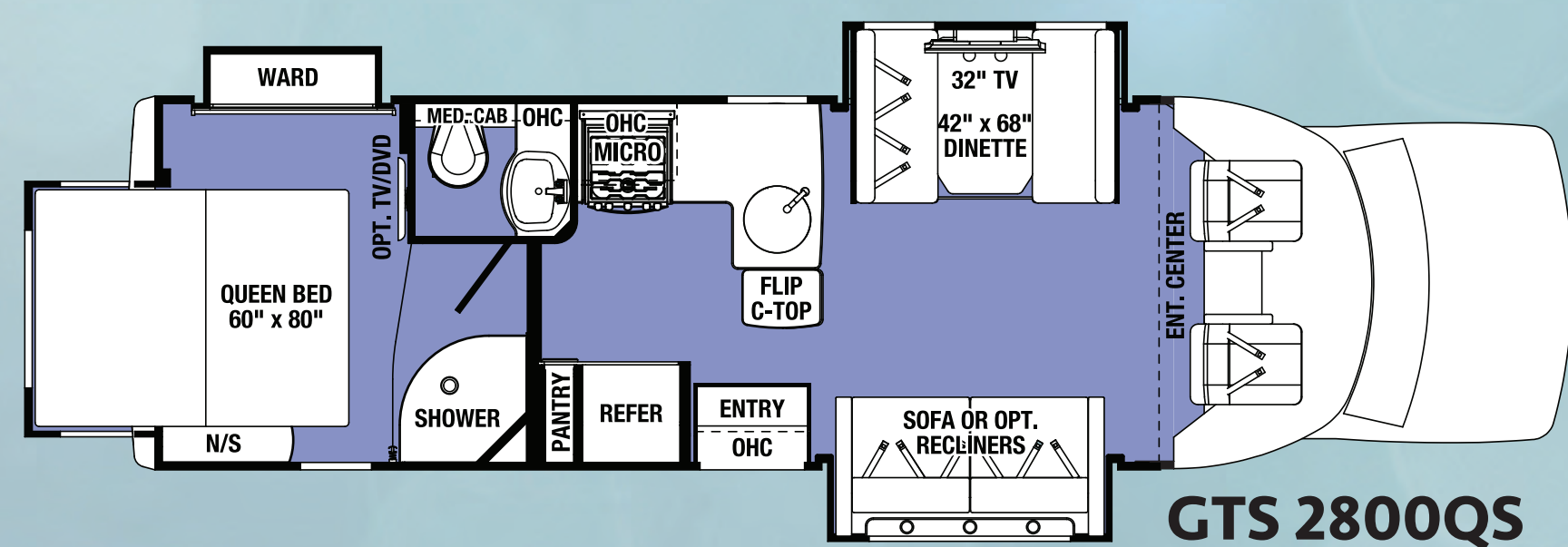
### OPTIONS



OPT. RECLINERS 2800



GTS 2430S



GTS 2800QS



For more information please visit:  
[www.forestriverinc.com/sunseeker](http://www.forestriverinc.com/sunseeker) • 914 CR 1 • Elkhart, IN 46514 • 574.262.2212 • 800.445.2825  
 All information contained in this brochure is believed to be accurate at the time of publication. However, during the model year, it may be necessary to make revisions and Forest River, Inc., reserves the right to make all such changes without notice, including prices, colors, materials, equipment and specifications as well as the addition of new models and the discontinuance of models shown in this brochure. Therefore, please consult with your Forest River dealer and confirm the existence of any materials, design or specifications that are material to your purchase decision. ©2016 Sunseeker - a Division of Forest River, Inc. - a Berkshire Hathaway Company 1/16