

# Flagstaff

MAC, SE, CLASSIC, HIGH WALL & HARD SIDE CAMPERS

WE'RE  YOUR  
**LIGHT WEIGHT**  
SPECIALISTS  
EST. 1974



**Flagstaff**

MAC, SE, CLASSIC,  
HIGH WALL &  
HARD SIDE CAMPERS



FLAGSTAFF

# Mac

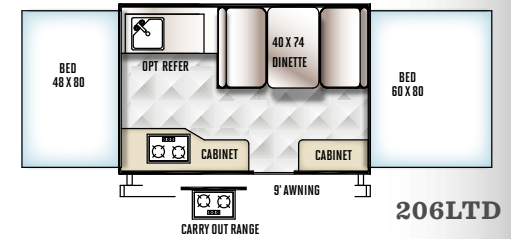
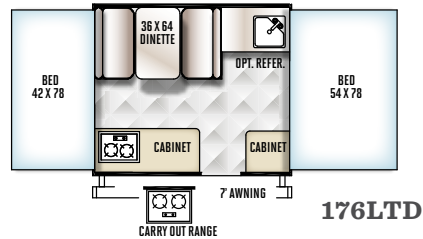
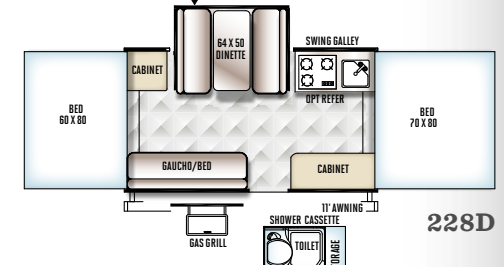
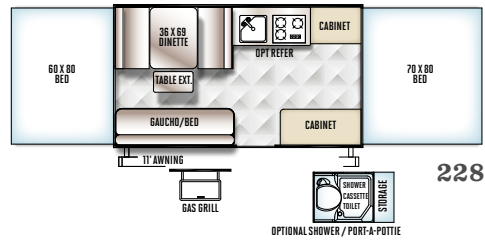
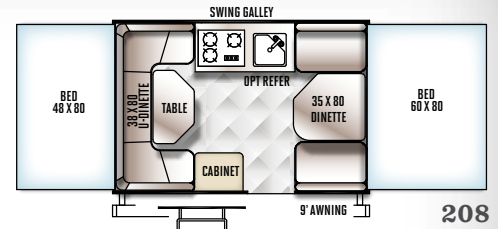
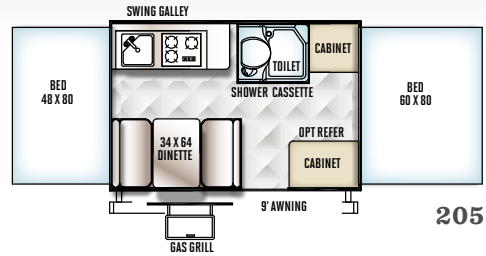
**Yes, you're camping, but that does not mean your comfort stays home.**

Available features like the three-speed ventilation fan to pull in fresh outside ambient air through open windows so you remain comfortable at night and swing level galley to keep kitchen utensils in their place are simple amenities that add tremendously to the comfort of your vacation. It's your vacation. Do it right.





228



MODEL	205	208	228	228D	176LTD	206LTD
Unloaded Vehicle Weight *	1997	1896	2278	2439	1465	1608
Base Dry Hitch Weight	230	255	289	263	162	195
Base Dry Axle Weight	1748	1622	1970	2157	1284	1394
Cargo Capacity	1233	1359	1011	824	857	747
Box Size	10'	10'	12'	12'	8'	10'
Trailer Size (Closed w/ Hitch)	15' 3"	15' 3"	17' 2"	17' 2"	12'	14'
Height (Closed)	66"	66"	66"	66"	64"	64"
Trailer Length (Open)	20' 1"	20' 1"	23' 10"	23' 10"	17' 1"	20' 1"
Fresh Water Capacity	26	26	26	26	10	10

The Unloaded Vehicle Weight (UVW) listed represents the weight of one trailer with that model's standard equipment including the content of specified Option Packages. \* See back cover for further specification definitions.

FLAGSTAFF

# Sports Enthusiast Package

**Welcome to the Flagstaff Sports Enthusiast package (SE), a camper designed for active couples and families.** Whatever the preference; mountain biking, canoeing, paddle boarding or surfing, the SE camping trailers are designed to allow you to make the most of your outdoor experience.

**Built for 21st century camping.** The SE package has interior features targeted for the modern, active lifestyle including a Digital Media Receiver with Blue Tooth, MP3 player, USB and auxiliary ports, recharging station with (2) additional USB ports, LED interior lighting and more.

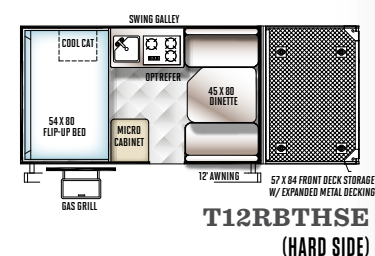
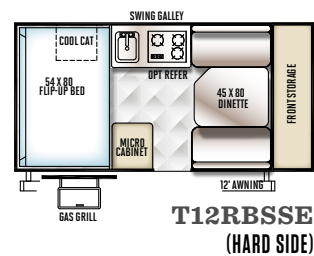
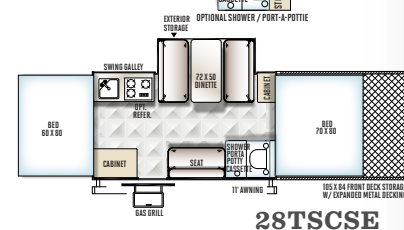
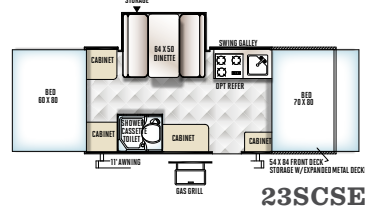
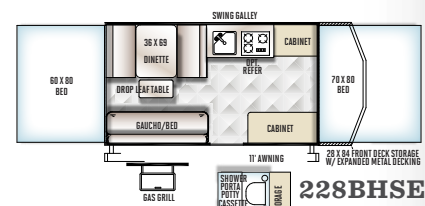
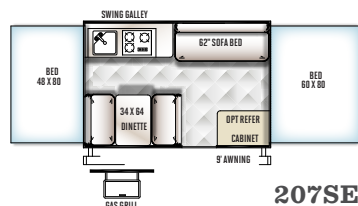
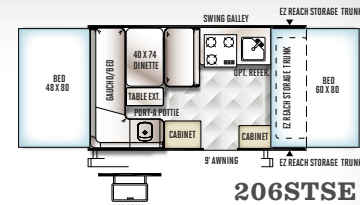
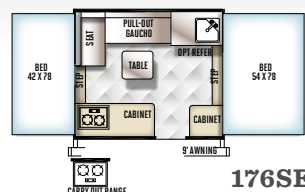
**Cargo carrying versatility.** The Flagstaff SE camper features ProRac Systems, Inc. permanent mount cross bars that provide a load-bearing surface for securing up to 150 lbs. of a wide variety of outdoor sports equipment.

**Unbounded adventure.** Distinctive fender flairs and 15" Mud Rover Radial Tires with Aluminum Wheels that provides for 12" ground clearance to go anywhere.





206STSE



MODEL	176SE	206STSE	207SE	228BHSE	233CSE	28TSCSE	T12RBTHSE	T12RBSSE
Unloaded Vehicle Weight *	1722	2180	2076	2559	2933	3377	2392	2272
Base Dry Hitch Weight	178	254	234	338	294	221	346	290
Base Dry Axle Weight	1525	1907	1823	2202	2620	3118	2008	1944
Cargo Capacity	656	724	808	1279	861	1844	1454	1418
Box Size	8' 4"	10'	10'	12'	12'	12'	12'	12'
Trailer Size (Closed w/ Hitch)	12'	17' 11"	15' 3"	18' 8"	21' 9"	26'	22' 1"	19' 1"
Height (Closed)	71"	71"	71"	74"	74"	74"	65"	65"
Trailer Length (Open)	17' 1"	20' 4"	20' 1"	23' 10"	26' 5"	30' 8"	TBD	TBD
Fresh Water Capacity	20	20	20	26	26	26	26	26

The Unloaded Vehicle Weight (UVW) listed represents the weight of one trailer with that model's standard equipment including the content of specified Option Packages. \* See back cover for further specification definitions.

FLAGSTAFF

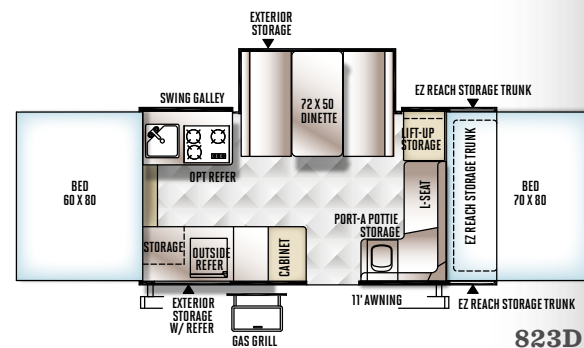
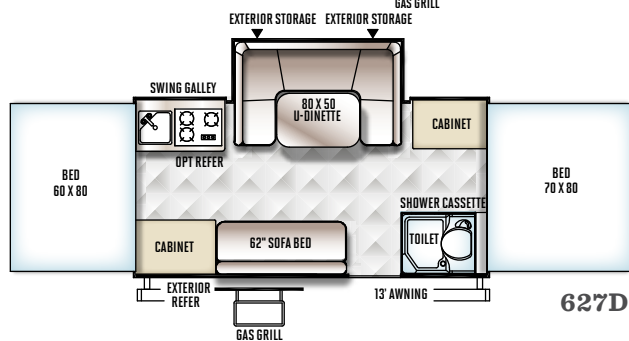
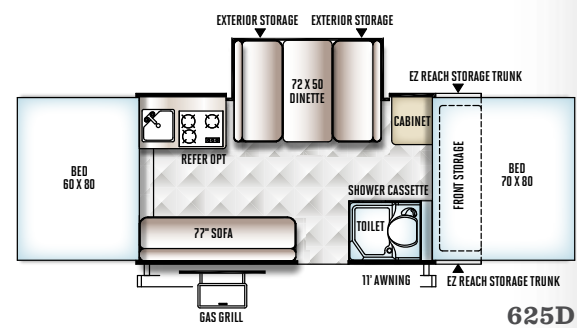
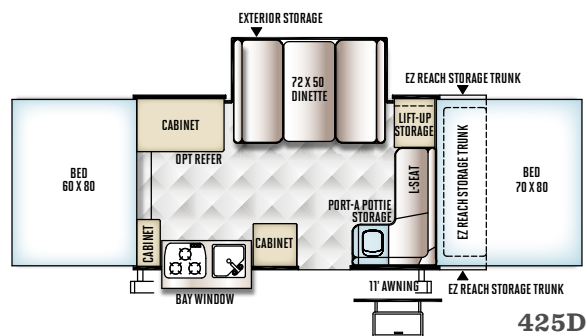
# Classic

**The Flagstaff Classic is the top tent camper on the market today.** The expansive EZ Reach storage trunk for that extra cargo space, a comfortable, heated, inner-spring mattress, for a peaceful night's sleep, large slide out dinette for a more spacious interior and the convenient power lift system for easier setup are some of the basic features that really make your camper a Classic.





625D



MODEL	823D	425D	625D	627D
Unloaded Vehicle Weight *	2795	2698	2785	2831
Base Dry Hitch Weight	292	297	296	370
Base Dry Axle Weight	2484	2382	2470	2442
Cargo Capacity	497	599	511	539
Box Size	12'	12'	12'	14'
Trailer Size (Closed w/ Hitch)	19' 1"	19' 1"	19' 1"	19' 1"
Height (Closed)	69"	69"	69"	69"
Trailer Length (Open)	23' 9"	23' 9"	23' 9"	25' 9"
Fresh Water Capacity	26	26	26	26

The Unloaded Vehicle Weight (UVW) listed represents the weight of one trailer with that model's standard equipment including the content of specified Option Packages.  
 \* See back cover for further specification definitions.

FLAGSTAFF

# High Wall

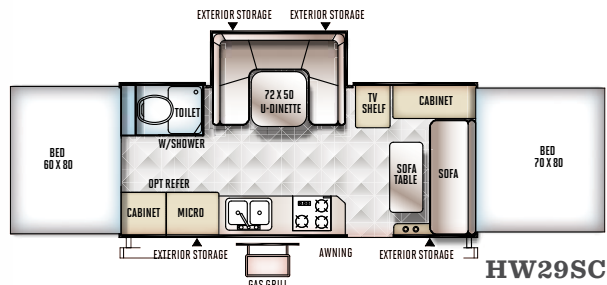
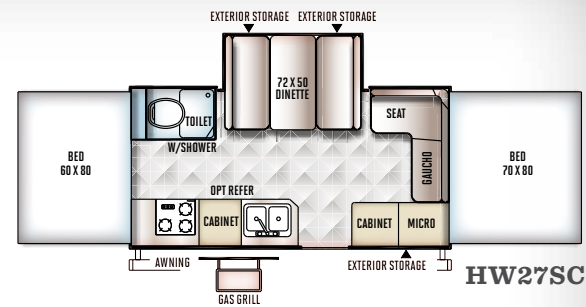
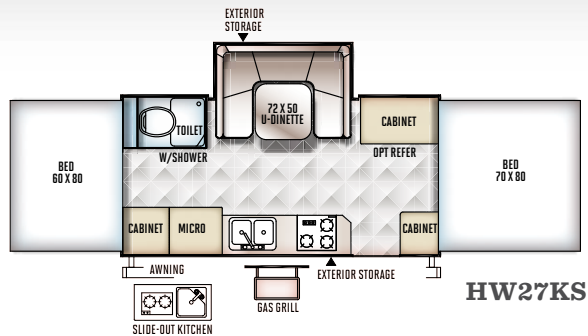
**Kiss the campground bath house goodbye.** Welcome to the Flagstaff High Wall Series. We have designed this series for the camping family who wants the refinement of larger vacationing units in a light-weight camper. Ample counterspace, upgraded appliances, convenient pull-up curtains providing a wide view of the surroundings and tasteful interiors make this camper a gorgeous option to experience.







**HW27KS**



MODEL	HW27SC	HW27KS	HW29 SC
Unloaded Vehicle Weight *	3249	3334	3721
Base Dry Hitch Weight	296	380	371
Base Dry Axle Weight	2915	2916	3312
Cargo Capacity	547	546	1278
Box Size	14'	14'	16'
Trailer Size (Closed w/ Hitch)	19' 4"	19' 4"	21' 4"
Height (Closed)	79"	79"	81"
Trailer Length (Open)	25' 9"	25' 9"	27' 9"
Fresh Water Capacity	26	26	26
Gray Water Capacity	12	12	12
Black Water Capacity	12	12	12

The Unloaded Vehicle Weight (UVW) listed represents the weight of one trailer with that model's standard equipment including the content of specified Option Packages.  
\* See back cover for further specification definitions.



FLAGSTAFF

# Hard Side

**Quite possibly the best of both worlds.**

When you combine the solid exterior of a travel trailer with a Classic tent camper, you get the Flagstaff Hard Side Series, giving your camping experience the best of both. Bringing a smooth, fiberglass vacuum bonded exterior with a quick, easy set up, while retaining the towing and storage advantages of a tent camper, the Hard Side camper is the perfect blend.



Hard Side and Hard Side High Wall Awning & Screen Room option shown on T12RBST.





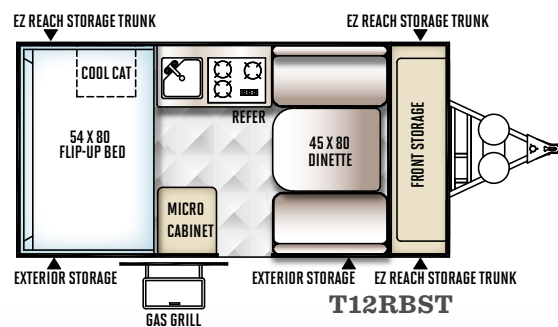
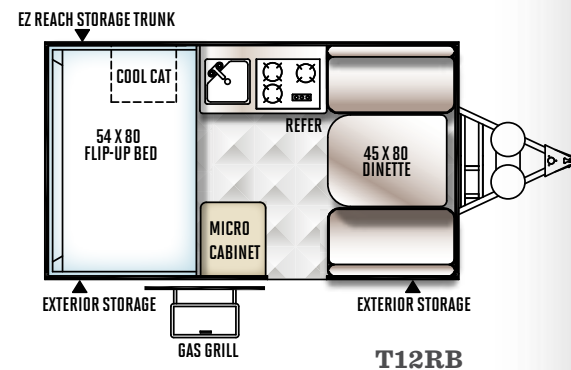
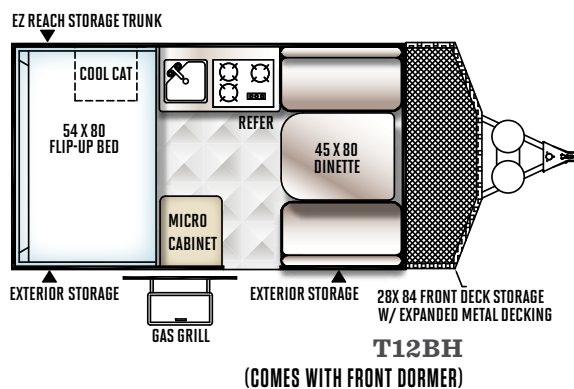
**T12RBST**



**Gas Strut Lift Assist**  
(Std. Hard Side Models w/ Manual Lift Roof Only)



**Molded LP Bottle Covers**  
(Std. All Hard Side Models, High Wall Only)



MODEL	T12RB	T12RBST	T12BH
Unloaded Vehicle Weight *	2014	2120	2267
Base Dry Hitch Weight	222	284	307
Base Dry Axle Weight	1754	1798	1922
Cargo Capacity	1208	1164	1040
Box Size	12'	12'	12'
Trailer Size (Closed w/ Hitch)	17' 1"	18' 11"	19' 2"
Height (Closed)	61"	61"	61"
Fresh Water Capacity	26	26	26

The Unloaded Vehicle Weight (UVW) listed represents the weight of one trailer with that model's standard equipment including the content of specified Option Packages.  
\* See back cover for further specification definitions.

FLAGSTAFF

# Hard Side High Wall

**Ever get more than you expect?** That is what you get with the Flagstaff Hard Side High Wall Series. What appears to be another easy to tow, convenient to store camping trailer transforms into a fully equipped camper with many of the amenities commonly found in today's travel trailers.

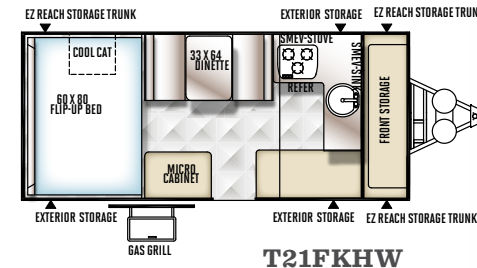
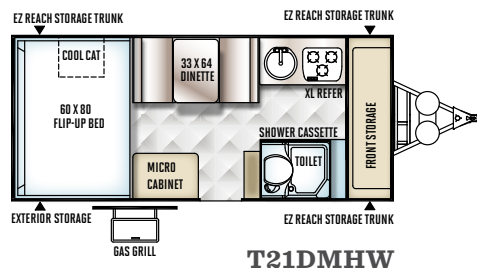
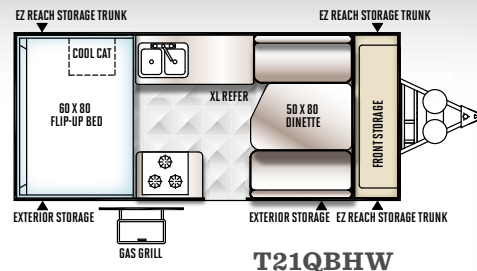
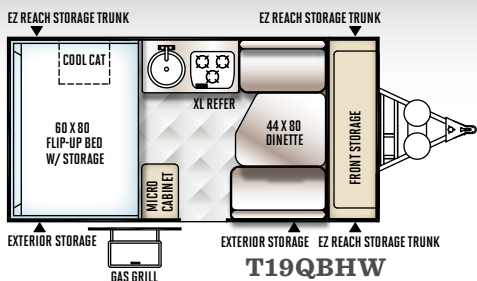




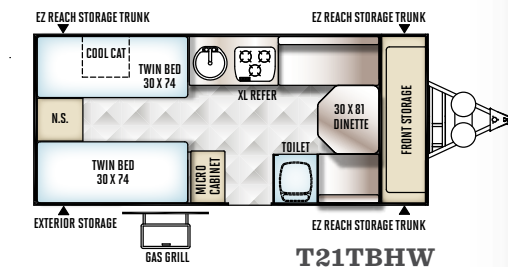
**T21DMHW**



**Power Roof Lift Assist**



**T21DMHW & T21FKHW EXTERIOR VIEW**



MODEL	T19QBHW	T21QBHW	T21TBHW	T21DMHW	T21FKHW
Unloaded Vehicle Weight *	2312	2560	2532	2730	2642
Base Dry Hitch Weight	341	297	312	341	347
Base Dry Axle Weight	1933	2225	2182	2351	2257
Cargo Capacity	1029	737	780	611	705
Box Size	12'	14'	14'	14'	14'
Trailer Size (Closed w/ Hitch)	18' 11"	20' 10"	20' 10"	20' 10"	20' 10"
Height (Closed)	65"	67"	67"	68"	68"
Fresh Water Capacity	26	26	26	26	26

The Unloaded Vehicle Weight (UVW) listed represents the weight of one trailer with that model's standard equipment including the content of specified Option Packages. \* See back cover for further specification definitions.



K

Dometic

B

P

C

A

F

Flagstaff  
CLASSIC

N

O

H

I

G

M

L

D

## FLAGSTAFF

## Construction

- A Three Stage Double Arm Lifter Posts (NA Hard Side)
- B Fiberglass Vacuum Bonded Radius Roof w/ No Center Seam (NA Hard Side)
- C Five-Piece Vinolon Supreme Tenting (NA Hard Side)
- D E-Z Crank Down Stabilizer Jacks w/Sand Pads
- E Full Perimeter Aluminum Bed Frames (NA Hard Side)
- F Plywood Bunk Ends (NA Hard Side)
- G Seven-Way Pigtail Wiring
- H Under Floor 20 Gallon Fresh Water Tank (LTDs 11 Gallon Above Floor)
- I Powder Coated Tubular Steel Frame
- J Powder Coated Rafter Poles and Bed Bows (NA Hard Side)
- K Air Conditioner Reinforcing Laminated Into Roof (NA Hard Side)
- L Nitrogen Filled Steel Belted Radial Tires
- M Easy Lube System (Except LTDs)
- N Smooth Fiberglass Vacuum Bonded Exterior (NA on Freedoms)
- O One-Piece Door (Except LTDs & Hard Side)
- P Under Awning LED Lighting (N/A LTD's & Hard Side.)



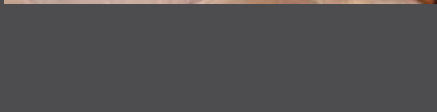
## DEXTER TORFLEX

**(Standard on Classic, High Wall and Hard Side Models)**

- Independent wheel suspension and self-damping action
  - Rubber cushioning eliminates metal-to-metal contact.
  - Forged torsion arm for maximum strength
- Most models are also equipped with E-Z Lube® System and Nev-R-Adjust® Brakes.

FLAGSTAFF

# Popular Features



**A** Toylok Mounted Locking System  
(Std. on T12BH & All SE Models)

**B** Heated Mattress (Std. Opt.)

**C** Swing Down Galley (Except LTDs, Hard Side, High Wall)

**D** Metal Full Extension Drawer Guides (Std.)

**E** Solar Panel Prep (Std. all models) The Zamp 40 watt portable solar panel shown is sold separately.

**F** 3 Speed Ventilation Fan (Except LTDs.)

**G** Water Pump with Filter (Std.)

**H** Outside Grill with Work Table (Std. Mac, Classic ,  
Hard Side, High Wall)

**I** Add-a-Room with Privacy Panels (Opt. all  
Models Except Hard Side)

**J** Power Lift ( Std. Classic , High Wall 23SCSE, 28TSCSE  
and Opt. MAC/LTD)

**K** Crank Down Stabilizer Jack (Std.)

**L** Easy Glide Scissorpole Bed Supports (Except LTDs)

**M** Bike Rack Option (Most Models)





- N Under Awning LED Light**  
(STD All Models Except LTD's and Hard Side)
- O One-Piece Door** (Except LTD's, Hard Side) and **Large Entry Assist Handle** (Except LTD's)
- P Beautiful Hardwall Shower with a residential-style flush toilet complete with 12-gallon black and gray water holding tank and monitor panel.** (Std. High Wall)
- Q Hanging Wardrobe** (Opt. all Models Except Mac, Hard Side & LTD's)
- R Outside Shower** (Incl. w/ Hot Water Pkg: Std: Classic , Hard Side, High Wall and Opt: Mac)
- S AM/FM Stereo with CD Player** (Std. Classic , Hard Side & High Wall, HW29SC Std. w/ AM/FM/CD Stereo with DVD Player)
- T Easy Opening Deluxe Pull-up Curtains.** (Std. Classic and High Wall)
- U Double Entry Step** (Std. 29SCSE, 28TSCSE, All HW Models, and Hard Side T21QBHW, T21TBHW, T21DMHW)
- V Black Water Hose Storage** (Std. HW models)
- W LED Bunk Light** (Std. Classic & High Wall)
- X Molded LP Bottle Covers** (Std. Hard Side, High Wall Only)
- Y EZ Reach Storage Trunk** (Some Models)
- Z ProRac Roof Mounted Cross Bars w/ Opt. Bike and Kayak Carrier attachments.** (All SE Models)

# Standards & Options



MODELS	LTD	M	SE	C	HW	HS
<b>STANDARD &amp; OPTIONAL FEATURES</b>						
Cherry Interior with "Tile-Look" Linoleum	--	--	--	S	S	S
Hickory Interior with "Tile-Look" Linoleum	S	S	--	--	--	--
Driftwood Interior with "Wood-Look" Linoleum	--	--	S	--	--	--
Two-Tone Fabric Seating	S	S	--	S	S	S
"Leather Appearance" Seating	--	--	S	--	--	--
Residential Style Kitchen Faucet	S	S	S	S	--	S
Stainless Steel Look Appliances and Sink	--	--	--	S	S	S
Double Pan Sink with High Rise Faucet (HS: T19SCHW, T21QBHW Only)	--	--	--	--	S	S*
Electric Water Pump	S	S	S	S	S	S
Hot Water Package (Incl. Water Filter, Outside Shower, Six Gallon DSI Hot Water Heater, Demand Water Pump) (Opt. M: 206ST, 207, 208, SE: 206STSE, 207SE) (Std. M: 205, 227, 228, 228D, SE: 228BHSE, 233SCSE, 28TSCSE)	--	S/D*	S/D*	S	S	S
Port-a-Potty (SE: 206STSE, C: 425D HS: T12RB, T12RBS, T12RBBHSE, T12RBTH, T12DDST, T19QBHW, T21QBHW Only)	--	S*	S*	S*	--	S*
Residential Flush Toilet in Cabinet (HS: T21TBHW Only)	--	--	--	--	--	S*
Shower and Cassette Toilet Package Incl. Cabinet w/ Shower, Cassette Toilet and Shower Curtain. (Opt. M: 228, 228D, SE: 228BHSE) (Std. M: 205, 246D, SE: 233SCSE, 28TSCSE, C: 625D 627D)	--	S*/D*	S*/D*	S*	--	S*
Hard Wall Shower with Residential Flush Toilet and Monitor for Holding Tanks, Battery and Water Pump Switch	--	--	--	--	S	--
Hard Wall Shower w/ Residential Flush Toilet (HS: T21DMHW Only)	--	--	--	--	--	S*
Spray Away Utility Hose	--	--	S	--	--	--
Antifreeze Inlet to Bypass Fresh Water Tanks When Winterizing	S	S	S	S	S	S
Fold Over Galley with Upper and Lower Storage (Std. C: 425D Only)	S	--	--	S*	--	--
Two Burner Free-Standing Range	S	--	--	--	--	--
Swing Level Galley with Storage (N/A C: 425D, 823D)	--	S	S	S*	--	--
Permanently Mounted 3-Burner Indoor Range w/ Stove Cover	--	S	S	--	--	--

MODELS	LTD	M	SE	C	HW	HS
Permanently Mounted 3-Burner Indoor Range w/ Glass Stove Top Cover	--	--	--	S	--	S
Three Burner Glass Top Stove with Oven (HS: T21QBHW Only)	--	--	--	--	S	S*
Microwave	--	--	--	--	S	S
Large Built-In Icebox	S	S	S	S	S	--
110V Electric Outside Accessible Refer (C: 627D Only)	--	--	--	S*	--	--
3 Way Refer 1.9 cu. ft.	0	0	0	--	--	--
3 Way Refer 2.5 cu. ft.	--	--	--	0	--	S
Extra Large 3 Way Refer (T19QBHW, T21QBHW, T21TBHW, T21DMHW Only)	--	--	--	--	0	S*
Free Standing Lite-Ply Table—High Pressure Laminate (Most Models)	S	S	S	S	S	S
Comfortable Family Style Dinette w/ 4" Cushions	S	S	S	S	S	S
Residential Style Raised Panel Doors	--	--	--	S	S	S
Wood Drawers w/ Full Extension Metal Guides	S	S	S	S	S	S
Large Clothes Bar	--	--	--	S	S	S
Hanging Wardrobe	--	--	--	0	0	0
Hanging Pantry	--	0	0	0	0	--
USB Charging Ports	--	S	S	S	S	S
AM/FM Stereo with CD player	--	--	--	S	S	S
AM/FM Stereo with CD and DVD player (HW29SC Only)	--	--	--	--	S*	--
Digital Media Receiver w/ Bluetooth, MP3 Player, USB & Aux. Ports	--	--	S	--	--	--
TV Outlet with Cable and Satellite Hook Up	--	S	S	S	S	S
LCD TV (HW29SC Only)	--	--	--	--	S*	--
30 Amp Detachable Power Cord w/ Storage Bag	--	S	S	S	S	S
25 Amp Converter w/ Built in Battery Charger	S	--	--	--	--	--
35 Amp Converter w/ Built in Battery Charger	--	S	S	S	S	S
12V Safety Breaker	S	S	S	S	S	S
Roof Vent	S	--	--	--	--	--
Three Speed Ventilation Fan	--	SO	SO	SO	SO	SO
Air Conditioner Wiring Kit	0	0	0	0	0	--
10k BTU Cool Cat Heat Pump	--	--	--	--	--	S
13.5k BTU Low Profile Air Conditioner (Factory Installed)	--	--	--	--	0	--
15k BTU Low Profile Air Conditioner (Factory Installed)	--	--	--	--	0	--

MODELS	LTD	M	SE	C	HW	HS
20k BTU Forced Air Furnace w/ Electric Ignition	0	0	0	0	0	0
Interior Floor Lights	--	--	--	--	S	S
2 Ceiling LED Lights and Jacks for Accessories	S	--	--	--	--	--
2 Ceiling LED Lights	--	--	--	--	--	S
3 Ceiling LED Lights and Jacks for Accessories	--	S	S	S*	--	--
4 Ceiling LED Lights and Jacks for Accessories (C: 627D Only)	--	--	--	S*	S	--
Bunk LED Light with Fan	--	--	--	S	S	--
LED Bunk Light (M: 228D, 246D, SE: 233SCSE, 28TSCSE Only)	--	S*	S*	S	S	--
LP Leak/Carbon Monoxide Detector	S	S	S	S	S	S
Privacy Curtains	S	CP	CP	CP	CP	S
Deluxe Pull Up Curtains	--	--	--	S	S	--
Roof Valances	--	CP	CP	CP	CP	--
Storage Net Over One Bunk (HW: N/A HW31SCTH)	--	S	S	S	S*	--
Quilted Top Bed Mattresses	S	S	S	--	--	--
Deluxe Memory Foam Quilted Top Bed Mattresses (HS: T21TBHW Twin Beds Converts to King)	--	--	--	--	--	S*
Quilted Top Innerspring Mattresses (HS: T12RB, T12RBS, T12RBBH, T12RBTH Only)	--	--	--	S	S	S*
Quilted Top 60" x 80" Innerspring Mattresses (HS: T19QBHW T21QBHW, T21DMHW Only)	--	--	--	--	--	S*
Thermostatically Controlled Heated Mattresses (HS: T12RB, T12RBST, T12RBBH, T12RBTHSE, T19QBHW, T21QBHW, T21DMHW Only)	SO	SO	SO	SO	SO	S*
Leaf-Spring Axle	S	S	S	--	--	--
Independent Torsion Axles	--	--	--	S	S	S
Easy Lube Axles	--	S	S	S	S	S
Spare Tire, Cover and Mount	S	TP	TP	TP	TP	S
12" Radial Tires	S	--	--	--	--	--
13" Radial Tires w/ Aluminum Wheels (HS: Except T12RBTHSE, T12RBSSE, T21QBHW, T21TBHW, T21DMHW)	--	S	--	S	--	S*
14" Radial Tires w/ Aluminum Wheels (Std. HS: T21QBHW, T21TBHW, T21DMHW)(Note: Dual Axle Models HW29SC, HW31SCTH)	--	--	--	--	S	S*



MODELS	LTD	M	SE	C	HW	HS
15" Mud Rover Radial Tires, Aluminum Wheels (Std. <b>HS:</b> T12RBTHSE, T12RBSSE Only, <b>SE:</b> 176SE, 206STSE, 207SE, 228BHSE) W/ Shocks (Std. <b>SE:</b> 23SCSE, 28TSCSE Only)(Note: Dual Axle <b>SE:</b> 28TSCSE)	--	--	S*	--	--	S*
Electric Brakes	0	S	S	S	S	S
Slam Latches on Front Trunk Side Doors ( <b>C:</b> 823D, 425D, 625D Only)	--	--	--	S*	--	--
EZ Reach Storage with Sliding Tray All Front Trunk Models and Rear O/D Under Bed Storage ( <b>HS:</b> T19QBHW, T21QBHW, T21DMHW)	--	S*	S*	S*	--	S*
28.5" Front Storage Deck w/ 200 # Weight Capacity (Std. <b>SE:</b> 228BHSE, <b>HS:</b> T12BH Only)	--	S*	S*	--	--	S*
54" Frt. Storage Deck w/ 650 # Wt. Capacity (Std. <b>SE:</b> 23SCSE)	--	S*	S*	--	--	--
57" Frt. Storage Deck w/ 650 # Wt. Capacity (Std. <b>HS:</b> T12RBTHSE)	--	--	--	--	--	S*
105" Front Storage Deck w/ 1300 # Weight Capacity (Std. <b>SE:</b> 28TSCSE, <b>HW:</b> HW31SCTH Only)	--	S*	S*	--	S*	--
Toylok Mounted Locking System (Std. <b>HS:</b> T12BH, <b>SE:</b> All Models)	--	S*	S	--	S*	S*
(4) Bike Rack (N/A <b>SE:</b> 23SCSE, 28TSCSE <b>HS:</b> T12RBTHSE) (Note: <b>HS:</b> T12RB - 2 Bikes only)	0	0*	0*	0	0*	0*
ProRac Systems Permenate Mount Cross bars	--	--	S	--	--	--
ProRac Systems Upright Bike Carrier	--	--	0	--	--	--
ProRac Systems Kayak Carrier	--	--	0	--	--	--
ProRac Systems Load Stops	--	--	0	--	--	--
ProRac Systems Tie Downs	--	--	0	--	--	--
Power Lift System (Std. <b>SE:</b> 23SCSE 28TSCSE)	0	0*	0*	S	S	--
Gas Strut Lift Assist ( <b>HS:</b> N/A HW Models)	--	--	--	--	--	S*
Power Roof Lift Assist ( <b>HS:</b> T19QBHW, T21QBHW, T21TBHW, T21DMHW Only)	--	--	--	--	--	S*
Built-in A-Frame Mounting Provision for Equalizer Hitch Bar Installation	S	S	S	S	S	S

MODELS	LTD	M	SE	C	HW	HS
Battery Box and Wiring Kit	0	S	S	S	S	S
Solar Panel Prep	S	S	S	S	S	S
40 Watt Solar Panel	0	0	0	0	0	0
20 lb. LP Bottle	S	S	S	S	--	--
Dual 20 lb. LP Bottles with Cover and Automatic LP Regulator (Std. <b>SE:</b> 23SCSE, 28TSCSE Only)	0	0	0*	0	--	--
Dual 20 lb. LP Bottles with Molded Hard Cover and Automatic LP Regulator	--	--	--	--	S	S
Diamond Plated Lower Front Cap	--	--	--	S	S	S
Chrome Diamond Plated Front and Side Skirt	--	--	S	--	--	--
Awning	S	S	S	S	S	--
LED Under Awning Light Strip	--	S	S	S	S	--
Awning/Screen Room	--	--	--	--	--	0
Screen Room w/ Privacy Panels	0	0	0	0	0	--
Outdoor Gas Grill w/ Worktable	0	S	S	S	S	S
Outside Speaker	--	--	S	S	S	S
Patio Light ( <b>LTD:</b> 206LTD Only)	S*	CP	CP	CP	S	S
Courtesy Light on Front ( <b>SE:</b> 228BHSE 23SCSE, 28TSCSE, <b>HS:</b> All Models)	--	S*	S*	--	--	--
-- S	--	--	--	--	--	--
110V Exterior Outlet (206LTD only)	S*	CP	CP	CP	S	S
Black Water Hose Storage	--	--	--	--	S	--
Door Step	S	TP	--	TP	--	S*
Double Door Step ( <b>SE:</b> All Models, <b>HW:</b> All Models, <b>HS:</b> T12RBTH, T12RBSSE, T21QBHW, T21TBHW, T21DMHW)	--	--	TP	--	TP	S*
One Piece Screen Door	--	S	S	S	S	--
Vented Entrance Door Window w/ Screen	--	--	--	--	--	S
Folding Grab Handle	--	S	S	S	S	S
Exterior Graphic Design	S	S	--	S	S	S
<b>Travel Pack</b> (Incl. Spare Tire, Tire Bracket, Tire Cover, Installed Step)	--	0	0	0	0	--
<b>Convenience Pack</b> (Incl. Privacy Curtains, Roof Valances, A/C Bracing, Patio Light, 110V Exterior Outlet)	--	0	0	0	0	--

MODELS	LTD	M	SE	C	HW	HS
<b>STANDARD CONSTRUCTION FEATURES</b>						
Completely Enclosed Living Area	--	--	--	--	--	S
Fiberglass Vacuum Bonded Roof with Metal Interior Roof	--	--	--	--	--	S
Large Rear Roof Tinted Sky Light with Shade	--	--	--	--	--	S
Two Front Roof Tinted Windows with Shades (NA on Dormer units)	--	--	--	--	--	S
Fiberglass Vacuum Bonded Radius Roof w/ No Center Seam	S	S	S	S	S	--
Steel Air Conditioner Reinforcing Laminated Into Roof	S	CP	CP	CP	S	--
CP 3-Stage Double Arm Lifter Posts	S	S	S	S	S	--
Smooth Tan Fiberglass Vacuum Bonded Exterior w/ Black Accents	--	--	--	S	S	S
Lower Door Operational in Closed Position	S	S	S	S	S	--
Five Piece Sectionalized Vinolon Supreme Tenting	S	S	S	S	S	--
Tent Permanently Attached on Bunk Ends and Slide Out	S	S	S	S	S	--
Plywood Bunk Ends	S	S	S	S	S	--
Full Perimeter Aluminum Bed Frames	S	S	S	S	S	--
Easy Glide Scissor Pole Bed Supports	--	S	S	S	S	--
Powder Coated Rafter Poles and Bed Bows	S	S	S	S	S	--
Tinted Vinyl Windows	S	S	S	S	S	--
Large, Opening Picture Window	--	--	--	--	--	S
One Piece Undercoated Structure Wood Floor	S	S	S	S	S	S
Powder Coated Tubular Steel Frame	S	S	S	S	S	S
Rear Crank Down Stabilizer Jacks w/ Sand Pads	S	--	--	--	--	--
(4) E-Z Crank-Down Stabilizer Jacks w/ Sand Pads	--	S	S	S	S	S
Seamless, High Density Polyethylene Wheel Wells	S	S	S	S	S	S
11 Gallon Fresh Water Tank	S	--	--	--	--	--
Under Floor 20 Gallon Fresh Water Tank	--	S	S	S	S	S
12 Gallon Gray Water Holding Tanks	--	--	--	--	--	S
12 Gallon Black Water Holding Tank	--	--	--	--	--	S
2000 lb. Tongue Jack w/ Swivel Wheel	S	S	S	S	S	S
Power Front Jack	--	--	--	--	0	0
7-Way Pigtail Plug	S	S	S	S	S	S

LTD = LIMITED, M = MAC, SE = SPORTS ENTHUSIAST PACKAGE, C = CLASSIC, HW = HIGH WALL, HS = HARD SIDE / HARD SIDE HW / HARD SIDE SE

S = STANDARD, 0 = OPTIONAL, -- NOT AVAILABLE, TP OR CP = OPTION PACKS, \* = SELECTED MODELS



### PRE-DELIVERY INSPECTION FACILITY

20,000 square feet of quality assurance. The bare essentials for a premium product. This state-of-the-art facility gives immediate daily feedback to production for quality assurance in every unit built.

### CUSTOMER SATISFACTION



[www.ForestRiverBuyLocal.com](http://www.ForestRiverBuyLocal.com)

### 24/7 EMERGENCY ROADSIDE ASSISTANCE

For a worry-free ownership experience

Forest River includes one

year of Coach-Net RV Technical & Roadside Assistance with each RV purchase. Whether new to the RV lifestyle or an experienced RV enthusiast, Forest River owners have 24/7 access to technical, operational and emergency road service coverage throughout the US & Canada.

Coach-Net's fast, dependable service is just a phone call away.

**Coach-Net**<sup>®</sup>  
RV Technical & Roadside Assistance

### LOOK FOR OUR OTHER POPULAR LINES OF FLAGSTAFF CAMPING TRAILERS.



Flagstaff V-Lite, Classic Super Lite Travel Trailers & Fifth Wheels



Flagstaff Super V, Super Lite Travel Trailers & Fifth Wheels



Flagstaff Micro Lite & Shamrock

### FLAGSTAFF

# Warranty

For details on Flagstaff's complete warranty program, see your Flagstaff dealer.

When it comes to backing products with the same quality and commitment it does when it begins the manufacturing process, the only name you have to remember when you're looking for a recreational vehicle is Flagstaff. Flagstaff offers the following additional limited warranties to the original purchasers. Consult written warranty for details.

1. Five-year roof warranty (Excludes Hardsides),
2. Twenty-five-year floor warranty,
3. Five-year frame warranty,
4. Five-year tent warranty,
5. Ten-year warranty on torsion axle suspension,
6. Limited lifetime warranty of lifter system (Excludes Hardsides),
7. One-year bumper to bumper. Ask your dealer about the available lifetime structural warranty.



#### Learn More

Scan this barcode using a QR Reader on your smart phone to learn more about Forest River.



A Berkshire Hathaway company.



201 WEST ELM MILLERSBURG, IN 46543 [WWW.FORESTRIVERINC.COM/FLAGSTAFF](http://WWW.FORESTRIVERINC.COM/FLAGSTAFF) 574.642.2640

YOUR FLAGSTAFF DEALER

### Specification Definitions

**GVWR (Gross Vehicle Weight Rating)** - is the maximum permissible weight of the unit when fully loaded. It includes all weights, inclusive of all fluids, cargo, optional equipment and accessories. For safety and product performance do NOT exceed the GVWR.

**GAWR (Gross Axle Weight Rating)** - is the maximum permissible weight, including cargo, fluids, optional equipment and accessories that can be safely supported by a combination of all axles.

**UVW (Unloaded Vehicle Weight)\*** - is the typical weight of the unit as manufactured at the factory. It includes all weight at the unit's axle(s) and tongue or pin and LP Gas. The UVW does not include cargo, fresh potable water, additional optional equipment or dealer installed accessories.

\*Estimated average based on standard build optional equipment.

**CCC (Cargo Carrying Capacity)\*\*** - is the amount of weight available for fresh potable water, cargo, additional optional equipment and accessories. CCC is equal to GVWR minus UVW. Available CCC should accommodate fresh potable water (8.3 lbs per gallon). Before filling the fresh water tank, empty the black and gray tanks to provide for more cargo capacity.

\*\*Estimated average based on standard build optional equipment

Each Forest River RV is weighed at the manufacturing facility prior to shipping. A label identifying the unloaded vehicle weight of the actual unit and the cargo carrying capacity is applied to every Forest River RV prior to leaving our facilities.

The load capacity of your unit is designated by weight, not by volume, so you cannot necessarily use all available space when loading your unit.

All information contained in this brochure is believed to be accurate at the time of publication. However, during the model year, it may be necessary to make revisions and Forest River, Inc., reserves the right to make all such changes without notice, including prices, colors, materials, equipment and specifications as well as the addition of new models and the discontinuance of models shown in this brochure. Therefore, please consult with your Forest River dealer and confirm the existence of any materials, design or specifications that are material to your purchase decision. Litho. U.S.A. FOR 1386 W: 2017.02.24