

Sandpiper



Find us on Facebook
keyword "Sandpiper RV's"

DESTINATION SERIES



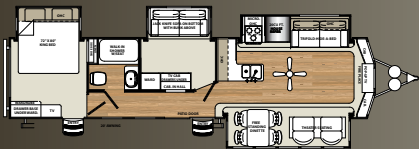
1





385FKBH

BRANDY DECOR



Sandpiper

AT HOME ON THE ROAD.

The 385FKBH is the ultimate floorplan for the family with children that doesn't want to give up their valuable living room area. Equipped with a theater seat and hide-a-bed sofa, LED HDTV, premium sound bar and Sony DVD player, this floorplan delivers the true comfort of home. Don't forget that mom and dad's retreat is the master suite at the other end of the unit, while the kids have their own bunkroom.

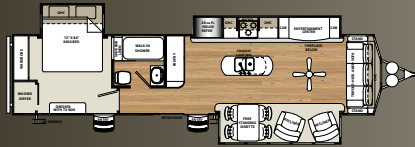






401FLX

CHESTNUT DECOR



Sandpiper

THOUGHTFUL DESIGN.

The 401FLX is the ultimate “open concept” floorplan. It offers opposing slideouts in the living area that creates a great floor space for relaxing. It also offers ample pantry space, washer/dryer prep and a great island kitchen. The “atrium” window layout on the door side offers you a great view of nature’s beauty.

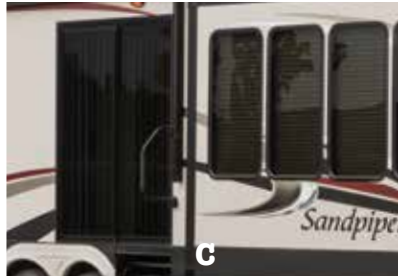




A



B



C



D



E



F



I



G



H

5

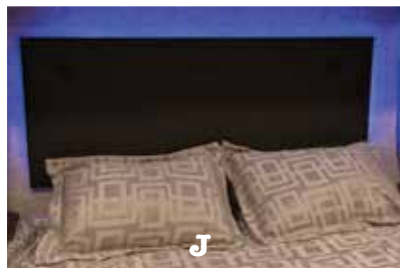
EXTERIOR FEATURES

- A** SANDPIPER'S CONTROL PANEL ALLOWS YOU TO MONITOR TANKS AND OTHER SYSTEMS QUICKLY AND EASILY.
- B** GEL COAT FIBERGLASS PROTECTS FROM UV RAYS AND PREVENTS YELLOWING AND CRACKING
- C** 60" PATIO DOOR WITH TINTED GLASS AND VERTICAL BLINDS
- D** 16" E RATED RADIAL TIRES

- E** HEATED AND ENCLOSED UNDERBELLY PROTECTS YOUR COACH AND IMPROVED AIRFLOW ALLOWS FOR A STURDIER RIDE
- F** DRIP RAIL WITH EXTRA LONG DRIP SPOUTS HELP PREVENT BLACK STREAKING.
- G** THE RADIUS ROOF LINE OF THE SANDPIPER DESTINATION SERIES ALLOWS FOR A 94" INTERIOR HEIGHT.
- H** ABS TANK COVER WITH 2-30 LB. LP TANKS.

- I** OPTIONAL EXTERIOR KITCHEN ON THE 402QB INCLUDES A SINGLE LEVER FAUCET, DEEP BOWL SINK, MINI REFRIGERATOR, ABUNDANT STORAGE AND BUMPER MOUNTED SWING ARM GAS GRILL.

Sandpiper



INTERIOR FEATURES

- A** HANDCRAFTED FASCIA GIVES THE SLIDE-OUT A DISTINGUISHED LOOK.
- B** SERTA MEMORY FOAM MATTRESS
- C** LED HDTV WITH PREMIUM SOUNDBAR AND SONY DVD PLAYER
- D** LED INTERIOR LIGHTING. OUR LED LIGHTS ARE 40% MORE EFFICIENT THAN INCANDESCENT LIGHTS.

- E** CONTEMPORARY CEILING FAN.
- F** REAL WOOD DRAWERS ON SOFT CLOSE, FULL EXTENSION, BALL BEARING DRAWER GUIDES
- G** ENJOY THE WARMTH AND COMFORT OF THE ELECTRIC FIREPLACE.
- H** MOCHA ACCENTED CROWN MOLDING GIVES THE SANDPIPER KITCHEN A TRULY RESIDENTIAL FINISH.

- I** CONTROL THE TEMPERATURE WITH THE DUAL ZONE DOMETIC® THERMOSTAT.
- J** CONTEMPORARY MASTER BEDROOM HEADBOARD WITH INTEGRATED LED LIGHTING
- K** THEATER SEATING WITH FOOTRESTS, HEAT AND MASSAGE, LED LIGHTING AND CONSOLE STORAGE. (PER FLOORPLAN).
- L** PORCELAIN FOOT FLUSH TOILET, EASY TO USE, EASY TO CLEAN.

STANDARDS AND OPTIONAL FEATURES

EXTERIOR FEATURES

- High gloss gel coated color matched exterior fiberglass
- Enclosed and heated dump valves
- Large tinted windows with 80/20 UV prohibitor
- Dexter auto adjust brakes
- Hickory Springs™ radius triple steps with 9" riser (no pinched fingers)
- Dometic™ "One-Touch" electric awning with adjustable arms, and integrated LED light
- 16" Radial tires-E Rated
- Automotive-style fender skirts
- Hitch light
- Porch light with interior switch
- Patio recreation light with interior switch
- 30 lb. double LP tanks with auto change over
- 2 exterior speakers
- Rain gutters with extra long drip spouts (prevents black streaking)
- Exterior folding grab handle
- 60" Patio door

INTERIOR FEATURES

- 94" interior height with 6'4" slide heights
- Radius "barreled" ceiling
- Residential stain resistant carpet
- Rustic Plank pattern Beauflor® linoleum
- Swivel glider recliners
- Four color coordinated interiors (Chestnut, Cream, Pecan, Brandy)
- Full extension ball bearing drawer glides
- Stone cast under mounted kitchen sink
- Washer/dryer prep (select floorplans)
- Handmade cabinetry with screwed lumber core stile construction
- Residential countertops
- Dual zone A/C prep (living room and bedroom)
- Recessed residential LED lighting throughout
- Colored shower surround with etched tile pattern
- Upgraded adjustable shower head with shelf
- Accent paneling in slideouts
- Accent lighting over dinette
- Walk-in shower (select models)
- Crown molding over kitchen cabinets
- Extra large picture windows throughout
- Vented side windows in slideouts
- TV antenna with booster
- Solid wood drawer fronts with birch sides

- Upgraded raised panel cabinet doors with designer rails
- Bedroom slideout fascia
- Serta® memory foam mattress
- 20 cu. ft. stainless steel refrigerator
- Stainless steel kitchen package
- 40" LED HDTV with Sony DVD and premium soundbar
- Designer window treatment accented per decor
- Ceiling fan
- Hide-a-bed sofa with tri-fold
- Residential carpeting
- Center mounted A/C unit for even cooling
- Quilted bedspread
- Home decor package
- Trash receptacle in kitchen

APPLIANCES/SYSTEMS

- Ducted Dometic® 15K A/C
- Dual zone thermostat for living room and bedroom A/C
- Floor ducted 35,000 BTU furnace
- Three burner High output range with 22" oven
- 20 cu. ft. stainless steel refrigerator
- Interior monitor panel for holding tanks
- Interior thermostat for heating and cooling
- Flush floor hydraulic slideouts (per floorplan)
- Satellite and cable hookup with RG-6 cable for high quality picture
- Porcelain foot flush toilets
- Full coach water filtration system
- 10 Gal. DSI water heater
- 65 Amp converter
- Water filter system
- Fantastic fan in bath

CONSTRUCTION

- Welded aluminum-framed, vacuum bonded laminated superstructure
- 2" x 3" floor joists 12" on center
- 5/8" tongue & groove plywood floor decking
- 3/8" roof decking (full walk-on roof)
- Cambered powder coated frame with rust prohibitor
- Fully enclosed heated underbelly
- 5" truss roof rafters
- R-10 sidewall construction

FOR YOUR SAFETY

- Smoke alarm
- Fire extinguisher
- Breakaway switch (battery hook-up required)
- Dead-bolt lock on entry door
- Liquid propane (LP) gas detector
- Fire escape windows

POPULAR OPTIONS

- Solid surface countertops in kitchen
- Free-standing dinette with 4 chairs
- Washer and dryer (per floorplan)
- Sofa IPO bottom bunk (per floorplan)
- Second air conditioner-bedroom
- Fantastic fan with power hood operated with wall switch
- 12 Volt heated holding tanks
- R-38e Insulation package
- Tile pattern Beauflor® linoleum
- Central vacuum
- Bedroom ceiling fan
- Roof ladder

POLAR TECH PACKAGE

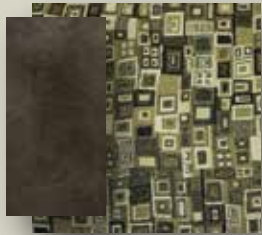
- Thermal pane windows
- Heated holding tanks
- R-38e roof & all floors insulation
- 40K BTU furnace
- Double fiberglass insulation in roof & floor

SANDPIPER SIGNATURE PACKAGE

- Residential stain resistant carpet
- Serta® memory foam mattress
- Radius 94" cathedral ceilings
- "One Touch" Dometic® electric awning w/LED lights
- Stainless steel kitchen package
- 15K BTU air conditioner
- King bed standard
- Ceiling fan in living room
- Décor package
- 50 amp service
- High gloss gel coated fiberglass color matched exterior
- 10 gal. G/E water heater w/DSI
- Residential pullout kitchen faucet
- 20 cu. ft. stainless steel refrigerator
- Tinted patio door
- 40" LED HDTV with Sony DVD and premium soundbar
- Washer/dryer prep (where available)
- Fantastic fan in bathroom
- Tri-fold hide-a-bed
- Tile pattern Beauflor® linoleum



DECOR OPTIONS



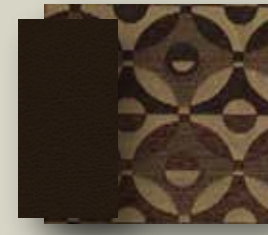
CHESTNUT INTERIOR



CREAM INTERIOR



PECAN INTERIOR



BRANDY INTERIOR



SEARCH YOUTUBE FOR
A VIDEO FEATURING
OUR CONSTRUCTION
PROCESS

CONSTRUCTION

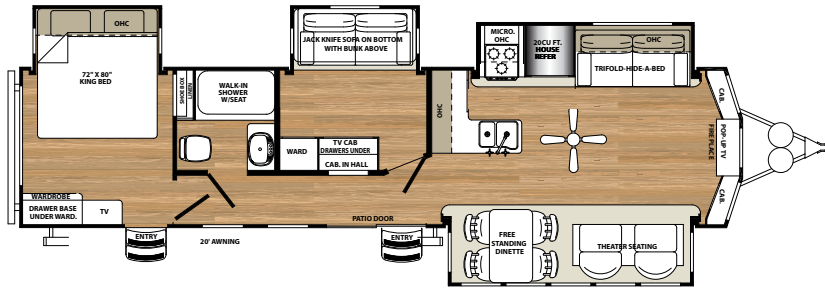
- A. ROLLED ALUMINUM SIDED SKIRTING
- B. SAFETY GLASS TINTED WINDOWS (80%)
- C. DUCTED 15K BTU AIR CONDITIONING
- D. DEXTER AXLES WITH AUTO ADJUST BRAKES
- E. LAMINATED VACUUM BONDED ALUMINUM SIDEWALLS
- F. E RATED RADIAL TIRES
- G. HICKORY SPRINGS™ RADIUS ENTRY STEPS
- H. SEAMLESS RUBBER ROOF (12 YR. WARRANTY)
- I. BLOCK FOAM INSULATION
- J. RESIDENTIAL STAIN RESISTANT CARPET W/PADDING
- K. 3/8" ROOF DECKING (FULL WALK-ON ROOF)
- L. 5/8" TONGUE AND GROOVE PLYWOOD FLOORING
- M. ENCLOSED HEATED UNDERBELLY
- N. I-BEAM POWDER-COATED FRAME
- O. 60" PATIO DOOR WITH TINTED GLASS AND VERTICAL BLINDS
- P. RADIUS 94" CATHEDRAL CEILINGS
- Q. SLEEK RADIUS ROOF
- R. HIGH GLOSS GEL-COATED COLOR MATCHED FIBERGLASS EXTERIOR
- S. TWO (2) 30 LB. LP TANKS



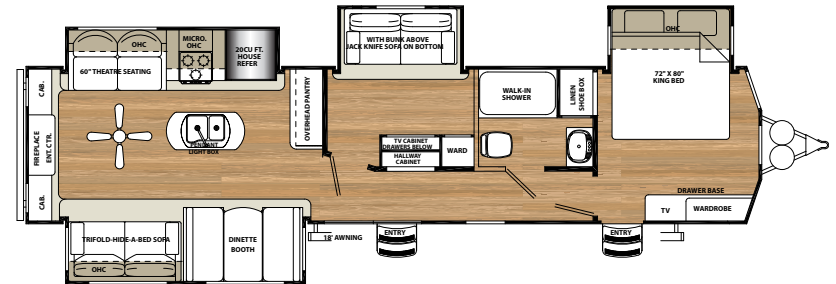
BUILT TO LAST

The Sandpiper is built to last using only the best materials to ensure that your coach is in it for the long haul. Careful engineering, well appointed craftsmanship and an uncompromising sense of pride go into every unit that we produce. Rest assured that your Sandpiper is built for luxury living.

385FKBH



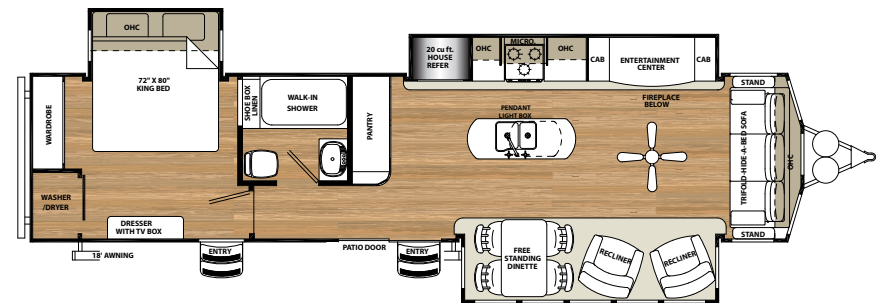
391SAB



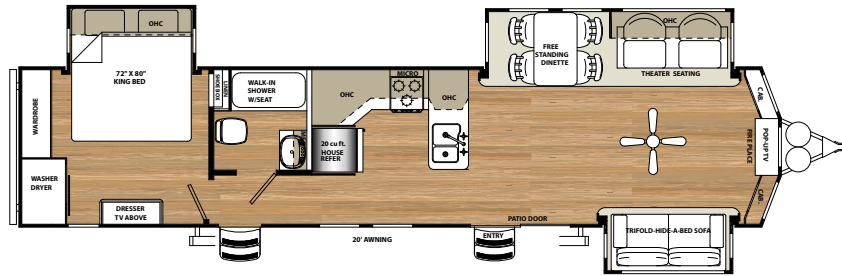
9



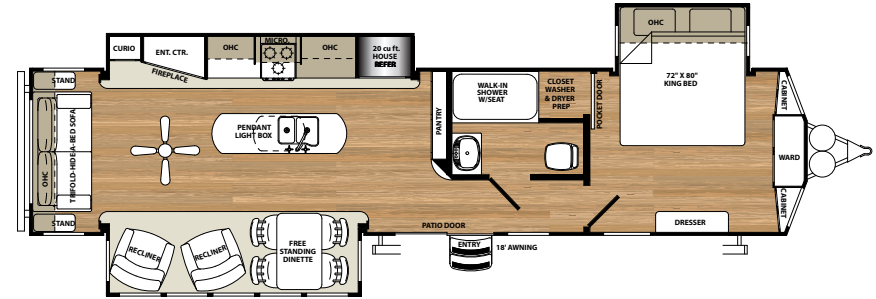
401FLX



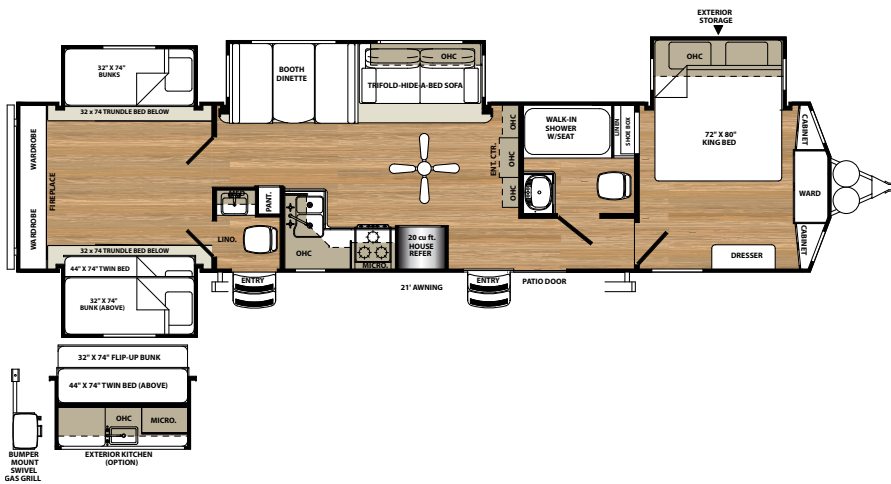
393CK



393RL



402QB



SPECIFICATIONS

MODEL	385FKBH	391SAB	393CK	393RL	401FLX	402QB
HITCH	1,615	1,406	1,245	1,379	1,841	1,180
UVW	11,049	11,062	10,287	10,726	10,830	11,289
GVWR	13,615	13,406	13,245	13,379	13,841	13,180
CARGO	2,566	2,344	2,958	2,653	3,011	1,891
LENGTH	40' 3"	41' 6"	42' 1"	41' 6"	40' 10"	43' 0"
HEIGHT	12' 7"	12' 7"	12' 7"	12' 7"	12' 7"	12' 7"
AWNING	20'	18'	20'	19'	17'	20'
GRAY	33	30	33	50	30	100
BLACK	66	75	66	83	80	133
FRESH	60	60	60	60	60	60

PLEASE SEE BACK COVER FOR MORE INFORMATION REGARDING WEIGHTS.

GVWR (Gross Vehicle Weight Rating) - is the maximum permissible weight of the unit when fully loaded. It includes all weights, inclusive of all fluids, cargo, optional equipment and accessories. For safety and product performance do NOT exceed the GVWR.

GAWR (Gross Axle Weight Rating) - is the maximum permissible weight, including cargo, fluids, optional equipment and accessories that can be safely supported by a combination of all axles.

UVW (Unloaded Vehicle Weight)* - is the typical weight of the unit as manufactured at the factory. It includes all weight at the unit's axle(s) and tongue or pin and LP Gas. The UVW does not include cargo, fresh potable water, additional optional equipment or dealer installed accessories.

*Estimated Average based on standard build optional equipment.

CCC (Cargo Carrying Capacity)** - is the amount of weight available for fresh potable water, cargo, additional optional equipment and accessories. CCC is equal to GVWR minus UVW. Available CCC should accommodate fresh potable water (8.3 lbs per gallon). Before filling the fresh water tank, empty the black and gray tanks to provide for more cargo capacity.

** Estimated average based on standard build optional equipment

Each Forest River RV is weighed at the manufacturing facility prior to shipping. A label identifying the unloaded vehicle weight of the actual unit and the cargo carrying capacity is applied to every Forest River RV prior to leaving our facilities.

The load capacity of your unit is designated by weight, not by volume, so you cannot necessarily use all available space when loading your unit.

All information contained in this brochure is believed to be accurate at the time of publication. However, during the model year, it may be necessary to make revisions and Forest River, Inc., reserves the right to make all such changes without notice, including prices, colors, materials, equipment and specifications as well as the addition of new models and the discontinuance of models shown in this brochure. Therefore, please consult with your Forest River dealer and confirm the existence of any materials, design or specifications that are material to your purchase decision.



Sandpiper



PRE-DELIVERY INSPECTION FACILITY

20,000 square feet of quality assurance. The bare essentials for a premium product. This state-of-the-art facility gives immediate daily feedback to production for quality assurance in every unit built.

CUSTOMER SATISFACTION



www.ForestRiverBuyLocal.com

24/7 EMERGENCY ROADSIDE ASSISTANCE

For a worry-free ownership experience Forest River includes one year of Coach-Net RV Technical & Roadside Assistance with each RV purchase. Whether new to the RV lifestyle or an experienced RV enthusiast, Forest River owners have 24/7 access to technical, operational and emergency road service coverage throughout the US & Canada. Coach-Net's fast, dependable service is just a phone call away.

Coach-Net[®]
RV Technical & Roadside Assistance



FREE MEMBERSHIP
to Forest River Owners' Group

www.forestriverfrog.com



Learn More

Scan this barcode using a QR Reader on your smart phone to learn more about Forest River.



A Berkshire Hathaway company.

Forest River, Inc.
55470 C.R. 1, Elkhart, IN 46515
(574) 389-4600
www.forestriverinc.com/Sandpiper
www.forestriveraccessories.com

YOUR LOCAL SANDPIPER DEALER



Find us on Facebook
keyword "Sandpiper RV's"