

Estate

EXQUISITELY CRAFTED AND GRANDLY APPOINTED

Cardinal

BY FOREST RIVER



3456RLES



OUR 3456RLES OFFERS MULTIPLE COUNTERTOP SPACES, AMPLE KITCHEN STORAGE AND STILL GIVES YOU PLENTY OF ROOM FOR ENTERTAINING.
(Shown with Eclipse Decor and Kensington Walnut Wood Grain)

YOUR HOME ON THE ROAD

THE BEDROOM HAS A STACKABLE WASHER DRYER PREP WITH A CEDAR LINED CLOSET AND DRESSER DRAWERS 72" X 80" KING BED, 32" TV AND DYSON CORDLESS VACUUM ALL STANDARD.



THE OPEN LIVING AREA FEATURES LARGE PICTURE WINDOWS AND POWER LIFT TV WITH A WINDOW LOCATED BEHIND. SHOWN IS THE STANDARD THEATER SEATING AND 90" SOFA.



THE LARGEST BATHROOM IN OUR SERIES PROVIDES YOU WITH DUAL SINKS AND VANITIES, A LARGE LINEN CLOSET AND A 6'11" CEILING HEIGHT.

INTERIOR FEATURES



60/40 Mega Bowl
Stainless Steel Sink
and High Rise
Spring Faucet



Furrion®
Oversized Oven



LG® Solid Surface
Kitchen Countertops



Furrion® Dual Burner
Induction Cooktop



23 cu. ft. Residential
Refrigerator with
Water and Ice Feature



Control Center with
Energy Management,
MyRV, Solar Prep
and WiFi Ranger



Furrion® Double
Drawer Dishwasher



Keyless Entry

EXTERIOR FEATURES



MORryde® CRE 4000
Suspension



MORryde® Pin Box



MORryde®
StepAbove
Entry Steps



Dual Metal Wrapped
Awning with
LED Lights
(Single 3950TZES)



3 Whisper
Quiet A/C Units
(15K, 13.5K, 13.5K)



Electric Power
Cord Reel



Welded Aluminum
Super Structure



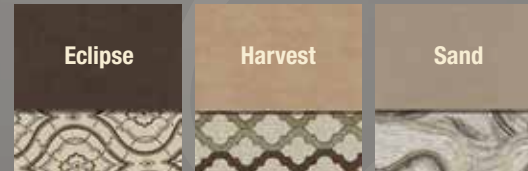
H-Rated Tires on
17.5" Aluminum Rims



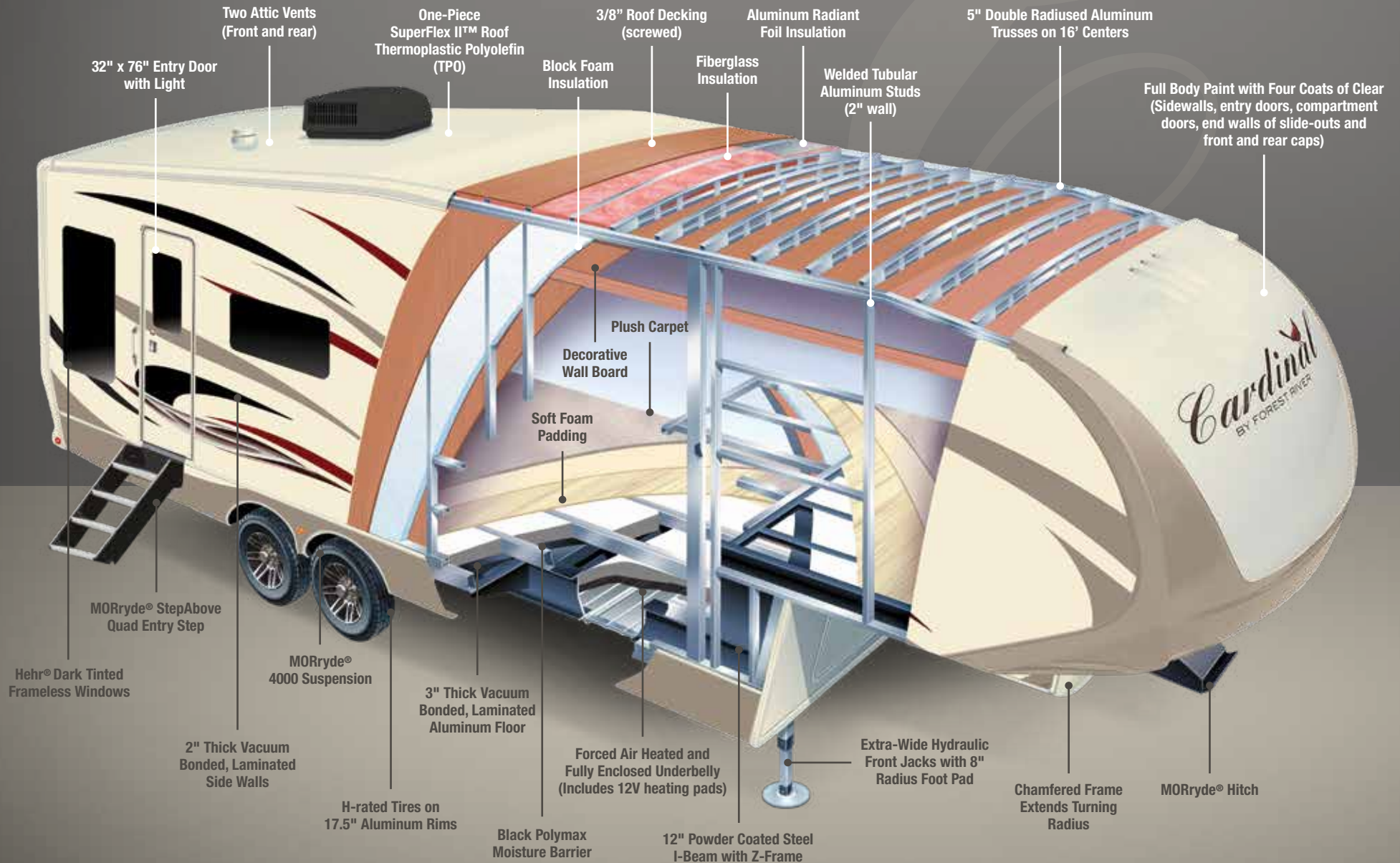
Dexter® 8,000 lb.
Axles
(Optional Disc
Brakes Available)

WIDE BODY CONSTRUCTION

DECOR OPTIONS



WOOD OPTIONS

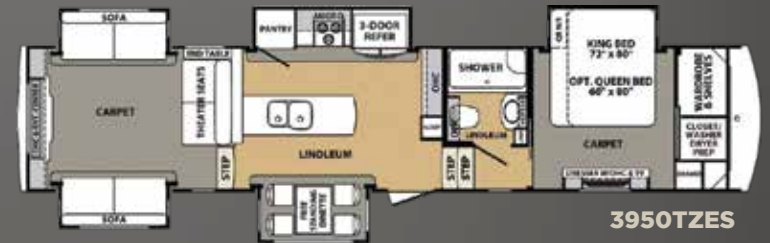
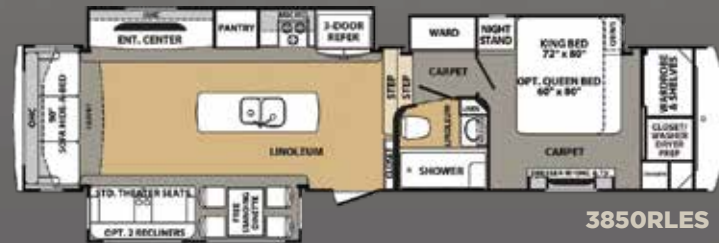
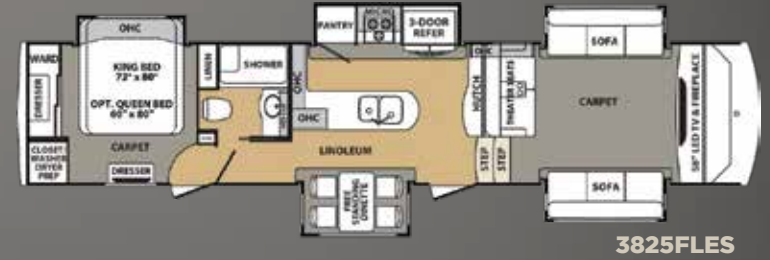


Estate

EXQUISITELY CRAFTED AND GRANDLY APPOINTED

Cardinal

BY FOREST RIVER



2018 CARDINAL ESTATE

	3456RLES	3825FLES	3850RLES	3950TZES
LENGTH (Center of pin to rear of cap)	40' - 8"	41' - 8"	39' - 6"	41' - 1"
SHIPPING WEIGHT	14343	14857	14128	15157
UVW	14402	14916	14187	15216
HITCH WEIGHT	2528	2598	2677	2780
GAWR	16000	16000	16000	16000
GVWR	18000	18000	18000	18000
CARGO CARRYING CAPACITY (CCC)	3598	3084	3813	2784
EXTERIOR HEIGHT	13' 6"	13' 6"	13' 6"	13' 6"
EXTERIOR WIDTH	100"	100"	100"	100"
INTERIOR HEIGHT (Bedroom)	81"	105"	81"	81"
INTERIOR HEIGHT (Living Area)	105"	81"	105"	88"
TIRE SIZE	LT215/75R17.5H	LT215/75R17.5H	LT215/75R17.5H	LT215/75R17.5H
BRAKE SIZE	12"	12"	12"	12"
FRESH WATER	64 gal.	64 gal.	64 gal.	64 gal.
WASTE WATER	120 gal.	120 gal.	120 gal.	120 gal.
WATER HEATER	12 gal.	12 gal.	12 gal.	12 gal.
FURNACE	42000 BTU	42000 BTU	42000 BTU	42000 BTU
PATIO AWNING	19'	6' - 6" & 14'	19'	16'
EXTERIOR STORAGE (Cu. Ft.)	138	107	150	232

STANDARDS AND OPTIONS

STANDARDS

INTERIOR

- Kensington Walnut or Monticello Maple Hardwood Raised Panel Glazed Cabinet Doors and Drawers
- Hardwood Maple Cabinet Frames (Stiles)
- Crown Molding Cabinet Accents
- Crown Molding Ceiling Trim
- Residential Hidden Hinge Adjustable Cabinet Hardware
- Solid Wood (Baltic Birch) Drawer Boxes
- Ball Bearing, Full Extension Drawer Guides
- Beauflor® Wood Plank Linoleum Flooring 7 Year cold crack warranty)
- Residential Carpet
- Wainscoting
- Satin Nickel Plumbing Fixtures
- Solid Wood Slide-out Fascia Frame
- Decorative Solid Wood Frame Entry Door
- Solid Wood Exit Assist Handle
- Cathedral Ceilings Throughout

GALLEY

- LG® Solid Surface Polished Counter Tops with Under Mount Sink (15 Year warranty)
- Dual Bowl "Giant" Stainless Steel Kitchen Sink
- Furrion® 2 Burner Induction Cooktop
- Furrion® Oversized Oven
- High End, Spring High-Rise Kitchen Faucet
- Stainless Steel Convection Microwave
- Stainless Steel Residential Refrigerator
- Auto Drawer Glides
- Maxx Air Fan with Rain Sensor and Remote
- Flush Floor Galley Slides
- Coat Closet (Where applicable)
- Hardwood Drawers in Pantry

INTERIOR LED LIGHTING

- LED Lighting Throughout
- Indirect LED Lighting
- Decorative Ceiling Light Above Dinette
- Ceiling Fan
- Pendant Lights in Galley
- Dimmer Switch (Living area only)

FURNITURE AND WINDOW COVERINGS

- Residential Franklin Furniture Theater Seats, 90" Three Seat Leather Rear Sofa with Hide-A-Bed and with Lifetime Frame Warranty
- Free Standing Dinette Table with Dual Leafs and Lift-up Storage
- (4) Residential Chairs (2) with Flip-up Storage (2) Folding
- Day/Night Roller Shades (Living area)
- Night Roller Shades (Bedroom)
- Solid Hard Wood Window Treatments (Where available)
- Designer Soffits (Where available)

BATHROOM

- Maxx Air Fan with Rain Sensor and Remote
- Solid Surface Polished Vanity Counter Top with Integrated Bowl (Residential height)
- Porcelain Toilet with Foot Flush
- "Mega" Fiberglass Molded Shower w/Seat
- Oversized Shower Skylight/Dome
- Glass Shower Door
- Adjustable Shower Head
- Medicine Cabinet with Mirrored Door
- Dedicated Heat and A/C Duct

BEDROOM

- Upgraded Deluxe King Mattress
- Solid Wood Head Board
- Designer Bedspread, Pillows and Sham
- Full Height Hanging Wardrobe
- Stackable Washer/Dryer Prep
- Washer/Dryer Dual Electrical Outlets (Operates W/D simultaneously)
- Shoe Caddy
- Cubby Storage
- Chest of Drawers
- Cedar Lined Closet and Drawers
- Under Bed Storage
- Solid Hardwood Slide-out Fascia Frame
- (2) Reading Lights with Individual Controls
- (2) Bed Side Power Outlets

APPLIANCES

- Residential Refrigerator with Inverter
- Furrion Double Drawer Dishwasher
- 30" Convection Microwave
- Dyson® DC35 Cordless Vacuum
- 42K BTU LP Furnace
- Fireplace
- 12 Gal. Gas/Electric DSI Water Heater
- "Shurflo" On-demand High Output Water Pump (3 g/min at 55 psi)
- (3) Ducted Dometic® Quiet Cool Air Conditioners (15K, 13.5K mid, 13.5K front)
- Dual 30 lb. Propane Bottles with Auto Switch Over
- LP Leak Detector
- Carbon Monoxide Detector
- Energy Management System

ELECTRONICS

- Bose® SoundTouch 300 Soundbar
- 58" LED TV (Main living area)
- 32" LED HDTV (Bedroom)
- MyRV Touch Screen Control
- Digital TV Antenna with Signal Booster
- JBL® Flip 4 Portable Bluetooth Speaker
- Samsung® Blu-Ray Player
- Cable TV Hook-ups (Main living, bedroom)
- Cable TV Hook-up (Exterior Garage Bulkhead)
- Satellite Prep (Roof mount)
- WiFi Booster

EXTERIOR

- Front Cap: Molded Fiberglass with Extended Turning Radius
- Rear Cap: Molded Fiberglass
- (2) High End Full Body Paint Schemes (Sikkens® auto paint w/ 4 coats of clear)
- Laminated Front Bulkhead
- Keyless Entry
- 32" X 76" Entry and Screen Door
- 45° Angled Skirting
- Slam Latch 1.5" Thick Insulated Doors
- Laminated Slide End Walls
- Automotive Hehr Frameless Windows
- Hydraulic Slide Room Power
- Individual Slide Room Selector Switches
- Roof Ladder
- Dual Aluminum Wrapped Electric Power Awnings with LED Light Strip (1-3950TZES)
- Entry Assist Handle (XL - folding)
- 1.5" Aluminum Belt Rail with Caps (No exposed screws)
- Roto-cast Spun Seamless Water/Waste Tanks
- Enclosed and Heated Underbelly (Forced air heat)
- Thermostatically Controlled Tank Heat Pads (12 Volt Electric) (Dual heating sources)
- Dual Roof Vents/Ventilated Attic
- LED Tail Lights and Rear Running Lights
- LP Quick Disconnect

SLIDE ROOM SEAL AND GASKET SYSTEM

- Aluminum "H" Frame Slide Room Perimeter
- Dual Neoprene Squeeze Seals
- Exterior and Interior "D" Seals
- Exterior "H" Seal

EXTERIOR LIGHTING

- LED Docking Lights (4 - mounted into front cap)
- Rear Cap Lighting: White Reverse and Red Running/Brake Lights
- Security Lights (2)
- Amber Patio Light
- Entry Door Auto Threshold Light
- LED Awning Lights

UTILITY DOCKING COMPARTMENT

- Light (12 Volt)
- Outside Shower (Hot and cold)
- Black Tank Flush System
- Fresh Water Heater Bypass Valve
- Full Coach Water Filtration System
- Winterizing Bypass System
- Protected/Insulated Pull Waste Valves
- Waste Hose Storage Tube
- Electric Power Cord Reel
- Nautilus Control

CHASSIS/FOUNDATION

- I-beam "Z" Frame Powder Coated Chassis
- Chamfered Frame Technology
- 12" I-beam Frames
- Dexter® 8,000 lb. Axles with Nev-R-Adjust® Brakes
- MORryde® 4000 Suspension System
- MORryde® 18K Extended Pin Box
- (8) Lug Hubs
- Aluminum Rims 17.5"
- Premium H-rated Tires
- Spare Tire (Inside storage mounted)
- Hydraulic Front Jacks
- 8" Radius Front Jack Pads
- Electric Rear Stabilizing Jacks
- MORryde® StepAbove Entry Steps
- Pinless Front Jack Legs
- Flush Floor Slide Design with Steel Ramp and Glide Bar (Main slide rooms)
- Hydraulic Slide System with 2" Steel Rams
- Hydraulic Pump Station with Manual Override

CONSTRUCTION

- 100" Wide Body Construction
- Sidewalls: 2" Welded Aluminum Framed Vacuum Bonded Laminated Walls
- Roof: 5" Double Radiused Aluminum Trusses 16" on Centers
- Roof: Alpha Super Flex II TPO Roof Material
- Front Wall: Welded Aluminum Frame
- Rear Wall: Welded Aluminum Frame
- Floor: 3" Vacuum Bond Laminated with Welded Aluminum Trusses
- Bath/Bed Deck: Welded Aluminum Frame
- Slide End Walls: 2" Welded Aluminum Frame, Laminated, Vacuum Bonded
- Slide Roof: 2" Welded Aluminum Frame, Laminated
- Slide Floor: 1" Wood Flooring
- No Expansion Gaps

INSULATION

- Sidewalls: High Density Block Foam Insulation (R-9)
- Roof: Fiberglass Batten Insulation and Radiant Foil Insulation (R-38)
- Main Floor: High Density Block Foam Insulation and Radiant Foil Insulation (R-38)
- Sub floor: Honey Combed Polyurethane with Aluminum Radiant Foil Insulation and Direct Forced Air Heat
- Front Cap: Fiberglass Insulation and Radiant Foil Insulation (R-38)
- Rear Cap: Fiberglass Insulation and Radiant Foil Insulation (R-38)

ELECTRICAL SYSTEMS

- Centralized Command Center and Monitor Panel
- 70 AMP Converter (Progressive Dynamics)
- 50 AMP Service
- Marine Grade 50 AMP Power Cord

- 12 Volt Battery Disconnect
- Battery Prep Box (2)
- Energy Management System
- Solar Panel Roof Prep

ESTATE ESSENTIAL CARDINAL CAMPING PACKAGE

- Furrion® RV Chef Collection Oversized Oven
- Furrion® RV Chef Collection 2 Burner Induction Cooktop
- Bose® SoundTouch 300 Soundbar
- JBL® Flip 4 Portable Bluetooth Speaker
- Samsung® Blu-Ray Player

CARDINAL ESTATE PACKAGE

- Furrion® 2 Burner Induction Stove Top
- High End Spring High Rise Kitchen Faucet
- Furrion® Double Drawer Dishwasher
- Electric Power Cord Reel
- (3) Dometic Quiet Cool Air Conditioners
- (4) Color Full Body High End Paint
- Upgraded Deluxe King Mattress
- Auto Drawer Glides in Kitchen
- Keyless Entry
- Dexter® 8,000 Lb. Axles
- H-Rated Premium Tires
- MORryde® 4,000 Suspension
- Lighted Kitchen Backsplash
- Stainless Steel Convection Microwave

OPTIONS

INTERIOR

- Queen Bed (IPO King)
- Extra Dinette Chair
- (2) Recliners (N/A 3825FLES, 3950TZES)
- Electric Theater Seats (N/A 3825FLES, 3850RLES)
- 32" Galley TV (3825FLES, 3950TZES)
- Stackable Washer/Dryer
- 18 cu. ft. 4 Door Gas/Electric Refer

EXTERIOR

- (3, 4 or 5) Slide-Out Awnings
- Heat Pump for 15,000 BTU AC
- Dual Pane Frameless Windows with Safety Glass
- Generator Prep
- 5.5 LP Generator (Includes prep)
- "Level Up" 6-Point One Touch Automatic Hydraulic Leveling System
- Outside Ice Maker
- Bike Hitch
- Exterior Entertainment Center with 32" LED TV
- Hydraulic Disc Brakes for Dexter® 8,000 lb. Axles Only
- 200 Watt Roof Mounted Solar Panel Installed
- Back-up Camera Monitor



PRE-DELIVERY INSPECTION FACILITY

20,000 square feet of quality assurance. The bare essentials for a premium product. This state-of-the-art facility gives immediate daily feedback to production for quality assurance in every unit built.

CUSTOMER SATISFACTION



www.ForestRiverBuyLocal.com

24/7 EMERGENCY ROADSIDE ASSISTANCE

For a worry-free ownership experience

Coach-Net®

Forest River includes one year of Coach-Net RV Technical & Roadside Assistance with each RV purchase. Whether new to the RV lifestyle or an experienced RV enthusiast, Forest River owners have 24/7 access to technical, operational and emergency road service coverage throughout the US & Canada. Coach-Net's fast, dependable service is just a phone call away.

FREE MEMBERSHIP
to Forest River Owners' Group

www.forestriverfrog.com



GVWR (Gross Vehicle Weight Rating) - is the maximum permissible weight of the unit when fully loaded. It includes all weights, inclusive of all fluids, cargo, optional equipment and accessories. For safety and product performance do NOT exceed the GVWR.

GAWR (Gross Axle Weight Rating) - is the maximum permissible weight, including cargo, fluids, optional equipment and accessories that can be safely supported by a combination of all axles.

UVW (Unloaded Vehicle Weight)* - is the typical weight of the unit as manufactured at the factory. It includes all weight at the unit's axle(s) and tongue or pin and LP Gas. The UVW does not include cargo, fresh potable water, additional optional equipment or dealer installed accessories.

*Estimated Average based on standard build optional equipment.

CCC (Cargo Carrying Capacity)** - is the amount of weight available for fresh potable water, cargo, additional optional equipment and accessories. CCC is equal to GVWR minus UVW. Available CCC should accommodate fresh potable water (8.3 lbs per gallon). Before filling the fresh water tank, empty the black and gray tanks to provide for more cargo capacity.

** Estimated average based on standard build optional equipment

Each Forest River RV is weighed at the manufacturing facility prior to shipping. A label identifying the unloaded vehicle weight of the actual unit and the cargo carrying capacity is applied to every Forest River RV prior to leaving our facilities.

The load capacity of your unit is designated by weight, not by volume, so you cannot necessarily use all available space when loading your unit.

All information contained in this brochure is believed to be accurate at the time of publication. However, during the model year, it may be necessary to make revisions and Forest River, Inc., reserves the right to make all such changes without notice, including prices, colors, materials, equipment and specifications as well as the addition of new models and the discontinuance of models shown in this brochure. Therefore, please consult with your Forest River dealer and confirm the existence of any materials, design or specifications that are material to your purchase decision.

STANDARD FULL BODY PAINT



GUNMETAL



PINOT GRIGIO



Learn More

Scan this barcode using a QR Reader on your smart phone to learn more about Forest River.



A Berkshire Hathaway company.

CARDINAL

3603 S. Nappanee St, Elkhart, IN 46517
(574) 296-7700
www.forestriverinc.com/Cardinal
www.forestriveraccessories.com

YOUR LOCAL CARDINAL DEALER