

# Flagstaff

SUPER LITE TRAVEL TRAILERS & FIFTH WHEELS

WE'RE  YOUR  
**LIGHT WEIGHT**  
SPECIALISTS  
EST. 1974



SUPER LITE TRAVEL TRAILERS & FIFTH WHEELS

Flagstaff





# We're building a legacy.



**TODAY, FLAGSTAFF IS COMMITTED TO INSURING THAT OUR CUSTOMERS ENJOY THEIR CAMPING EXPERIENCES.** With the utilization of our experienced work force, modern production facilities, a detailed production processes and an on-site “state of the art” lamination plant , Flagstaff is able to offer a quality product with value that is unmatched by other manufactures.

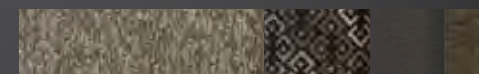


## THE TRADITION CONTINUES.



**THE TRADITIONAL FLAGSTAFF SUPER LITE TRAVEL TRAILERS AND FIFTH WHEELS CONTINUE TO PROVIDE UNSURPASSED VALUE AND COMFORT.** The spacious interiors offer numerous windows, 80" vaulted ceiling and ducted air conditioning with directional venting. Also included are solid surface kitchen counter tops with an under mount stainless steel two bowl sink. The cabinet doors and drawers are solid wood with a rich driftwood finish or the optional maple with a rich but lighter stained finish. Like to cook... we offer a larger oven with a glass fold down top that doubles as counter top space. Value you wont find in comparable products.

New this year is an exterior graphics package that will turn heads, plus three different interior fabric choices where most other manufactures limit you to no choices... only to what they feel you would like. Like to search the WEB without using up your data plan? WIFI Ranger WIFI Booster is now "Standard" in all of the Flagstaff Travel Trailers and Fifth Wheels. You can pick up a secure WIFI signal at longer distances. Again, value you won't find with most other manufactures.



**526RLWS**  
BOULDER / MAPLE





**THE TRADITIONAL FLAGSTAFF SUPER LITE TRAVEL TRAILERS AND FIFTH WHEELS CONTINUE TO PROVIDE UNSURPASSED VALUE AND COMFORT.** Flagstaff travel trailer models are loaded with features like polished alloy wheels and Nitro filled tires radial tires mounted to Dexter Torflex torsion axles for a smooth, safe ride. Also an enclosed underbelly to keep the underside of your trailer clean and protected from many of the road hazards along the way. Flagstaff also made standard the frameless bonded windows and an automotive front windshield when applicable to give you the great look you would expect from Flagstaff.

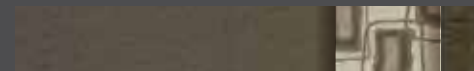


Standard White Exterior

*Featuring an aluminum framed with vacuum bonded construction, high gloss fiberglass exterior and deluxe graphics, the Super Lite is among the best constructed, most well insulated trailers available on the market today.*



Optional Champagne Exterior



## 27BHWS

REGAL / DRIFTWOOD

*Flagstaff Fifth Wheel models are loaded with features like the Reese Revolution hitch, power stabilizer jacks, slam latches on most storage doors and much more.*







The Tradition Continues



## 27BHWS

REGAL / DRIFTWOOD



Optional Champagne Exterior

## The tradition continues.

To continue our tradition, Flagstaff offers a number of built in features you wont find in other comparable products, like LED lighting, a standard power awning with an adjustable rain dump, a quick recovery auto ignition gas / electric water heater and a outside BBQ grill. With features like these and more, Flagstaff makes camping fun and easy.



FLAGSTAFF

# Travel Trailers

**YOU'LL LOVE WHAT YOU FIND IN OUR FLOOR PLANS.** Our trailers are packed full of quality features in order to bring to you one of the best values in the light weight market. There are spacious flush floor slides, comfortable stylish sofas and wide dinettes with easily adjustable legs. Our Super Lite series offers lots of room and amenities while still being a 1/2 ton towable Travel Trailer.

---

## 23FBDS

SPOKANE / MAPLE



6

Optional Champagne Exterior



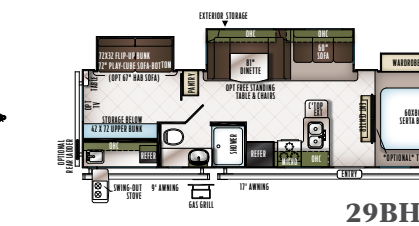
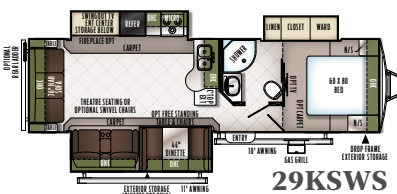
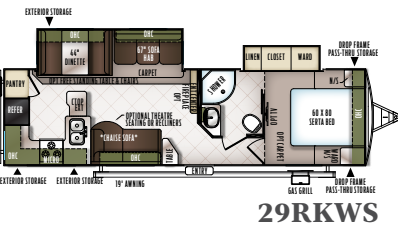
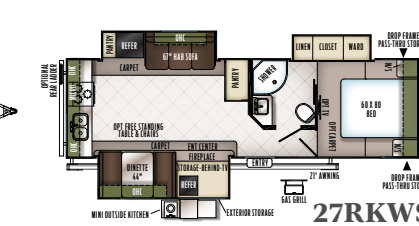
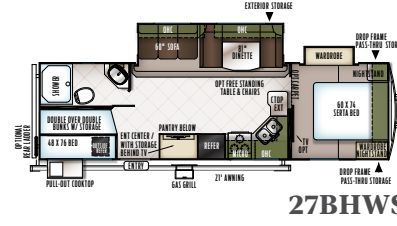
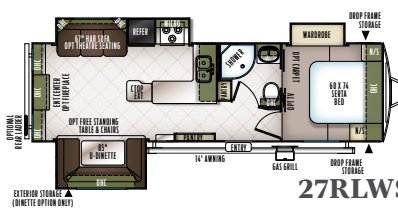
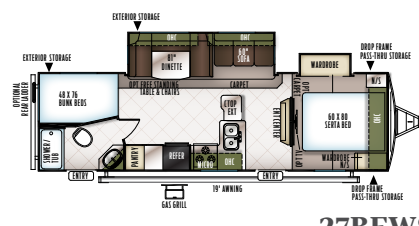
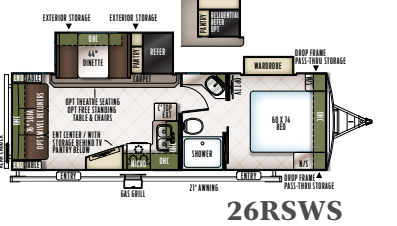
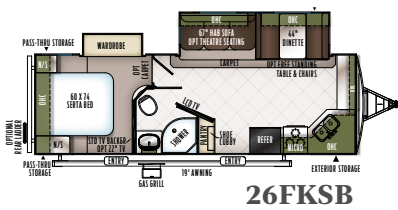
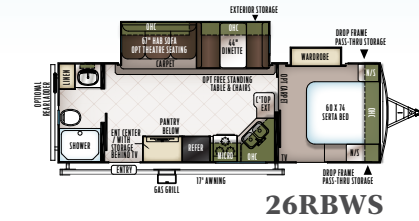
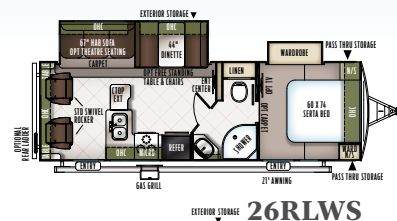
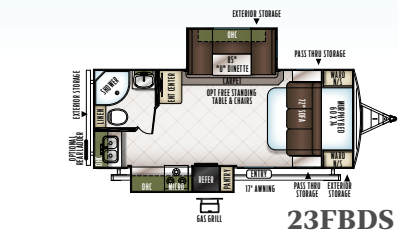
**23FBDS**  
SPOKANE / MAPLE



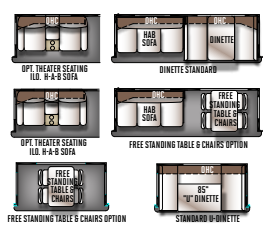
**23FBDS**  
SPOKANE / MAPLE



MURPHY BED DOWN



**SUPER SLIDE OPTIONS**



MODEL NUMBER	23FBDS	26RLWS	26RBWS	26FKSB	26RSWS	27BEWS	27RLWS	27BHWS	27RKWS	29RKWS	29KSWs	29BHWS
UNLOADED VEHICLE WEIGHT *	5598	6335	6036	6323	6133	6504	6842	6646	7077	6929	7275	7491
BASE DRY HITCH WEIGHT	660	796	864	832	908	900	854	804	706	764	914	914
BASE DRY AXLE WEIGHT	4879	5480	5113	5432	5166	5545	5929	5783	6312	6106	6302	6518
CARGO CAPACITY	2062	1461	1828	1509	1775	1436	2012	2158	1629	1835	1639	1423
LENGTH (HITCH TO BUMPER)	25' 1"	29' 9"	29' 9"	29' 11"	29' 9"	32' 3"	32' 3"	32' 10"	32' 3"	33' 9"	33' 11"	34' 11"
WIDTH	96"	96"	96"	96"	96"	96"	96"	96"	96"	96"	96"	96"
HEIGHT WITH A/C	134"	134"	134"	134"	134"	134"	134"	134"	134"	134"	134"	134"
FRESH WATER CAPACITY	43 gal	43 gal	43 gal	43 gal	43 gal	43 gal	43 gal	43 gal	43 gal	43 gal	43 gal	43 gal
GRAY WATER CAPACITY	45 gal	45 gal	45 gal	90 gal	45 gal	45 gal	45 gal	90 gal	90 gal	90 gal	45 gal	45 gal
BLACK WATER CAPACITY	45 gal	45 gal	45 gal	45 gal	45 gal	45 gal	45 gal	45 gal	45 gal	45 gal	45 gal	45 gal

The Unloaded Vehicle Weight (UVW) listed represents the weight of one trailer with that model's standard equipment including the content of specified option packages. \* See back cover for further specification definitions.



FLAGSTAFF

# Fifth Wheels

**SO YOU DIDN'T THINK YOU COULD PULL A FIFTH WHEEL?** The Flagstaff Super Lite Fifth Wheel models provide light weight alternatives with a variety of floor plans, features and options for owners of 1/2 ton pick up trucks. Equipped with a standard Reese Revolution Hitch, you can tow with almost any size truck bed. Take a close look and you will see that our Super Lite fifth wheels have been custom designed with the best in styling and amenities while keeping your towing needs in mind.

MODEL NO. | INTERIOR COLORS

**524RLBS**

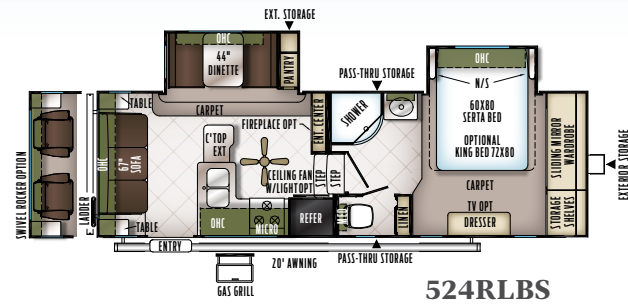
REGAL / MAPLE



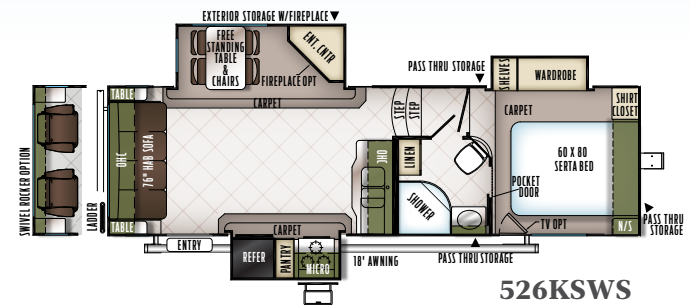
Optional Champagne Exterior



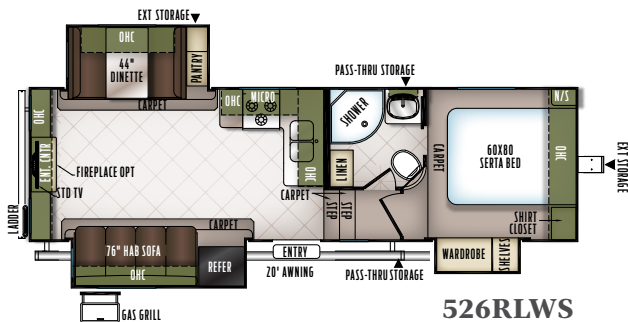




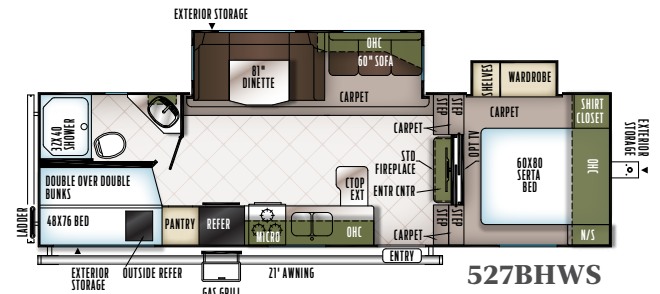
524RLBS



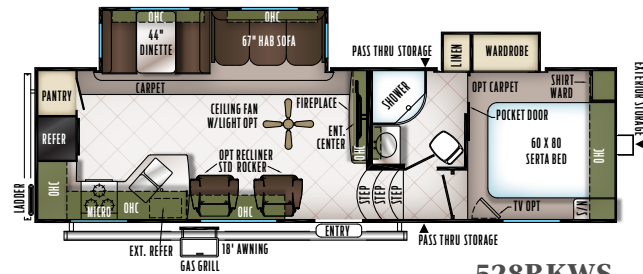
526KSWs



526RLWS

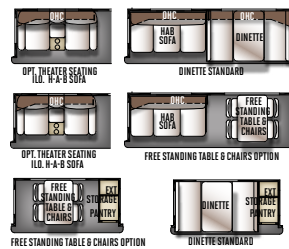


527BHWS



528RKWS

**SUPER SLIDE OPTIONS**



MODEL NUMBER	524RLBS	526RLWS	526KSWs	527BHWS	528RKWS
UNLOADED VEHICLE WEIGHT *	7226	7631	7501	7330	8127
BASE DRY HITCH WEIGHT	1080	1263	1450	1374	1235
BASE DRY AXLE WEIGHT	6087	6309	5992	5897	6833
CARGO CAPACITY	1854	1632	1949	2044	1708
LENGTH (HITCH TO BUMPER)	28' 2"	29' 8"	29' 8"	31' 1"	31' 11"
WIDTH	96"	96"	96"	96"	96"
HEIGHT WITH A/C	153"	153"	153"	153"	153"
FRESH WATER CAPACITY	43 gal	43 gal	43 gal	43 gal	43 gal
GRAY WATER CAPACITY	45 gal	45 gal	45 gal	82 gal	90 gal
BLACK WATER CAPACITY	45 gal	45 gal	45 gal	45 gal	45 gal

The Unloaded Vehicle Weight (UVW) listed represents the weight of one trailer with that model's standard equipment including the content of specified option packages.  
\* See back cover for further specification definitions.



FLAGSTAFF

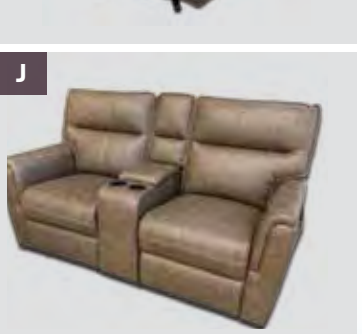
# Popular Features

**JUST A FEW FEATURES THAT MAKE US GREAT.** Flagstaff takes careful consideration to each feature added into each product produced. Every detail is considered ranging from extra sleeping room, storage, comfort and convenience. Take time to review the features listed below and match them with the competition's products. We're confident you'll discover Flagstaff is the superior choice.



- A** Power Awning with tilt adjustment and LED indirect lighting (Opt.)
- B** 32" LCD TV with a sound bar and the stereo system with \*Bluetooth Technology. (Selected Models)
- C** Radius Glass Door Shower (N/A Models with Tub Bases)
- D** Solid surface kitchen counter tops with flush mount sinks
- E** Water Filtration System (Std. )
- F** Outside shower (Std. )
- G** Deluxe tri-fold sleeper sofa w/easy set up queen bed.(Per floorplan)





**A** Rear camera prep. (Std. all models) The Furrion observation camera system with digital wireless technology is sold separately.

**B** Forest River switch center (Std.)

**C** WiFi Ranger WiFi Booster, providing a secure WiFi connection for your WiFi. (Std.)

**D** The Reese Revolution pin box provides:  
 1) Full 90 degree worry free turning,  
 2) Eliminates the need for a slider hitch  
 3) Greatly enhances maneuverability  
[www.reeseprod.com](http://www.reeseprod.com) (Std.)

**E** Heated holding tanks with 12 volt heat pads secured to the bottom. No need to use the furnace to heat tanks when traveling. (Opt.)

**F** Solar panel prep (Std. All Models) The Zamp 40 amp. portable solar panel shown is sold separately.

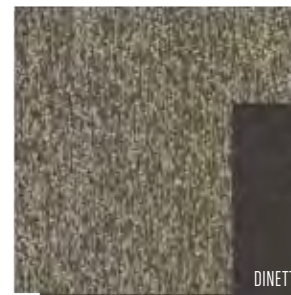
**G** 60" heated theatre seating. Fabric matched to decor.

**H** Swivel rocker, fabric to match (Per floorplan)

**I** Standard swivel recliner where applicable. Fabric to match decor.

**J** 67" Heated theatre seating per plan where available. Fabric matched to decor. (Per floorplan)

SOFA



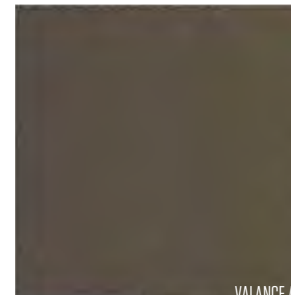
DINETTE CUSHIONS, VALANCE ARMS & ACCESSORIES

CURTAINS

### Boulder

PILLOWS, VALANCES, & DINETTE BACK INSERT

SOFA & DINETTE CUSHION LEATHER APPEARANCE



VALANCE ARMS & ACCESSORIES

CURTAINS

### Regal

SOFA LEATHER APPEARANCE, DINETTE BACK INSERT & VALANCE ARMS & ACCESSORIES

PILLOWS, VALANCE TOPS



DINETTE CUSHIONS

CURTAINS

### Spokane



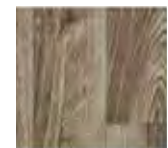
DRIFTWOOD DÉCOR STANDARD



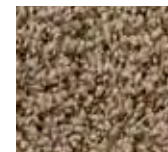
MAPLE DÉCOR OPTION



STANDARD FLOOR COVERING



OPTIONAL FLOOR COVERING



CARPET



FLAGSTAFF SUPER LITE SERIES

# Quality Construction

**JUST A FEW FEATURES THAT MAKE US GREAT.** Quality built trailers always bring the same results: long-lasting products you can depend on to enjoy with your family year after year. These are some of our highlights.



- 1 Glued and screwed wood cabinetry
- 2 Aluminum dinette frames for added strength and weight savings
- 3 Nitrogen filled tires for less air pressure fluctuation and a safer ride
- 4 Extra large dinette storage drawers and full extension metal drawer guides in the kitchen
- 5 Dexter Torflex Axles:
  - Independent wheel suspension and self-damping action
  - Rubber cushioning eliminates metal-to-metal contact.
  - Forged torsion arm for maximum strength

Models are also equipped with E-Z Lube® System and Nev-R-Adjust® Brakes.

- 6 Enclosed underbelly protects trailer components as well as increasing aerodynamics
- 7 Aluminum Frame Construction with high gloss fiberglass exterior and deluxe graphics



## ROOF CONSTRUCTION



Vacuum-bonded radius roof with vaulted ceiling providing superior insulation and more interior height.



4" thick roof with built in insulated A/C ducts

## FLOOR CONSTRUCTION



5/8" Tongue and Groove Plywood glued and screw to aluminum framing.

## WALL STRENGTH



Structurally engineered materials makes our vacuum-bonded walls some of the strongest in the industry.

## VACUUM-BONDED LAMINATED CONSTRUCTION



Flagstaff is one of only a few manufacturers with six sided aluminum framing. Vacuum bonded walls and roof to ensure a well-insulated, light weight, strong structural trailer.



# Standards & Options

MODELS	TT	FW	MODELS	TT	FW	MODELS	TT	FW
<b>STANDARD PACKAGES INCLUDE:</b>	Pkg. F	Pkg. E	Quick Recovery Auto Ignition Gas/Electric Water Heater	S	S	CSA	0	0
WiFi Ranger WiFi Booster	S	S	Black Tank Flush	S	S	Monitor Panel Switch Station	S	S
Reese Revolution Pin Box Hitch (Pkg. E Only)	--	S	Spare Tire Carrier and Cover	S	S	55 Amp Converter With Charger	S	S
Aluminum Bed and Dinette Base	S	S	Outside Grill	S	S	Battery Disconnect Switch	S	S
6 Sided Aluminum Cage Construction	S	S	Tinted Bonded Frameless Windows	S	S	Recessed Ceiling LED 12 Volt Interior Lighting	S	S
Vacuum Laminated 1 Piece Roof and Walls	S	S	Automotive Windshield (Pkg. F & E Where Applicable)	S*	--	Bedroom Mounted 24" LCD TV (Opt. All SL Models Except 23FBDS)	0*	0*
Enclosed Underbelly	S	S	Rear Observation Camera Prep w/ Molded Mounting Plate	S	S	32" LCD TV w/ Premium Soundbar	S	S
4 Frame Mounted Stabilizer Jacks (Pkg. F & E)	S	--	Solar Panel Prep	S	S	Digital AM/FM/CD/DVD w/ Remote	S	S
Power Landing Legs and Stabilizer Jacks (Pkg. E Only)	--	S				MP3 Player Hook-Up	S	S
Power Awning w/ Adjustable Rain Dump and LED Light Strip	S	S	<b>INTERIOR FEATURES</b>			Designer Valances w/ Lambrequin Arms	S	S
Torsion Axle, Rubber-Ryde Suspension	S	S	Driftwood Interior	S	S	Night Shades	S	--
Nitro Filled Radial Tires	S	S	Maple (w/ Solid Maple Glaze Finished Cabinet Doors) Interior	0	0	Day/Night Shades	0	S
Polished Alloy Wheels	S	S	Decorative Slide Out Fascia	S	S	Swivel Rocker Chair (Per floorplan)	S*	S*/0*
LED TV w/ Multi-directional Antenna	S	S	Solid Wood and Raised Panel Doors and Drawers	S	S	Swivel Rocker Recliners ILO Swivel Rockers (Per floorplan)	--	0*
Multi Zone Stereo w/ DVD/CD/AM/FM and Bluetooth Control	S	S	Screwed and Glued Wood Cabinetry	S	S	Swivel Rocker Recliners ILO Chaise Lounge (Opt. 29RKWS Only)	0*	--
Slam Latch Baggage Doors	S	S	Residential Full Extension Metal Drawer Guides	S	S	Heated Theater Seating w/ USB Ports (Per floorplan)	S*/0*	0*
Magnetic Door Holds	S	S	Engineered Mold and Mildew Resistant Floor Covering	S	S	Heated Theater Seating w/ USB Ports ILO Chaise Lounge (Opt. 29RKWS Only)	0*	--
Outside Speakers	S	S	Bedroom Carpet (N/A 23FBDS)	0	S	Deluxe Tri-Fold Sleeper Sofa (Per floorplan)	S*	S*
Maxxair® Ventilation Fan and Vent Cover	S	S	Floor Ducted Furnace	S	S	44" Family Dinette (Per floorplan)	S*	S*
13,500 BTU Ducted Roof A/C	S	S	15,000 BTU A/C	0	0	48" X 84" Spacious King-U-Style Dinette (Per floorplan)	S*	S*
Under Mount Double Bowl Kitchen Sink w/ Residential Style Faucet	S	S	2nd Roof A/C w/ Chill Chaser Heat Strip and 50 Amp Service (N/A 23FBDS only) and Digital Dual Thermostat Control	0*	0	Free Standing High Pressure Laminated Table with Swing Level Legs	S	S
Solid Surface Kitchen Countertops	S	S	50 Amp Service w/ 2nd A/C Prep (N/A 23FBDS)	0*	0	Free Standing Table and Chairs (Per floorplan)	0*	0*
Recessed 3 Burner Cooktop and Large Oven w/ Flush Mount Cover	S	S	Fireplace (Std. 27RKWS, 527BHWS, 528RKWS Opt. 27RLWS, 29KSWS, 29RKWS, 524RLBS, 526RLWS, 526KSWS)	S*/0*	S*/0*	Stainless Steel Appliances	0	0
Roller Bearing Drawer Guides	S	S	Carbon Monoxide Detector	S	S	Raised Refrigerator Panels	0	0
Microwave Oven	S	S	12 Volt Power Plug Hook-up	S	S	Residential One-Piece Sink Cover	S	S
Double Door Auto Gas/Elec. Large Refrigerator	S	S						
Serta Innerspring Mattress	S	S						

STANDARDS & OPTIONS ARE SUBJECT TO CHANGE.



## MODELS

	TT	FW
Cutting Board	S	S
Counter Top Extension (Per floorplan)	S	S
Water-Pur Filtration System	S	S
Tub Surround	S	S
Radius Glass Door Shower	S*	S*
Large Shower w/ Sliding Glass Door (Std. 26RBWS, 27BHWS)	S*	--
Bathroom Skylight	S	S
Water Heater By-Pass Kit	S	S
Foot Flush Toilets	S	S
Extra Maxxair® Ventilation Fan and Vent Cover	O	O
Murphy Bed w/ Under Sofa Storage System and Outside Access for Unmatched Floor Plan Flexibility (Std. 23FBDS)	S*	--

## EXTERIOR FEATURES

Fully Aluminum Frame (Floor, Sidewall, & Roof)	S	S
Insulation Factors R-7 Side Wall, R-12 Floor and R-14 Ceiling	S	S
Radius Roofs w/ Interior Vaulted Ceilings	S	S
Vinyl / Rubber Composite Roofing Membrane	S	S
T V Antenna w/ Cable & Satellite Hook-Up	S	S
Rear Observation Camera Prep w/ Molded Mounting Plate	S	S
Laminated Oyster Colored Fiberglass Sidewalls	O	O
Laminated Fiberglass Sidewalls	S	S
Distinctive Black Exterior Trim	S	S
Electric Slide-Out (All Slide Out Models)	S	S
Decorative Frame Skirting	S	S
Rear Ladder	O	S
Bike Rack Ladder Attachment	O	O

## MODELS

	TT	FW
Awning Slide Topper	O	O
Tongue mount bike rack	O	--
30" Primary Entrance/Screen Door	S	S
Friction Hinge Entrance Door	S	S
Large Assist Grab Handles	S	S
Lighted Entry Step and Scare Light	S	S
Radius Corner Windows and Doors	S	S
Thermopane Windows	O	O
Large Dinette Picture Window	S	S
Outside Shower	S	S
1/2 Sliding Storage Tray (N/A 23FBDS, 26RLWS)	O*	--
Outside Antifreeze Stations	S	S
Front Outside "Trunk" Storage Separated From Heated		
Pass Thru Storage Compartments	--	S
Two-30 Lb Gas Bottles	S	S
Enclosed Gas Bottles w/ Storage Door Access	--	S
Molded Bottle Cover	S	--
Surface Coated Steel I-Beam Frame	S	S
Reese Revolution Hitch	--	S
Power Front Landing Jacks	--	S
Power Tongue Jack	O	--
Power Stabilizer Jacks (Fifth Wheels: Rear Jacks only)	O	O
Easy Lube Axles and Nev-R Adjust Brakes	S	S
Triple Entry Step	S	S
Electronically Controlled Heated Holding Tanks	O	S

TT = SUPER LITE TRAVEL TRAILER, FW = SUPER LITE FIFTH WHEEL

S = STANDARD, O = OPTIONAL, -- NOT AVAILABLE, \* = SELECTED MODELS



**FREE MEMBERSHIP**  
to Forest River Owners' Group

www.forestriverfrog.com



CUSTOMER SATISFACTION



www.ForestRiverBuyLocal.com



**PRE-DELIVERY INSPECTION FACILITY**

20,000 square feet of quality assurance. The bare essentials for a premium product. This state-of-the-art facility gives immediate daily feedback to production for quality assurance in every unit built.

**24/7 EMERGENCY ROADSIDE ASSISTANCE**

For a worry-free ownership experience

Forest River includes one year of Coach-Net RV Technical & Roadside Assistance with each RV purchase. Whether new to the RV lifestyle or an experienced RV enthusiast, Forest River owners have 24/7 access to technical, operational and emergency road service coverage throughout the US & Canada. Coach-Net's fast, dependable service is just a phone call away.

**Coach-Net**<sup>®</sup>  
RV Technical & Roadside Assistance

LOOK FOR OUR OTHER POPULAR LINES OF FLAGSTAFF CAMPING TRAILERS.



Flagstaff E-Pro Travel Trailers



Flagstaff Tent Campers



Flagstaff Super Lite Travel Trailers & Fifth Wheels



Flagstaff V-Lite, Classic Super Lite Travel Trailers & Fifth Wheels

**Specification Definitions**

**GVWR (Gross Vehicle Weight Rating)** - is the maximum permissible weight of the unit when fully loaded. It includes all weights, inclusive of all fluids, cargo, optional equipment and accessories. For safety and product performance do NOT exceed the GVWR.

**GAWR (Gross Axle Weight Rating)** - is the maximum permissible weight, including cargo, fluids, optional equipment and accessories that can be safely supported by a combination of all axles.

**UVW (Unloaded Vehicle Weight)\*** - is the typical weight of the unit as manufactured at the factory. It includes all weight at the unit's axle(s) and tongue or pin and LP Gas. The UVW does not include cargo, fresh potable water, additional optional equipment or dealer installed accessories.

\*Estimated average based on standard build optional equipment.

**CCC (Cargo Carrying Capacity)\*\*** - is the amount of weight available for fresh potable water, cargo, additional optional equipment and accessories. CCC is equal to GVWR minus UVW. Available CCC should accommodate fresh potable water (8.3 lbs per gallon). Before filling the fresh water tank, empty the black and gray tanks to provide for more cargo capacity.

\*\*Estimated average based on standard build optional equipment

Each Forest River RV is weighed at the manufacturing facility prior to shipping. A label identifying the unloaded vehicle weight of the actual unit and the cargo carrying capacity is applied to every Forest River RV prior to leaving our facilities.

The load capacity of your unit is designated by weight, not by volume, so you cannot necessarily use all available space when loading your unit.

FLAGSTAFF

# Warranty

**FOR DETAILS ON FLAGSTAFF'S COMPLETE WARRANTY PROGRAM, SEE YOUR FLAGSTAFF DEALER.** When it comes to backing products with the same quality and commitment it does when it begins the manufacturing process, the only name you have to remember when you're looking for a recreational vehicle is Flagstaff. Flagstaff offers the following additional limited warranties to the original purchasers. Consult written warranty for details.

1. Twelve-year vinyl roof warranty,
2. Two-year fiberglass warranty,
3. Ten-year Torflex<sup>®</sup> axle warranty,
4. One-year bumper to bumper warranty



**Learn More**  
Scan this barcode using a QR Reader on your smart phone to learn more about Forest River.



A Berkshire Hathaway company.

201 WEST ELM MILLERSBURG, IN 46543 WWW.FORESTRIVERINC.COM/FLAGSTAFF 574.642.2640

YOUR FLAGSTAFF DEALER

All information contained in this brochure is believed to be accurate at the time of publication. However, during the model year, it may be necessary to make revisions and Forest River, Inc., reserves the right to make all such changes without notice, including prices, colors, materials, equipment and specifications as well as the addition of new models and the discontinuance of models shown in this brochure. Therefore, please consult with your Forest River dealer and confirm the existence of any materials, design or specifications that are material to your purchase decision. Litho. U.S.A. FOR 1478 P&W: 2017.10.13