

PIONEERING VALUE WITHOUT COMPROMISE

FOREST RIVER
Hyper-Lyte
Heritage Glen



TRAVEL TRAILERS AND FIFTH WHEELS



24RKHL

Hyper-Lyte
TRAVEL TRAILERS



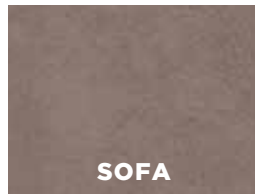
24RKHL BACK TO FRONT



MILAN
DECOR



PILLOWS



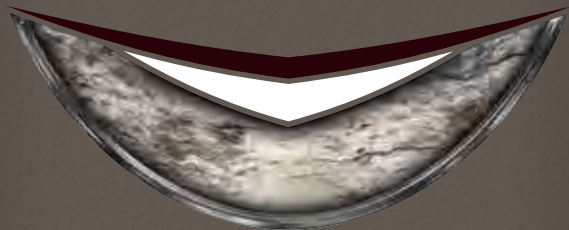
SOFA



DINETTE



FOREST RIVER
Hyper-Lyte
Heritage Glen



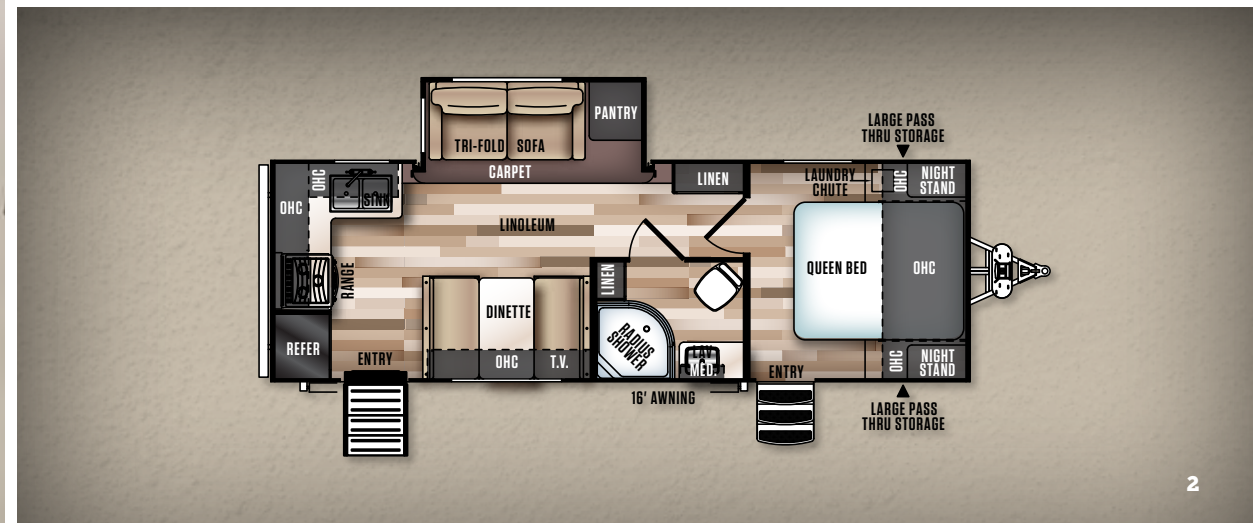


24RKHL BEDROOM



24RKHL KITCHEN AREA
(SHOWN WITH OPTIONAL RESIDENTIAL REFER)

24RKHL FLOORPLAN



29RLSHL

Hyper-Lyte
FIFTH WHEELS



SIENNA
DECOR



PILLOWS



SOFA



DINETTE

FOREST RIVER
Hyper-Lyte
Heritage Glen



29RLSHL FRONT TO BACK
(SHOWN WITH OPTIONAL RESIDENTIAL REFER)



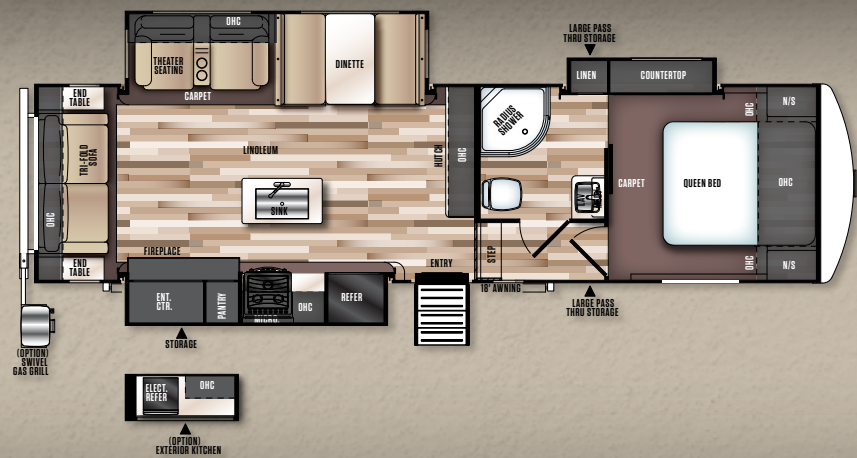
29RLSHL BACK TO FRONT
(SHOWN WITH OPTIONAL FREE STANDING DINETTE)



29RLSHL BEDROOM



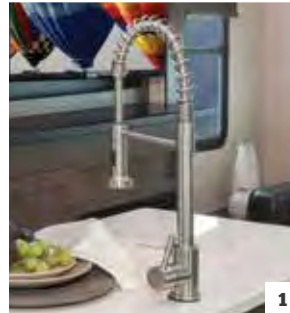
29RLSHL FLOORPLAN



TOP 15 Hyper-Lyte FEATURES



- 1 HIGH RISE FAUCET WITH PULLOUT SPRAYER
- 2 30" RADIUS MAIN ENTRY DOOR
- 3 JUMBO BOOTH DINETTE WITH PLYWOOD CORE TOP (SELECT MODELS)
- 4 LOAD-N-GO COLLAPSIBLE STORAGE BINS (SELECT MODELS)
- 5 CONVENIENT LAUNDRY CHUTE DIRECTLY TO PASS THRU STORAGE
- 6 MODERN ROLLER SHADES WITH DECORATIVE VALANCE
- 7 TINTED SAFETY GLASS WINDOWS
- 8 TRI-FOLD, E-Z SET UP SLEEPER SOFA
- 9 PAINTED GEL COAT FIBERGLASS FRONT CAP WITH LIGHT STRIPS ON FIFTH WHEELS, WON'T FADE, CHALK OR CRACK
- 10 HIDDEN HINGES ON CABINET DOORS
- 11 WIDE TRACK SUSPENSION WITH ALUMINUM RIMS (TRAVEL TRAILERS ONLY)
- 12 DOCKING STATION WITH QUICK WINTERIZATION FEATURE (FIFTH WHEELS ONLY)
- 13 BLUE LED LIGHTED MARINE GRADE EXTERIOR SPEAKERS
- 14 ONE TOUCH ELECTRIC AWNING WITH "QUICK PITCH"
- 15 SLAM LATCH BAGGAGE DOORS WITH MAGNETIC CATCHES



1



2



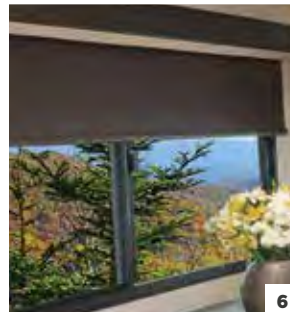
3



4



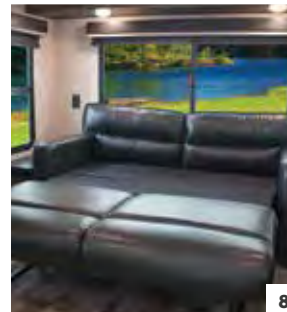
5



6



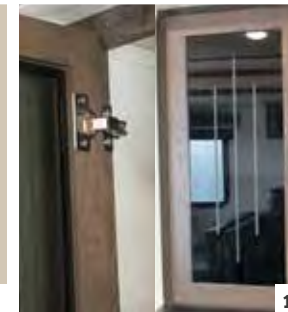
7



8



9



10



11



12



13



14



15



LIMITED EDITION PACKAGE FEATURES

- 1 GREEN PACKAGE:
FURRION SOLAR PANEL
PREP WITH LED LIGHTS
AND LED AWNING LIGHTS
- 2 FURRION CD/DVD/FM/
USB PLAYER WITH
BLUETOOTH
- 3 HIGH RISE FAUCET WITH
PULL OUT SPRAYER
- 4 PUSH BUTTON REMOTE
OPERATES: AWNING,
SLIDES, LED AWNING
LIGHTS, POWER STAB
JACKS
- 5 RECESSED STOVE WITH
GLASS STOVE COVER
- 6 FURRION BACK UP
CAMERA PREP
- 7 POWER TONGUE JACK
AND POWERSTAB JACK
POWER TONGUE JACK IS NOT
INCLUDED ON 5TH WHEELS
- 8 SOLID-STEP,
ALUMINUM
ENTRY STEPS
(MAIN ENTRY)
- 9 DENVER MATTRESS



1



2



3



4



5



6

FOREST RIVER
Hyper-Lyte
Heritage Glen



7



8



9





CONSTRUCTION

- A** Aluminum triple entry steps
- B** Radial tires
- C** Tinted safety glass windows
- D** Dexter axles
- E** Heated and enclosed underbelly
- F** Laminated vacuum bonded aluminum sidewalls
- G** I-Beam powder-coated frame with cambered chassis
- H** Laminated aluminum structure floor w/ block foam insulation
- I** Residential stain resistant carpet
- J** High density block foam insulation
- K** Power front jack (travel trailers only)
- L** Under-floor ducted heat
- M** Ducted 13.5 K BTU high output air conditioning
- N** One piece seamless roof (12 yr. warranty)



- O** Roof decking
- P** R-14 fiberglass insulation in ceiling, front cap & rear wall
- Q** Standard insulated duct for central air (all models)
- R** Gel coated fiberglass exterior
- S** High definition graphics
- T** ABS dual tank cover
- U** Finished storage area



EXCELLENT CRAFTSMANSHIP

Only the finest attention to detail goes into each Heritage Glen. Our skilled craftsmen have many years of experience building beautifully finished cabinetry. The solid nature of our well designed woodwork is another reason why Heritage Glen is the best built RV on the road.

STANDARDS + OPTIONS

HERITAGE GLEN CONSTRUCTION/ EXTERIOR FEATURES

- Dexter Axles w/ 15" Radial Tires & Aluminum Wheels
- Aerodynamic Fiberglass Front End
- Wide Track Suspension (Travel Trailers only)
- 4 Sided Aluminum-Framed Vacuum-Bonded Construction
- Gel Coated Fiberglass Exterior
- Laminated Sidewalls
- Laminated Floor w/ In-Floor Heat
- Solid Step Aluminum Entry Steps (Main Entry Door)
- 30" Smooth Fiberglass Radius Main Entry Door w/ Tinted Window and Shade Prep (26" Secondary)
- Swing Arm Entry Assist Handle
- Extra Large Full Pass-Thru Storage (per floorplan)
- One Touch Electric Awning w/ Adjustable Legs (1 year warranty)
- Marine Grade Exterior Speakers w/Blue LED Light
- Exterior TV Bracket w/Cable and Power Outlet
- Upgraded ABS Fender Skirts
- Interior Grab Handle at Entry Door
- Powder Coated I-Beam Frame
- Cambered Chassis
- Water Heater By-Pass
- Norco Cable Slide Out Systems

- 16 Gal. per hour G/E Quick Recovery DSI Water Heater (2 year warranty)
- Stabilizer Jacks
- One Piece Seamless Roof (12 Year Warranty)
- Tinted Safety Glass Windows
- Black Tank Flush

KITCHEN

- Dometic® Double Door Refrigerator (2 Year Warranty)
- Residential, Double Bowl Sink
- Bamboo Cutting Board/ Sink Cover
- Microwave w/ Carousel (1 Year Warranty)
- High Rise, Pull-Out Sprayer Faucet
- Vented Range Hood w/ Light
- Beauflor® Plank Wood Linoleum
- Solid Wood Drawer Fronts w/ Full Extension Ball Bearing Guides
- Solid Wood Raised Upper Panel Doors
- Large Overhead Cabinets (per Floor Plan)
- Wall-Mounted Systems Monitor Panel
- Satin Nickel Hardware

LIVING ROOM

- Satin Nickel Hardware
- 13,500 BTU Ducted Roof Air Conditioner w/ Quick Cool (2 Year Warranty)
- Residential Stain Resistant Carpet

- Recliners (Per Floorplan)
- Residential Roller Shades with Decorative Valance
- Deluxe Dinette Tabletop
- Solid Wood Drawer Fronts
- Extra Large 74" Jumbo Dinette (Per Floorplan)
- Large Dinette Picture Window
- Winegard® TV Antenna
- Cable TV and Satellite Prep
- Decorative Dinette Light
- 30k BTU Suburban Forced Air DSI Furnace (2 Year Warranty) w/ Digital Thermostat
- Under Floor Heat Ducting
- Tri-Fold Hide-a-Bed Sofa w/ Storage and X-Large Throw Pillows (Most Models)
- Laundry Hamper (Most Models)
- 32" HD TV and CD/DVD/AM/FM w/ MP3 Hookup and Surround Sound

BEDROOM

- Denver Mattress (60" X 74")
- Strut Lifted Storage Area Under Bed
- Huge Storage Drawers in Travel Trailer Bed Base (Most Models)
- Load-N-Go Collapsible Storage Bins Under Bed Base (Most Models)
- Oversized Bunks (Per Floorplan)
- Solid Bedroom Privacy Doors
- Mirrored Wardrobes w/ Two Nightstands and Outlets (Most Models)

BATHROOM

- 12-Volt Power Bath Roof Exhaust Vent

- Huge Residential Shower w/ Glass Door Surround (Most Models)
- Wooden Medicine Cabinet w/ Mirrored Door
- Dometic® Foot Flush Toilet
- Vinyl Tub Surround

SECURITY AND SAFETY

- LP Leak Detector
- Smoke Detector
- Carbon Monoxide Detector
- Fire Extinguisher
- Welded Heavy Duty Safety Chains (Travel Trailers)
- Electric Brakes (all wheels)
- GFI Receptacles
- ANSI 119.2
- Certified to Meet National Highway Traffic Safety Administration Specifications

HYPER-LYTE OPTIONS

- Free-Standing Dinette w/ 4 Chairs
- 10.7 cu. ft. Residential Refrigerator w/ Inverter (All Models)
- 15,000 BTU Ducted A/C w/ Quick Cool
- Outside Shower
- White Gel Coat Fiberglass Front Cap
- Extreme Weather Package (Calc. @ R38 Floor, Front Cap and Roof)
- Exterior Kitchen/Bar

Contact your Heritage Glen dealer for a complete list of options.

DECOR OPTIONS

SIENNA

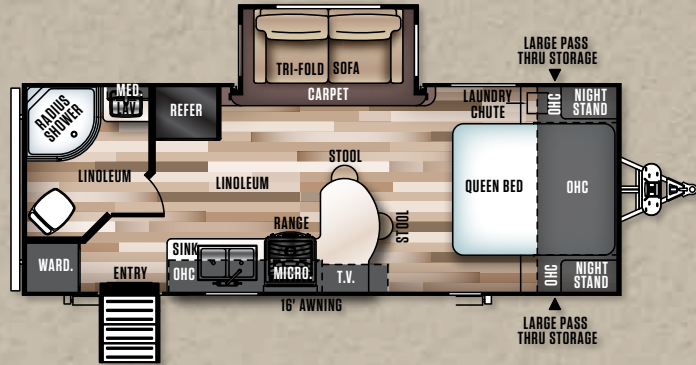
MILAN



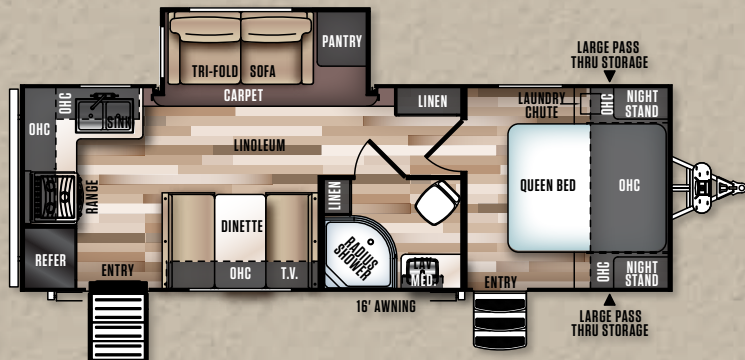
PREPARED FOR THE SEASONS

- HEATED AND ENCLOSED UNDERBELLY WITH UNDER FLOOR DUCTED HEATING
- HIGH DENSITY, BLOCK FOAM INSULATION (SIDEWALL AND FLOOR)
- DOUBLE LAYERED FIBERGLASS INSULATION (ROOF, FRONT AND REAR WALL)
- HIGH EFFICIENCY AIR CONDITIONING SYSTEM WITH THICK, INSULATED DUCTING

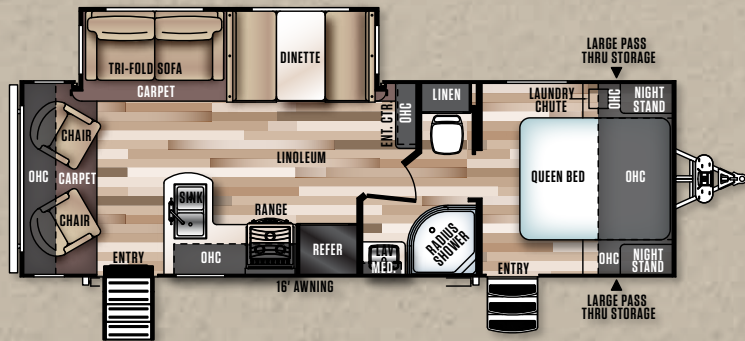
TRAVEL TRAILER FLOORPLANS



23RBHL UVW: 4768



24RKHL UVW: 5363



26RLHL UVW: 5728



24BHHL UVW: 5118

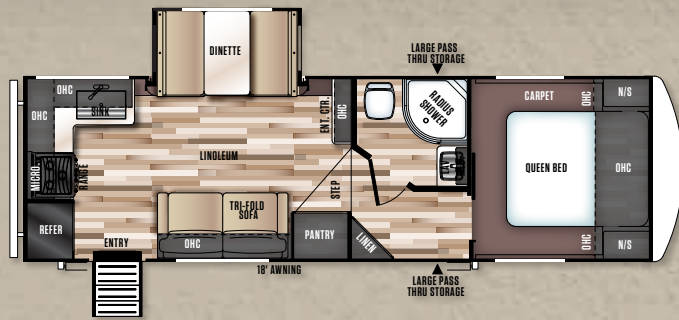


26BHKHL UVW: 6533



29BHHL UVW: 6273

FIFTH WHEEL FLOORPLANS



25RKSHL UVW: 6939



28BHHL UVW: 7915



29RLSHL UVW: 8649

TRAVEL TRAILERS

FIFTH WHEELS

MODEL	23RBHL	24BHHL	24RKHL	26BHKHL	26RLHL	29BHHL	25RKSHL	28BHHL	29RLSHL
HITCH HEIGHT (LBS)	520	510	585	714	625	645	1307	1552	1632
AXLE WEIGHT	4210	4570	4740	5781	5065	5590	5573	6304	6958
UVW	4768	5118	5363	6533	5728	6273	6939	7915	8649
CCC (cargo cap)	2752	2392	2222	2981	1897	3172	3061	2597	1943
EXT LENGTH	25' 11"	27' 0"	28' 7"	34' 10"	30' 1"	32' 7"	29' 6"	34' 0"	33' 10"
EXT HEIGHT	10' 10"	10' 10"	10' 10"	10' 8"	10' 10"	10' 11"	11' 10"	12' 6"	12' 1"
FRESH WATER CAP (gal)*	49	49	49	48	49	48	48	48	48
BLACK WATER CAP (gal)	32	32	32	27	32	27	30	27	30
GREY WATER CAP (gal)	32	32	64	64	32	54	57	54	62
TIRE SIZE (in)	15"	15"	15"	15"	15"	15"	15"	15"	15"
AWNING SIZE (ft)	16'	18'	16'	19'	16'	16'	18'	18'	18'

SPECIFICATIONS

FOREST RIVER
Hyper-Lyte
Heritage Glen



See back cover for more information on weights. *Includes hot water heater

GVWR (Gross Vehicle Weight Rating) - is the maximum permissible weight of the unit when fully loaded. It includes all weights, inclusive of all fluids, cargo, optional equipment and accessories. For safety and product performance do NOT exceed the GVWR.

GAWR (Gross Axle Weight Rating) - is the maximum permissible weight, including cargo, fluids, optional equipment and accessories that can be safely supported by a combination of all axles.

UVW (Unloaded Vehicle Weight)* - is the typical weight of the unit as manufactured at the factory. It includes all weight at the unit's axle(s) and tongue or pin and LP Gas. The UVW does not include cargo, fresh potable water, additional optional equipment or dealer installed accessories.

*Estimated Average based on standard build optional equipment.

CCC (Cargo Carrying Capacity)** - is the amount of weight available for fresh potable water, cargo, additional optional equipment and accessories. CCC is equal to GVWR minus UVW. Available CCC should accommodate fresh potable water (8.3 lbs per gallon). Before filling the fresh water tank, empty the black and gray tanks to provide for more cargo capacity.

** Estimated average based on standard build optional equipment

Each Forest River RV is weighed at the manufacturing facility prior to shipping. A label identifying the unloaded vehicle weight of the actual unit and the cargo carrying capacity is applied to every Forest River RV prior to leaving our facilities.

The load capacity of your unit is designated by weight, not by volume, so you cannot necessarily use all available space when loading your unit.

All information contained in this brochure is believed to be accurate at the time of publication. However, during the model year, it may be necessary to make revisions and Forest River, Inc., reserves the right to make all such changes without notice, including prices, colors, materials, equipment and specifications as well as the addition of new models and the discontinuance of models shown in this brochure. Therefore, please consult with your Forest River dealer and confirm the existence of any materials, design or specifications that are material to your purchase decision.



PRE-DELIVERY INSPECTION FACILITY
20,000 square feet of quality assurance. The bare essentials for a premium product. This state-of-the-art facility gives immediate daily feedback to production for quality assurance in every unit built.

24/7 EMERGENCY ROADSIDE ASSISTANCE

For a worry-free ownership experience Forest River includes one year of Coach-Net RV Technical & Roadside Assistance with each RV purchase. Whether new to the RV lifestyle or an experienced RV enthusiast, Forest River owners have 24/7 access to technical, operational and emergency road service coverage throughout the US & Canada. Coach-Net's fast, dependable service is just a phone call away.

Coach-Net®
RV Technical & Roadside Assistance

FREE MEMBERSHIP
to Forest River Owners' Group

www.forestriverfrog.com



FOREST RIVER
Heritage Glen
Hyper-Lyte

CUSTOMER SATISFACTION

FOREST RIVER
encourages you to

BUY LOCAL

PREFERENTIAL SERVICE

PRODUCT INFORMATION

www.ForestRiverBuyLocal.com

YOUR LOCAL HERITAGE GLEN DEALER



Learn More
Scan this barcode using a QR Reader on your smart phone to learn more about Forest River.



A Berkshire Hathaway company.

Forest River, Inc.
55470 C.R. 1, Elkhart, IN 46515
(574) 389-4600
www.forestriverinc.com/heritageglen
www.forestriveraccessories.com