

# ROCKWOOD ULTRA LITES

ROCKWOOD  
PROVIDING OUTDOOR FUN SINCE  
1974



ROCKWOOD ULTRA LITES



TRAVEL TRAILERS  
FIFTH WHEELS



# Over 40 Years of Excellence

**FROM HUMBLE BEGINNINGS, ROCKWOOD HAS EMERGED AS AN INDUSTRY LEADER IN THE MANUFACTURING OF LIGHT WEIGHT TRAVEL TRAILERS, FIFTH WHEELS AND CAMPING TRAILERS.**

Located in Millersburg, IN since 1974, Rockwood has supported this community with quality employment and in turn, the local residents have provided Rockwood with a workforce second to none. Their commitment and work ethic continue to be a major contribution to our company's success. Founded on the principal of providing exceptional value and service, Rockwood has become the ultimate luxury product in the light weight trailer market. Quality, features and style with floor plans that appeal to the majority of consumers.





**TODAY, ROCKWOOD REMAINS COMMITTED TO INSURING THAT OUR CUSTOMERS ENJOY THEIR CAMPING EXPERIENCES.**

Through the utilization of our experienced work force, a “state of the art” lamination facility, modern production plants and detailed assembly processes our aim is to continue to provide our customers with the best built product possible at an unmatched value.



**THE TRADITIONAL ROCKWOOD ULTRA LITE TRAVEL TRAILERS AND FIFTH WHEELS CONTINUE TO PROVIDE UNSURPASSED VALUE AND COMFORT.**

The spacious interiors offer numerous windows, 80" vaulted ceiling and ducted air conditioning with directional venting. Also included are solid surface kitchen counter tops with an under mount stainless steel two bowl sink. The cabinet doors and drawers are solid wood with a rich driftwood finish or the optional maple with a rich but lighter stained finish. Like to cook... we offer a larger oven with a glass fold down top that doubles as counter top space. Value you won't find in comparable products.



**Standard White Exterior**

Featuring an aluminum framed with vacuum bonded construction, high gloss fiberglass exterior and deluxe graphics, our Ultra Lites are among the best constructed, most well insulated trailers available on the market today.



**Optional Champagne Exterior**

Rockwood travel trailer models are loaded with features like polished alloy wheels and Nitro filled tires radial tires mounted to Dexter Torflex torsion axles for a smooth, safe ride. Also an enclosed underbelly to keep the underside of your trailer clean and protected from many of the road hazards along the way. Rockwood also made standard frameless bonded windows and an automotive front windshield (when applicable) to give you the great look you would expect from Rockwood.





MODEL NO. | INTERIOR COLORS

**2902WS**

INDIGO / DRIFTWOOD



## AN UPGRADE FROM YOUR STANDARD TRAILER.



To continue this tradition, Rockwood offers a group of appealing features to enhance your camping experience. Features like our 13,500 BTU ducted roof AC, a power awning with LED strip lighting and an adjustable rain dump, a quick recovery auto ignition gas / electric water heater, a built in microwave and a outside BBQ grill make camping comfortable and easy. With all these features, and plenty more, Rockwood still remains a light-weight, 1/2 ton towable camper.



MODEL NO. | INTERIOR COLORS

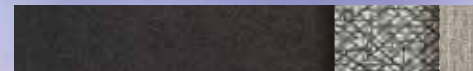
**2902WS**

INDIGO / DRIFTWOOD



# Travel Trailers

**THE FLOOR PLAN YOU WANT IN THE SIZE YOU NEED.** We have custom designed our trailers with the best in style and amenities while keeping your towing needs in mind. Quality craftsmanship and attention to detail have been put into our Ultra Lite trailers, all with you in mind. The fully equipped kitchens with comfortable dinettes and distinctive, spacious interiors are just a couple notable features.

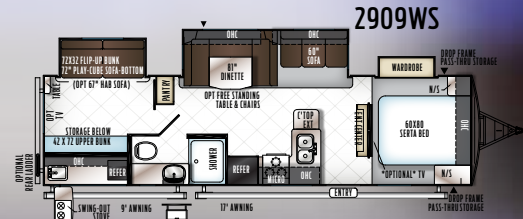
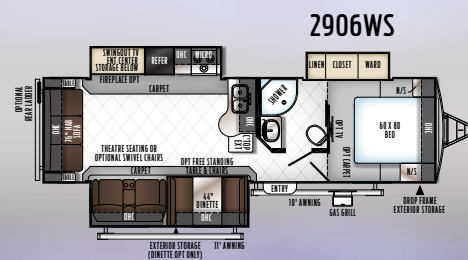
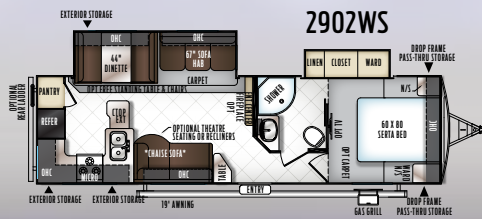
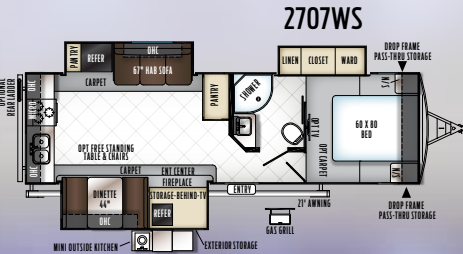
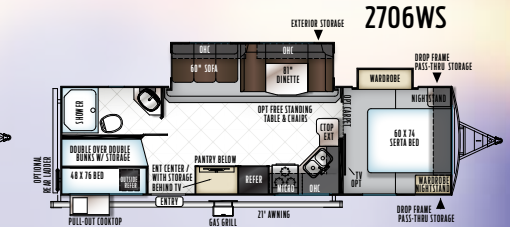
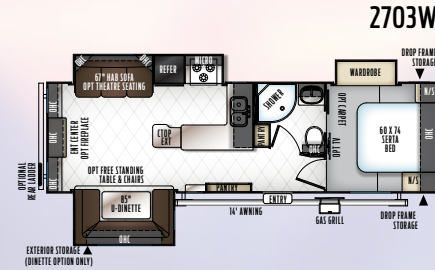
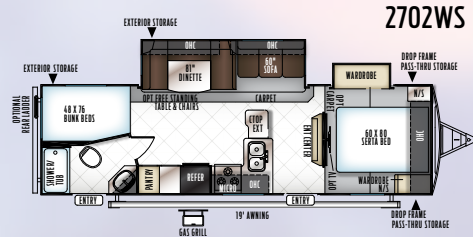
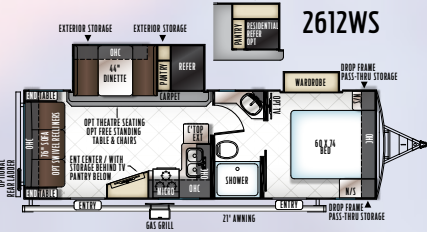
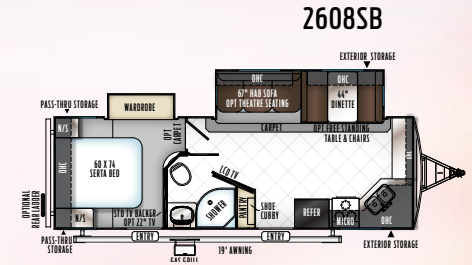
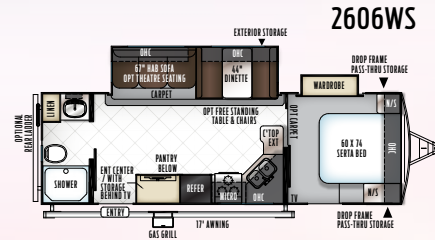
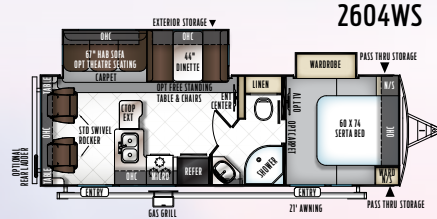
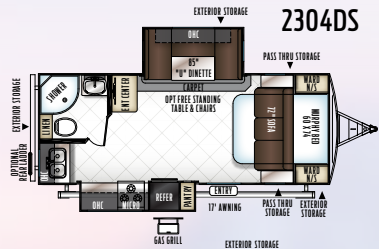


**2606WS**  
GRAPHITE / MAPLE



Standard White Exterior

## FLOORPLANS & SPECIFICATIONS



MODEL NUMBER	2304DS	2604WS	2606WS	2608SB	2612WS	2702WS	2703WS	2706WS	2707WS	2902WS	2906WS	2909WS
Unloaded Vehicle Weight*	5598	6335	6036	6323	6133	6504	6842	6646	7077	6929	7275	7491
Base Dry Hitch Weight	660	796	864	832	908	900	854	804	706	764	914	914
Base Dry Axle Weight	4879	5480	5113	5432	5166	5545	5929	5783	6312	6106	6302	6518
Cargo Capacity	2062	1461	1828	1509	1775	1436	2012	2158	1629	1835	1639	1423
Length (Hitch to Bumper)	25' 1"	29' 9"	29' 9"	29' 11"	29' 9"	32' 3"	32' 3"	32' 10"	32' 3"	33' 9"	33' 11"	34' 11"
Width	96"	96"	96"	96"	96"	96"	96"	96"	96"	96"	96"	96"
Height (w/ AC)	134"	134"	134"	134"	134"	134"	134"	134"	134"	134"	134"	134"
Fresh Water Capacity	43 gal	43 gal	43 gal	43 gal	43 gal	43 gal	43 gal	43 gal	43 gal	43 gal	43 gal	43 gal
Gray Water Capacity	45 gal	45 gal	45 gal	90 gal	45 gal	45 gal	45 gal	90 gal	90 gal	90 gal	45 gal	45 gal
Black Water Capacity	45 gal	45 gal	45 gal	45 gal	45 gal	45 gal	45 gal	45 gal	45 gal	45 gal	45 gal	45 gal

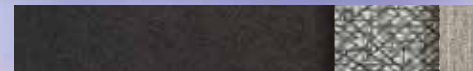
The Unloaded Vehicle Weight (UVW) listed represents the weight of one trailer with that model's standard equipment including the content of specified option packages.

\* See back cover for further specification definitions.



# Fifth Wheels

**LIGHTEN YOUR LOAD AND RELAX IN COMFORT.** The Rockwood Ultra Lite Fifth Wheel models provide excellent light weight alternatives for owners of 1/2 ton pick up trucks. Equipped with a standard Reese Revolution Hitch, you can tow with almost any size truck bed. Our Ultra Lite fifth wheels have been custom designed with the best in styling and amenities while keeping your towing needs in mind.



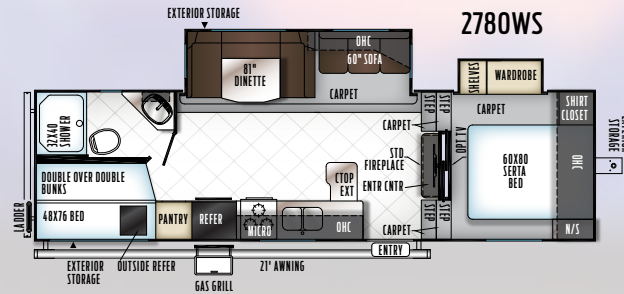
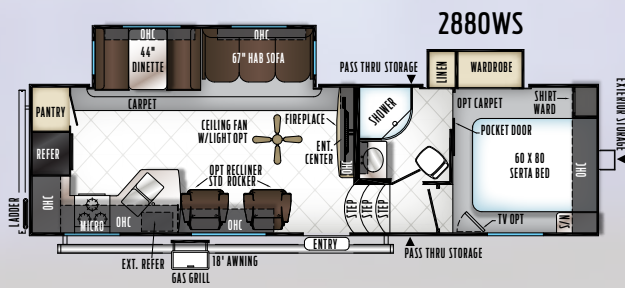
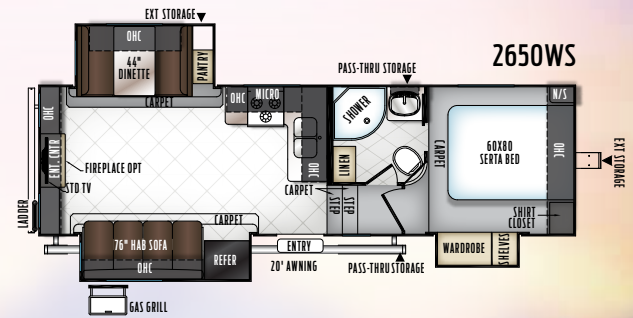
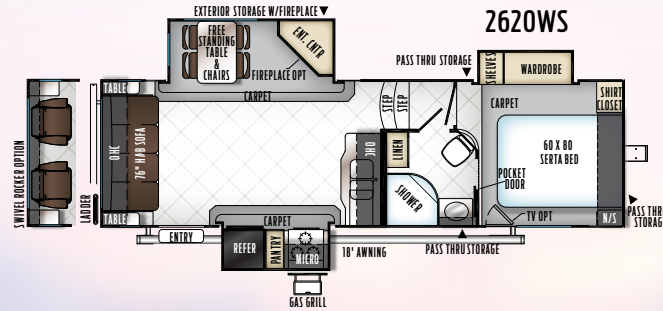
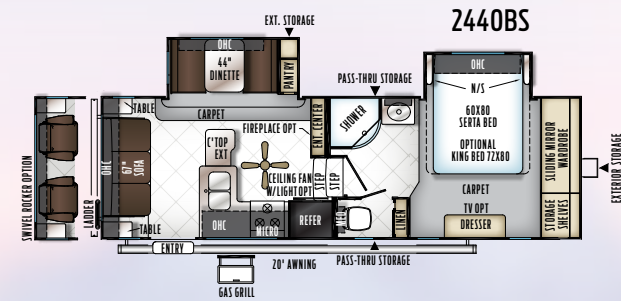
**2780WS**  
GRAPHITE / DRIFTWOOD



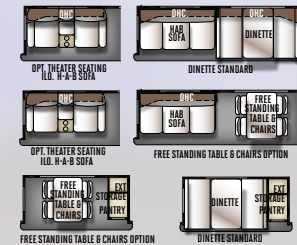
Standard White Exterior



## FLOORPLANS & SPECIFICATIONS



### ULTRA SLIDE OPTIONS



**2650WS**  
MOCHA / MAPLE



MODEL NUMBER	2440BS	2650WS	2620WS	2780WS	2880WS
Unloaded Vehicle Weight*	7226	7631	7501	7330	8127
Base Dry Hitch Weight	1080	1263	1450	1374	1235
Base Dry Axle Weight	6087	6309	5992	5897	6833
Cargo Capacity	1854	1632	1949	2044	1708
Length (Hitch to Bumper)	28' 2"	29' 8"	29' 8"	31' 1"	31' 11"
Width	96"	96"	96"	96"	96"
Height (w/ AC)	153"	153"	153"	153"	153"
Fresh Water Capacity	43 gal	43 gal	43 gal	43 gal	43 gal
Gray Water Capacity	45 gal	45 gal	45 gal	82 gal	90 gal
Black Water Capacity	45 gal	45 gal	45 gal	45 gal	45 gal

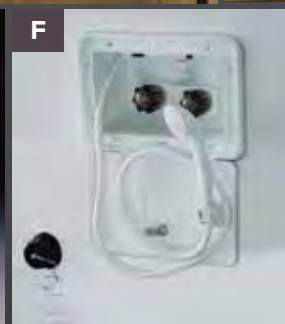
The Unloaded Vehicle Weight (UVW) listed represents the weight of one trailer with that model's standard equipment including the content of specified option packages. \* See back cover for further specification definitions.

# Popular Features

**FEATURES THAT MAKE YOUR TRIPS FEEL LIKE HOME.** Rockwood takes careful consideration to each feature added into each product produced. Every detail is considered ranging from extra sleeping room, storage, comfort and convenience. Take time to review the features listed below and match them with the competition's products. We're confident you'll discover Rockwood is the superior choice.



Standard White Exterior



- A Power Awning with adjustable rain dump and LED lighting (Std.)
- B 32" LCD TV and entertainment center with "Bluetooth" technology.
- C Radius glass door shower (N/A Models with tub bases)
- D Solid surface counter top with under mount sink
- E Water Filtration System (Std. Opt.)
- F Outside Shower (Std.)
- G Deluxe tri-fold sleeper sofa w/ comfortable, easy set-up queen bed (Per floorplan)



**A** Rear camera prep. (Std. all models) The Furion observation camera system with digital wireless technology is sold separately.

**B** Forest River switch center (Std.)

**C** WiFi Ranger WiFi Booster, boosting your WiFi with a secure signal (Std.)

**D** The Reese Revolution pin box provides:  
 1) Full 90 degree worry free turning,  
 2) Eliminates the need for a slider hitch  
 3) Greatly enhances maneuverability  
[www.reeseprod.com](http://www.reeseprod.com) (Std.)

**E** Heated holding tanks with 12 volt heat pads secured to the bottom. No need to use the furnace to heat tanks when traveling. (Opt.)

**F** Solar panel prep (Std. All Models) The Zamp 40 amp. portable solar panel shown is sold separately.

**G** 60" heated theatre seating. Fabric matched to decor.

**H** Swivel rocker, fabric to match (Per floorplan)

**I** Standard swivel recliner where applicable. Fabric to match decor.

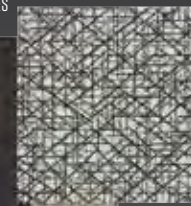
**J** 67" Heated theatre seating per plan where available. Fabric matched to decor. (Per floorplan)

SOFA & CHAIR LEATHER APPEARANCE, DINETTE CUSHIONS, VALANCE ARMS & ACCESSORIES



**GRAPHITE**

VALANCE TOP & DINETTE INSERT



CURTAINS

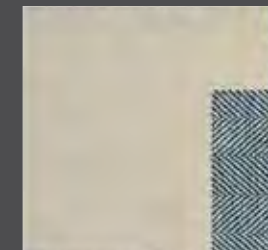


**DRIFTWOOD DÉCOR STANDARD**



**MAPLE DÉCOR OPTION**

SOFA LEATHER APPEARANCE



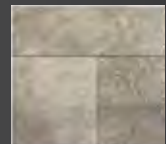
**INDIGO**

VALANCE TOP, PILLOWS & DINETTE INSERT



CURTAINS

VALANCE ARMS, DINETTE SEATS, CHAIRS & ACCESSORIES

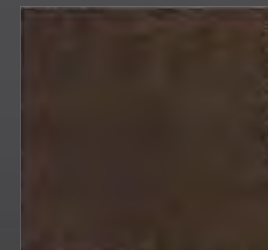


**STANDARD FLOOR COVERING**



**OPTIONAL FLOOR COVERING**

SOFA & CHAIR CLOTH, DINETTE CUSHIONS, VALANCE ARMS & ACCESSORIES



**MOCHA**

VALANCE TOP, PILLOWS & DINETTE INSERT



CURTAINS



**CARPET**

# Quality Construction

**THE DETAILS ARE WHAT MAKE ALL THE DIFFERENCE.** Rockwood takes pride in constructing the very best products possible in each price point. From our entry level units to our top of the line products, no short cuts are taken to achieve excellence. From the all-steel I-beams to the residential interior amenities to the vacuum-bonded exteriors, Rockwood products are quality built from the ground-up.



- A** Glued and screwed wood cabinetry
- B** Aluminum dinette frames for added strength and weight savings
- C** 5/8" Tongue & Groove Plywood sub-floor glued and screwed down.
- D** Extra large dinette storage drawers and full extension metal drawer guides in the kitchen
- E** Dexter Torflex Axles:
  - Independent wheel suspension and self-damping action
  - Rubber cushioning eliminates metal-to-metal contact.
  - Forged torsion arm for maximum strength
- Models are also equipped with E-Z Lube® System and Nev-R-Adjust® Brakes.
- F** Enclosed underbelly protects trailer components as well as increasing aerodynamics
- G** Aluminum Frame Construction with high gloss fiberglass exterior and deluxe graphics

## ROOF CONSTRUCTION



Vacuum-bonded radius roof with vaulted ceiling providing Ultraior insulation and more interior height.



4" thick roof with built in insulated A/C ducts



Built strong to enable you to conveniently perform periodic roof maintenance.

## WALL STRENGTH



Structurally engineered materials makes our vacuum-bonded walls some of the strongest in the industry.

## VACUUM-BONDED LAMINATED CONSTRUCTION



Rockwood is one of only a few manufacturers with six sided aluminum framing. Vacuum bonded walls and roof to ensure a well-insulated, light weight, strong structural trailer.

# Standards & Options

## ROCKWOOD ULTRA LITE TRAVEL TRAILERS & FIFTH WHEELS

MODELS	TT	FW	MODELS	TT	FW	MODELS	TT	FW
<b>STANDARD PACKAGES INCLUDE:</b>	<b>PKG. F</b>	<b>PKG. E</b>	Automotive Windshield (Pkg. F Only Where Applicable)	S*	--	MP3 Player Hook-Up	S	S
Wifi Ranger Wifi Booster	S	S	Rear Observation Camera Prep w/ Molded Mounting Plate	S	S	Designer Valances w/ Lambrequin Arms	S	S
Reese Revolution Pin Box Hitch (Pkg. E Only)	--	S	Solar Panel Prep	S	S	Night Shades	S	--
Aluminum Bed and Dinette Base	S	S				Day/Night Shades	0	S
6 Sided Aluminum Cage Construction	S	S	<b>INTERIOR FEATURES</b>			Swivel Rocker Chair (Per Floor Plan)	S*	S*/0*
Vacuum Laminated 1 Piece Roof and Walls	S	S	Driftwood Interior	S	S	Swivel Rocker Recliners ILO Swivel Rockers		
Enclosed Underbelly	S	S	Maple (w/ Solid Maple Glaze Finished Cabinet Doors) Interior	0	0	(Opt. 2720WS Only)	--	0*
4 Frame Mounted Stabilizer Jacks (Pkg. F Only)	S	--	Decorative Slide Out Fascia	S	S	Swivel Rocker Recliners ILO Chaise Lounge		
Power Landing Legs and Stabilizer Jacks (Pkg. E Only)	--	S	Solid Wood and Raised Panel Doors and Drawers	S	S	(Opt. 2902WS Only)	0*	--
Power Awning w/ Adjustable Rain Dump and LED Light Strip	S	S	Screwed and Glued Wood Cabinetry	S	S	Heated Theatre Seating w/ USB Ports, Cup Holders and		
Torsion Axle, Rubber-Ryde Suspension	S	S	Residential Full Extension Metal Drawer Guides	S	S	Removable Tables (Per Floorplan)	0*	0*
Nitro Filled Radial Tires	S	S	Engineered Mold and Mildew Resistant Floor Covering	S	S	Deluxe Tri-Fold Sleeper Sofa (Per Floor Plan)	S*	S*
Polished Alloy Wheels	S	S	Bedroom Carpet (N/A 2304DS)	0	S	48" X 84" Spacious King-U-Style Dinette (Std. 2304DS,		
LED TV w/ Multi-directional Antenna	S	S	Floor Ducted Furnace	S	S	2706WS, 2703WS)	S*	S*
Multi Zone Stereo w/ DVD/CD/AM/FM and Bluetooth Control	S	S	15,000 BTU A/C	0	0	Free Standing High Pressure Laminated Table with Swing Level Legs	S	S
Slam Latch Baggage Doors	S	S	2nd Roof A/C w/ Chill Chaser Heat Strip and 50 Amp Service			Free Standing Table and Chairs	0*	0*
Magnetic Door Holds	S	S	(N/A 2304DS)			Stainless Steel Appliances	0	0
Outside Speakers	S	S	and Digital Dual Thermostat Control	0*	0	Raised Refrigerator Panels	0	0
Maxxair® Ventilation Fan and Vent Cover	S	S	50 Amp Service w/ 2nd A/C Prep (N/A 2304DS)	0*	0	Residential One-Piece Sink Cover	S	S
13,500 BTU Ducted Roof A/C	S	S	Fireplace (Std. 2707WS, 2780WS, 2880WS, Opt. 2703WS, 2902WS,			Cutting Board	S	S
Under Mount Double Bowl Kitchen Sink w/ Residential Style Faucet	S	S	2906WS, 2440BS, 2620WS, 2650WS)	S*/0*	S*/0*	Counter Top Extension (Per Floor Plan)	S*	S*
Solid Surface Kitchen Countertops	S	S	Carbon Monoxide Detector	S	S	Water-Pur Filtration System	S	S
Recessed 3 Burner Cooktop and Large Oven w/ Flush Mount Cover	S	S	12 Volt Power Plug Hook-up	S	S	Tub Surround	S	S
Roller Bearing Drawer Guides	S	S	GSA	0	0	Radius Glass Door Shower	S*	S*
Microwave Oven	S	S	Monitor Panel Switch Station	S	S	Large Shower w/ Sliding Glass Door (Std. 2606WS, 2612WS, 2706WS,		
Double Door Auto Gas/Elec. Large Refrigerator	S	S	55 Amp Converter With Charger	S	S	2909WS, 2780WS)	S*	S*
Serta Innerspring Mattress	S	S	Battery Disconnect Switch	S	S	Bathroom Skylight	S	S
Quick Recovery Auto Ignition Gas/Electric Water Heater	S	S	Recessed Ceiling LED 12 Volt Interior Lighting	S	S	Water Heater By-Pass Kit	S	S
Black Tank Flush	S	S	Bedroom Mounted 24" LCD TV (Opt. All UL Models Except			Foot Flush Toilets	S	S
Spare Tire Carrier and Cover	S	S	2304DS)	0*	0*	Extra Maxxair® Ventilation Fan and Vent Cover	0	0
Outside Grill	S	S	32" LCD TV w/ Premium Soundbar	S	S	Murphy Bed w/ Under Sofa Storage System and Outside Access		
Tinted Bonded Frameless Windows	S	S	Digital AM/FM/CD/DVD w/ Remote	S	S	for Unmatched Floor Plan Flexibility (Std. 2304DS)	S*	--

STANDARDS & OPTIONS ARE SUBJECT TO CHANGE.



## MODELS

### EXTERIOR FEATURES

	TT	FW
Fully Aluminum Frame (Floor, Sidewall, & Roof)	S	S
Insulation Factors R-7 Side Wall, R-12 Floor and R-14 Ceiling	S	S
Radius Roofs w/ Interior Vaulted Ceilings	S	S
Vinyl / Rubber Composite Roofing Membrane	S	S
T V Antenna w/ Cable & Satellite Hook-Up	S	S
Rear Observation Camera Prep w/ Molded Mounting Plate	S	S
Laminated Champagne Colored Fiberglass Sidewalls	O	O
Laminated Fiberglass Sidewalls	S	S
Distinctive Black Exterior Trim	S	S
Electric Slide-Out (All Slide Out Models)	S	S
Decorative Frame Skirting	S	S
Rear Ladder	O	S
Bike Rack Ladder Attachment	O	O
Tongue Mount Bike Rack	O	--
Awning Slide Topper	O	O
30" Primary Entrance/Screen Door	S	S
Friction Hinge Entrance Door	S	S
Large Assist Grab Handles	S	S
Lighted Entry Step and Scare Light	S	S
Radius Corner Windows and Doors	S	S
Thermopane Windows	O	O
Large Dinette Picture Window	S	S
Outside Shower	S	S
1/2 Sliding Storage Tray (N/A 2304DS, 2604WS)	O*	--
Outside Antifreeze Stations	S	S
Front Outside "Trunk" Storage Separated From Heated		
Pass Thru Storage Compartments	--	S
Two-30 Lb Gas Bottles	S	S

## MODELS

	TT	FW
Enclosed Gas Bottles w/ Storage Door Access	--	S
Molded Bottle Cover	S	--
Surface Coated Steel I-Beam Frame	S	S
Reese Revolution Hitch	--	S
Power Front Landing Jacks	--	S
Power Tongue Jack	O	--
Power Stabilizer Jacks (Fifth Wheels: Rear Jacks only)	O	O
Easy Lube Axles and Nev-R Adjust Brakes	S	S
Triple Entry Step	S	S
Electronically Controlled Heated Holding Tanks	O	S

TT = ULTRA LITE TRAVEL TRAILER, FW = ULTRA LITE FIFTH WHEEL, S = STANDARD, O = OPTIONAL, -- NOT AVAILABLE, \* = SELECTED MODELS

**FREE MEMBERSHIP**  
to Forest River Owners' Group

www.forestriverfrog.com



CUSTOMER SATISFACTION



www.Forest River Buy Local.com



**PRE-DELIVERY INSPECTION FACILITY**

20,000 square feet of quality assurance. The bare essentials for a premium product. This state-of-the-art facility gives immediate daily feedback to production for quality assurance in every unit built.

**24/7 EMERGENCY ROADSIDE ASSISTANCE**

For a worry-free ownership experience Forest River includes one

year of Coach-Net RV Technical & Roadside Assistance with each RV purchase. Whether new to the RV lifestyle or an experienced RV enthusiast, Forest River owners have 24/7 access to technical, operational and emergency road service coverage throughout the US & Canada.

Coach-Net's fast, dependable service is just a phone call away.

**Coach-Net®**  
RV Technical & Roadside Assistance



Rockwood Geo Pro



Rockwood Freedom, ESP, Premier, High Wall, Hard Side Campers



Rockwood Mini Lite and Roo



Rockwood Signature Ultra Lite TT, Fifth Wheel and Windjammer

**Specification Definitions**

**GVWR (Gross Vehicle Weight Rating)** - is the maximum permissible weight of the unit when fully loaded. It includes all weights, inclusive of all fluids, cargo, optional equipment and accessories. For safety and product performance do NOT exceed the GVWR.

**GAWR (Gross Axle Weight Rating)** - is the maximum permissible weight, including cargo, fluids, optional equipment and accessories that can be safely supported by a combination of all axles.

**UVW (Unloaded Vehicle Weight)\*\*** - is the typical weight of the unit as manufactured at the factory. It includes all weight at the unit's axle(s) and tongue or pin and LP Gas. The UVW does not include cargo, fresh potable water, additional optional equipment or dealer installed accessories.

\*Estimated average based on standard build optional equipment.

**CCC (Cargo Carrying Capacity)\*\*** - is the amount of weight available for fresh potable water, cargo, additional optional equipment and accessories. CCC is equal to GVWR minus UVW. Available CCC should accommodate fresh potable water (8.3 lbs per gallon). Before filling the fresh water tank, empty the black and gray tanks to provide for more cargo capacity.

\*\*Estimated average based on standard build optional equipment

Each Forest River RV is weighed at the manufacturing facility prior to shipping. A label identifying the unloaded vehicle weight of the actual unit and the cargo carrying capacity is applied to every Forest River RV prior to leaving our facilities.

The load capacity of your unit is designated by weight, not by volume, so you cannot necessarily use all available space when loading your unit.

**ROCKWOOD WARRANTY**

For details on Rockwood's complete warranty program, see your Rockwood dealer. When it comes to backing products with the same quality and commitment it does when it begins the manufacturing process, the only name you have to remember when you're looking for a recreational vehicle is Rockwood. Rockwood offers the following additional limited warranties to the original purchasers. Consult written warranty for details.

1. Twelve-year vinyl roof warranty,
2. Two-year fiberglass warranty,
3. Ten-year axle warranty,
4. One-year bumper to bumper warranty



**Learn More**  
Scan this barcode using a QR Reader on your smart phone to learn more about Forest River.



A Berkshire Hathaway company.



201 WEST ELM MILLERSBURG, IN 46543 WWW.FORESTRIVERINC.COM/ROCKWOOD 574.642.2640

YOUR ROCKWOOD DEALER

All information contained in this brochure is believed to be accurate at the time of publication. However, during the model year, it may be necessary to make revisions and Forest River, Inc., reserves the right to make all such changes without notice, including prices, colors, materials, equipment and specifications as well as the addition of new models and the discontinuance of models shown in this brochure. Therefore, please consult with your Forest River, Inc., dealer and confirm the existence of any materials, design or specifications that are material to your purchase decision. Litho. U.S.A FOR 1478 P/W: 2017.10.17