

Berkshire

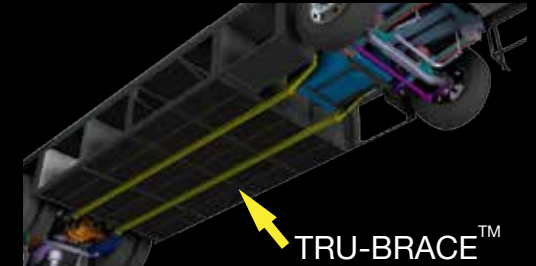


TRU-BRACE

Forest River Diesel Chassis Upfit Support System



Your home on wheels needs a solid foundation, that is why your Forest River Diesel Chassis is upfit by MORryde.



Structure built on a fixture table for optimum leveling and squareness. Laser cutting +/- 0.010. Bending within +/-01 degree.

ORIGINAL CHASSIS

UPFIT WITH THE TRU-BRACE™ REINFORCED FRAME



Aluminized Steel Side Skirts *prevent rust* and *prolong the life* of the structure

Side skirts assembled as one piece to *minimize seams* and *prevent rust creep*

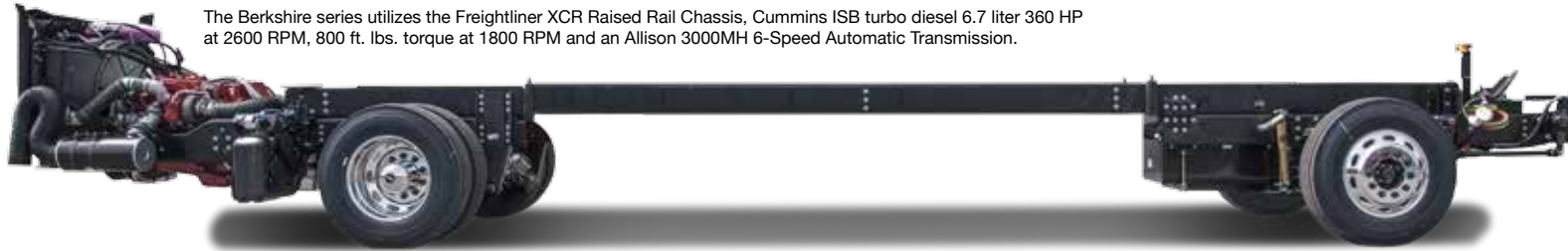
Upgraded from molded plastic, the steel bays hold *more weight* for your gear

The Tru-Brace™ reinforcements *strengthen the frame*, *reduce chassis flex* and *minimize the springboard effect* that whips the back of your unit up and down over rough roads.

DRIVE THE DIFFERENCE.

You expect more, we deliver more.

At Berkshire we know your standards are high, and we strive not to meet but to exceed your expectations. From the ground up, the Berkshire series is designed to bring you complete comfort on the road. In our effort to bring you unparalleled excellence, we proudly utilize only the finest components and building processes in the industry as a sign of our dedication to your satisfaction.



The Berkshire series utilizes the Freightliner XCR Raised Rail Chassis, Cummins ISB turbo diesel 6.7 liter 360 HP at 2600 RPM, 800 ft. lbs. torque at 1800 RPM and an Allison 3000MH 6-Speed Automatic Transmission.



Introducing the V-Ride™ Rear RV Suspension System from FCCC. As the first ever single axle suspension rated at 21,000 pounds and higher, it's designed for today's demanding luxury motorhome owners- who want the ability to carry more gear, the freedom to equip their interiors with premium amenities, and a comfortable, confident driving experience.*

CONSTRUCTION BENEFITS



BERKSHIRE CONSTRUCTION BENEFITS:

1. For quality assurance, all construction takes place in a single facility.
2. Auxiliary air chuck on 1.5" insulated firewall.
3. Neoprene isolator between chassis and floor eliminates vibration.
4. Truma continuous hot water heater.
5. Easy interior dash access.
6. Auxiliary LP hook-up on curb side.
7. Minimal connections on all water lines.
8. Our fiberglass dash is integrated with the front cap.
9. All firewall openings sealed and grommets to eliminate electrical shorts

EXTERIOR FEATURES



EXTERIOR FEATURES:

1. All Berkshires feature an exterior entertainment center with a 32" LED HDTV with radio and auxiliary jack.
2. The Berkshire's standard slide out 8.0kW generator.
3. Easily access chassis electrical fuses with our exclusive no fuss schematic.
4. Berkshire's water manifold system with whole unit water filter and exterior shower.
5. Standard strut assisted café compartment doors with pass thru storage and optional slide-out storage tray.
6. Equalizer Systems hydraulic extend and retract landing gear. Automatic, one touch operation levels your motorhome in less than two minutes, operating each leg independently in a sequential process.

Berkshire



Berkshire





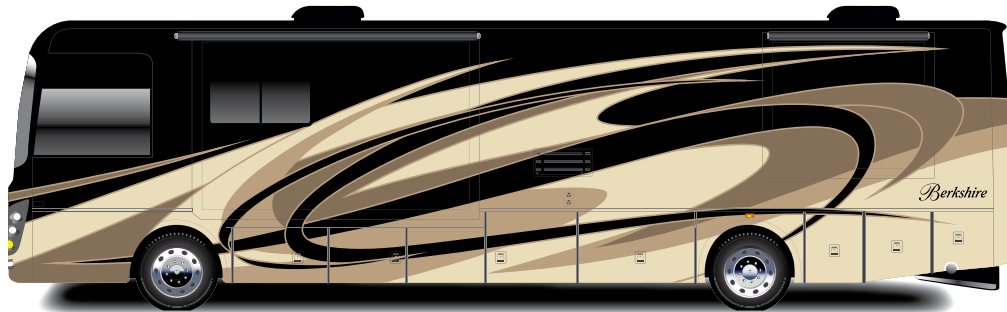
Berkshire



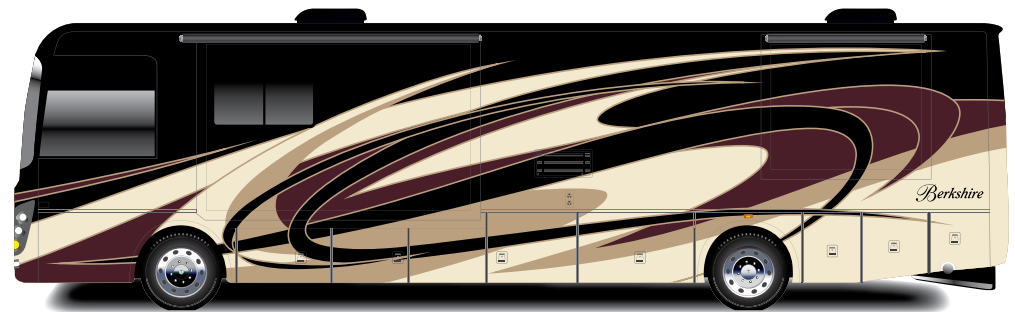
NEW MOON EXTERIOR OPTION

Berkshire

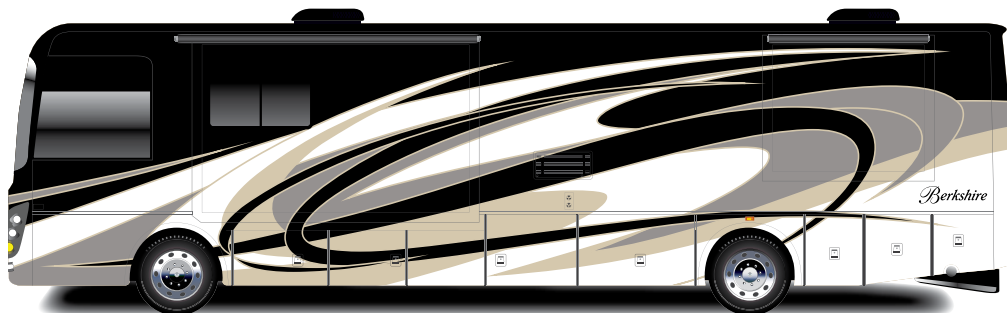
PAINT PACKAGES | DECOR OPTIONS



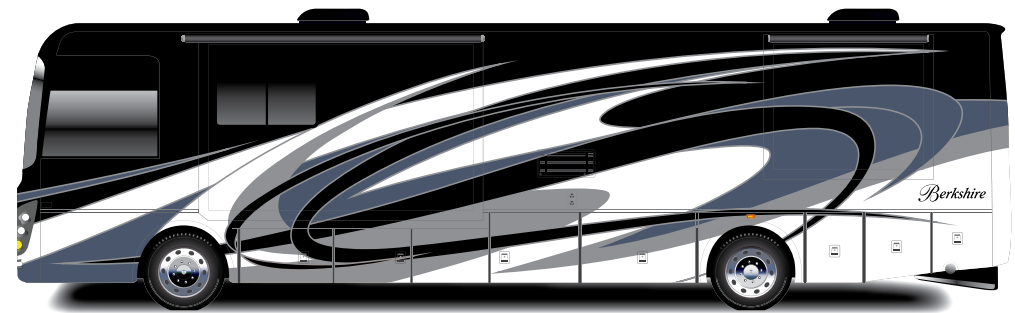
DUNE



PAINTED ROCK



NEW MOON



ISLAND

WOOD GRAIN OPTIONS



NATIVE CHERRY

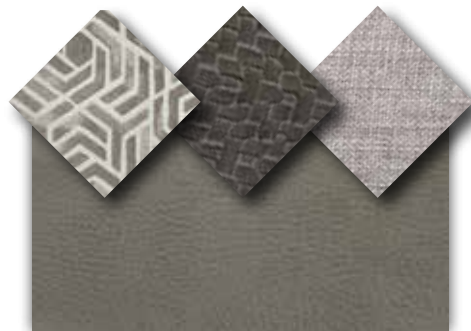


SIERRA MAPLE

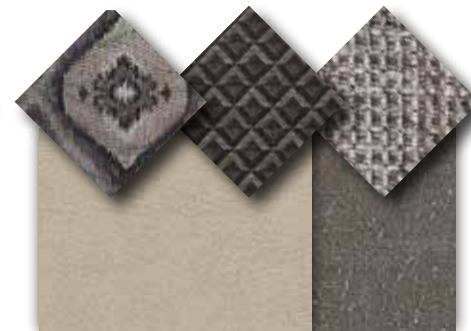


CARAMEL CHERRY

DECOR OPTIONS



MILAN

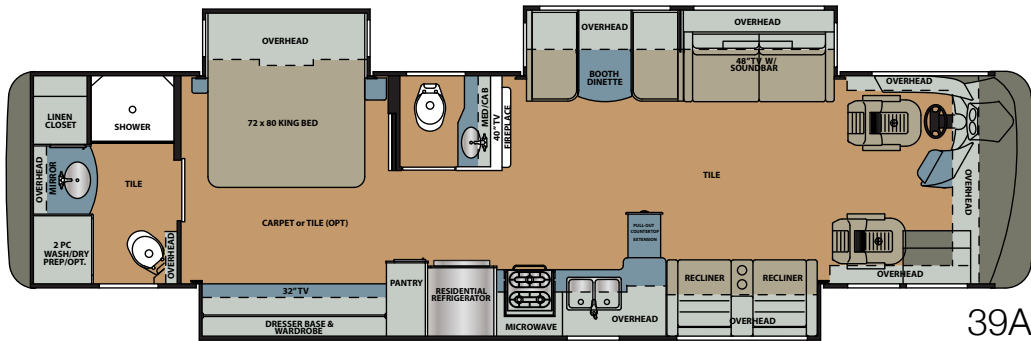
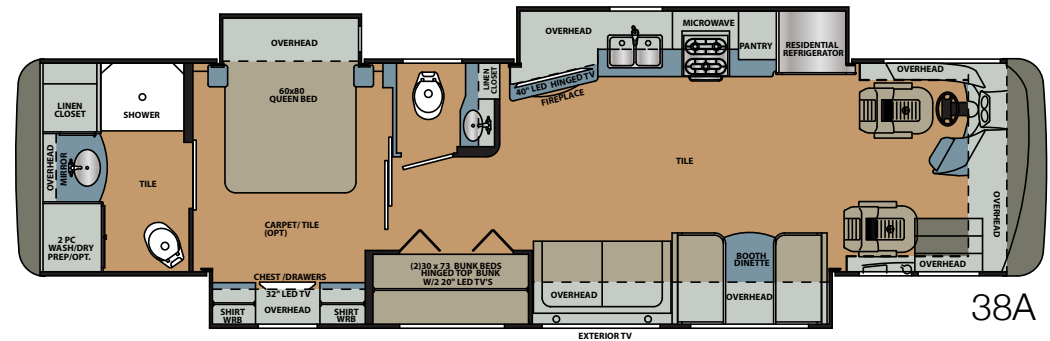
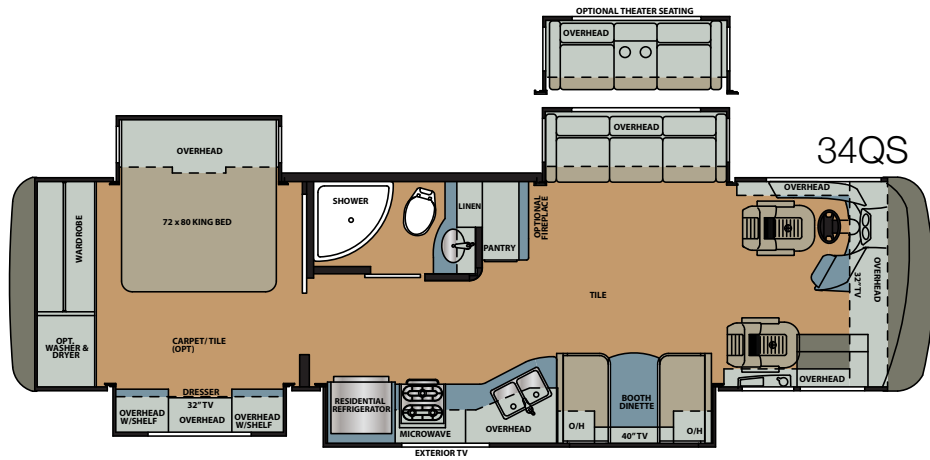


ASPEN



SAHARA

FLOORPLANS | SPECIFICATIONS



Floorplan	Length (Feet)	GVWR (Lbs.)	GCWR (Lbs.)	GAWR Front (Lbs.)	GAWR Rear (Lbs.)	Wheelbase (Inches)	Height* (Feet)	Width* (Inches)	Basement storage* (Cu. Ft.)	Awning (Feet)	Fresh Tank (Gal.)	Gray Tank (Gal.)	Black Tank (Gal.)	LP Tank	Furnace (BTU's)	Hot Water
34QS	35' 7"	32,350	42,350	12,350	20,000	206"	12' 7"	100"	130'	14' 7"	103	66	42	24.5	35,000	Continuous
38A	39' 5"	33,350	43,350	12,350	21,000	252"	12' 7"	100"	183'	18' 0"	103	66	42	24.5	42,000	Continuous
39A	39' 6"	33,350	43,350	12,350	21,000	252"	12' 7"	100"	183'	18' 0"	103	66	42	24.5	42,000	Continuous

Please see back cover for more information regarding weights.

Automotive & Cockpit Standards

- Freightliner XCR raised rail chassis
- Cummins ISB turbo diesel 6.7 liter 360 HP at 2600 RPM, 800 ft. lbs. torque at 1800 RPM
- Allison 3000MH 6-Speed automatic transmission
- 120v engine heater 750W
- 22.5" polished aluminum wheels
- Michelin X line energy Z 275/80R22.5 tires
- 10,000 Lb. tow capacity
- Allison electronic push button shifter
- 100 gallon, locking dual fill fuel tank
- Driver side mounted 13 gallon DEF tank
- LCD engine message center
- Day time running lights
- 7-Pin tow power connector
- 18.7 CFM air compressor
- Farr Eco-air cleaner
- Air filter restriction indicator
- Fuel/water separator
- Brake line air dryer with heater
- Automatic, heated moisture ejectors
- Power steering
- Washer/heavy duty-wiper with intermittent function
- 160 amp alternator
- Two (2) 1900 CCA at 0 degree Fahrenheit, maintenance free batteries
- Full air ABS brakes with auto slack adjuster, front disc brakes
- Variable exhaust brake
- Telescopic/tilt steering wheel
- Suspension Neway front and V- Ride rear
- Sachs custom tuned shock absorbers
- 55 degree wheel cut
- Auto air suspension deflation system
- Cross flow, rear mounted radiator
- Transmission oil cooler
- 5 year / 100,000 mile coolant (some maintenance required)
- 4-Spoke VIP black steering wheel
- Electronic cruise control with high idle
- Multiple auxiliary charging ports at dash
- Power stepwell cover
- Entry assist handle

Construction & Exterior Standards

- Fiberglass front and rear caps
- Sikkens® full body painted exterior (4x clear coat)
- Four (4) point fully auto hydraulic leveling system with auto air dump
- Steel basement structure
- Tru-Brace chassis support system
- Rust resistant aluminized steel chassis skirts
- Diamond shield front mask protective film
- 1 Piece Fiberglass Roof
- Top-mount remote exterior/heated/mirrors/with cameras
- Frameless dual pane, dark tint windows
- Automotive foam and Ziebart seal undercoating
- Carefree power door awning
- Carefree Latitude dual pitch patio awning with LED lighting and wind sensor
- Carefree slide out topper with covers
- Full height strut assisted compartment doors with full pass through storage
- "One Key" system, exterior compartment, entry door and fuel fill doors
- Quiet integrated A/C intake/ducting roof system
- Crowned and layered vacuum bonded fiberglass roof
- Vacuum bonded 3" floor with tubular aluminum frame
- Gel coat vacuum bonded sidewalls, slideout floors and walls
- 1/2" Structure wood flooring
- Block foam polystyrene insulation walls/roofs/floors
- 30" Entryway
- In wall channeled drains for A/Cs
- Tubular steel firewall with polystyrene insulation
- Lighted exterior assist handle
- Two piece rear ladder
- 84" interior ceiling height
- PTL steel entrance door with deadbolt
- Auxiliary air chuck (front drivers side compartment)
- Auxiliary LP supply, quick connect (passenger side)
- LED marker lights
- Full length mud flap with chrome Forest River name

Electrical Standards

- 50A service w/auto transfer switch and 30' power cord
- 8kW Onan diesel generator with manual slide tray
- Energy management system
- Electronic battery disconnect switch
- Remote generator start switch (on dash/bedroom)
- Multi-Plex Lighting with smart APP Controls
- Dimmer control lighting throughout
- LED ceiling light package
- Driver and passenger LED ceiling map lights
- Cosmetic bathroom lighting
- Decorative wall and dinette lighting where applicable
- Auxiliary engine start switch at dash
- Individual reading lights at bed overhead
- 2000w pure sine wave inverter/charger
- Auto generator start control
- Four (4) Six volt deep cycle house batteries
- Chassis & House batteries master shut off switches
- LED porch and patio lights
- Easy read 12v circuit house load center
- Solar panel controller with roof prep
- Automotive chassis fuse panel

Plumbing Standards

- Variable speed constant pressure water pump
- Individual zoned hot/cold manifold water supply system
- 4-way water management valve in water bay compartment
- Bath - Solid surface under mount sink
- Kitchen - Stainless steel under mount sink
- One piece fiberglass shower with tempered glass door and skylight
- Whole house water filter
- Black water tank flush system
- Kitchen-Single lever faucet with pull-out sprayer
- Double lever lavatory faucets
- Porcelain china bowl toilet with foot flush
- Tecma macerator toilet (rear bath) (N/A 34QS)
- Clean-easy exterior shower hose
- Convenience monitor panel at water bay
- 360 roof vent caps

Driver/Passenger Area Standards

- One piece windshield
- Power front day/night shades
- Manual passenger and driver window night shade
- Metallic cherry wood grain dash panels (N/A Milan)
- Fog lights
- 10" Dash radio with integrated color back-up and side view camera package with navigation
- Wrap around cockpit with 6 gauge instrument cluster
- Leatherette driver seat, swivel and recline with 6-way power adjustments
- Leatherette passenger seat, swivel, recline and manual footrest
- Driver and passenger side console with cupholders
- Lighted tiled step well
- Two (2) Defroster fans with high and low settings
- Driver/passenger cup holders
- Multiple USB charging ports
- Automotive dash AC/Heater with deluxe controls

Entertainment Standards

- 48" LED TV, living room (N/A 34QS, 39A)
- 40" LED TV, living room (N/A 38A)
- 32" LED TV, bedroom
- 32" LED TV, exterior
- 19" LED TV, (2) each bunk with easy access HDMI jack (N/A 34QS, 39A)
- Sound Bar with radio, integrated sub and Bluetooth
- Roof mount Winegard Trav'ler satellite prep
- Park/cable TV prep
- High Definition Cat6 matrix signal distribution
- High Definition digital TV antenna with signal strength indicator
- Blu-ray DVD player

Interior Standards

- Polished porcelain tile
- Hardwood cabinetry and slideout fascia
- Raised panel hardwood cabinet doors with glaze
- Hidden hinges and bar pull style cabinet hardware
- Carpeted slide-outs where applicable
- Window valances

- Bedroom carpet with padding
- Visionary hide-a-bed sofa
- Theater Seating with Recliners (Opt. 34QS, 38A)
- Polished solid surface kitchen/dinette countertops with flush sink and stove covers
- Décor laminate on all other countertops
- Soft close ball bearing drawer guides in kitchen
- Full extension ball bearing metal drawer guides
- Galley storage compartment for range and sink covers
- Pull out kitchen countertop (N/A 34QS)
- Bi-fold doors with bunk beds (N/A 34QS, 39A)
- "Soft Touch" Dream booth dinette with storage underneath
- Soft Touch padded ceiling
- Roller style day/night shades
- Dresser drawers and wardrobe type cabinets
- 72" X 80" king pillow top with bedspread and decorative pillows (N/A 38A)
- 60" X 80" queen pillow top with bedspread and decorative pillows (N/A 34QS, 39A)
- Hardwood headboard with padded insert
- Bedroom, overhead cabinets
- Bed night stands (one featuring dual USB jack)
- Mirrored medicine cabinets
- Towel bar, toilet paper holder and towel ring

Appliances Standards

- 15,000 BTU with heat pump (front), 15,000 A/C (rear) low profile A/C's
- Holding tank heat pads
- Truma continuous flow tankless gas hot water heater
- 35,000 BTU furnace (N/A 38A, 39A)
- 42,000 BTU furnace (N/A 34QS)
- 30" OTR convection microwave oven
- 2 Door residential refrigerator
- Sealed 3-burner stainless recessed cook top
- Power fan in bathroom with rain cover
- Maxxair in galley w/wireless remote control with rain cover
- Washer/dryer prep

Safety Standards

- 110 GFI protected circuits
- Carbon monoxide detector
- LP gas detector with auto tank shutoff
- Smoke alarm
- Egress window
- Surface mounted fire extinguisher

Interior Options

- Theater Seating w/twin recliners IPO of standard Visionary Sofa (N/A 38A, 39A)
- Porcelain wood plank tile
- Polished porcelain or wood plank (Opt.) tile in bedroom IPO carpet
- Fitted Cockpit floormat with "Berkshire" logo

Exterior Options

- Slide tray in basement compartment

Driver/Passenger Area Options

- 32" LED TV, front overhead (N/A 39A)

Appliance/Electronic Options

- Trav'ler (Winegard) satellite antenna- Direct TV (US)
- Trav'ler (Winegard) satellite antenna- Shaw (Canada)
- Electric fireplace
- Stackable washer/dryer



Berkshire

24/7 EMERGENCY ROADSIDE ASSISTANCE

For a worry-free ownership experience Forest River includes one year of Coach-Net RV Technical & Roadside Assistance with each RV purchase. Whether new to the RV lifestyle or an experienced RV enthusiast, Forest River owners have 24/7 access to technical, operational and emergency road service coverage throughout the US & Canada. Coach-Net's fast, dependable service is just a phone call away.

Coach-Net®
RV Technical & Roadside Assistance




PRE-DELIVERY INSPECTION FACILITY
20,000 square feet of quality assurance. The bare essentials for a premium product. This state-of-the-art facility gives immediate daily feedback to production for quality assurance in every unit built.

CUSTOMER SATISFACTION

FOREST RIVER encourages you to

BUY LOCAL

PREFERENTIAL SERVICE

PRODUCT INFORMATION

www.ForestRiverBuyLocal.com

GVWR (Gross Vehicle Weight Rating) - is the maximum permissible weight of the unit when fully loaded. It includes all weights, inclusive of all fluids, occupants, cargo, optional equipment and accessories. For safety and product performance do NOT exceed the GVWR.

GCWR (Gross Combined Weight Rating) - Is the maximum permissible loaded weight of your motor home and any towed trailer or towed vehicle. Actual GCWR of this vehicle may be limited by the sum of the GVWR and the installed hitch receiver maximum capacity rating; see hitch rating label for detail.

GAWR (Gross Axle Weight Rating) - is the maximum permissible weight, including cargo, fluids, optional equipment and accessories that can be safely supported by each axle.

UVW (Unloaded Vehicle Weight)* - is the typical weight of the unit as manufactured at the factory. It includes all weight at the unit's axle(s), including full fuel, all fluids and LP Gas. The UVW does not include cargo, fresh potable water, additional optional equipment or dealer installed accessories.

*Estimated Average based on standard build optional equipment.

CCC (Cargo Carrying Capacity)** - is the amount of weight available for fresh potable water, cargo, passengers, additional optional equipment and accessories. CCC is equal to GVWR minus UVW. Available CCC should accommodate fresh potable water (8.3 lbs per gallon). Before filling the fresh water tank, empty the black and gray tanks to provide for more cargo capacity.

** Estimated average based on standard build optional equipment.

Each Forest River RV is weighed at the manufacturing facility prior to shipping. A label identifying the unloaded vehicle weight of the actual unit and the cargo carrying capacity is applied to every Forest River RV prior to leaving our facilities.

The load capacity of your unit is designated by weight, not by volume, so you cannot necessarily use all available space when loading your unit.

Actual towing capacity is dependent upon your particular loading and towing circumstances, which includes the GVWR, GAWR and GCWR as well as adequate trailer brakes. Please refer to the Operator's Manual of your vehicle for further towing information.

Berkshire



Learn More
Scan this barcode using a QR Reader on your smart phone to learn more about Forest River.



A Berkshire Hathaway company.

Forest River Diesel Division
1800 W. Hively Ave.
Elkhart, IN 46517
(574) 522-3693
www.forestriverinc.com/diesel
www.forestriveraccessories.com

All information contained in this brochure is believed to be accurate at the time of publication. However, during the model year, it may be necessary to make revisions and Forest River, Inc., reserves the right to make all such changes without notice, including prices, colors, materials, equipment and specifications as well as the addition of new models and the discontinuance of models shown in this brochure. Therefore, please consult with your Forest River dealer and confirm the existence of any materials, design or specifications that are material to your purchase decision.

FREE MEMBERSHIP
to Forest River Owners' Group

www.forestriverfrog.com



©2017 Berkshire- a division of Forest River Inc.
A Berkshire Hathaway company

