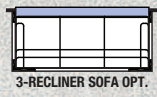
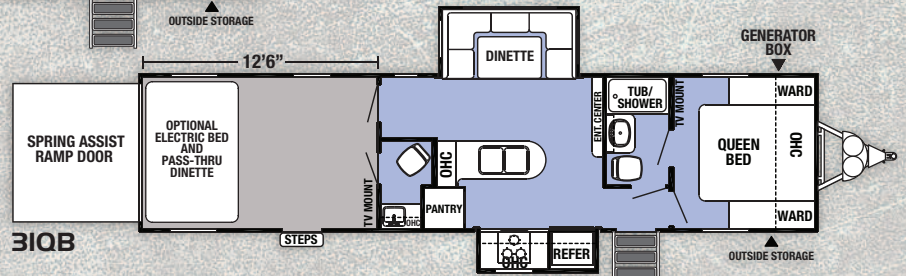
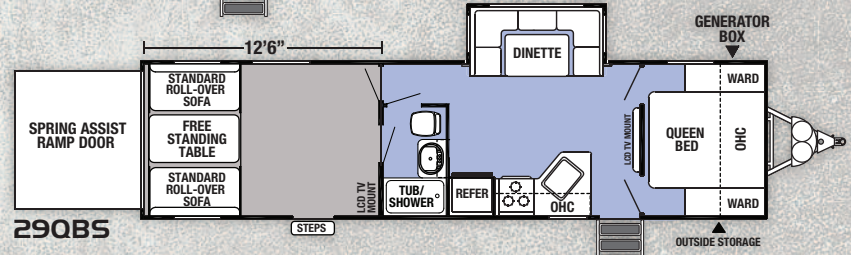
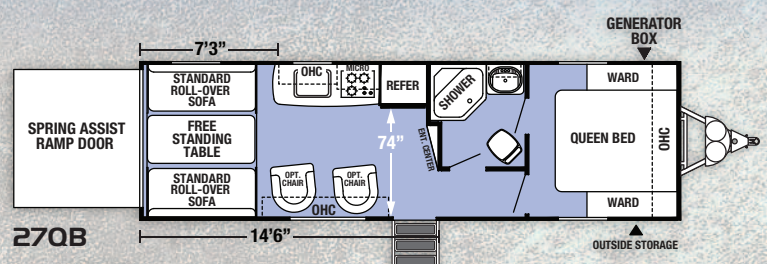
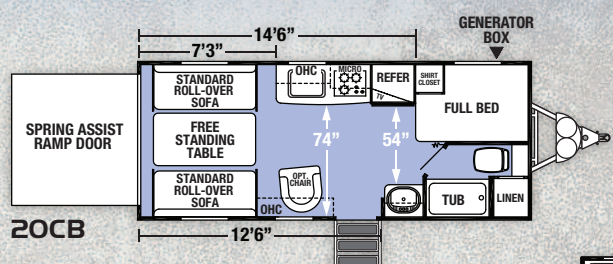


XLR TOY HAULERS BOOST

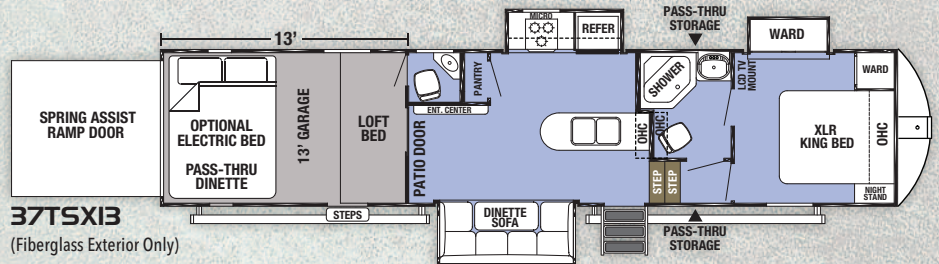
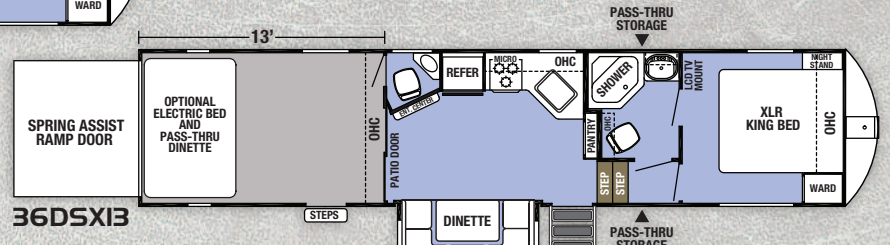
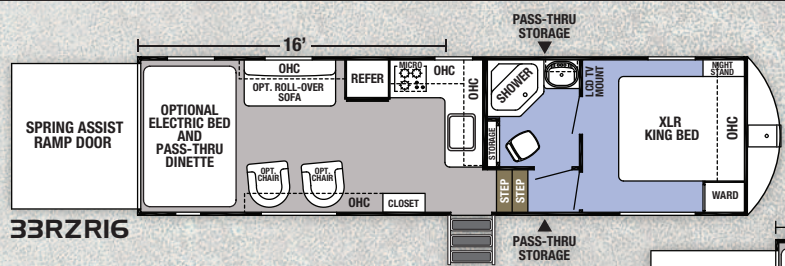


TRAVEL TRAILERS



This optional three recliner sofa is available on 29QBS, 31QB, 36DSX13 and 37TSX13

FIFTH WHEELS



XLR TOY HAULERS BOOST

STANDARDS & OPTIONS

INTERIOR STANDARDS

- 6 Gallon Gas/Electric DSI Water Heater
- USB Charging Station
- Bluetooth Dual Zone AM/FM/CD/DVD Player
- 8 Cu. Ft. Gas/Electric Refrigerator
- 35,000 BTU Forced Air Ducted Furnace
- Ducted Air Conditioning
- Wardrobe Cabinets in Bedroom
- Foot Flush Toilet
- Plywood Decking
- Full Height Ceiling
- Real Wood Doors and Drawers
- Free Standing Dinette Table
- Full Extension Kitchen Drawers (2)
- Deep Single Bowl Kitchen Sink
- Brushed Nickel Hardware
- Skylight Over Bath

EXTERIOR STANDARDS

- 13,500 BTU Air Conditioner
- 102" Wide Body Construction
- Radius Main Entry Door
- Enclosed Tanks
- Seamless EPDM Rubber Roof
- Powder Coated I-Beam Chassis
- Marine Grade External Speakers
- Self Adjusting Brakes
- Radial Tires
- 37TSX13 High Gloss Fiberglass Exterior Sidewall

REV PACKAGE*

- Convection Microwave
- 30 Amp Service with Detachable Cord (TT)
- 50 Amp Service with Detachable Cord (FW)
- Back-up Camera Ready
- Upgraded Bathroom Vent Fan
- Drop In Cooktop with Glass Cover
- 30 Gal. External Fuel Cell with Pump
- External LED Strip Lighting
- Friction Door Hinge
- Generator Prep
- Internal Accent LED Strip Lighting
- LED Interior Lights
- Outside TV Bracket and Hook-ups
- Power Awning
- Power Tongue Jack (Travel Trailers Only)
- Pull-out Kitchen Faucet
- Ramp Light
- RVQ Quick Connect
- Solar Prep
- Decorative Vinyl Flooring
- Spare Tire
- Upgraded Wheels
- Wood Decorative Blinds
- Battery Disconnect
- 2,500 lbs. Tie Downs
- Hot and Cold Outdoor Shower
- Enclosed Underbelly

POPULAR OPTIONS

- LED TV (Mandatory Option)
- Upgraded Main Entry Step (Mandatory Option)
- 15K BTU Main A/C (IPO 13.5K Std.)
- Second 13.5K A/C (Requires 50 AMP)
- 50 AMP Service (Std. on FW)
- 4.0 Onan Generator (TT)
- 5.5 Onan Generator (FW)
- Electric Stabilizer Jacks (N/A 20CB & 27QB)
- Industrial Garage Rubber Floor (Std. on FW)
- Neo Angle Shower Enclosure (Std. on FW, N/A 20CB, 29QBS, 31QB)
- Electric Bed with Max Clearance Pass Thru Dinette IPO Roll Over Sofa (TT)
- Electric Bed with Max Clearance Pass Thru Dinette (FW)
- Ramp Door Patio System
- Collapsible Roof Ladder
- Screen Wall/Tent Wall
- Ultracold Weather Heated Holding Tank 12V Pads
- Euro Recliner Black Leather
- Sofa Slide IPO Dinette Slide (29QB, 31QB, 36DSX13, 37TSX13)
- 58" Steel Roll Over Sofa Off Door Side (33RZR16)
- 58" Steel Roll Over Sofa Door Side (33RZR16, 27QB)
- TT High Gloss Fiberglass Exterior Sidewall
- FW High Gloss Fiberglass Exterior Sidewall (Standard on 37TSX13)
- 100 Gallon Fresh Water Tank Upgrade (Std. in FW)
- Alumafoil Insulation

*REV Package - not all items available on all models

MODEL	TRAVEL TRAILERS				FIFTH WHEELS		
	20CB	27QB	29QBS	31QB	33RZR16	36DSX13	37TSX13
Dry Hitch Weight	853-lbs.	1082-lbs.	1214-lbs.	1465-lbs.	1951-lbs.	2333-lbs.	2958-lbs.
Unloaded Vehicle Weight	4955-lbs.	6385-lbs.	8449-lbs.	9320-lbs.	8558-lbs.	10046-lbs.	12687-lbs.
Cargo Carrying Capacity	2898-lbs.	3600-lbs.	2965-lbs.	4145-lbs.	4999-lbs.	4287-lbs.	4999-lbs.
Exterior Length	25'-0"	31'-0"	36'-10"	39'-3"	33'-2"	38'-8"	39'-9"
Exterior Height w/ AC	12'-5"	12'-5"	12'-5"	12'-5"	13'-5"	13'-5"	13'-5"
Exterior Width	102"	102"	102"	102"	102"	102"	102"
Garage Length	14'-6"	14'-6"	12'-6"	12'-6"	16'	13'	13'
Grey Capacity	38-Gal.	38-Gal.	38-Gal.	38-Gal.	38-Gal.	38-Gal.	38-Gal.
Black Capacity	38-Gal.	38-Gal.	38-Gal.	76-Gal.	38-Gal.	76-Gal.	76-Gal.
Fresh Capacity	46-Gal.	46-Gal.	46-Gal.	46-Gal.	100-Gal.	100-Gal.	100-Gal.
Awning	15'	15'	15'	15'	15'	21'	12' & 12'

GVWR (Gross Vehicle Weight Rating) - is the maximum permissible weight of the unit when fully loaded. It includes all weights, inclusive of all fluids, cargo, optional equipment and accessories. For safety and product performance do NOT exceed the GVWR.

GAWR (Gross Axle Weight Rating) - is the maximum permissible weight, including cargo, fluids, optional equipment and accessories that can be safely supported by a combination of all axles.

UVW (Unloaded Vehicle Weight)* - is the typical weight of the unit as manufactured at the factory. It includes all weight at the unit's axle(s) and tongue or pin and LP Gas. The UVW does not include cargo, fresh potable water, additional optional equipment or dealer installed accessories.

*Estimated Average based on standard build optional equipment.

CCC (Cargo Carrying Capacity)** - is the amount of weight available for fresh potable water, cargo, additional optional equipment and accessories. CCC is equal to GVWR minus UVW. Available CCC should accommodate fresh potable water (8.3 lbs per gallon). Before filling the fresh water tank, empty the black and gray tanks to provide for more cargo capacity.

**Estimated average based on standard build optional equipment

Each Forest River RV is weighed at the manufacturing facility prior to shipping. A label identifying the unloaded vehicle weight of the actual unit and the cargo carrying capacity is applied to every Forest River RV prior to leaving our facilities. The load capacity of your unit is designated by weight, not by volume, so you cannot necessarily use all available space when loading your unit.

XLR Boost by Forest River

2421 Century Drive ■ Goshen, IN 46528 ■ E-mail: XLRinfo@forestriverinc.com
 Phone: 574-642-0438 ■ www.forestriverinc.com/XLR
www.forestriveraccessories.com ■ #XLRtoyhaulers



Actual towing capacity is dependent on your particular loading and towing circumstances, which includes GVWR, GAWR and GCWR, as well as adequate trailer brakes. Please refer to the Owners Manual of your vehicle for further information. All information contained in this brochure is believed to be accurate at the time of publication. However, during the model year, it may be necessary to make revisions and Forest River, Inc., reserves the right to make all such changes without notice, including prices, colors, materials, equipment and specifications as well as the addition of new models and the discontinuance of models shown in this brochure. Therefore, please consult with your Forest River dealer and confirm the existence of any materials, design or specifications that are material to your purchase decision. ©2017 XLR, a Division of Forest River, Inc., a Berkshire Hathaway company. All Rights Reserved. 11/17