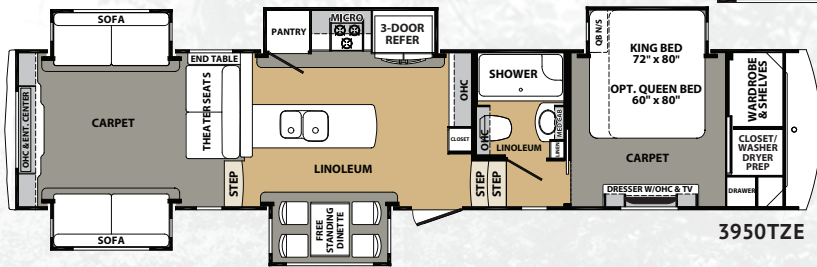
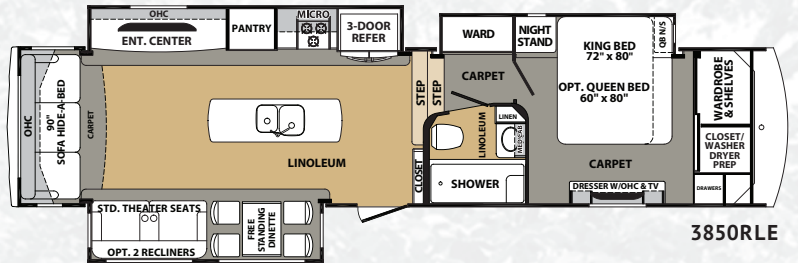
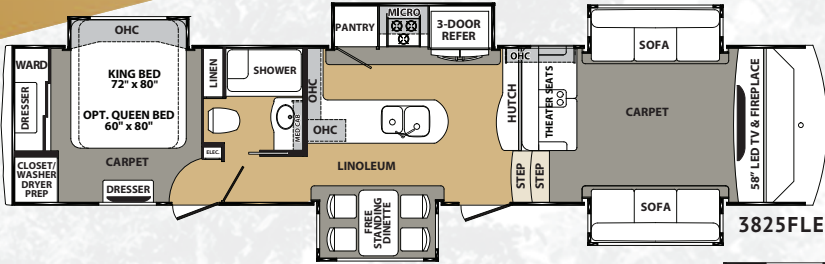
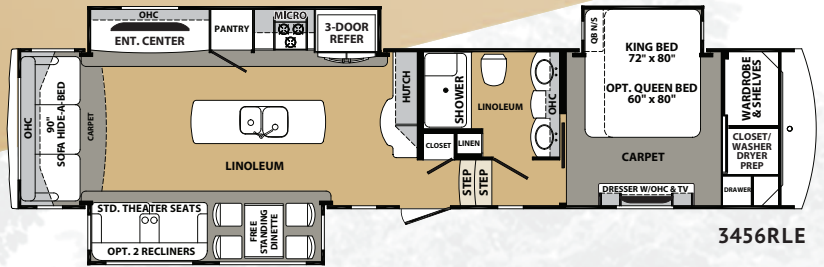


Cardinal

BY FOREST RIVER

Estate



2018 Cardinal Estate	3456RLE	3825FLE	3850RLE	3950TZE
Length (Center of Pin to Rear of Cap)	40' - 8"	41' - 8"	39' - 6"	41' - 1"
Shipping Weight	14361	15317	14288	15410
UVW	14420	15376	14347	15469
Hitch Weight	2527	2592	2722	2950
GAWR	16000	16000	16000	16000
GVWR	18000	18000	18000	18000
Cargo Carrying Capacity (CCC)	3580	2624	3653	2531
Exterior Height	13' 6"	13' 6"	13' 6"	13' 6"
Exterior Width	100"	100"	100"	100"
Interior Height (Bedroom)	81"	105"	81"	81"
Interior Height (Living area)	105"	81"	105"	88"
Tire Size	LT215/75R17.5H	LT215/75R17.5H	LT215/75R17.5H	LT215/75R17.5H
Brake Size	12"	12"	12"	12"
Fresh Water	64 gal.	64 gal.	64 gal.	64 gal.
Waste Water	120 gal.	120 gal.	120 gal.	120 gal.
Water Heater	12 gal.	12 gal.	12 gal.	12 gal.
Furnace	42000 BTU	42000 BTU	42000 BTU	42000 BTU
Patio Awning	19'	6' - 6" & 14'	19'	16'
Exterior Storage (Cu. ft.)	138	107	150	232

CARDINAL

3603 S. Nappanee St.
Elkhart, IN 46517 • (574) 296-7700
www.forestriverinc.com/cardinal
www.forestriveraccessories.com



GVWR (Gross Vehicle Weight Rating) - is the maximum permissible weight of the unit when fully loaded. It includes all weights, inclusive of all fluids, cargo, optional equipment and accessories. For safety and product performance do NOT exceed the GVWR.

GAWR (Gross Axle Weight Rating) - is the maximum permissible weight, including cargo, fluids, optional equipment and accessories that can be safely supported by a combination of all axles.

UVW (Unloaded Vehicle Weight) - is the typical weight of the unit as manufactured at the factory. It includes all weight at the unit's axle(s) and tongue or pin and LP Gas. The UVW does not include cargo, fresh potable water, additional optional equipment or dealer installed accessories.

*Estimated Average based on standard build optional equipment.

CCC (Cargo Carrying Capacity)** - is the amount of weight available for fresh potable water, cargo, additional optional equipment and accessories. CCC is equal to GVWR minus UVW. Available CCC should accommodate fresh potable water (8.3 lbs per gallon). Before filling the fresh water tank, empty the black and gray tanks to provide for more cargo capacity.

**Estimated average based on standard build optional equipment

Each Forest River RV is weighed at the manufacturing facility prior to shipping. A label identifying the unloaded vehicle weight of the actual unit and the cargo carrying capacity is applied to every Forest River RV prior to leaving our facilities.

The load capacity of your unit is designated by weight, not by volume, so you cannot necessarily use all available space when loading your unit.

All information contained in this brochure is believed to be accurate at the time of publication. However, during the model year, it may be necessary to make revisions and Forest River, Inc., reserves the right to make all such changes without notice, including prices, colors, materials, equipment and specifications as well as the addition of new models and the discontinuance of models shown in this brochure. Therefore, please consult with your Forest River dealer and confirm the existence of any materials, design or specifications that are material to your purchase decision.

©2017 Cardinal, a Division of Forest River, Inc., a Berkshire Hathaway company. All rights reserved. 8/17

