

Cedar Creek

HATHAWAY EDITION



Cedar Creek
HATHAWAY EDITION
FIFTH WHEELS

The Smart Choice for the Experienced RV'er



THE SMART CHOICE-

Experienced RV'ers know what they want. Cedar Creek is dedicated to helping people enjoy the outdoors by building better quality recreational vehicles. With almost 20 years in the RV industry, Cedar Creek is truly considered one of the best built products in the marketplace. Many of our owners are enjoying their second and third units. See for yourself why Cedar Creek is the smart choice for the experienced RV'er.

KITCHEN FEATURES:

Anything but basic - Cedar Creek's modern luxury kitchens have a central living space to prepare meals, enjoy dinner and relax comfortably with family and friends.

- Overhead LED Edison lighting above the island and dining table
- Easy-to-clean, one-piece subway ceramic backsplash
- Stainless steel 30" microwave with outside vent
- Large stainless steel oven with Piezo igniter, sealed burners and glass cover. Our oven also includes a double pane glass door with an interior light to view what's cooking
- 19 Cu. ft. stainless steel, residential refrigerator with ice maker and dedicated inverter (Optional 20 cu. ft. French door refrigerator shown)
- Self-closing kitchen drawer guides plus a double waste basket cabinet
- Removable silverware organizer
- Solid surface LG® counter tops with oversized, 60/40 stainless steel sinks
- Freestanding table with four chairs and leaf extension (2 folding, 2 solid chairs)
- Full size pantry with full extension, 7 drawer storage (N/A 34RE, 34RL2)
- Dining with a view, automotive frameless windows – 100% of our windows open



Cedar Creek's residential design creates a feeling of home away from home. Name brand products including Congoleum®, Shaw®, Whirlpool®, La-Z-Boy® and LG® offer high quality products for comfort and peace of mind while on the road.

A stainless steel dishwasher is optional on select models. (36CK2, 38CK2, 38FBD)

Cedar Creek
HATHAWAY EDITION



Cedar Creek

HATHAWAY EDITION




Swivel mounts on our 55" TVs allow for great viewing areas anywhere within the fifth wheel.



The 38FLX fireplace offers a hidden storage area and includes a remote control that is standard in most floorplans. (Not available on the 34RE)



 The 12V Jensen Home Theater System can fully integrate with smart devices, including Apple, and features a 5.5" LED TV, CD/DVD player, and AM/FM stereo with weather band. The 12V sound bar has two mid-tone speakers, two tweeters, two sub-woofers and two outside speakers. Download the J-Control app and have complete control of the stereo from all of your mobile devices, indoors or out.



Cedar Creek

HATHAWAY EDITION



A TRAVELER'S DREAM -

The 38FBD floorplan offers luxury features that make RV ownership a pleasure. Home style amenities including a full pantry, 1-1/2 baths, a main level washer/dryer closet and an 88" La-Z-Boy® Hide-a-bed sofa.

REST EASY

Let Serta® help you rest easy in the comfort of your own bedroom sanctuary. All Hathaway units include a king mattress or an optional queen, for more walk-around space.

38FBD



Cedar Creek Hathaway's luxurious bathrooms feature a 48", one-piece, fiberglass shower with sliding glass doors, built-in shelves and seating, a porcelain toilet with circular flush, a Create-a-Breeze Fantastic fan, LED night lighting, plus a Jack and Jill vanity (N/A on 34RE) with four large storage drawers, large framed mirrors, a convenient medicine cabinet, and generous counter space.







Cedar Creek

HATHAWAY EDITION

HOME STYLE CONVENIENCE

This ergonomically designed kitchen is appointed with contemporary, European Beech fascia and cabinet doors with hidden hinges, plus self-closing, full extension drawer glides.

The 38FLX front living area features two Hide-a-bed sofas, and a wall-hugger love seat with individual foot rests. Sit back, relax and enjoy the entertainment center in peace and comfort with the roof mounted Whisper Quiet high performance air conditioner with cold air returns. Shown with Raven decor and an Almond sofa set.



RECLINERS AND THEATER SEATING Live life comfortably with our standard La-Z-Boy® sofa sets. Choose Chestnut or Almond recliners for residential comfort that lasts a lifetime. Option a wall hugger theater seat for no extra charge or upgrade to power theater seating.



Chestnut



Almond



Optional Theater Seats are available in Almond or Chestnut



Our La-Z-Boy® Hide-a-Bed sofas include a La-Z-Boy® quilted mattress.



Our freestanding table comes standard with a large leaf extension and four chairs, (two with hidden storage and two fold-away).



Wireless Remote Control – A Forest River exclusive that has controls for the electric awning, slide rooms, all jacks including the optional “level-up”, and security entrance lighting.

INTERACTIVE MOBILE MANUALS

Download our Cedar Creek mobile app or visit our dynamic online manual to enhance your ownership experience. These interactive options provide incredible ease and insight into use, maintenance and enjoyment of your Cedar Creek product. Ranging from “How-To” videos, pictures and illustrations of various components, systems and features, to fully searchable content and downloadable PDFs for individual component owner’s manuals, answers are always just a click away.



View the online manual at www.forestriverinc.com/cedarcreek/ownersmanuals, or download our FREE app from the App Store or Google. Play!



The Docking Station includes outside shower, black tank flush, water bypass, 12V battery disconnect, selector switches, dump valves, water tank and city fills for centralized convenience.



Rinse off to avoid tracking the outdoors, indoors with this convenient door side cold water port.



Hathaway's Intra Vac central vacuum system includes a front storage compartment port for easy clean-ups.



All fifth wheels are prewired for easy wireless observation camera installation at the dealership for safe, convenient rear viewing when backing up and on the road.



All Cedar Creeks are equipped with an efficient, on-demand, tankless water heater that uses 50% less propane than a standard RV water heater.



Aluminum skirting is wrapped all the way to the frame.



MorRyde "Step Above"® 5 tier entry step provides secure footing as you enter our extra wide 32" entry door.



Removable "Soft Top" vinyl storm doors allow light and visibility without losing cooling or heating.



Cedar Creek's original "Z-frame" chassis design allows over 100 cu. ft. of front storage compartment space. It's like having a built-in storage shed!



A&E metal wrapped awning with LED night light strip.



Another feature that we've taken from residential construction is our super quiet "HP" (High performance) 15,000 BTU air conditioning system, which includes a larger compressor and cold air returns! This means 30% more air is being forced into the coach than a standard 15,000 BTU air conditioner.



These day shades with blackout roller shades offer the best of both worlds. They're actually two shades in one – a night fabric lowers completely for privacy, or can be retracted to the top to reveal a full length day shade. Both day and night shades can be set in any position and are designed with speed and length controls for privacy or a scenic view.

CONSIDER THE OPTIONAL MULTI-FUNCTION CHOTTOMAN

Is it an ottoman or a chair?
You decide.



CEDAR CREEK CONSTRUCTION – FOR YEARS OF CAREFREE CAMPING

Side Walls R-Value (R-11*)

- Handmade 2" x 2" - 16" (or less) on center sidewalls with individually fastened custom "L" brackets combined with 3M® Silaprene adhesives for a stronger frame without welding or lamination. (475 PSI at 2" per minute)

- "True" High Gloss Classic Gelcoat on all exteriors - the best of the best in fiberglass. Don't accept "hi-gloss fiberglass" or "gel-coated" sidewalls - only True gelcoat stands the test of time.
- 3M® Silaprene Bonded Sidewalls – resilient, grows stronger with age. Also has outstanding resistance to UV, heat, cold, moisture, oils, gasoline, highway chemicals, and creates a bond that cannot delaminate with time

- Sidewalls are bolted to the floor with 5/16" x 6-1/2" carriage bolts at each outrigger
- Glued R-7 fiberglass insulation expanded to its full capacity within the sidewall frame
- Slide rooms insulated on all five sides

Floors R-Value (R-45*)

- 3" Aluminum frame floor with in-floor heat ducting and radius "L" brackets combined with 3M® Silaprene adhesives
- Cambered 10" + 2" I-beam "Z" frame with large support outriggers and full length welds

- 5/8" Tongue and groove plywood floor is attached to the aluminum frame with Silaprene and screwed every 6"
- Fully enclosed 4' x 8' ABS removable panels for easier access into the underbelly. We use wood stringers to attach with no holes in the frame
- Triple layer insulation enhances the protective values of plywood, vinyl, carpet, carpet pads, tank heaters, etc.
- 12 Volt tank heaters on all tanks
- Radiant shield insulation – 97% reflectivity, 3% emission
- Water lines are protected inside the floor and away from exterior walls

Roof R-Value (R-40*)

- Full length 3/8" wood roof decking for a full walk-on roof
- Triple layer insulation
- Aluminum Truss Rafters on 16" centers with 8" wide circular air duct. Circular ducting combined with our high performance (bigger compressor) air conditioner gives Cedar Creek a 30% increase in air conditioning performance over our competitors in hotter climates
- Optional second Whisper Quiet roof mount air conditioner (Bedroom)
- Two ply – Tuff Ply rubber roof membrane
- Roof is bolted to sidewall with 5/16" x 3-1/2" carriage bolts
- Radiant shield insulation extends around to the bottom of the front cap – R Value 40, 97% reflectivity, 3% emission
- Attic Vent
- Equivalent R-Value



Cedar Creek
HATHAWAY EDITION

View our construction video, or read the "Back to Basics" construction booklet at: www.forestriverinc.com/cedarcreek



Cold room tested to 0°F with standard insulation and heating pads.

SUPERIOR PERFORMANCE

DEXTER AXLE Dexter® Axles/Brakes Suspension
For Performance and Safety

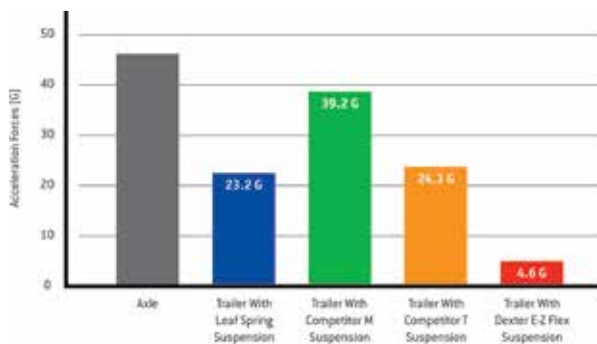
- Nev-R-Adjust® Brakes are always properly adjusted for improved stopping power in half the distance
- E-Z Flex® rubber equalization system with 1/2" link plates and eight grease zerks per side
- Heavy duty axles with bronze bushings in shackles (No plastic bushings like our competitors)
- 16" Eight lug, ST, "G" rated, 14 ply tires on 7000 lb. Dexter® Axles
- 16" Eight lug, ST, "H" rated, 16 ply tires on 8000 lb. Dexter® Axles



Dexter® Nev-R-Adjust®
Brakes Standard



Dexter® E-Z Flex®
Suspension Standard



Compare acceleration forces experienced by an axle and trailer while traveling over railroad tracks at 30 MPH. The E-Z Flex® System provides up to an 80% reduction in forces on the trailer frame vs. a standard equalizer. E-Z Flex® significantly outperforms all other competitors in the same road test for a smoother, more protective ride for your trailer and cargo.



Residential Glasswool Insulation,
designed by nature.



Cedar Creek's famous residential
All-aluminum Super-structure
(Roof, sidewalls, and floor) on
16" centers or less.



3" Aluminum floor studs, heat duct
and 5/8" tongue and groove
plywood floor.



Aluminum window frames.



R-38 Radiant shield Thermo-foil wrap through ceilings, underbellies and under front caps.



High-Performance Quiet Zone™
Ducted Air System with a 15,000-BTU
HP air conditioner, a residential-style
return air duct system and Comfort
Control Center creates a dynamic
combination for powerful results.
It's the most efficient AC system in
existence with both the industry's
highest-performance AC and the
industry's lowest power draw, with
second Bedroom air conditioner too!



ALUMINUM FRAME CONSTRUCTION

State-of-the-art construction techniques along with top grade building components give Cedar Creek its reputation for long-lasting quality.

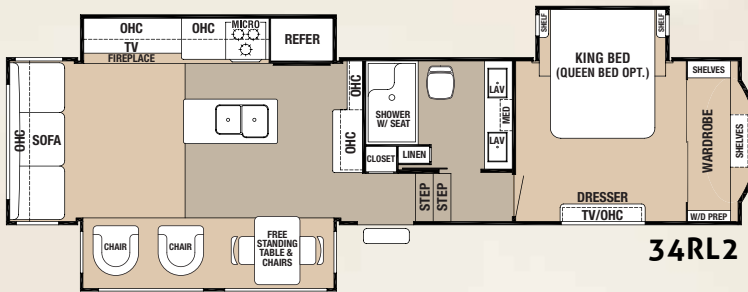
- Cedar Creek's famous all aluminum super-structure
- Bonded True High Gloss Classic™ Pearl gelcoat exteriors
- 100% Hehr automotive frameless windows
- Optional Level-Up 6-point hydraulic leveling system
- The Dexter® difference - safety and performance package
- Wired for wireless rear camera
- Soft top vinyl storm doors
- Remote control for slides, front hydraulic jacks, awning and security lights
- Black metal wrapped A&E awnings with LED night light strip
- Radiant Shield thermo-foil R-38 value
- Heating pads on all tanks



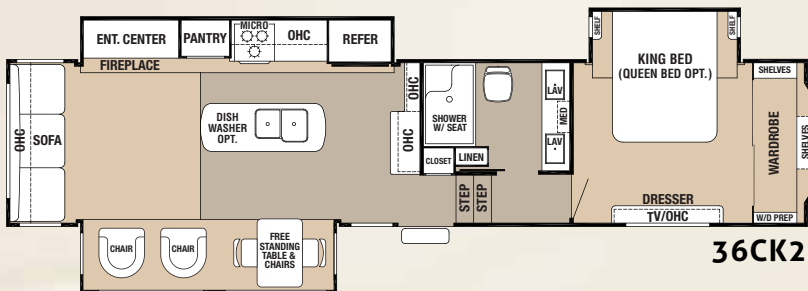
True High Gloss Classic fiberglass gelcoat
exteriors and end walls. Truly the best of
the best in fiberglass. Accept no imitations.



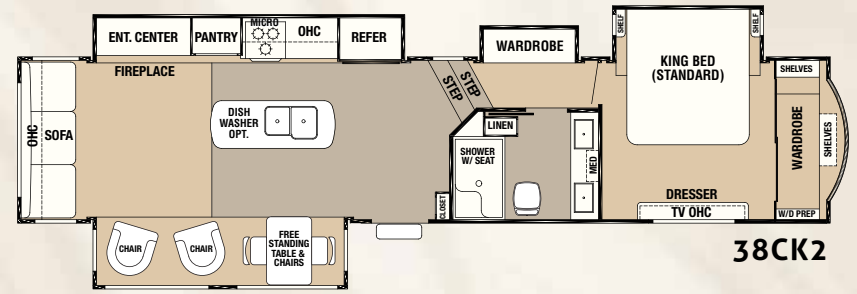
34RE



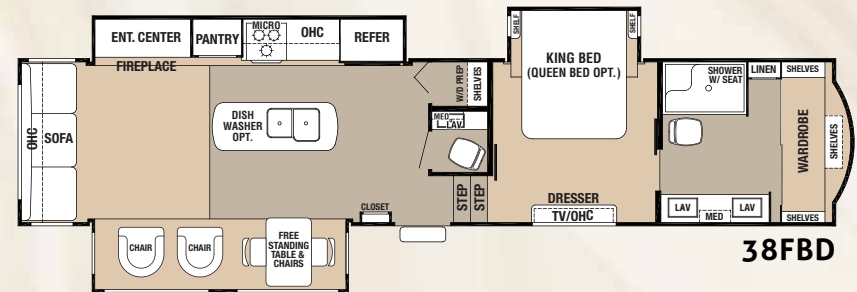
34RL2



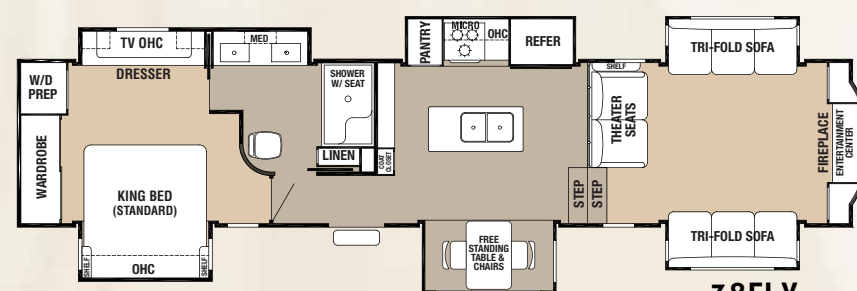
36CK2



38CK2



38FBD



38FLX

SPECIFICATIONS

MODEL	34RE	34RL2	36CK2	38CK2	38FBD	38FLX
GVWR	15853 lb	16270 lb	16525 lb	18000 lb	18000 lb	18000 lb
Hitch Weight	1853 lb	2270 lb	2525 lb	2455 lb	2295 lb	2756 lb
UVW	11955 lb	12009 lb	13075 lb	11095 lb	13765 lb	14510 lb
CCC	3898 lb	4733 lb	3391 lb	4391 lb	4176 lb	3431 lb
Exterior Length	37'	37' 11"	40'7"	41'6"	41'8"	41'11"
Exterior Height	13'	13'	13'	13'	13'	13'
Exterior Width	96"	96"	96"	96"	96"	96"
Fresh Water*	57 gal	57 gal	57 gal	57 gal	57 gal	57 gal
Gray Water	80 gal	80 gal	80 gal	80 gal	80 gal	80 gal
Black Water	40 gal	40 gal	40 gal	40 gal	80 gal	40 gal
Awning Size	16 ft	16 ft	18 ft	18 ft	18 ft	21 ft

*On-Demand, Tankless Water Heater

GVWR (Gross Vehicle Weight Rating) - is the maximum permissible weight of the unit when fully loaded. It includes all weights, inclusive of all fluids, cargo, optional equipment and accessories. For safety and product performance do NOT exceed the GVWR.

GAWR (Gross Axle Weight Rating) - is the maximum permissible weight, including cargo, fluids, optional equipment and accessories that can be safely supported by a combination of all axles.

UVW (Unloaded Vehicle Weight)* - is the typical weight of the unit as manufactured at the factory. It includes all weight at the unit's axle(s) and tongue or pin and LP Gas. The UVW does not include cargo, fresh potable water, additional optional equipment or dealer installed accessories.

*Estimated Average based on standard build optional equipment.

CCC (Cargo Carrying Capacity)** - is the amount of weight available for fresh potable water, cargo, additional optional equipment and accessories. CCC is equal to GVWR minus UVW. Available CCC should accommodate fresh potable water (8.3 lbs per gallon). Before filling the fresh water tank, empty the black and gray tanks to provide for more cargo capacity.

**Estimated average based on standard build optional equipment.

Each Forest River RV is weighed at the manufacturing facility prior to shipping. A label identifying the unloaded vehicle weight of the actual unit and the cargo carrying capacity is applied to every Forest River RV prior to leaving our facilities. The load capacity of your unit is designated by weight, not by volume, so you cannot necessarily use all available space when loading your unit.

FEATURES AND OPTIONS

HATHAWAY EDITION PACKAGE

- Cedar Creek's famous all aluminum superstructure on 16" centers or less
- Front and rear "True" gelcoat, with front painted cap
- Jensen Home Theater System includes: 55" LED TV, swing arm, bracket, CD/DVD player, AM/FM stereo, weather band and J-Control app for your smart devices. Apple licensing is also included
- 12V. sound bar with 2 mid-tone speakers, 2 tweeters, 2 sub-woofers and 2 outside speakers
- Honey glazed, high sheen, European Beech cabinetry with hidden hinges
- 36" Fireplace with remote and hidden storage
- MorRyde® 5 tier, "Step Above" entry steps with easy lifting mount, extra wide, 32" friction hinge, entry door and "Soft Top" storm door
- LED Edison lighting fixtures with 4" LED ceiling lights
- 88" La-Z-Boy® sofa and recliner set with lifetime warranty on parts. (88' sofa N/A 34RE, 38FLX)
- Solid surface LG® counter-tops with oversized 60/40 stainless steel sinks
- Self-closing drawer guides with silverware organizer
- Full residential pantry with 7 full extension drawers (N/A 34RE, 34RL2)
- Shaw® R2X stain and soil resistant carpeting in all living room and bedroom areas with rebounded carpet pad
- Jack and Jill bathroom with double bowl counter, 40% larger than a standard bath, with linen closet (34RL2, 36CK2, 38CK2, 38FBD, 38FLX)
- Serta® king mattress with full size head board
- Congoleum® Carefree™ designer flooring, throughout except in slides and bedroom
- One-piece ceramic backsplash

- Remote control for awning, slides, exterior lighting and front jacks
- On Demand hot water heater
- Day shades and night black out shades

EXTERIOR FEATURES

- "True" pearl gelcoat exterior – truly the best of the best in gelcoat exteriors. 40% thicker and keeps it's high gloss longer than our competitors less expensive exteriors
- **DEXTER® Safety and Performance Package**
 - Nev-R-Adjust® brakes are always properly adjusted for improved stopping power in half the distance
 - E-Z Flex™ rubber equalization system with 1/2" link plates and (8) grease zerks per side
 - E-Z Lube®, heavy duty axles with bronze bushings in shackles
- 16" 8-lug, ST, "G" rated tires on 7,000 lb. Dexter® axles, "H" rated tires on 8,000 lb. Dexter® Axles
- Prepped for wireless observation system
- 100% Hehr® automotive frameless windows with tinted safety glass – all windows open!
- 19 Cu. ft. stainless steel electric refrigerator with inverter and ice maker
- Central vacuum system with automatic dustpan and front storage connection
- Satellite pre-wire from docking station to both the living room and the bedroom
- Thicker 1-1/4" compartment doors with slam door latches and dedicated key lock
- Black metal wrapped electric awning with LED night strip
- 50 Amp service
- Solid state 55 Amp power converter
- Central docking station
- Ducted 15,000 BTU Duo-Therm "HP" (High performance) air conditioner with larger compressor, circular motion, 8" ductwork and cold air returns. Larger compressor forces 30% more air into the coach - the most powerful air conditioner in RVs today.



- Braced and wired for second air conditioner
- Rear ladder
- Radius wrapped bottom metal skirt to the frame
- New door side cold water port

LIVING ROOM

- Ceiling fan
- (1) Barstool (N/A 34RE, 38FLX)
- Sculpted solid hardwood slide room fascia in living room

KITCHEN FEATURES

- Create-A-Breeze Fantastic fan with thermostat and rain sensor
- Stainless steel 30" over the range microwave vented to the outside
- Recessed stainless steel large oven with Piezo igniter, sealed burners and glass cover
- Large crown and cove molding throughout
- Free-standing table with hidden table leaf extension, (2) standard chairs and (2) folding chairs

MISCELLANEOUS FEATURES

- 12V. battery disconnect
- Dometic comfort control center with dual zone control for heating and cooling
- Washer/dryer prep
- LP gas/carbon monoxide detector
- Smoke detector
- Suburban 40,000 BTU furnaces
- One year of Coach Net roadside assistance
- Membership to the Forest River Owner's Group (F.R.O.G.)

BEDROOM FEATURES

- 32" LED Jensen television
- Ceiling mounted overhead reading lights with individual switches
- Radius ceilings with a full 6'9" of bedroom height
- Extra wide mirrored closet doors
- Walk-in closet

OPTIONS

- Level-Up hydraulic 6-point leveling system
- Second 15,000 BTU ducted "Whisper Quiet" Penguin air conditioner
- Third 15,000 BTU ducted "Whisper Quiet" Penguin air conditioner with power management system
- 13 Cu. ft. side-by-side gas/electric refrigerator with raised wood fronts
- 20 Cu. ft. stainless steel French door electric refrigerator with pull-out lower freezer compartment, inverter and ice maker (N/A 34RL2)
- 30" Stainless steel convection oven/microwave
- Dishwasher (N/A 34RE, 34RL2, 38FLX)
- Upgraded Serta® "Heron Valley" luxury queen and king mattress
- Awning toppers with metal wraps
- 12' Electric slide room awning with metal wrap (N/A 38FLX)
- 1-1/4" Bike rack receiver hitch
- Create-A-Breeze Fantastic fans with thermostat and rain sensor in the bedroom area
- Matching Chottoman with interior storage (Chair or ottoman - you decide)
- Full body paint - Classic, Midnight Mist, Kristal
- Heat pump on main air conditioner
- Theater seating IPO recliners (No charge)
- Power theater seating IPO recliners
- Vinyl flooring throughout
- LP generator prep
- Onan 5.5 kw Marquis Gold LP generator
- Cadet self-regulating bedroom wall heater (N/A 38FLX)
- Splendide® combination washer/dryer
- Splendide® stackable washer/dryer
- Wireless rear observation camera
- Dual pane windows
- Trail Air™ air ride hitch coupler
- 50 Amp cord reel
- Solar prep
- 200W Solar panels
- 12 Gal. gas/electric water heater
- Carpet with rebond carpet pad in living room

DECOR



SANDSTONE



GOLD DUST



RAVEN



DOMINO

Cedar Creek
HATHAWAY EDITION



KRISTAL



MIDNIGHT MIST



CLASSIC

CEDAR CREEK FULL BODY PAINT

Full Body Paint, adorned with Cedar Creek graphics, will turn heads wherever you travel. These bold new exterior options are offered along with our Standard Graphics.



PRE-DELIVERY INSPECTION FACILITY

20,000 square feet of quality assurance. The bare essentials for a premium product. This state-of-the-art facility gives immediate daily feedback to production for quality assurance in every unit built.

FREE MEMBERSHIP
to Forest River Owners' Group

www.forestriverfrog.com



24/7 EMERGENCY ROADSIDE ASSISTANCE

For a worry-free ownership experience Forest River includes one year of Coach-Net RV Technical & Roadside Assistance with each RV purchase. Whether new to the RV lifestyle or an experienced RV enthusiast, Forest River owners have 24/7 access to technical, operational and emergency road service coverage throughout the US & Canada. Coach-Net's fast, dependable service is just a phone call away.

Coach-Net[®]

RV Technical & Roadside Assistance



Learn More

Scan this barcode using a QR Reader on your smart phone to learn more about Forest River.



A Berkshire Hathaway company.

CUSTOMER SATISFACTION



www.ForestRiverBuyLocal.com

Cedar Creek

HATHAWAY EDITION

The Smart Choice for the Experienced RV'er

FOREST RIVER INC. ■ CEDAR CREEK DIVISION

501 Hawpatch Road ■ Topeka, IN 46571

Phone : 260-593-2404 ■ Fax: 260-593-2447

Parts & Service ■ Phone: 260-593-4000

On The Web at: www.forestriverinc.com/cedarcreek

All information contained in this brochure is believed to be accurate at the time of publication. However, during the model year, it may be necessary to make revisions and Forest River, Inc., reserves the right to make all such changes without notice, including prices, colors, materials, equipment and specifications as well as the addition of new models and the discontinuance of models shown in this brochure. Therefore, please consult with your Forest River dealer and confirm the existence of any materials, design or specifications that are material to your purchase decision. ©2017 Cedar Creek, a Division of Forest River, Inc., a Berkshire Hathaway company. All Rights Reserved. 11/17

YOUR CEDAR CREEK DEALER