

ROCKWOOD
PROVIDING OUTDOOR FUN SINCE
1974



ROCKWOOD

GEO PRO

ROCKWOOD GEO PRO



GEO PRO

Geo Pro

MAKING YOUR INVESTMENT GO A LONG WAY. The Rockwood Geo Pro line of travel trailers are for those campers that value being environmentally conscious and have chosen to drive today's more fuel efficient "crossover" vehicles and smaller SUV's. With floor plans that weigh within the towing capacity of these type of vehicles, the Geo Pro combines a traditional approach with modern amenities to enhance your camping experience.

In step with Rockwood's tradition of providing unsurpassed value and functionality, most Geo Pro models have a 78" interior height (NA 12RK) from the front to rear, optional roof mount 13,500 BTU low profile A/C and a permanent awning for quick and easy set up.

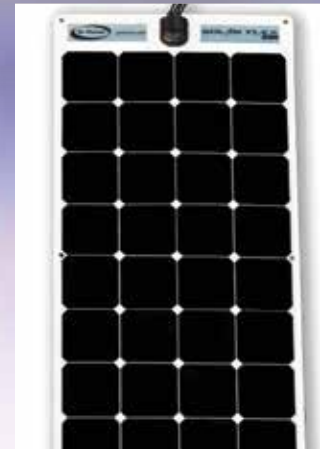
The Geo Pro has gone to the next level with its refreshing two tone fiberglass exterior, interior and exterior LED lights and a WiFi Ranger WiFi booster which boost your WiFi and gives you a secure connection. There's also an available roof mount flexible solar panel for dry camping. Geo Pro... with its stylish interior and great features is an exciting way to go camping pulling it with the vehicle you drive everyday!



MODEL NO.
G17RK



MODEL NO.
G17RK



Optional 100W Roof-mount Solar Panel (N/A G12RK)



Standard WiFi Ranger WiFi Booster



Optional Tongue Mount Bike Rack



MODEL NO.
G19FD



MODEL NO.
G19FD

STANDARD PACKAGE A (N/A I2RK)

| | |
|-----------------------------------|----|
| Roller Shades | S |
| AM/FM Stereo w/ Bluetooth and USB | S |
| Multidirectional TV Antenna | S |
| Gas/Electric Water Heater | S |
| Outside Speaker | S |
| Roof Mount Solar Prep | S |
| Manual Awning (N/A I2RK) | S* |
| 20,000 BTU Furnace | S |
| Coleman Stove/Grill Combo | S |
| 2- 20# LP Bottles | S |
| Microwave | S |
| Polished Alloy Wheels | S |
| Tinted Bonded Frameless Windows | S |
| Spare Tire | S |
| Heated Mattress | S |

STANDARD PACKAGE B (G12RK Only)

| | |
|-----------------------------------|---|
| AM/FM Stereo w/ Bluetooth and USB | S |
| Multidirectional TV Antenna | S |
| Outside Speaker | S |
| Coleman Stove/Grill Combo | S |
| Heated Mattress | S |

STANDARDS

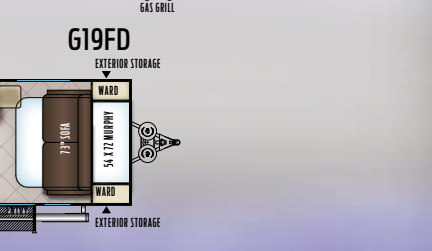
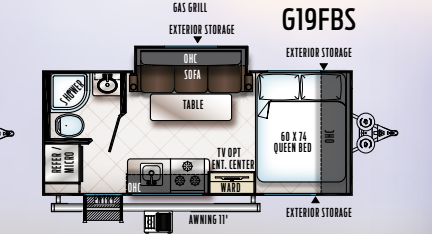
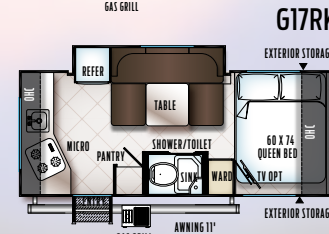
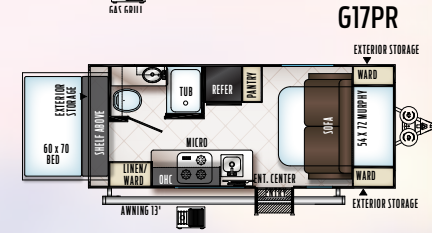
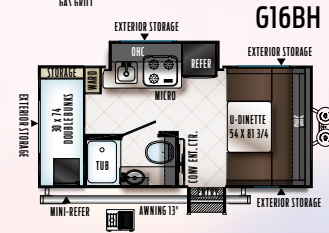
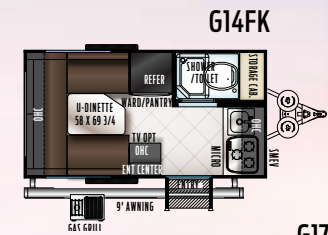
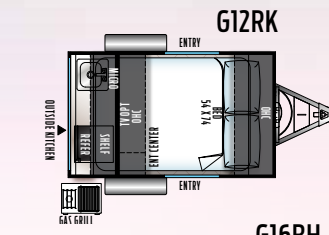
| | |
|--|-------|
| Aluminum Cage Dinette Base (Dinette models) | S* |
| 6 Sided Aluminum Cage Construction | S |
| Vacuum Laminated Roof and Walls | S |
| 4 Frame Mounted Stabilizer Jacks (2 on G12RK) | S |
| MORryde Entry Steps (N/A G12RK) | S* |
| Torsion Axle, Rubber-Ryde Suspension | S |
| Nitro Filled Radial Tires | S |
| Prewire for Back Up Camera (N/A G12RK) | S* |
| Outside Speaker | S |
| Roof and Ground Solar Prewire (Ground Only on G12RK) | S |
| Magnetic Baggage Door Catches | S |
| Wifi Ranger* Wifi Booster | S |
| Maxxair® Ventilation Fan and Vent Cover (Opt G12RK, N/A G14FK & G17RK) | S*/O* |
| Power Vent Fan (G14FK & G17RK Only) | S* |
| Recessed Cooktop W/ Flush Mount Cover (N/A E12RK) | S* |
| Microwave Oven | S |
| Auto Gas/Elec. Refrigerator (N/A G12RK) | S |

Water Heater w/ Interior Gas and

| | |
|---|----|
| Electric Switches (N/A G12RK) | S* |
| Manual Awning (N/A G12RK) | S* |
| Black Tank Flush (N/A G12RK) | S* |
| Spare Tire W/ Carrier | S |
| Water-Pur Filtration System (N/A G12RK) | S |

OPTIONS

| | |
|---|----|
| 13,500 Low Profile Roof A/C | 0 |
| Chill Chaser Heat Strip For A/C (G12RK only) | O* |
| CSA | 0 |
| Mounted 22" 12V LCD tv w/ DVD player | 0 |
| Gas Oven (G19FBS & G19FD) | O* |
| Power Awning With Adjustable Rain Dump and LED Lighting (N/A G12RK) | O* |
| Convection Microwave (N/A G12RK) | 0 |
| Flexible Roof Mount Solar Panel (N/A G12RK) | O* |
| Pro Rac Mounting Bars (G12RK Only) | O* |
| Pro Rac Kayak, Bike, Tie Downs, Etc. Accessories (G12RK Only) | O* |
| Tongue Mount Bike Rack | 0 |
| 15" Mud Rover Radial Tires | 0 |



| MODEL | G12RK | G14FK | G16BH | G17PR | G17RK | G19FBS | G19FD |
|--------------------------|--------|--------|--------|--------|--------|--------|--------|
| Unloaded Vehicle Weight* | 1133 | 2022 | 2874 | 3161 | 2932 | 2962 | 2829 |
| Hitch Weight | 153 | 277 | 420 | 452 | 394 | 360 | 390 |
| Axle Weight | 961 | 1707 | 2416 | 2671 | 2500 | 2564 | 2401 |
| Cargo Capacity | 820 | 895 | 1046 | 791 | 962 | 898 | 1061 |
| Total Length | 11' 2" | 14' 1" | 18' 4" | 20' | 20' | 20' | 20' |
| Width | 76" | 76" | 88" | 88" | 88" | 88" | 88" |
| Height w/ AC | 90" | 112" | 115" | 115" | 115" | 115" | 115" |
| Fresh Water Capacity | 20 gal | 26 gal | 37 gal | 37 gal | 37 gal | 37 gal | 37 gal |
| Grey Water Capacity | 6 gal | 12 gal | 30 gal | 30 gal | 60 gal | 30 gal | 30 gal |
| Black Water Capacity | NA | 12 gal | 30 gal | 30 gal | 30 gal | 30 gal | 30 gal |

The Unloaded Vehicle Weight (UVW) listed represents the weight of one trailer with that model's standard equipment including the content of specified option packages. * See back cover for further specification definitions.

S = STANDARD, O = OPTIONAL, * = SELECTED MODELS

STANDARDS & OPTIONS ARE SUBJECT TO CHANGE.

FREE MEMBERSHIP
to Forest River Owners' Group

www.forestriverfrog.com



CUSTOMER SATISFACTION



www.ForestRiverBuyLocal.com



PRE-DELIVERY INSPECTION FACILITY

20,000 square feet of quality assurance. The bare essentials for a premium product. This state-of-the-art facility gives immediate daily feedback to production for quality assurance in every unit built.

24/7 EMERGENCY ROADSIDE ASSISTANCE

For a worry-free ownership experience

Forest River includes one

year of Coach-Net RV Technical & Roadside Assistance with each RV purchase. Whether new to the RV lifestyle or an experienced RV enthusiast, Forest River owners have 24/7 access to technical, operational and emergency road service coverage throughout the US & Canada.

Coach-Net's fast, dependable service is just a phone call away.

Coach-Net[®]
RV Technical & Roadside Assistance



Rockwood Freedom, ESP, Premier, High Wall, Hard Side Campers



Rockwood Mini Lites & Roos



Rockwood Ultra Lite Travel Trailers & Fifth Wheels



Rockwood Signature Ultra Lite Travel Trailers, Fifth Wheels & Windjammers

Specification Definitions

GVWR (Gross Vehicle Weight Rating) - is the maximum permissible weight of the unit when fully loaded. It includes all weights, inclusive of all fluids, cargo, optional equipment and accessories. For safety and product performance do NOT exceed the GVWR.

GAWR (Gross Axle Weight Rating) - is the maximum permissible weight, including cargo, fluids, optional equipment and accessories that can be safely supported by a combination of all axles.

UVW (Unloaded Vehicle Weight)** - is the typical weight of the unit as manufactured at the factory. It includes all weight at the unit's axle(s) and tongue or pin and LP Gas. The UVW does not include cargo, fresh potable water, additional optional equipment or dealer installed accessories.

*Estimated average based on standard build optional equipment.

CCC (Cargo Carrying Capacity)** - is the amount of weight available for fresh potable water, cargo, additional optional equipment and accessories. CCC is equal to GVWR minus UVW. Available CCC should accommodate fresh potable water (8.3 lbs per gallon). Before filling the fresh water tank, empty the black and gray tanks to provide for more cargo capacity.

**Estimated average based on standard build optional equipment

Each Forest River RV is weighed at the manufacturing facility prior to shipping. A label identifying the unloaded vehicle weight of the actual unit and the cargo carrying capacity is applied to every Forest River RV prior to leaving our facilities.

The load capacity of your unit is designated by weight, not by volume, so you cannot necessarily use all available space when loading your unit.

ROCKWOOD
WARRANTY

For details on Rockwood's complete warranty program, see your Rockwood dealer. When it comes to backing products with the same quality and commitment it does when it begins the manufacturing process, the only name you have to remember when you're looking for a recreational vehicle is Rockwood. Rockwood offers the following additional limited warranties to the original purchasers. Consult written warranty for details.

1. Twelve-year vinyl roof warranty,
2. Two-year fiberglass warranty,
3. Ten-year Torflex[®] axle warranty,
4. One-year bumper to bumper warranty,
5. Five-year tent warranty



Learn More
Scan this barcode using a QR Reader on your smart phone to learn more about Forest River.



A Berkshire Hathaway company.



201 WEST ELM MILLERSBURG, IN 46543 WWW.FORESTRIVERINC.COM/ROCKWOOD 574.642.2640

YOUR ROCKWOOD DEALER

All information contained in this brochure is believed to be accurate at the time of publication. However, during the model year, it may be necessary to make revisions and Forest River, Inc., reserves the right to make all such changes without notice, including prices, colors, materials, equipment and specifications as well as the addition of new models and the discontinuance of models shown in this brochure. Therefore, please consult with your Forest River, Inc., dealer and confirm the existence of any materials, design or specifications that are material to your purchase decision. Litho. U.S.A. FOR 1478 W: 2018.03.07