

WILDWOOD LODGE & DLX

Lodge DLX

2018 DESTINATION TRAILERS
THERE'S SOMETHING OUT THERE.





Number one selling destination trailer

**DLX
39FDEN**



**BEDROOM
WARDROBE**



BEDROOM

**TIFFANY
LEATHER**

SHOWN WITH STANDARD
BEAUFLO® PLANK WOOD
LINOLEUM, CUSTOMER-
SUPPLIED TV



BATHROOM



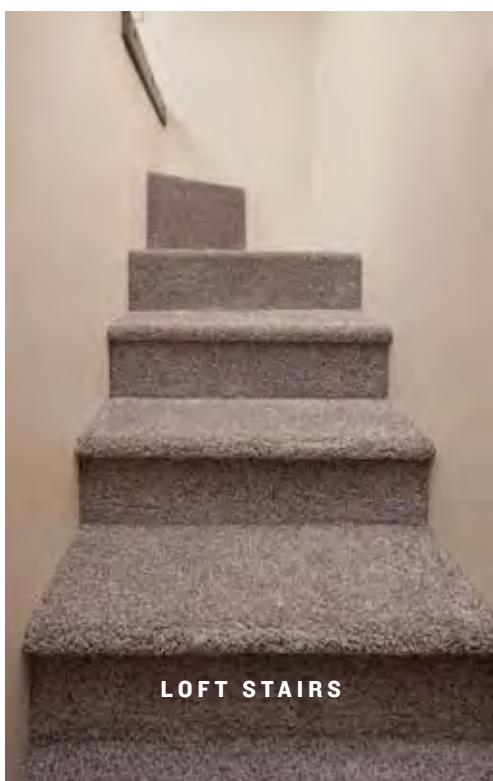
KITCHEN

**LODGE
4092BFL**

Loft favorite for kids

**TIFFANY
LEATHER**

SHOWN WITH STANDARD
BEAUFLO[®] PLANK WOOD
LINOLEUM, CUSTOMER-
SUPPLIED TV



**GRAND
LODGE
42DL**

Spacious and comfortable

**MINK
CLOTH**

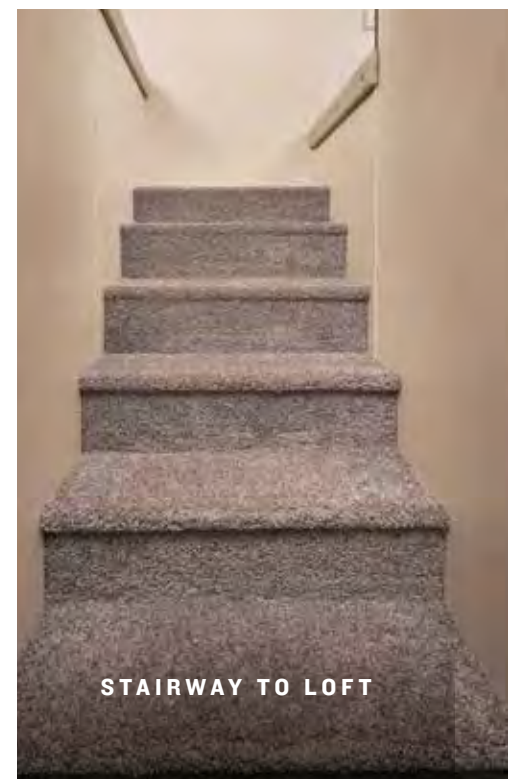
SHOWN WITH STANDARD
BEAUFLO[®] PLANK WOOD
LINOLEUM



LOFT BEDROOM ONE



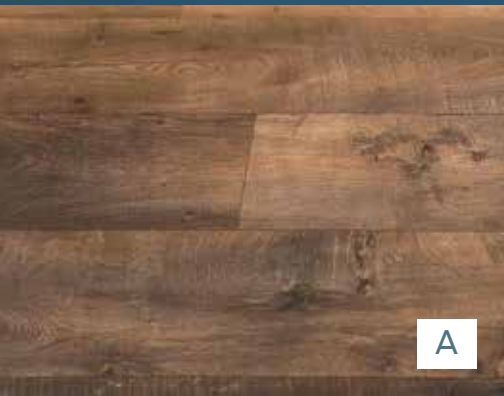
LOFT BEDROOM TWO



STAIRWAY TO LOFT



BEDROOM



A



B



C



D



E



F



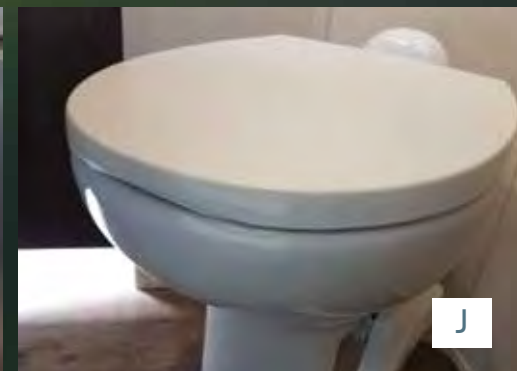
G



H



I



J

POPULAR FEATURES

DLX

- A. Beauflor® Plank Wood Linoleum
- B. New Accent Glass on Cabinets
- C. Whirlpool 1.6 cuft oversized microwave
- D. Thomas Payne collection Hide-A-Bed sofa
- E. Patio Door

- F. 5/8" Tongue and Groove Floor Decking
- G. High Rise Spring Faucet
- H. Living Room Ceiling Fan
- I. Recessed Stove With Glass Stove

- J. Porcelain Foot Flush Toilet Cover (Optional in DLX only)



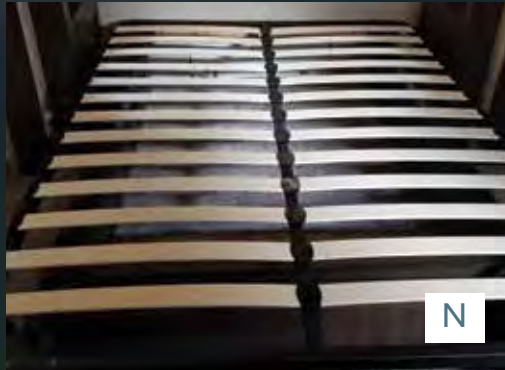
M



K



L



N



O



P



Q



R



S



T

UPGRADES ON THE
Lodge

- K. Free Standing Dinette
- L. Denver® Mattress
- M. 8 Foot Ceilings
- N. Comfort FlexBed Frame

- O. Double Basin Kitchen Sink
- P. 3-Burner Range with 20" x 20" Oven Door
- Q. Fantastic™ Fan
- R. 20 Gallon Electric Water Heater

- S. Shaw Stain Resistant Carpet
- T. Electric Fireplace (Most Lodge Models)

Superior Construction

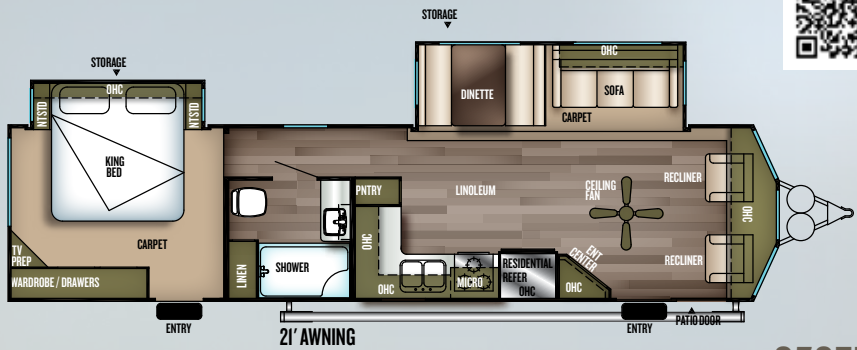
- 1 Radius triple entry steps
- 2 102" exterior width for increased living space (96" on DLX Models)
- 3 Tinted safety glass windows
- 4 Standard patio door (3 window door on some models)
- 5 12" powder coated I-beam (Most models)
- 6 5/8" tongue and groove plywood flooring
- 7 Shaw® stain resistant Carpet with padding
- 8 Radius fender skirt
- 9 2" wall studs 16" on center
- 10 15K BTU A/C (13.5K on DLX)
- 11 Seamless one-piece roof (12 yr. manufacturer defect warranty)
- 12 3/8" roof decking (Full walk-on roof)
- 13 R-7 fiberglass insulation throughout
- 14 Dual 30 lb. bottle cover w/ easy access
- 15 5" truss roof rafters 16" on center
- 16 Aluminum siding (Fiberglass opt.)
- 17 84" interior height DLX (96" interior height Lodge)



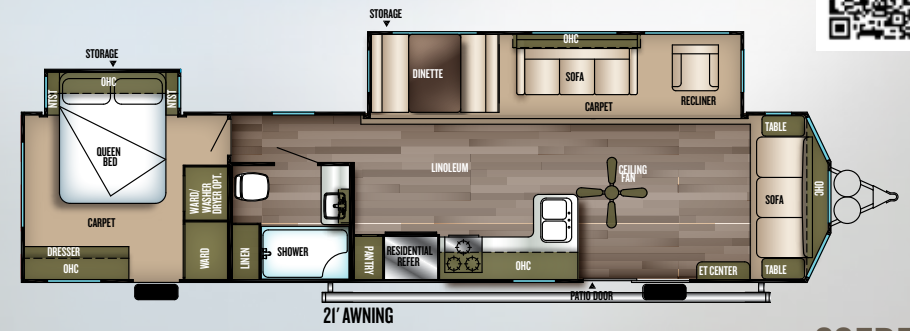


AMISH CRAFTSMANSHIP

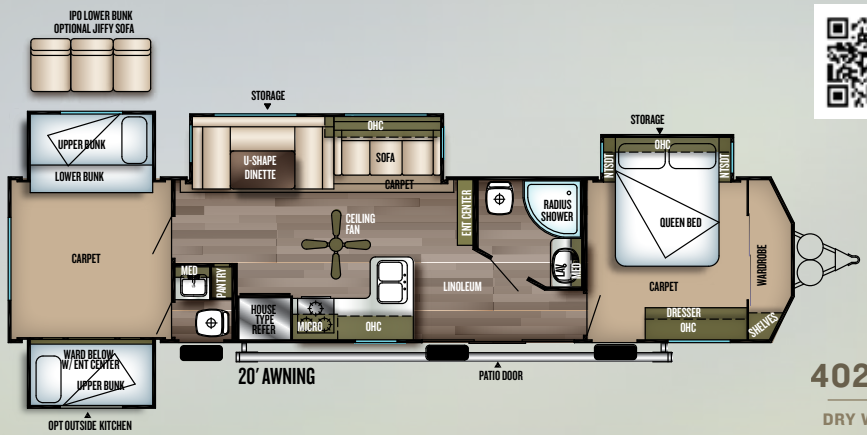
Only the finest attention to detail goes into each Wildwood. Our skilled craftsmen have many years of experience building beautifully finished cabinetry. The solid nature of our well-designed woodwork is another reason why Wildwood is one of the best built RVs in the industry.



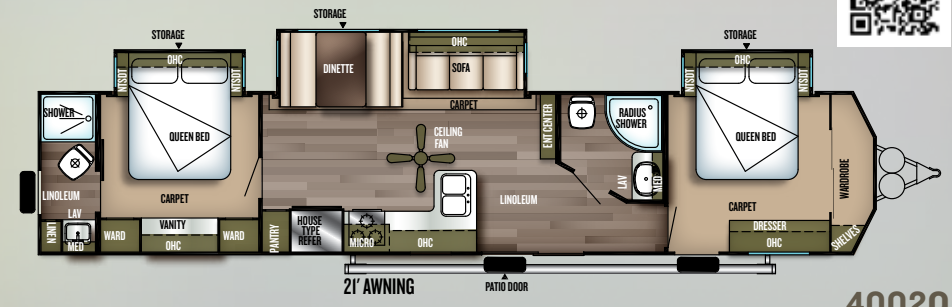
353FLFB
 DRY WEIGHT
 8,679



39FDEN
 DRY WEIGHT
 9,784



402QBQ
 DRY WEIGHT
 10,644



4002Q
 DRY WEIGHT
 10,299

	353FLFB	39FDEN	402QBQ	4002Q
HITCH WEIGHT (LBS.)	1290	1362	1075	1260
AXLE WEIGHT (LBS.)	7330	8363	9510	8980
UVW (LBS.)	8679	9784	10644	10299
CARGO CARRYING CAPACITY (LBS.)	2811	1778	2431	1161
EXTERIOR LENGTH (LBS.)	38' 6"	40' 10"	40' 8"	43' 5"
EXTERIOR HEIGHT (LBS.)	12' 4"	12' 4"	12' 3"	12' 3"
FRESH WATER (GAL.)	39	39	39	39
BLACK WATER (GAL.)	40	40	90	80
GREY WATER (GAL.)	50	40	80	90
TIRE SIZE (IN.)	15"	15"	16"	15"

WILDWOOD

Floorplan Key

Pillows and blankets shown on beds and bunks are for demonstration purposes only and do not come with your new coach.

- OHC
- OVERHEAD CABINET
- WARD
- WARDROBE
- MICRO
- MICROWAVE
- LAV
- BATHROOM SINK

DLX Standards & Options



COMFORT & CONVENIENCE

- 84" interior height with cathedral ceilings
- Black framed tinted safety glass windows
- Powered self supporting slide rooms
- Modern roller shades w/ autostop (Living room, bed)
- Triple sealed slide outs
- Water heater by-pass
- 6-gallon quick recovery DSI gas/electric water heater
- Ducted Dometic® 13,500 BTU central air conditioner w/ quick cool feature
- In-floor ducted heat w/ 35K BTU furnace
- Stain resistant carpet with padding
- Flush-floor hydraulic slide rooms with manual override (Most models)
- Systems monitor panel
- 6' 2" Tall slide rooms
- Solid wood drawer fronts with ball bearing drawer guides
- Beauflor® vinyl slip resistant flooring

KITCHEN

- Extra large overhead cabinets w/hidden hinges
- Mortise and tenon shaker style hardwood cabinet doors
- 16 cu. ft. residential refrigerator
- 12-volt power range hood w/ light
- Whirlpool® 1.7 cu. ft. oversized microwave
- One piece, water resistant, designer backsplash
- Stainless double basin residential style kitchen sink
- Built in knife holder behind stove (Some models)

- High definition countertops
- 3 burner piezo ignition range oven w/ glass cover
- High rise spring faucet at kitchen sink
- Kitchen waste basket (Some models)
- Pantry with shelves

LIVING ROOM

- NEW Bluetooth sound bar w/ TV hook-up
- Thomas Payne® recliners (Per floorplan)
- Thomas Payne® tri-fold sofa (Per floorplan)
- Cathedral ceiling w/ ceiling fan
- Digital TV antenna w/ booster
- Cable and satellite ready
- Extra large picture window at dinette
- Extra large dinette for more comfortable dining and sleeping
- Decorative lights in slide-out

BEDROOM

- NEW modern roller shade window treatment (Limited time option)
- "Teddy bear" bunk mattresses (Per floorplan)
- Denver 9" pillowtop mattress
- LED reading lights over master bed
- Designer residential bedspread with five pillows
- Lift up beds w/ gas struts (Most models)
- Cable TV hook-up
- Stain resistant carpet w/ padding
- Solid privacy doors

BATHROOM

- NEW giant mirror w/ vanity light
- Ceiling light w/ convenient wall switch

- Porcelain foot flush toilet
- ABS tub or shower w/ one-piece surround

EXTERIOR:

- NEW Bluetooth exterior speaker w/ LED light
- Patio awning
- Patio door w/ screen
- Radius entry door
- 15" radial tires (16" with optional fiberglass exterior)
- Entry assist handle
- 2 - 30 lb. LP tanks w/ automatic change over & EZ access LP cover
- City water fill

CONSTRUCTION

- 12" extruded I-beam frame (Per model)
- Cambered chassis
- 40 gallon fresh water tank
- 2" x 3" floor joists 12" on center
- 5/8" 5-ply tongue and groove plywood floor decking
- 2" wall studs maximum 16" on center
- 5" bowed truss roof rafters
- 3/8" walk-on roof decking
- R-7 insulation
- Seamless one piece roof w/ 12 year manufacturer defect warranty

SECURITY & SAFETY

- Smoke detector
- Fire extinguisher
- Carbon monoxide detector

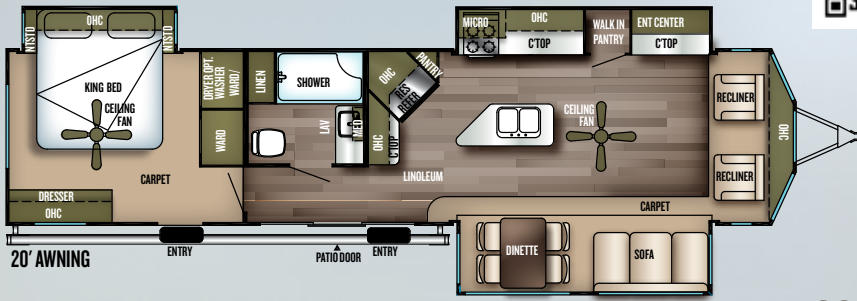
- LP gas leak detector
- Porch light w/ interior switch
- Screen door w/ safety latch
- GFI receptacles and covered patio outlet
- Welded heavy duty safety chains
- Certified to meet all national highway traffic safety administration specs

POPULAR OPTIONS:

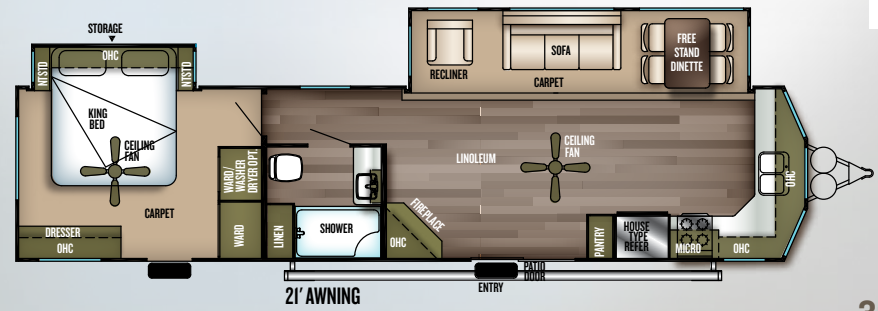
- Gel coat fiberglass exterior
- 10-gallon gas/electric DSI water heater
- Skylight over tub
- Outside kitchen (402QBQ only)
- Free standing dinette w/ 4 chairs
- Outside shower
- Detachable hitch

LIMITED TIME PROGRAM OPTIONS:

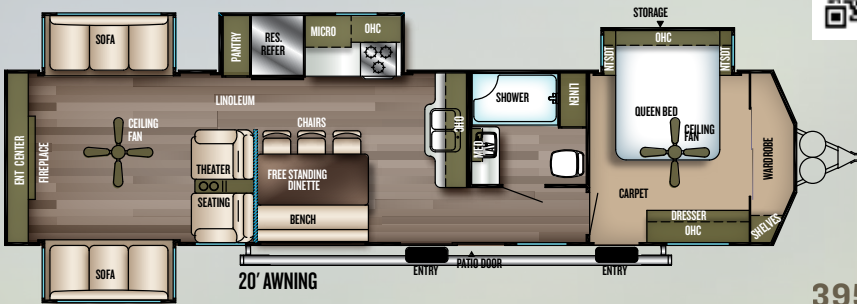
- Exterior LED light strip under awning
- LED interior mushroom style bright lights
- Central vacuum system
- LG® solid surface kitchen countertops
- Modern roller shades w/ autostop (Living room, bed)
- Recessed stove with glass stove cover
- Stainless steel kitchen appliances
- LED accent light pkg: under-cabs and over living room slides
- Stainless steel roll up sink cover



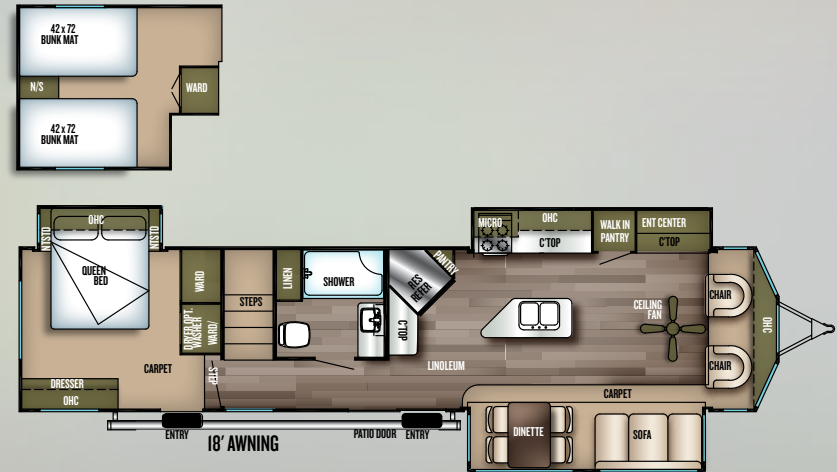
393FLT
 DRY WEIGHT
 11,029



394FKDS
 DRY WEIGHT
 10,134



395RET
 DRY WEIGHT
 11,357



4092BFL
 DRY WEIGHT
 11,912



	393FLT	394FKDS	395RET	4092BFL	42DL
HITCH WEIGHT (LBS.)	1535	1555	1468	1605	1855
AXLE WEIGHT (LBS.)	9435	8520	9830	10248	10805
UVW (LBS.)	11029	10134	11357	11912	12719
CARGO CARRYING CAPACITY (LBS.)	2506	1621	2111	1693	1136
EXTERIOR LENGTH (LBS.)	40' 6"	40' 10"	41' 0"	41' 11"	43' 7"
EXTERIOR HEIGHT (LBS.)	12' 7"	12' 7"	12' 8"	13' 4"	13' 2"
FRESH WATER (GAL.)	39	39	39	39	39
BLACK WATER (GAL.)	40	40	40	40	40
GREY WATER (GAL.)	80	90	80	80	80
TIRE SIZE (IN.)	16"	15"	16"	16"	16"

GRAND LODGE



SEE DEALER
 FOR STANDARDS
 & OPTIONS LIST

42DL
 DRY WEIGHT
 12,719

Lodge Standards & Options

COMFORT AND CONVENIENCE

- 8 Foot tall ceiling heights
- 7 Foot tall slide heights
- Deluxe window package with tinted glass windows
- Beauflor® plank wood linoleum
- 102" Exterior width for increased living space
- Wider hallways
- Water heater by-pass
- Wired and braced for second A/C (2nd A/C standard on 4092BFL and 42DL)
- Modern roller shades w/ autostop in living room, bed (Limited program option)
- 20-Gallon electric water heater
- Ducted Dometic® 15,000 BTU central air conditioner w/ quick cool feature
- In-floor ducted heat w/ 35K BTU furnace
- Flush-floor hydraulic slide rooms w/ manual override (Most models)
- Systems monitor panel
- Shaw stain resistant carpet with padding
- 50 Amp electrical service and
- 65 Amp 12 volt converter
- Solid hardwood drawer fronts

KITCHEN

- NEW whirlpool 1.7 cu. ft. oversized microwave
- NEW one piece designer backsplash
- 2 outlets in every kitchen
- Skylight in every kitchen
- Brushed nickel hardware
- Free standing dinette with 4 chairs
- Extra large, shaker style, overhead cabinets

- Full extension ball bearing drawer guides
- Residential style, built-in oven and cooktop
- 16 Cu. Ft. Residential electric refrigerator
- Pantry with shelves
- High-definition countertops
- Dual basin stainless steel sink

LIVING ROOM

- NEW Bluetooth sound bar w/ TV hook-up
- Thomas Payne® collection tri-fold sofa
- Thomas Payne® collection rocker recliners (Per floorplan)
- 4 Speakers
- Digital TV antenna w/ booster
- Cable and satellite hookup
- Glass sliding patio door
- Ceiling fan with wall switch

BEDROOM

- Upgraded "teddy bear" bunk mattresses (Per model)
- Extra large dresser drawers
- Shoe nook at foot of master bed
- Outlets at back-side of master bed
- Denver 9" pillowtop mattress
- Bedspread and decorative pillows
- Ceiling fan (N/A 4092BFL and 42DL)
- Comfort flex (Box spring) bed frame and base with storage (Most models)
- Under bed storage (Most models)
- Cable TV hook-up
- Solid privacy doors

BATHROOM

- 50" Walk-in shower with seat (Most models)
- Giant mirror w/ vanity light
- Full extension ball bearing drawer guides
- Porcelain foot flush toilet(s)
- 12" 10-Blade fantastic bath fan™

EXTERIOR

- NEW Bluetooth remote exterior speaker
- Black exterior moldings
- (2) 110V lights on front (Some models)
- Cold crack and mildew resistant awning
- 15" Radial tires (Per floorplan)
- 30 Lb. Double LP tanks w/ automatic change over
- EZ access LP tank cover
- City water fill w/ brass valve
- Swing out entry assist handle

CONSTRUCTION

- 12" Forged I-beam frame
- Cambered chassis
- Seamless holding tanks
- Color coded water lines
- 2" X 3" floor joists 12" on center
- 5/8" 5-Ply tongue and groove plywood floor decking
- 2" Wall studs maximum 16" on center
- 5" Bowed truss roof rafters
- 3/8" Walk-on roof decking
- One-piece, seamless roof w/ 12 year warranty
- Triple sealed slide outs
- R-7 insulation throughout (Floors, walls, ceilings, and slide-outs)

SECURITY AND SAFETY

- Smoke detector
- Fire extinguisher
- Carbon monoxide detector
- LP gas leak detector
- Door latch w/ integrated dead bolt lock
- GFI receptacles and covered patio outlet
- Welded heavy duty safety chains
- Lockable fiberglass radius baggage doors
- ANSI I19.2
- Certified to meet all national highway traffic safety administration specifications

POPULAR OPTIONS

- True high gloss gelcoat fiberglass exterior
- Detachable hitch (NA 42DL)
- Outside shower

LIMITED TIME PROGRAM OPTIONS

- Exterior white LED light strip under awning
- LED interior mushroom style bright lights
- Central vacuum system
- LG® Solid surface kitchen & bathroom counter tops
- Modern roller shades w/ autostop (Living room, bed)
- Stainless steel kitchen appliances
- 1.7 cu. ft. oversized Whirlpool® microwave
- Stainless steel dual basin undermount sink
- LED accent light pkg: under-cabs and over living room slides
- Stainless steel roll up sink cover

The Wildwood Product Lineup



WILDWOOD



X-LITE



HERITAGE GLEN



DLX | LODGE | GRAND LODGE

CUSTOMER SATISFACTION



www.ForestRiverBuyLocal.com

FREE MEMBERSHIP
to Forest River Owners' Group

www.forestriverfrog.com



Learn More
Scan this barcode using a QR Reader on your smart phone to learn more about Forest River.



A Berkshire Hathaway company.

FOREST RIVER, INC. 55470 C.R. 1 ELKHART, IN 46515 | (574) 533-5934
WWW.FORESTRIVERINC.COM/WILDWOOD | WWW.FORESTRIVERACCESSORIES.COM



PRE-DELIVERY INSPECTION FACILITY

20,000 square feet of quality assurance. The bare essentials for a premium product. This state-of-the-art facility gives immediate daily feedback to production for quality assurance in every unit built.

Specification Definitions

GVWR (Gross Vehicle Weight Rating) - is the maximum permissible weight of the unit when fully loaded. It includes all weights, inclusive of all fluids, cargo, optional equipment and accessories. For safety and product performance do NOT exceed the GVWR.

GAWR (Gross Axle Weight Rating) - is the maximum permissible weight, including cargo, fluids, optional equipment and accessories that can be safely supported by a combination of all axles.

UVW (Unloaded Vehicle Weight)* - is the typical weight of the unit as manufactured at the factory. It includes all weight at the unit's axle(s) and tongue or pin and LP Gas. The UVW does not include cargo, fresh potable water, additional optional equipment or dealer installed accessories.

*Estimated average based on standard build optional equipment.

CCC (Cargo Carrying Capacity)** - is the amount of weight available for fresh potable water, cargo, additional optional equipment and accessories. CCC is equal to GVWR minus UVW. Available CCC should accommodate fresh potable water (8.3 lbs per gallon). Before filling the fresh water tank, empty the black and gray tanks to provide for more cargo capacity.

** Estimated average based on standard build optional equipment

Each Forest River RV is weighed at the manufacturing facility prior to shipping. A label identifying the unloaded vehicle weight of the actual unit and the cargo carrying capacity is applied to every Forest River RV prior to leaving our facilities.

The load capacity of your unit is designated by weight, not by volume, so you cannot necessarily use all available space when loading your unit.

All information contained in this brochure is believed to be accurate at the time of publication. However, during the model year, it may be necessary to make revisions and Forest River, Inc., reserves the right to make all such changes without notice, including prices, colors, materials, equipment and specifications as well as the addition of new models and the discontinuance of models shown in this brochure. Therefore, please consult with your Forest River dealer and confirm the existence of any materials, design or specifications that are material to your purchase decision. Litho. U.S.A. FOR 1420 P/W: 2017.11.15

YOUR XLITE DEALER

2018