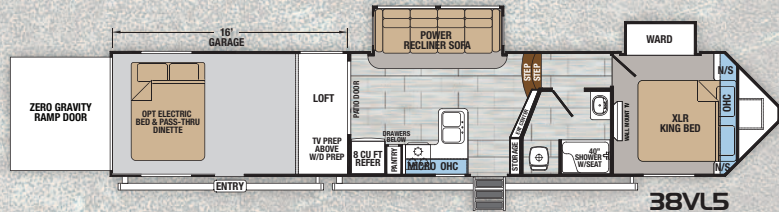
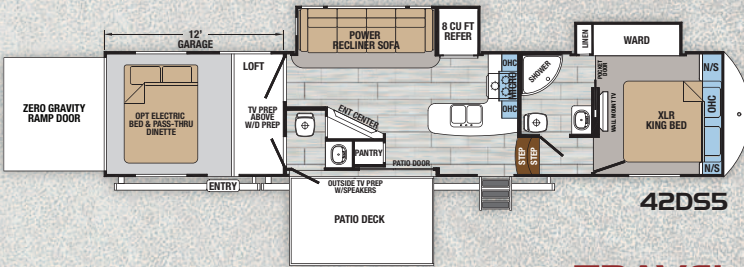
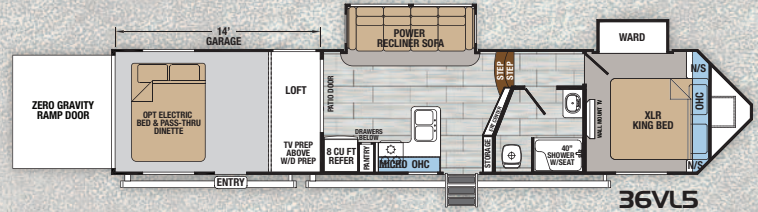
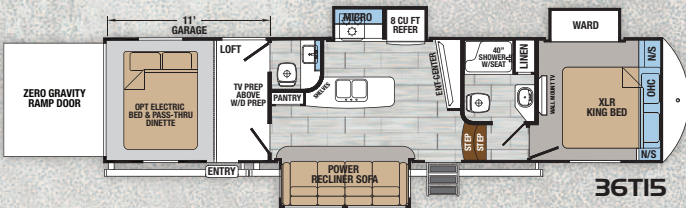
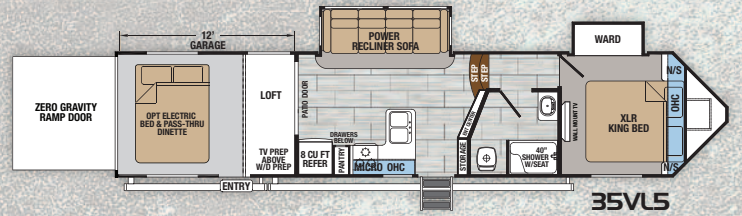
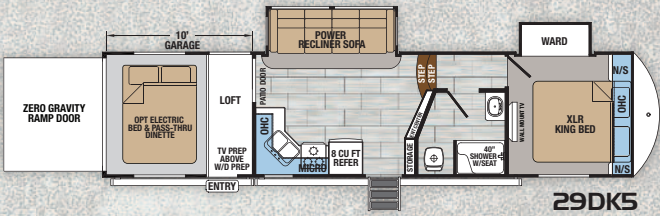


# XLR TOY HAULERS

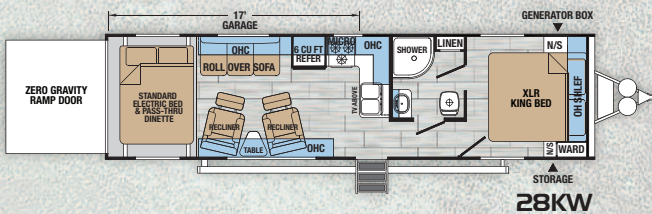
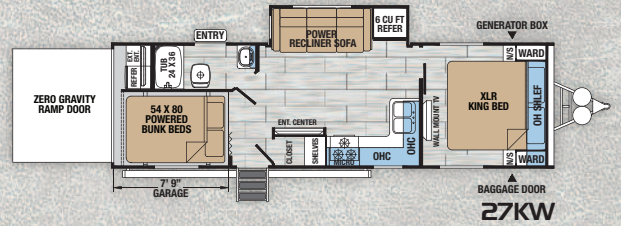
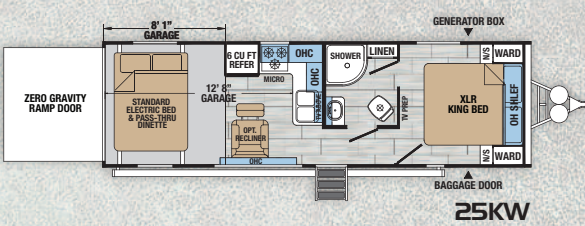
# NITRO



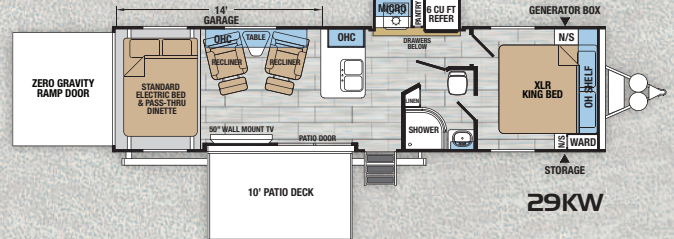
## FIFTH WHEELS



## TRAVEL TRAILERS



**Optional 60" sofa slide available on 28KW and 29KW**

# XLR TOY HAULERS NITRO

## STANDARDS & OPTIONS

### INTERIOR DECORS

- Linen    ■ Mica    ■ Gunmetal

### EXTERIOR STANDARDS

- Aluminum Framed Laminated Sidewalls
- 102" Wide Body Construction
- Powder Coated Steel I-Beam Chassis
- One Piece Rubber Roof
- Two Tone Partial Painted Front Cap (FW)
- Large Entry Assist Grab Handle
- EZ-Lube® Dexter® Axles
- Marine Grade Speakers
- Huge Tinted Safety Glass Windows
- 18K Hitch Pin (FW)
- Collapsible Exterior Ladder (FW)
- Black Tank Flush
- Full Walk-on Roof
- Rain Gutter Drip Spouts
- LED Exterior Lighting
- Radial Tires with Nitrofill™
- Satellite Prep Main TV
- Hot and Cold Spray Port

### INTERIOR STANDARDS

- LED Interior Lighting
- Full Height Ceilings
- Plywood Decking
- Beauflor® Tile Pattern Flooring
- Shaker Style Cabinetry
- Full Extension Ball Bearing Drawer Guides
- Brushed Nickel Hardware

- AM/FM/Bluetooth Stereo
- Stainless Steel Galley Sink
- Large LCD Living Room TV
- 35K BTU Furnace
- 12V Battery Disconnect
- Ducted A/C and Heat Throughout
- Gas/Electric Water Heater
- 5,000# Steel Reinforced Tie Downs
- Dual Electric Happi-Jack Beds 54" x 80" (Std. 27KW)

### 2018 BIG AIR PACKAGE

- 13.5K Ducted A/C
- Spare Tire
- Blackout Features
- Aluminum Wheels
- Premium Graphics
- Fiberglass Caps (FW, TT)
- Electric Stabilizing Jacks
- Power Recliners with USB Chargers
- Upgraded TT Furniture
- Stainless Steel Appliances
- Enclosed Underbelly
- Solar Charger Input
- Night Shades
- Hid-N-Screen
- Wainscoting in Garage
- Hidden Hinges on Cabinetry
- Shaker Style Passage Doors,
- Radiant Roof, Floor, Slide Out Floor, Garage Floor
- Dual Front Insulation

### 50AMP Service & Gen Box 2018 N.O.S. PACKAGE

- LG Solid Surface Kitchen Countertop
- N.O.S Red Light Under Entry Steps
- Rear Vision Camera Pre-wire
- Key Alike - Single Key Lock System
- MORryde Zero G Ramp Door
- MORryde CRE Suspension Enhancement System
- MaxxAir Power Roof Vent Bathroom
- Red LED Exterior Marine Grade Speakers
- Upgraded Electric Awning with LED Lighting
- Solid Step Main Entry
- Main Entry Door Friction Hinge with Window and Upgraded Assist Close Screen Door

### CUSTOM EXTERIOR PACKAGES

- Full Body Paint with Premium Gel Coat Sidewalls\*
- \*Black Pearl, Freedom Blue, Acid Green, Victory Red, HD Orange

### OPTIONAL EQUIPMENT

- Extreme Weather Pkg (Dual Pane Windows, 12V Heated Tanks)
- Off The Grid Prep (Gen Prep and Mobile Fuel Station)

- Off The Grid Pkg (5.5 Onan Gen, Gen Prep, Mobile Fuel Station)
- Smart Power Tongue Jack (N/A with Leveling System)
- Second Electric Awning (FW)
- Tuson Electronic Sway Control
- Ground Control 3.0 Electric Leveling System
- 32" Flat Screen TV
- Satellite Wiring Package (Satellite Hook-up to each TV Location - Ground Dish Location)
- Convection Microwave
- 11 Cu. Ft. 110V Residential Refrigerator with Inverter IPO Gas/Electric (FW)
- 15K BTU A/C IPO 13.5K BTU
- Second 13.5K A/C Bedroom (N/A with EMS #006)
- Energy Management System with Three 13.5K BTU High Efficiency A/C's (N/A TTs)
- MaxxAir Power Roof Vent
- Electric Bed with Max Clearance Pass Thru Dinette (Std. 25KW, 28KW, 29KW)
- Screen Wall/Tent Wall IPO Hid-N-Screen
- Plush Removable Cargo Carpet
- VIP Party Deck and Electric Awning
- VIP Patio Steps (FW)
- Slide Out with Flip-up Jack Knife Seating (28KW & 29KW ONLY)

### FIFTH WHEELS

### TRAVEL TRAILERS

| MODEL           | 29DKS   | 35VLS   | 36T15   | 36VLS   | 38VLS   | 42DSS   | 25KW    | 27KW    | 28KW    | 29KW    |
|-----------------|---------|---------|---------|---------|---------|---------|---------|---------|---------|---------|
| Hitch Weight    | 2545    | 2579    | 3217    | 2850    | 3125    | 2669    | 1082    | 1215    | 995     | 1515    |
| UWW             | 11553   | 12678   | 13598   | 12210   | 13979   | 15404   | 9017    | 9073    | 8428    | 9256    |
| Cargo Capacity  | 4992    | 3901    | 3619    | 4640    | 4021    | 2596    | 3225    | 3450    | 4567    | 4259    |
| Exterior Length | 37' 10" | 41' 11" | 39' 11" | 43' 11" | 45' 11" | 43' 11" | 32' 5"  | 33' 8"  | 36' 9"  | 36' 9"  |
| Exterior Height | 12' 10" | 12' 10" | 13' 4"  | 13' 4"  | 13' 4"  | 13' 4"  | 12' 10" | 12' 10" | 12' 10" | 12' 10" |
| Exterior Width  | 102"    | 102"    | 102"    | 102"    | 102"    | 102"    | 102"    | 102"    | 102"    | 102"    |
| Fresh Water     | 94      | 94      | 94      | 94      | 94      | 94      | 94      | 94      | 94      | 94      |
| Grey Water      | 86      | 86      | 86      | 86      | 86      | 86      | 90      | 90      | 54      | 64      |
| Black Water     | 54      | 54      | 86      | 54      | 54      | 86      | 30      | 30      | 32      | 32      |



HD Orange Full Body Paint with Premium Gel Coat Sidewalls

**GVWR (Gross Vehicle Weight Rating)** - is the maximum permissible weight of the unit when fully loaded. It includes all weights, inclusive of all fluids, cargo, optional equipment and accessories. For safety and product performance do NOT exceed the GVWR.

**GAWR (Gross Axle Weight Rating)** - is the maximum permissible weight, including cargo, fluids, optional equipment and accessories that can be safely supported by a combination of all axles.

**UVW (Unloaded Vehicle Weight)\*** - is the typical weight of the unit as manufactured at the factory. It includes all weight at the unit's axle(s) and tongue or pin and LP Gas. The UVW does not include cargo, fresh potable water, additional optional equipment or dealer installed accessories.

\*Estimated Average based on standard build optional equipment.

**CCC (Cargo Carrying Capacity)\*\*** - is the amount of weight available for fresh potable water, cargo, additional optional equipment and accessories. CCC is equal to GVWR minus UVW. Available CCC should accommodate fresh potable water (8.3 lbs per gallon). Before filling the fresh water tank, empty the black and gray tanks to provide for more cargo capacity.

\*\*Estimated average based on standard build optional equipment

Each Forest River RV is weighed at the manufacturing facility prior to shipping. A label identifying the unloaded vehicle weight of the actual unit and the cargo carrying capacity is applied to every Forest River RV prior to leaving our facilities. The load capacity of your unit is designated by weight, not by volume, so you cannot necessarily use all available space when loading your unit.

### XLR Nitro by Forest River

2421 Century Drive ■ Goshen, IN 46528 ■ E-mail: XLRinfo@forestriverinc.com  
 Phone: 574-642-0438 ■ [www.forestriverinc.com/XLR](http://www.forestriverinc.com/XLR)  
[www.forestriveraccessories.com](http://www.forestriveraccessories.com) ■ #XLRtoyhaulers



**Learn More**  
 Scan this barcode using a QR Reader on your smart phone to learn more about Forest River.

