

Flagstaff

MICRO LITES & SHAMROCKS

WE'RE  YOUR
LIGHT WEIGHT
SPECIALISTS
EST. 1974



MICRO LITES & SHAMROCK

Flagstaff



We're building a legacy.

FLAGSTAFF HAS EMERGED AS AN INDUSTRY LEADER IN THE MANUFACTURING OF LIGHT WEIGHT TRAVEL TRAILERS, FIFTH WHEELS AND CAMPING TRAILERS. For over 25 years, Flagstaff has been committed to being the market's "light weight" specialist. With a focus on providing travel trailers to meet the weight requirements of the vehicles our customers own, we have built a tradition of providing superior value and service while remaining in tune with our customer's needs. As a result, Flagstaff has become one of the most versatile product lines in the light weight trailer market, proudly showcasing more innovative floor plans, appealing features and refined interior appointments than any others in its class.





TODAY, FLAGSTAFF REMAINS COMMITTED TO INSURING THAT OUR CUSTOMERS ENJOY THEIR CAMPING EXPERIENCES. Through the utilization of our experienced work force, “state of the art” lamination facility, modern production plants and detailed assembly processes, we continue to provide our customers with the best built product possible at an unmatched value.



THE TRADITIONAL FLAGSTAFF SHAMROCK AND MICRO LITES CONTINUE TO PROVIDE UNSURPASSED VALUE AND COMFORT.

The spacious interiors offer numerous windows, 80" vaulted ceilings with directional vented air conditioning and extensive interior LED lighting throughout. Rich with appointments like solid surface kitchen counter tops and under mount kitchen sinks (select models), a stove top with glass cover, 22" oven and distinctive Maple or Driftwood cabinets with solid wood doors and drawer fronts throughout add to the tremendous value provided.



Standard White Exterior

Featuring an aluminum framed with vacuum bonded construction, high gloss fiberglass exterior and deluxe graphics, the Flagstaff Micro Lite & Shamrock are among the best constructed, most well insulated trailers available on the market today.



Optional Champagne Exterior

Flagstaff travel trailer models are loaded with features like Polished alloy wheels with Nitro filled radial tires mounted to Dexter Torflex Torsion Rubber Ride Axles for a smooth, safe ride. Don't forget about that clean Flagstaff look with frameless bonded windows and an automotive front windshield (where applicable)

19 SHAMROCK
REGAL / DRIFTWOOD





19 SHAMROCK

REGAL / MAPLE



Standard White Exterior

The tradition continues.

Flagstaff offers a group of appealing features to enhance your lifestyle and camping experience. Brand name appliances, ducted furnaces, a quick recovery auto gas / electric water heater and built in entertainment centers with Bluetooth technology and a sound bar, are just a few of the standards you can expect. For those who really want to get away, all our units are solar ready!

Styling and amenities while keeping your towing and camping needs in mind.

FLAGSTAFF

Micro Lite

**TOWING A TRAILER
DOESN'T REQUIRE A TRUCK
ANYMORE.** When towing size and weight are your focus. You will find that these specially designed Micro Lite models offer flexible floor plans that provide you with more comfort and amenities than you would expect — all within the towing capacity of many SUV's and Mini Vans

25BDS

SPOKANE / MAPLE



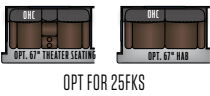
6

Optional Champagne Exterior

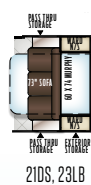




SLIDE OPTIONS



MURPHY BED OPTION:



FREE STANDING TABLE & CHAIRS OPTION



OPT FOR 21DS, 25BHS, 25FKS, 25BDS, 25BRDS, 25FBL5

MODEL NUMBER	19FDBH	19FD	19FBS	21DS	21FBR5	23FBKS	23LB	25KS	25BHS	25FKS	25BDS	25LB	25BRDS	25FBL5
Unloaded Vehicle Weight *	3368	3339	3582	4543	4251	4419	4121	4739	5124	5109	5234	4464	5170	5277
Base Dry Hitch Weight	434	418	451	548	446	653	499	598	648	631	555	660	694	711
Base Dry Axle Weight	2896	2883	3093	3936	3746	3707	3563	4082	4417	4419	4620	3745	4417	4507
Cargo Capacity	1066	1079	869	1485	1475	1514	1658	1859	1524	1522	1481	1476	1524	1594
Length (Hitch To Bumper)	20' 11"	20' 11"	20' 11"	21' 9"	21' 9"	23' 9"	23' 9"	25' 9"	25' 9"	25' 9"	25' 9"	25' 9"	25' 9"	25' 9"
Width	96"	96"	96"	96"	96"	96"	96"	96"	96"	96"	96"	96"	96"	96"
Height With A/C	126"	126"	126"	131"	123"	123"	123"	124"	131"	131"	131"	124"	131"	131"
Interior Height	80"	80"	80"	80"	80"	80"	80"	80"	80"	80"	80"	80"	80"	80"
Fresh Water Capacity	43 gal	43 gal	43 gal	43 gal	43 gal	43 gal	43 gal	43 gal	43 gal	43 gal	43 gal	43 gal	43 gal	43 gal
Gray Water Capacity	30 gal	30 gal	30 gal	30 gal	30 gal	30 gal	30 gal	30 gal	30 gal	60 gal	30 gal	30 gal	30 gal	30 gal
Black Water Capacity	30 gal	30 gal	30 gal	30 gal	30 gal	30 gal	30 gal	30 gal	30 gal	30 gal	30 gal	30 gal	30 gal	30 gal

The Unloaded Vehicle Weight (UVW) listed represents the weight of one trailer with that model's standard equipment including the content of specified option packages. * See back cover for further specification definitions.

FLAGSTAFF

Shamrock

A VALUE THAT'LL MAKE YOU JUMP! We have a trailer just for you. Whether you are interested in the expanded interior space provided by the spacious drop down bunks with heated mattresses or the ability to bring an ATV along with the feel of a traditional trailer, the Flagstaff Shamrock will deliver the quality and amenities you expect. Flagstaff brings the necessities of residential living on the campsite.

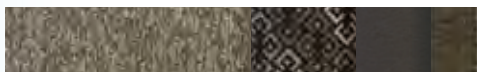
233S

BOULDER / MAPLE



233S

BOULDER / MAPLE

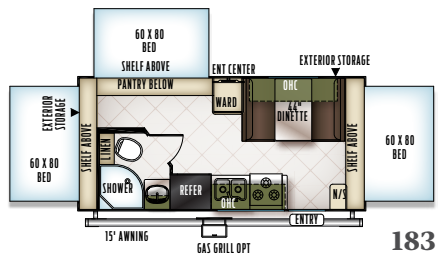


Standard White Exterior

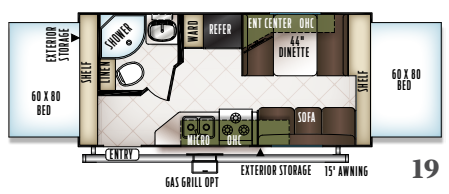


233S

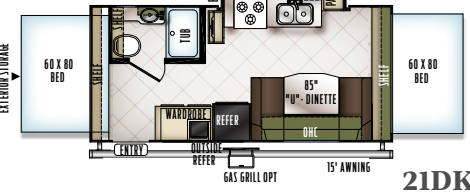
BOULDER / MAPLE



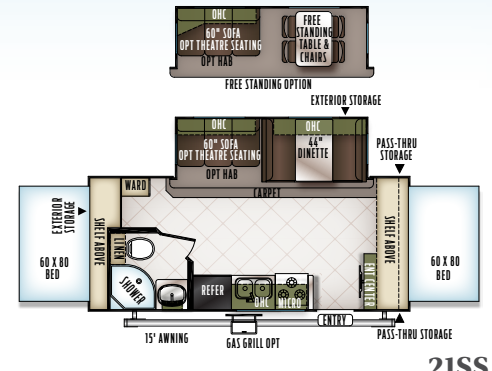
183



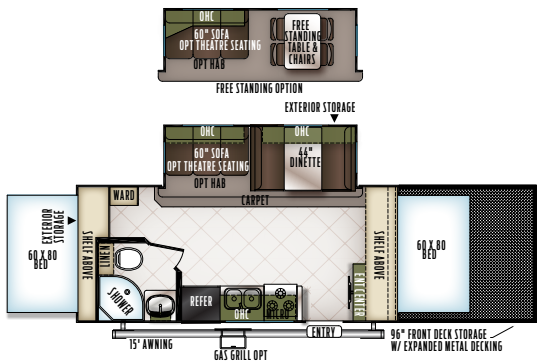
19



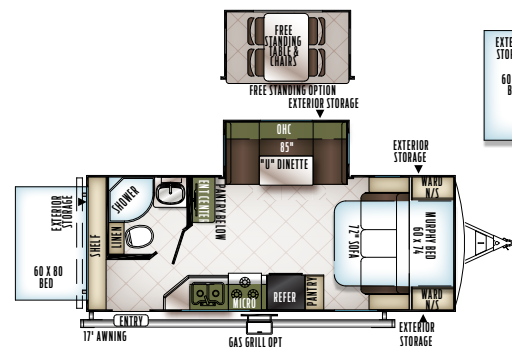
21DK



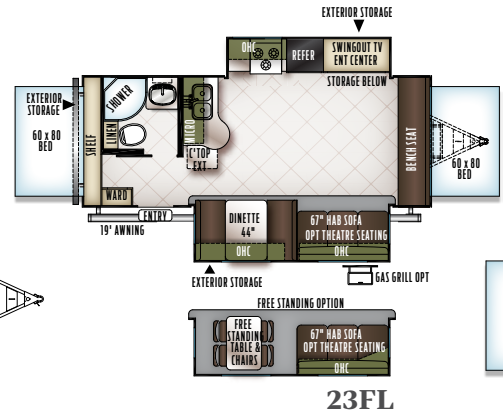
21SS



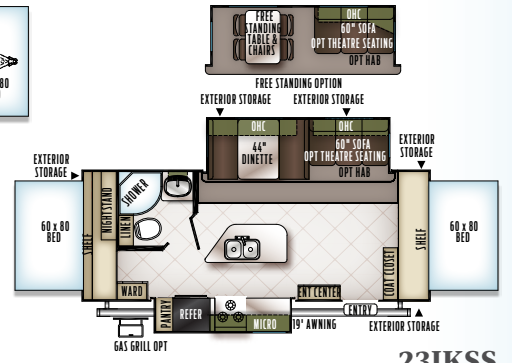
21SSL



23BDs



23FL



23IKSS



233S



24WS

MODEL NUMBER	183	19	21DK	21SS	21SSL	23IKSS	233S	23FL	23BDs	24WS
Unloaded Vehicle Weight *	3904	3885	4186	4795	5704	5445	4842	5617	5201	5299
Base Dry Hitch Weight	387	434	584	600	452	684	612	750	592	616
Base Dry Axle Weight	3479	3413	3564	4157	5214	4723	4192	4829	4571	4645
Cargo Capacity	1483	1549	1598	1805	1748	1239	1770	1133	1391	1317
Length (Hitch To Bumper)	21' 3"	21' 3"	21' 9"	22' 10"	32' 2"	25' 3"	25' 3"	25' 3"	25' 1"	25' 3"
Trailer Length (Open)	25' 7"	25' 7"	26' 1"	27' 2"	36' 4"	29' 7"	29' 7"	29' 7"	29' 10"	29' 7"
Width	96"	96"	96"	96"	96"	96"	96"	96"	96"	96"
Height With A/C	126"	126"	126"	130"	134"	130"	126"	130"	130"	130"
Interior Height	80"	80"	80"	80"	80"	80"	80"	80"	80"	80"
Fresh Water Capacity	43 gal	43 gal	43 gal	43 gal	43 gal	43 gal	43 gal	43 gal	43 gal	43 gal
Gray Water Capacity	30gal	30gal	30gal	30gal	30gal	30gal	30gal	30 gal	30 gal	30 gal
Black Water Capacity	30gal	30gal	30gal	30gal	30gal	30gal	30gal	30 gal	30 gal	30 gal

The Unloaded Vehicle Weight (UVW) listed represents the weight of one trailer with that model's standard equipment including the content of specified option packages.
 *See back cover for further specification definitions.

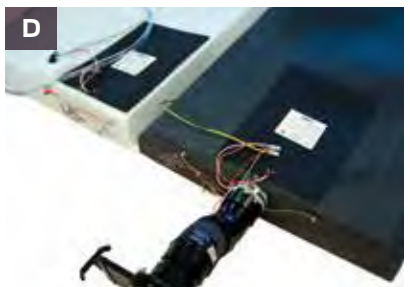


Popular Features

JUST A FEW FEATURES THAT MAKE US GREAT. Flagstaff takes careful consideration to each feature added into each product produced. Every detail is considered ranging from extra sleeping room, storage, comfort and convenience. Take time to review the features listed below and match them with the competition's products. We're confident you'll discover Flagstaff is the superior choice.



- A** Power Awning with tilt adjustment and LED indirect lighting (Opt.)
- B** 24" and 32" TV, entertainment center and sound bar where applicable. (Selected Models)
- C** Radius Glass Door Shower (N/A Models with Tub Bases)
- D** Solid Surface Kitchen counter tops with flush mount sink and covers. (Excludes 19FDBH, 19FD & 19FBS)
- E** Deluxe Tri-Fold Sleeper Sofa (Per floorplan)
- F** Deluxe Tri-fold Sleeper Sofa with Comfortable, Easy Set-up Queen Bed.



A Rear camera prep. (Std. all models) The Furrion observation camera system with digital wireless technology is sold separately.

B Control Panel (Std.)

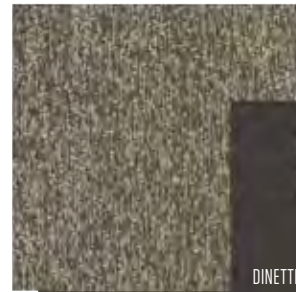
C WIFI Ranger WIFI Booster, providing you with a secure connection through your WIFI. (Std.)

D Heated holding tanks with 12 Volt heat pads secured to the bottom No need to use the furnace to heat tanks when traveling. (Opt.)

E Solar Panel Prep (Std. All Models) The Zamp 40 amp. portable solar panel shown is sold separately.

F 60" Heated theater seating (Per floorplan)

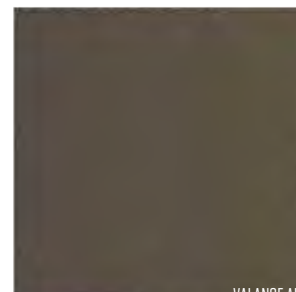
SOFA



CURTAINS

Boulder

SOFA & DINETTE CUSHIONS



CURTAINS

Regal

SOFA LEATHER APPEARANCE, & DINETTE BACK INSERT



CURTAINS

Spokane

VALANCES & DINETTE



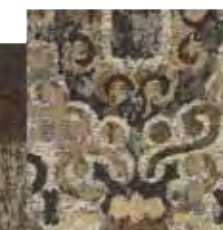
DINETTE CUSHIONS, & ACCESSORIES

VALANCES, & DINETTE BACK INSERT



VALANCE ARMS & ACCESSORIES

VALANCE TOPS & ACCESSORIES



DINETTE CUSHIONS



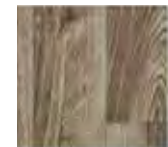
DRIFTWOOD DÉCOR STANDARD



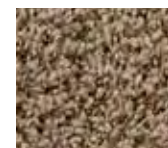
MAPLE DÉCOR OPTION



STANDARD FLOOR COVERING



OPTIONAL FLOOR COVERING



CARPET

FLAGSTAFF MICRO LITE & SHAMROCK

Quality Construction

THE DETAILS ARE WHAT MAKE ALL THE DIFFERENCE. Flagstaff takes pride in constructing the very best products possible in each price point. From our entry level units to our top of the line products, no short cuts are taken to achieve excellence. From the all-steel I-beams to the residential interior amenities to the vacuum-bonded exteriors, Flagstaff products are quality built from the ground-up.



- 1 Glued and screwed wood cabinetry
- 2 Aluminum dinette frames for added strength and weight savings
- 3 5/8" Tongue and Groove Plywood sub-floor glued and screw to aluminum framing.
- 4 Extra large dinette storage drawers and full extension metal drawer guides in the kitchen
- 5 Dexter Torflex Axles:
 - Independent wheel suspension and self-damping action
 - Rubber cushioning eliminates metal-to-metal contact.
 - Forged torsion arm for maximum strength
- 6 Models are also equipped with E-Z Lube® System and Nev-R-Adjust® Brakes.
- 6 Standard under belly to protect trailer components as well as increasing aerodynamics on Micro Lites (Excludes 19FDBH, 19FD, 19FBS and Shamrocks)
- 7 Aluminum Frame Construction with high gloss fiberglass exterior and deluxe graphics



ROOF CONSTRUCTION



Vacuum-bonded radius roof with vaulted ceiling providing superior insulation and more interior height.



4" thick roof with built in insulated A/C ducts



Built strong to enable you to conveniently perform periodic roof maintenance.

WALL STRENGTH



Structurally engineered materials makes our vacuum-bonded walls some of the strongest in the industry.

VACUUM-BONDED LAMINATED CONSTRUCTION



Flagstaff is one of only a few manufacturers with six sided aluminum framing. Vacuum bonded walls and roof to ensure a well-insulated, light weight, strong structural trailer.

Standards & Options

MODELS	S	ML	MODELS	S	ML	MODELS	S	ML
STANDARD PACKAGE H (19FD, 19FDBH, 19FBS)	--	S*	Polished Alloy Wheels	S	S	Engineered Mold and Mildew Resistant Floor Covering	S	S
Tinted Bonded Frameless Windows	--	S	LED TV W/ Multi-directional Antenna	S	S	Ducted Furnace	S	S
Aluminum Wheels	--	S	Prewire for Back Up Camera and Solar	S	S	13,500 BTU Ducted Air (N/A 19FBS, 19FD, 19FDBH, 183, 19)	S*	S*
AM/FM Stereo W/ DVD Player	--	S	Multi Zone Stereo W/ DVD/CD/AM/FM and Bluetooth Control	S	S	15,000 BTU A/C	0	0
Dual LP Bottles	--	S	Outside Speakers	S	S	13,500 Roof A/C (Std. 183, 19)(Opt. 19FDBH, 19FBS, 19FD)	S*	S*
Flush Mount Stove Cover	--	S	Maxxair® Ventilation Fan and Vent Cover (2 for Pkg. G)	S	S	Carbon Monoxide Detector	S	S
Black Tank Flush	--	S	13,500 BTU Roof AC	S	S	12 Volt Power Plug Hook-up	S	S
Single Door Auto Gas/Elec. Refrigerator	--	S	Night Shades	S	S	CSA	0	0
Ducted Furnace	--	S	Double Bowl Undermount Kitchen Sink	S	S	Monitor Panel Switch Station	S	S
Heated Mattress	--	S	Solid Surface Kitchen Countertops (N/A 19' Micro Lites)	S	S	55 Amp Converter With Charger	S	S
TV Antenna	--	S	Recessed Cooktop W/ Flush Mount Cover	S	S	Battery Disconnect Switch	S	S
Microwave Oven	--	S	Microwave Oven	S	S	Recessed Ceiling LED 12 Volt Interior Lighting	S	S
Spare Tire Carrier and Cover	--	S	Double Door Auto Gas/Elec. Large Refrigerator (Opt 19 and 183 Shamrock)	S	S	Bunk Fan/Light Combination with Each Bed	S	--
Water Heater w/ Interior Gas and Electric Switches	--	S	Water Heater w/ Interior Gas and Electric Switches	S	S	Mounted 24" LCD TV (Opt. 19FBS, 19FD, 19FDBH)	S	S*
Gas Oven	--	S	Power Awning	S	S	Bedroom Mounted 24" LCD TV (Opt. 25FKS S: 23IKSS, 233S Only)	0*	0*
Outside Speakers	--	S	Black Tank Flush	S	S	Mounted 32" LCD TV (S: 24WS, 21BD, 21DK, 21SS, 21SSL, 23IKSS ML: 25FKS, 25BDS, 25BRDS)	S*	S*
Night Shades	--	S	Spare Tire W/ Carrier and Cover	S	S	Digital AM/FM/CD/DVD w/ Remote	S	S
			Tinted Bonded Frameless Windows	S	S	MP3 Player Hook-Up	S	S
STANDARD PACKAGES	Pkg. G	Pkg. D	Outside Grill (Pkg. D Only)	0	S*	Premium Soundbar (Where applicable)	S*	S*
Square Bunk Ends W/ Attached Boots & Aircraft Cable (Pkg. G Only)	S	--	Automotive Front Windshield	S*	S	Decorative Valances	S	S
Automotive Grade Easy Latch Bunk Latch/Lock (Pkg. G Only)	S	--				Heated Theater Seating w/USB Ports ILO Sofa (Per floorplan)	0*	0*
Aluminum Cage Dinette Base	S	S	INTERIOR FEATURES			Deluxe Tri-Fold Sleeper Sofa (Per floorplan)	0*	0*
6 Sided Aluminum Cage Construction	S	S	Driftwood Interior	S	S	44" Family Dinette (Per floorplan)	S*	S*
Vacuum Laminated 1 Piece Roof and Walls	S	S	Maple (w/ Solid Maple Glaze Finished Cabinet Doors) Interior	0	0	48" X 84" Spacious King-U-Style Dinette (Per floorplan)	S*	S*
Enclosed Underbelly (Pkg D. Only)	--	S	Decorative Slide Out Fascia	S	S	Free Standing High Pressure Laminated Table	S	S*
4 Frame Mounted Stabilizer Jacks	S	S	Solid Wood and Raised Panel Doors and Drawers	S	S	Free Standing Table and Chairs (Per floorplan)	0*	0*
Torsion Axle, Rubber-Ryde Suspension	S	S	Screwed and Glued Wood Cabinetry	S	S	Stainless Steel Appliances	0	0
Nitro Filled Radial Tires	S	S	Residential Full Extension Metal Drawer Guides	S	S			

STANDARDS & OPTIONS ARE SUBJECT TO CHANGE.



MODELS	S	ML
Double Door Auto Gas / Elect. Refrigerator	S*	S*
Raised Refrigerator Panels	0	0
Single Door Auto Gas/Elec. Refrigerator (19FDBH, 19FD, 19FBS)	--	S*
3 Burner High Output Gas Range w/ Glass Stove Top Cover	S	S
Gas Oven (Required 21DK, 23IKSS, 23FBKS, 25DKS, 25KS)	0*	0*
Under Mount Double Bowl Kitchen Sink w/ Residential Style Faucet (N/A 19FD, 19FDBH, 19FBS)	S	S*
Residential One-Piece Sink Cover	S	S
Cutting Board	S	S
Counter Top Extension (Std. 21FBRS, 23FB, 23LB, 25BDS, 25BRDS, 25BHS)	--	S*
Water-Pur Filtration System	S	S
Tub Surround	S	S
Radius Glass Door Shower	S*	S*
Bathroom Skylight	S	S
110 DSI Gas/Electric Six Gallon "Quick Recovery" Water Heater By-Pass Kit	S	S
Foot Flush Toilets	S	S
Extra Maxxair® Ventilation Fan and Vent Cover	S	0
Murphy Bed w/ Under Sofa Storage System and Outside Access for Unmatched Floor Plan Flexibility (Per floorplan)	--	0*/S*
Murphy Bed w/ Dinette for Unmatched Floor Plan Flexibility (Opt. 21FBRS)	--	0*
Heated Mattress	S	S
WiFi Ranger WiFi Booster	S	S

MODELS	S	ML
EXTERIOR FEATURES		
Magnetic Compartment Door Catches	S	S
Fully Aluminum Frame (Floor, Sidewall, & Roof)	S	S
Insulation Factors R-7 Side Wall, R-12 Floor and R-14 Ceiling	S	S
Radius Roof w/ Interior Vaulted Ceilings	S	S
Vinyl / Rubber Composite Roofing Membrane	S	S
T V Antenna w/ Cable & Satellite Hook-Up	S	S*
Rear Observation Camera Prep w/ Molded Mounting Plate	S	S
Laminated Oyster Colored Fiberglass Sidewalls	0	0
Laminated Fiberglass Sidewalls	S	S
Distinctive Black Exterior Trim	S	S
Electric Slide-Out (All Slide Out Models)	S	S
Lower Front Diamond Plate Panel	--	S
Easy to Reach Lockable Bed Latch System	S	--
Bed Cable System (No Poles)	S	--
Rear Ladder	--	0
Bike Rack Ladder Attachment	--	0
Power Awning With Adjustable Rain Dump and LED Lighting	S	S
Awning Slide Topper	0	0
Entrance/Screen Door	S	S
Friction Hinge Entrance Door	S	S
Large Assist Grab Handles	S	S
Radius Corner Windows and Doors	S	S

MODELS	S	ML
Thermopane Windows	0	0
Outside Grill Prep	S	S
Outside Gas Grill and Worktable (Opt: 19FBS, 19FD, 19FDBH)	0	S*/0*
Outside Shower	S	S
1/2 Sliding Storage Tray (N/A 19FDBH, 19FD, 23FB and All Models w/ Murphy Bed) (Opt. 183, 19, 21SS, 21SSL, 23IKSS)	0*	0*
Outside Antifreeze Stations	S	S
Two-20 Lb Gas Bottles (19FD, 19FDBH, 19FBS Only)	S	S*
Two-30 Lb Gas Bottles	--	S*
Molded Bottle Cover	S	S
Surface Coated Steel I-Beam Frame (N/A 19FBS, 19FD, 19FDBH)	S	S*
8' X 8' Front Storage Deck: 1300 LBS. Max Capacity (21SSL Only)	S*	--
Fuel Station with 18 Gallon Capacity (Gasoline Only) (Opt. 21SSL Only)	0	--
Toylok Mounted Locking System (21SSL Only)	S*	--
Power Tongue Jack	0	0
Easy Lube Axles and Nev-R Adjust Brakes	S	S
Radial Tires w/ Nitro Fill (19FD, 19FBS, 19FDBH)	S	S
Double or Triple Entry Step	S	S
Off Road Package (Includes: 15" Off Road Tires and Aluminum Wheels) (21SSL Only)	S*	--
Electronically Controlled Heated Holding Tanks	0	0
Black Water Flush	S	S

S = SHAMROCK, ML = MICRO LITE

S = STANDARD, 0 = OPTIONAL, -- NOT AVAILABLE, * = SELECTED MODELS

FREE MEMBERSHIP
to Forest River Owners' Group

www.forestriverfrog.com



CUSTOMER SATISFACTION



www.ForestRiverBuyLocal.com



PRE-DELIVERY INSPECTION FACILITY

20,000 square feet of quality assurance. The bare essentials for a premium product. This state-of-the-art facility gives immediate daily feedback to production for quality assurance in every unit built.

24/7 EMERGENCY ROADSIDE ASSISTANCE

For a worry-free ownership experience

Forest River includes one year of Coach-Net RV Technical & Roadside Assistance with each RV purchase. Whether new to the RV lifestyle or an experienced RV enthusiast, Forest River owners have 24/7 access to technical, operational and emergency road service coverage throughout the US & Canada. Coach-Net's fast, dependable service is just a phone call away.

Coach-Net[®]
RV Technical & Roadside Assistance

LOOK FOR OUR OTHER POPULAR LINES OF FLAGSTAFF CAMPING TRAILERS.



Flagstaff E-Pro Travel Trailers



Flagstaff Tent Campers



Flagstaff Super Lite Travel Trailers & Fifth Wheels



Flagstaff V-Lite, Classic Super Lite Travel Trailers & Fifth Wheels

Specification Definitions

GVWR (Gross Vehicle Weight Rating) - is the maximum permissible weight of the unit when fully loaded. It includes all weights, inclusive of all fluids, cargo, optional equipment and accessories. For safety and product performance do NOT exceed the GVWR.

GAWR (Gross Axle Weight Rating) - is the maximum permissible weight, including cargo, fluids, optional equipment and accessories that can be safely supported by a combination of all axles.

UVW (Unloaded Vehicle Weight)* - is the typical weight of the unit as manufactured at the factory. It includes all weight at the unit's axle(s) and tongue or pin and LP Gas. The UVW does not include cargo, fresh potable water, additional optional equipment or dealer installed accessories.

*Estimated average based on standard build optional equipment.

CCC (Cargo Carrying Capacity)** - is the amount of weight available for fresh potable water, cargo, additional optional equipment and accessories. CCC is equal to GVWR minus UVW. Available CCC should accommodate fresh potable water (8.3 lbs per gallon). Before filling the fresh water tank, empty the black and gray tanks to provide for more cargo capacity.

**Estimated average based on standard build optional equipment

Each Forest River RV is weighed at the manufacturing facility prior to shipping. A label identifying the unloaded vehicle weight of the actual unit and the cargo carrying capacity is applied to every Forest River RV prior to leaving our facilities.

The load capacity of your unit is designated by weight, not by volume, so you cannot necessarily use all available space when loading your unit.

FLAGSTAFF

Warranty

FOR DETAILS ON FLAGSTAFF'S COMPLETE WARRANTY PROGRAM, SEE YOUR FLAGSTAFF DEALER. When it comes to backing products with the same quality and commitment it does when it begins the manufacturing process, the only name you have to remember when you're looking for a recreational vehicle is Flagstaff. Flagstaff offers the following additional limited warranties to the original purchasers. Consult written warranty for details.

1. Twelve-year vinyl roof warranty,
2. Two-year fiberglass warranty,
3. Ten-year Torflex[®] axle warranty,
4. One-year bumper to bumper warranty,
5. Five-year tent warranty,



Learn More
Scan this barcode using a QR Reader on your smart phone to learn more about Forest River.



A Berkshire Hathaway company.

201 WEST ELM MILLERSBURG, IN 46543 WWW.FORESTRIVERINC.COM/FLAGSTAFF 574.642.2640

YOUR FLAGSTAFF DEALER

All information contained in this brochure is believed to be accurate at the time of publication. However, during the model year, it may be necessary to make revisions and Forest River, Inc., reserves the right to make all such changes without notice, including prices, colors, materials, equipment and specifications as well as the addition of new models and the discontinuance of models shown in this brochure. Therefore, please consult with your Forest River dealer and confirm the existence of any materials, design or specifications that are material to your purchase decision. Litho. U.S.A. FOR 1478 P&W: 2017.10.16