



# VIBE EXTREME LITE FOREST RIVER



VIBE  
EXTREME LITE  
FOREST RIVER



# WE'VE GONE TO THE EXTREME!

VIBE OFFERS THE MOST EXTREME LIGHTWEIGHT LINEUP IN THE INDUSTRY.

IF YOU'RE LOOKING FOR EXTREME EFFICIENCY, EXTREME VALUE AND EXTREME FUN  
THEN GOOD VIBES ARE JUST OVER THE NEXT HILL.

FLOORPLAN WEIGHTS START AT 4800 LBS.





# THE PERFECT COUPLE'S COACH





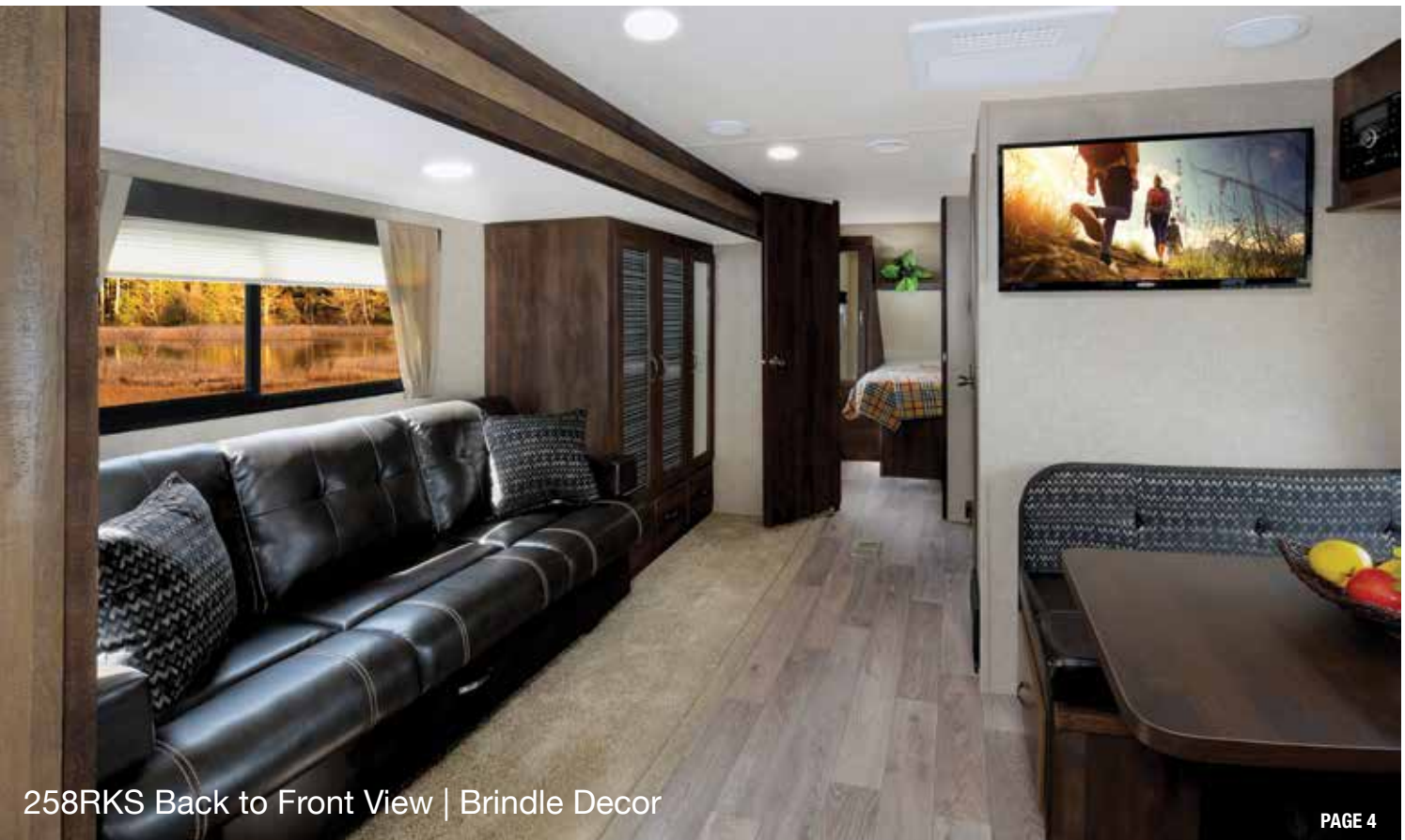
258RKS Bedroom



258RKS



258RKS Bathroom



258RKS Back to Front View | Brindle Decor

# BRING FAMILY AND FRIENDS





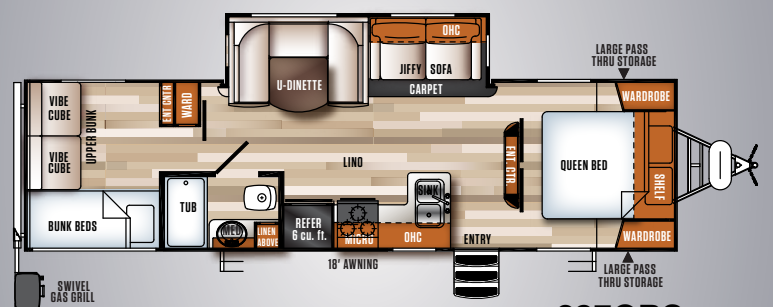
261BHS Front to Back View | Brindle Decor



261BHS Bedroom

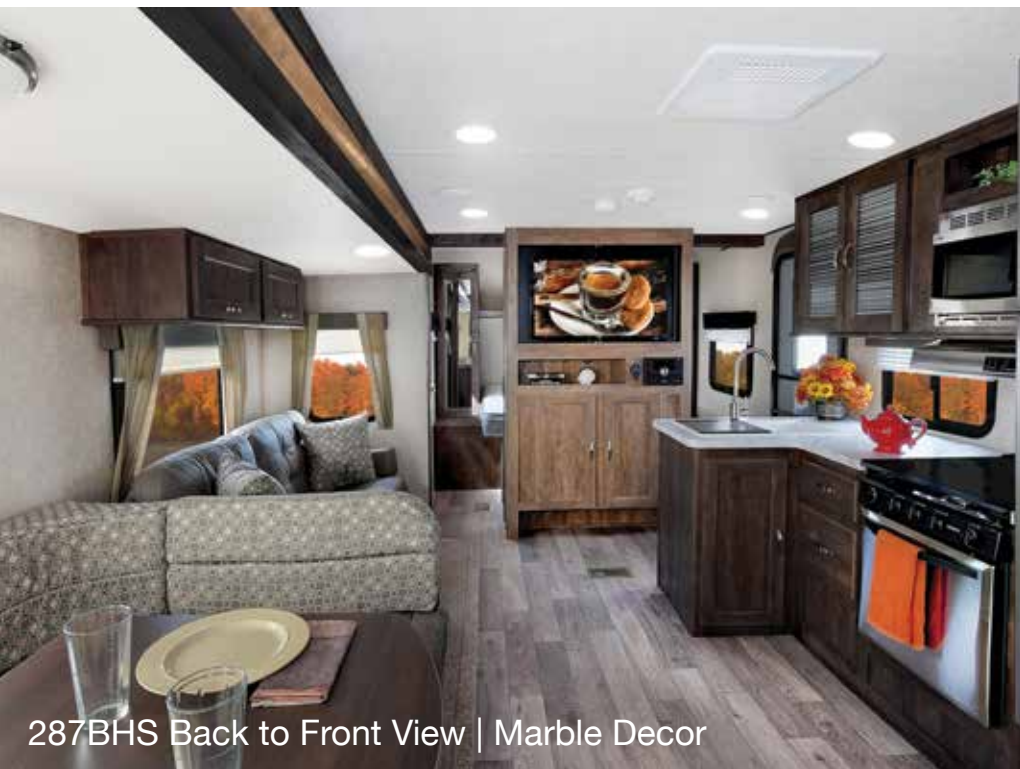


# BUNKHOUSE FLOORPLANS

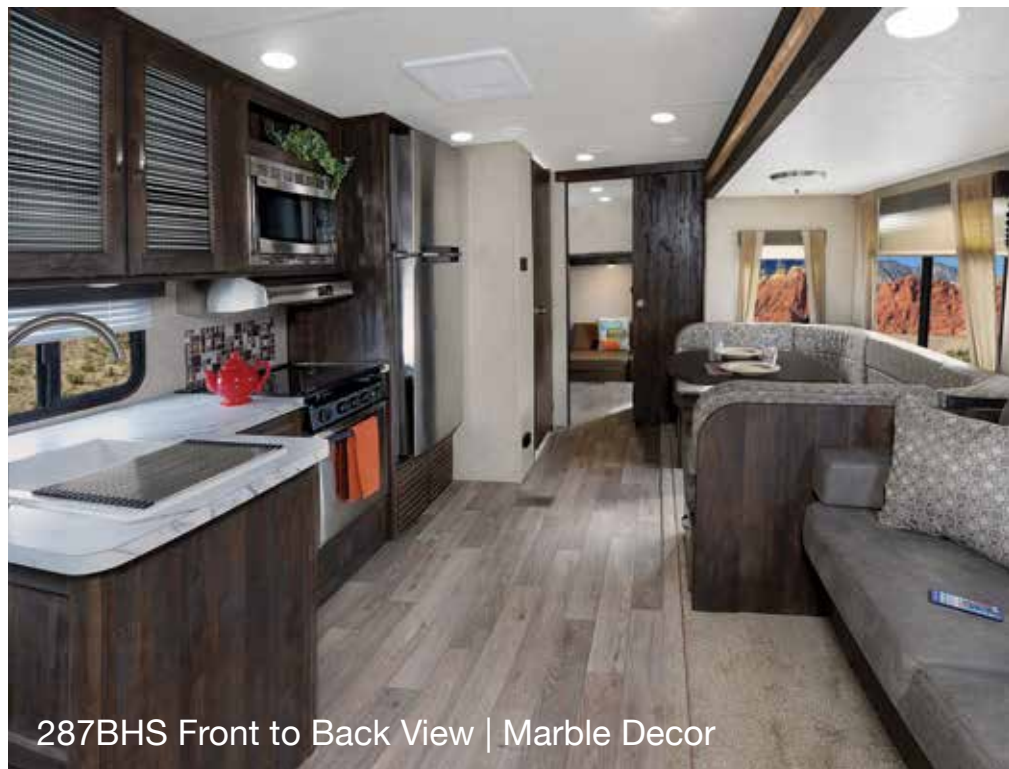








287BHS Back to Front View | Marble Decor



287BHS Front to Back View | Marble Decor



306BHS Front to Back View | Brindle Decor



287QBS Bunkroom

# STANDARDS/OPTIONS/FEATURES

## EXTERIOR STANDARD FEATURES

- HYPER LYTE CONSTRUCTION - AMAZINGLY LIGHT!!
- TRI-TONE GEL COAT FIBERGLASS W/ UPGRADED GRAPHICS PACKAGE
- VACUUM BONDED "ALUMA FRAME" SIDE WALLS AND 2" LAMINATED FLOOR
- HIGH GLOSS ROLLED FIBERGLASS FRONT END
- DUCTED 13.5 BTU AIR CONDITIONING
- HIGH EFFICIENCY A/C COOLING SYSTEM (LARGER DUCT WORK)
- CABLE & SATELLITE PREP
- DIGITAL TV ANTENNA W/ BOOSTER
- EXTRA LARGE, ALUMINUM FRAMED, PASS THRU STORAGE
- ONE TOUCH ELECTRIC AWNING
- LED GROUND EFFECT LIGHTING
- LED LIGHTED EXTERIOR SPEAKERS (2)
- XL GRAB HANDLE
- COACH-NET ROADSIDE ASSISTANCE
- RADIAL TIRES FILLED W/ NITROGEN
- HEATED AND ENCLOSED UNDERBELLY
- STABILIZER JACKS
- 2- 20# LP BOTTLES
- 30" FRICTION HINGE ENTRY DOOR

## INTERIOR STANDARD FEATURES

- ALUMINUM BED, BUNK AND DINETTE BASES
- REEDED GLASS IN KITCHEN CABINETS
- 3-BURNER COOK TOP W/ STAINLESS STEEL 22" OVEN

- LARGE DOUBLE BOWL KITCHEN SINK
- DOMETIC DOUBLE DOOR 6 cu. ft. GAS/ELECTRIC REFRIGERATOR W/ STAINLESS FRONT
- 6 GAL. G/E DSI WATER HEATER
- DOMETIC PEDAL FLUSH TOILET
- SOLID SURFACE KITCHEN COUNTERTOPS
- DELUXE WOOD BOOTH TABLE TOP
- HARD DOORS TO BEDROOMS FOR PRIVACY (NOT CURTAINS)
- DECORATIVE KITCHEN BACKSPLASH
- LARGE TRASH CAN W/ DESIGNATED OUT OF THE WAY AREA
- UPGRADED RESIDENTIAL STYLE CARPET
- FULL EXTENSION BALL BEARING DRAWER GUIDES
- STAINLESS STEEL KITCHEN PACKAGE
- POT & PAN DRAWER UNDER DINETTE SEAT
- STAINLESS STEEL ROLL UP SINK COVER
- BLUETOOTH MP3/DVD/CD/FM W/ SURROUND SOUND
- TEDDY BEAR SERIES BUNK MATS
- 6 CU. FT. DOMETIC GAS/ELECTRIC REFER

## OPTIONS

- ALUMINUM WHEELS
- SPARE TIRE
- SKYLIGHT OVER TUB/SHOWER

- OUTSIDE KITCHEN (BUMPER MOUNTED GRILL, FRIDGE, SINK W/DRAIN, METAL COUNTERTOP)
- JIFFY SOFA IPO LOWER BUNK (306BHS ONLY)
- 32" FLAT SCREEN TV (258RKS)
- 40" FLAT SCREEN TV
- OUTSIDE SHOWER
- 15K BTU DUCTED A/C IPO 13.5K
- 50 AMP SERVICE W/ WIRE & BRACE FOR 2ND A/C
- 2ND 13.5K A/C IN BEDROOM (REQUIRES 50 AMP)
- 10.7 CU. FT. WHIRLPOOL RESIDENTIAL REFER W/ 1000 WATT INVERTER
- TRI-FOLD SOFA IPO JIFFY
- FREE STANDING TABLE W/ 4 CHAIRS IPO BOOTH DINETTE

## LIMITED SHOWSTOPPER FEATURES

- DENVER PILLOWTOP QUEEN MATTRESS
- LCI FOLD DOWN SOLID STEP
- BLUE LED GROUND EFFECT LIGHTING
- POWER TONGUE AND STABILIZER JACKS
- LED AWNING LIGHT
- REMOTE CONTROL WITH WALL HOLSTER
- RECESSED STOVE W/GLASS COVER
- DECORATIVE WINDOW TREATMENTS (LIVING ROOM ONLY)
- NIGHT SHADES (LIVING ROOM ONLY)



LED AWNING LIGHT



ALUMINUM ENTRY STEPS



REMOTE WITH WALL HOLSTER



LED GROUND EFFECT LIGHTING



RESIDENTIAL WINDOW TREATMENTS



OPTIONAL 10.7 CU. FT. WHIRLPOOL RESIDENTIAL REFER W/ 1000 WATT INVERTER



POWER TONGUE JACK



HIGH RISE FAUCET



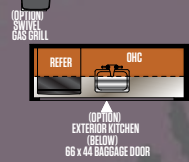
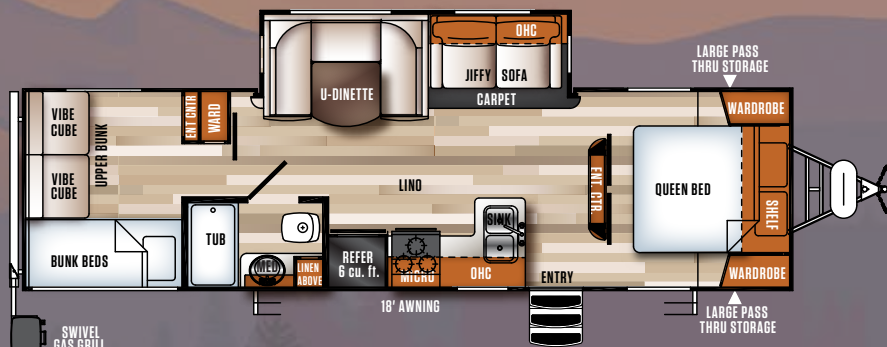
POWER STAB JACKS



DENVER MATTRESS



LARGEST OVEN IN ITS CLASS



**SPECIFICATIONS**

MODEL	258RKS	261BHS	287QBS	306BHS
HITCH WEIGHT	498	702	816	650
AXLE WEIGHT	4406	4766	5225	5853
UVW	4942	5506	6079	6523
CCC (CARGO CAP.)	1800	1867	1867	2887
EXTERIOR LENGTH	29' 6"	32' 10"	34' 9"	35' 7"
EXTERIOR HEIGHT	11' 0"	11' 0"	11' 0"	11' 0"
FRESH WATER (gal.)	46	46	44	44
BLACK WATER (gal.)	32	30	30	32
GREY WATER (gal.)	64	90	62	96
AWNING SIZE	20'	20'	18'	18'
TIRE SIZE	14"	14"	15"	15"



### PRE-DELIVERY INSPECTION FACILITY

20,000 square feet of quality assurance. The bare essentials for a premium product. This state-of-the-art facility gives immediate daily feedback to production for quality assurance in every unit built.

**GVWR (Gross Vehicle Weight Rating)** - is the maximum permissible weight of the unit when fully loaded. It includes all weights, inclusive of all fluids, cargo, optional equipment and accessories. For safety and product performance do NOT exceed the GVWR.

**GAWR (Gross Axle Weight Rating)** - is the maximum permissible weight, including cargo, fluids, optional equipment and accessories that can be safely supported by a combination of all axles.

**UVW (Unloaded Vehicle Weight)\*** - is the typical weight of the unit as manufactured at the factory. It includes all weight at the unit's axle(s) and tongue or pin and LP Gas. The UVW does not include cargo, fresh potable water, additional optional equipment or dealer installed accessories.

\*Estimated Average based on standard build optional equipment.

**CCC (Cargo Carrying Capacity)\*\*** - is the amount of weight available for fresh potable water, cargo, additional optional equipment and accessories. CCC is equal to GVWR minus UVW. Available CCC should accommodate fresh potable water (8.3 lbs per gallon). Before filling the fresh water tank, empty the black and gray tanks to provide for more cargo capacity.

\*\* Estimated average based on standard build optional equipment

Each Forest River RV is weighed at the manufacturing facility prior to shipping. A label identifying the unloaded vehicle weight of the actual unit and the cargo carrying capacity is applied to every Forest River RV prior to leaving our facilities.

The load capacity of your unit is designated by weight, not by volume, so you cannot necessarily use all available space when loading your unit.

All information contained in this brochure is believed to be accurate at the time of publication. However, during the model year, it may be necessary to make revisions and Forest River, Inc., reserves the right to make all such changes without notice, including prices, colors, materials, equipment and specifications as well as the addition of new models and the discontinuance of models shown in this brochure. Therefore, please consult with your Forest River dealer and confirm the existence of any materials, design or specifications that are material to your purchase decision.

## CUSTOMER SATISFACTION



[www.ForestRiverBuyLocal.com](http://www.ForestRiverBuyLocal.com)

### 24/7 EMERGENCY ROADSIDE ASSISTANCE

For a worry-free ownership experience Forest River includes one year of Coach-Net RV Technical & Roadside Assistance with each RV purchase. Whether new to the RV lifestyle or an experienced RV enthusiast, Forest River owners have 24/7 access to technical, operational and emergency road service coverage throughout the US & Canada. Coach-Net's fast, dependable service is just a phone call away.

**Coach-Net®**

VIBE  
**EXTREME LITE**  
FOREST RIVER



**Learn More**  
Scan this barcode using a QR Reader on your smart phone to learn more about Forest River.



A Berkshire Hathaway company.

VIBE/Forest River Inc.  
411 CR 15  
Elkhart, IN 46516  
(574)-296-2084  
[www.forestriverinc.com](http://www.forestriverinc.com)  
[www.forestriveraccessories.com](http://www.forestriveraccessories.com)