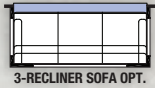
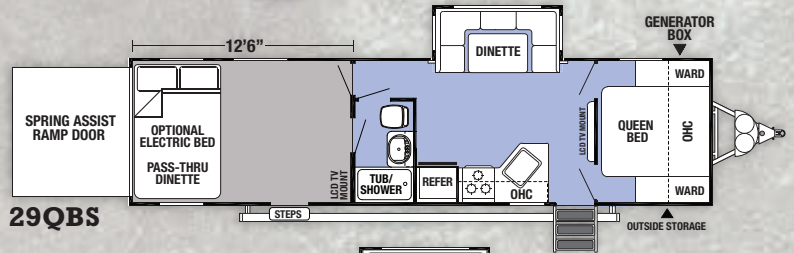
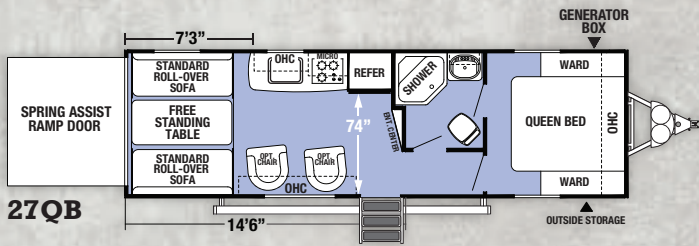
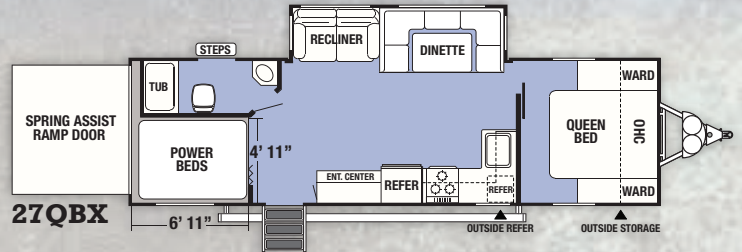
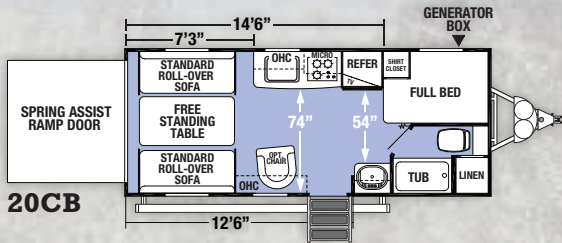




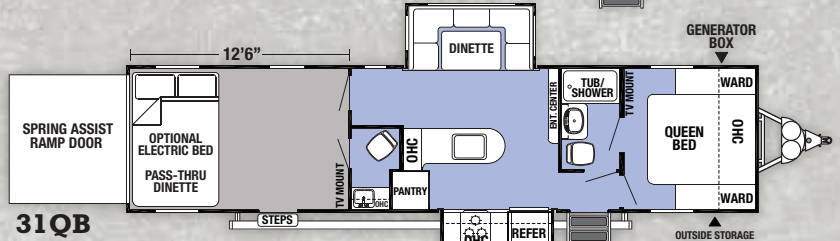
XLR TOY HAULERS BOOST



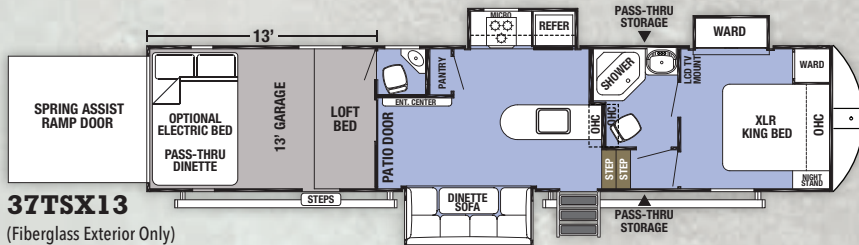
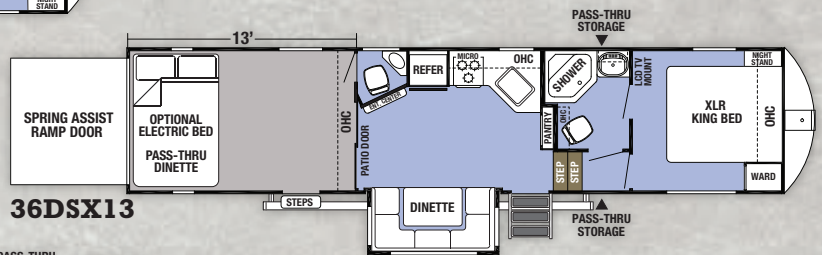
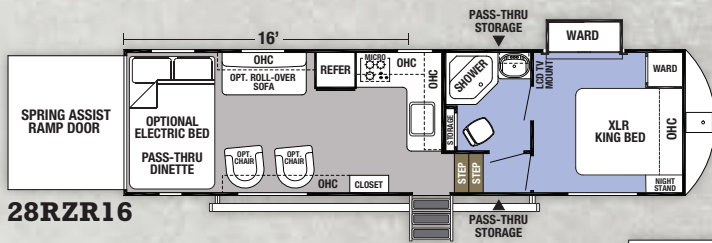
TRAVEL TRAILERS



This optional three recliner sofa is available on 29QBS, 31QB, 36DSX13 and 37TSX13



FIFTH WHEELS



XLR TOY HAULERS BOOST

STANDARDS & OPTIONS

INTERIOR DECORS

- Sand
- INTERIOR STANDARDS**
- 6 Gallon Gas/Electric DSI Water Heater
- USB Charging Station
- Bluetooth Dual Zone AM/FM/CD/DVD Player
- 8 Cu. Ft. Gas/Electric Refrigerator
- 35,000 BTU Forced Air Ducted Furnace
- Ducted Air Conditioning
- Wardrobe Cabinets in Bedroom
- Foot Flush Toilet
- Plywood Decking
- Full Height Ceiling
- Real Wood Doors and Drawers
- Free Standing Dinette Table
- Full Extension Kitchen Drawers (2)
- Deep Single Bowl Kitchen Sink
- Brushed Nickel Hardware
- Skylight Over Bath

EXTERIOR STANDARDS

- 13,500 BTU Air Conditioner
- 102" Wide Body Construction
- Radius Main Entry Door
- Enclosed Tanks
- Seamless EPDM Rubber Roof
- Powder Coated I-Beam Chassis
- Marine Grade External Speakers
- Self Adjusting Brakes
- Radial Tires

- 37TSX13 High Gloss Fiberglass Exterior Sidewall

POPULAR OPTIONS

- LED TV (Mandatory)
- 15K Main A/C IPO 13.5K
- 2nd 13.5K A/C (Requires 50AMP)
- 50 AMP Service (TT)
- 4.0 Onan Generator (TT - N/A with 50AMP)
- 5.5 Onan Generator (Requires 50AMP on TT)
- Electric Stabilizer Jacks (N/A - 20CB, 27QB)
- Industrial Garage Rubber Floor (TT)
- Electric Bed w/ Max Clearance Pass-thru Dinette (TT)
- Electric Bed w/Max Clearance Pass-thru Dinette (FW)
- Ramp Door Patio System
- Roof Ladder - Collapsible
- Ultracold Weather Heated Holding Tank 12V Pads
- Euro Recliner Black Leather
- Sofa Slide IPO Dinette Slide (29QBS, 31QB, 36DSX13, & 37TSX13)
- 58" Steel Roll Over Sofa Door Side (28RZR16, 27QB)
- Highgloss Fiberglass Exterior Sidewall (TT)
- Highgloss Fiberglass Exterior Sidewall (FW) (Mandatory 37TSX13)
- 100 Gallon Fresh Water Tank Upgrade (TT)
- Alumafoil Insulation

REV PACKAGE*

- Convection Microwave
- 30 Amp Service w/Detachable Cord (TT Only)
- 50 Amp Service w/Detachable Cord (FW Only)
- Back-up Camera Ready
- Upgraded Bathroom Vent Fan
- Drop-in Cooktop w/Glass Cover
- External Fuel Cell w/Pump
- External LED Strip Lighting
- Friction Door Hinge
- Generator Prep
- Internal Accent LED Strip Lighting
- LED Interior Lights
- Outside TV Bracket and Hook-ups
- Power Awning
- Power Tongue Jack (TT Only)
- Pull-out Kitchen Faucet
- Ramp Light
- RVQ Quick Connect
- Solar Prep
- Decorative Vinyl Flooring
- Spare Tire
- Upgraded Wheels
- Wood Decorative Blinds
- Battery Disconnect
- 2,500 lb. Tie-downs
- Hot and Cold Outdoor Shower
- Enclosed Under Belly

TRAVEL TRAILERS

FIFTH WHEELS

MODEL	20CB	27QB	27QBX	29QBS	31QB	28RZR16	36DSX13	37TSX13
Dry Hitch Weight	853-lbs.	1082-lbs.	1238-lbs.	1214-lbs.	1465-lbs.	2090-lbs.	2333-lbs.	2958-lbs.
Unloaded Vehicle Weight	4955-lbs.	6385-lbs.	7479-lbs.	8449-lbs.	9320-lbs.	8565-lbs.	10046-lbs.	12687-lbs.
Cargo Carrying Capacity	2898-lbs.	3600-lbs.	3959-lbs.	2965-lbs.	4145-lbs.	5487-lbs.	4287-lbs.	4999-lbs.
Exterior Length	25'-0"	31'-0"	33'-7"	36'-10"	39'-3"	33'-2"	38'-8"	39'-9"
Exterior Height w/ AC	12'-5"	12'-5"	12'-5"	12'-5"	12'-5"	12'-5"	13'-5"	13'-5"
Exterior Width	102"	102"	102"	102"	102"	102"	102"	102"
Garage Length	14'-6"	14'-6"	6'-11"	12'-6"	12'-6"	16'	13'	13'
Grey Capacity	38-Gal.	38-Gal.	76-Gal.	38-Gal.	38-Gal.	38-Gal.	38-Gal.	38-Gal.
Black Capacity	38-Gal.	38-Gal.	38-Gal.	38-Gal.	76-Gal.	38-Gal.	76-Gal.	76-Gal.
Fresh Capacity	46-Gal.	46-Gal.	46-Gal.	46-Gal.	46-Gal.	100-Gal.	100-Gal.	100-Gal.
Awning	15'	15'	15'	15'	15'	15'	21'	12' & 12'

GVWR (Gross Vehicle Weight Rating) - is the maximum permissible weight of the unit when fully loaded. It includes all weights, inclusive of all fluids, cargo, optional equipment and accessories. For safety and product performance do NOT exceed the GVWR.

GAWR (Gross Axle Weight Rating) - is the maximum permissible weight, including cargo, fluids, optional equipment and accessories that can be safely supported by a combination of all axles.

UVW (Unloaded Vehicle Weight)* - is the typical weight of the unit as manufactured at the factory. It includes all weight at the unit's axle(s) and tongue or pin and LP Gas. The UVW does not include cargo, fresh potable water, additional optional equipment or dealer installed accessories.

*Estimated Average based on standard build optional equipment.

CCC (Cargo Carrying Capacity)** - is the amount of weight available for fresh potable water, cargo, additional optional equipment and accessories. CCC is equal to GVWR minus UVW.

Available CCC should accommodate fresh potable water (8.3 lbs per gallon). Before filling the fresh water tank, empty the black and gray tanks to provide for more cargo capacity.

**Estimated average based on standard build optional equipment

Each Forest River RV is weighed at the manufacturing facility prior to shipping. A label identifying the unloaded vehicle weight of the actual unit and the cargo carrying capacity is applied to every Forest River RV prior to leaving our facilities. The load capacity of your unit is designated by weight, not by volume, so you cannot necessarily use all available space when loading your unit.

XLR Boost by Forest River

2421 Century Drive ■ Goshen, IN 46528 ■ E-mail: XLRinfo@forestriverinc.com
 Phone: 574-642-0438 ■ www.forestriverinc.com/XLR
www.forestriveraccessories.com ■ [#XLRtoyhaulers](https://twitter.com/XLRtoyhaulers)



Learn More
Scan this barcode using
a QR Reader on your
smart phone to learn
more about Forest River.

