

Limited

Cardinal

BY FOREST RIVER



EXQUISITELY CRAFTED AND GRANDLY APPOINTED





3600DVLE

SHOWN IN JAVA DECOR





3900FLE

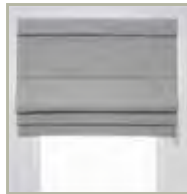
SHOWN IN GRANITE DECOR



**CARDINAL
LIMITED
FEATURES**



THEATER SEAT WITH LIGHT AND MASSAGE



RESIDENTIAL ROMAN SHADES



CATHEDRAL CEILINGS THROUGHOUT



FURRION STAINLESS STEEL APPLIANCES



RESIDENTIAL DENVER MATTRESS



SOLID WOOD CABINET DOOR WITH SOFT CLOSING HIDDEN HINGES



DOMETIC WHISPER QUIET AC



USB PORTS



HIDDEN LIFT UP TV STORAGE WITH 50" TV (MOST MODELS)



LG SOLID SURFACE KITCHEN COUNTERTOPS WITH STAINLESS STEEL SINK



LED LIGHT STRIPS (AWNING, ISLAND, AND ABOVE CABINETS)



ALUMINUM ENTRY STEPS



MORRYDE CRE 3000 SUSPENSION



FANTASTIC FAN WITH RAIN SENSOR IN KITCHEN



FURRIION OBSERVATION CAMERA SYSTEM PREP ON REAR AND BOTH SIDES OF UNIT



DROP FRAME PASS THRU STORAGE



DEXTER NEVER-ADJUST BRAKES



G RANGE TIRES AND 7K DEXTER AXLES

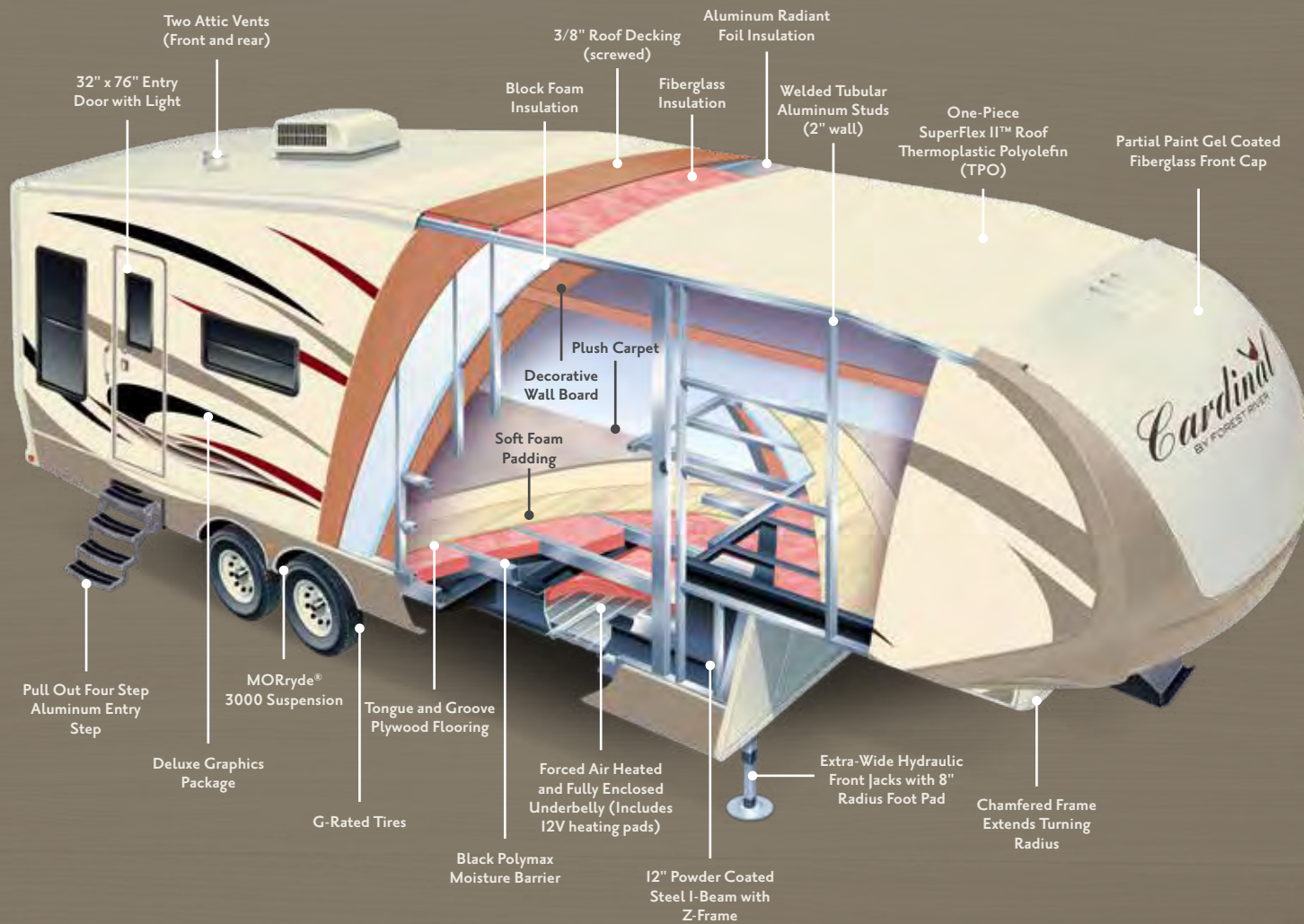


SLAM LATCH BAGGAGE DOORS



AERODYNAMIC FRONT CAP WITH 6" UPPER DECK INTERIOR CEILING HEIGHTS

WIDE BODY CONSTRUCTION



STANDARDS & OPTIONS

STANDARDS

CONSTRUCTION

- Roof: Alpha Superflex Membrane
- Front Wall: Welded Aluminum Frame
- Rear Wall: 2" Welded Aluminum Frame Vacuum Bonded Laminated Wall
- Main Floor: Tongue and Groove Plywood Floor
- Bath/Bed Floor Deck: Welded Aluminum Frame
- Slide Floor: 1" Wood Flooring
- Slide End Walls: 2" Welded Aluminum Frame, Laminated
- Upper Deck: 6' III" Full Profile Height
- Slide Height: 6' 5" Height
- I-Beam "Z" Frame Powder Coated Chassis
- Hydraulic Front Jacks
- Electric Rear Jacks
- Hydraulic Slide System with 2.5" Steel Rams
- Hydraulic Pump Station with Manual Overrides

INSULATION

- Sidewalls: High Density Block Foam Insulation (R-9)
- Roof: Aluminum Radiant Foil Insulation and Fiberglass Insulation (R-38)
- Main Floor: Fiberglass and Radiant Foil Insulation (R-38)
- Sub Floor: 1/4" Honey Combed Plastic with Aluminum Radiant Foil Insulation and Direct Forced Air
- Front Cap: Fiberglass Insulation and Aluminum Radiant Foil Insulation (R-38)
- End Wall: High Density Block Foam Insulation (R-9)

EXTERIOR

- High-Gloss Premium Oyster Fiberglass Exterior
- Front Cap: Molded, Two Color Painted High Gloss Gel Coat Fiberglass with LED Lights
- Front Cap: Engineered with Extended Turning Radius
- Laminated Front Bulkhead with Oyster Performance Fiberglass
- Laminated Slide End Walls
- 32" x 76" Entry and Screen Door
- 45° Angled Skirting
- Roof Ladder
- XL-Folding Entry Assist Handle
- Roto-Cast Spun Seamless Water/Waste Tanks
- PEX Plumbing System
- LP Quick Disconnect
- Exterior Speakers
- Slide Room Seal and Gasket System
- Aluminum "H" Frame Slide Room Perimeter
- Dual Neoprene Squeegee Seals
- Exterior and Interior "D" Seals
- Exterior "H" Seals
- Aluminum Entry Steps

UTILITY DOCKING COMPARTMENT

- 12 V Light
- Outside Shower
- Black Tank Flush
- Water Heater Bypass Valve (Quick Winterization) Interior

KITCHEN/LIVING AREA

- Ball Bearing, Full Extension Drawer Guides
- Armstrong® Flooring
- Shaw® Residential Carpet
- Residential Contemporary Cabinet Hardware and Accents
- Satin Nickel Plumbing Fixtures
- Decorative Slide Room Fascia
- Solid Wood Exit Assist Handle
- 15,000 BTU Ducted Air Conditioning
- Wire/Brace for 2nd A/C
- Farm House Kitchen Sink
- High Rise, Pull Out, Stainless Steel Bullet Kitchen Faucet
- Flush Floor Kitchen Slide Out
- Ceiling Fan in Living Room
- Residential Sized Pantry (Most Models)
- Free Standing Dinette and (2) Chairs with Flip Up Storage, (2) Storage Foldable Chairs
- Residential Three Seat Rear Sofa with Tri-Fold Hide-A-Beds
- Theater Seat w/ Lights and Massage
- 40" Electric Fireplace (Most Models)

APPLIANCES AND ELECTRONICS

- Furrion® 2-in-1 21" Oven/Range with LED Knob Indicators
- 35,000 BTU Furnace
- 50" LED TV (Most Models)
- 20 cu ft. Residential Refer with Inverter

- LP Leak Detector
- Carbon Monoxide Detector

BEDROOM

- Denver Mattress
- Designer Bedspread, Pillows and Sham
- Full Height Hanging Wardrobe
- Washer/Dryer Dual Electrical Outlets (Operates Washer/Dryer at same time)
- Chest of Drawers
- Under Bed Storage
- 2 Reading Lights w/Individual Controls
- 2 Bed Side Power Outlets
- Night Stands with 2 USB Ports

BATHROOM

- 12 V Power Roof Vent
- Porcelain Toilet with Foot Flush
- Residential Mega Shower
- Sliding, Glass Shower Door
- Shower Skylight/Dome
- Residential Sized Wall Mirror

LIGHTING

- LED Running and Tail Lights
- LED Lighting Throughout
- Decorative Ceiling Light above Dinette
- Hanging Pendant Lights above Kitchen Sink
- Exterior LED Docking Lights

ELECTRICAL SYSTEMS

- Satellite & Cable TV Hook-Up
- Centralized Command Center and Monitor Panel
- 70 AMP Converter with Charge Wizard
- Battery Prep Box (2)

TOWING

- Front Cap: Engineered with Extended Turning Radius
- 8" Lug Hubs
- Spare Tire

OPTIONS

- Low Profile 13.5K A/C in Bedroom
- Generator Prep
- Bike Hitch
- 6 Point Hydraulic Auto Level
- 18 cu ft. 4 Door G/E Refer
- Slide Out Awnings (3,4,5)
- Winegard Connect 2.0 4G LTE and WiFi Extender

PACKAGES

ESSENTIAL CARDINAL CAMPING PACKAGE

- LG Solid Surface Kitchen Countertops
- Stainless Steel XL Single Bowl Sink
- Jensen AM/FM/CD/AUX/DVD/USB/Bluetooth Stereo
- Residential High Rise "Bullet" Faucet
- Winegard Wifi/4G Prep

EXTENDED SEASONS CAMPING PACKAGE

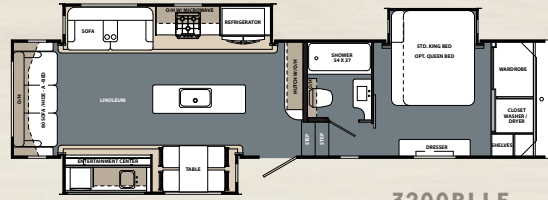
- 12V Heat Pads with Underbelly Ducted Heat
- 35k BTU Furnace
- 15k BTU whisper quiet A/C
- Prep for 2nd Whisper Quiet A/C
- Exterior Ventilated Attic
- Ceiling Fan
- Electric Fireplace
- Full Pass Through Front Storage with Heat
- Sidewalls: High Density Block Foam Insulation (R-9)

- Roof: Fiberglass and Foil Insulation (R-38)
- Floor: High Density Block Foam and Foil Insulation (R-38)

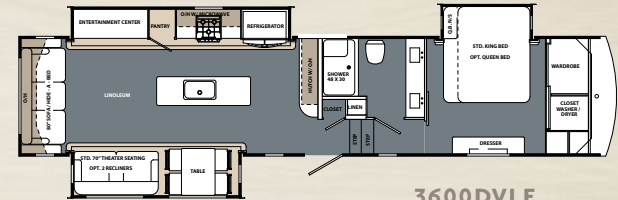
CARDINAL LIMITED PACKAGE

- Wide Body Construction (100" wide)
- All Welded Aluminum Structure
- 2" Laminated and Aluminum Framed Sidewalls
- 10 Gal. Quick Recover GVE Water Heater
- Electric Awning with LED light Strip
- 7K Dexter Axles w/Nev-R-Adjust Brakes
- G-Rated Tires on I6" Aluminum Rims
- Mor/Ryde 3000 Suspension
- 50 AMP Service with Detachable Cord
- 12V Battery Disconnect Switch
- Residential Roman Shade
- 30" Microwave Oven
- LG® Solid Surface Kitchen Countertops
- Stackable Washer Dryer Prep
- Hydraulic Slide Outs
- Slam Latch Baggage Doors
- Cathedral Ceiling with Crown Molding
- Solar Panel Prep
- 72" X 80" Queen Bed with II Outlets on Both Sides
- Exterior Backup Camera Prep
- King HDTV Antenna

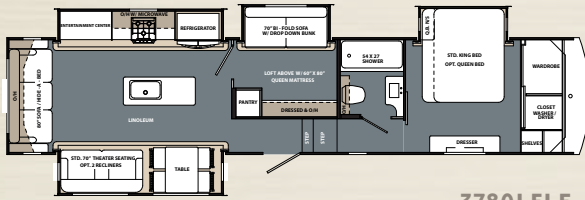
CARDINAL LIMITED FLOORPLANS



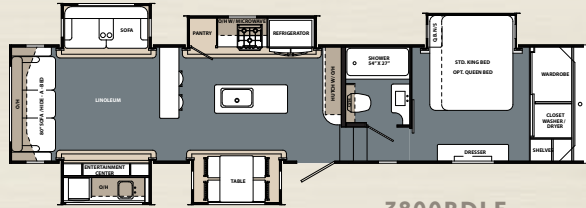
3200RLE



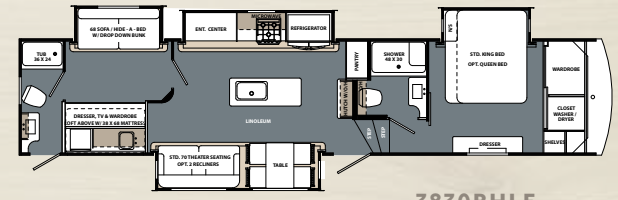
3600DVLE



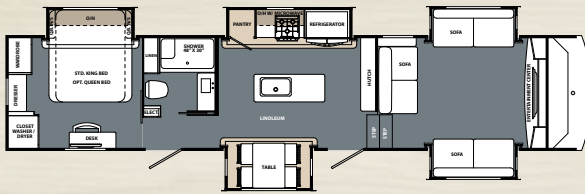
3780LFLE



3800RDLE



3830BHLE



3900FLE

EXTERIOR KITCHEN

3200RLE - 3800DVLE - 3830BHLE



2019 CARDINAL LIMITED

	3200RLE	3600DVLE	3780LFLE	3800RDLE	3830BHLE	3900FLE
LENGTH (center of pin to rear of back wall)	37'-2"	40'-2"	40'-2"	40'-2"	TBD	41'-4"
UVW	11949	12541	13199	13277	TBD	13147
HITCH WEIGHT	2030	2104	2280	2347	TBD	2367
GVWR	16030	16104	16280	16347	TBD	16367
CARGO CARRYING CAPACITY	4081	3559	3081	3070	TBD	3220
EXTERIOR HEIGHT	13' 6"	13' 6"	13' 6"	13' 6"	13' 6"	13' 6"
EXTERIOR WIDTH	100"	100"	100"	100"	100"	100"
TIRE SIZE	16"	16"	16"	16"	16"	16"
FRESH WATER	64 GAL.	64 GAL.	64 GAL.	64 GAL.	64 GAL.	64 GAL.
WASTE WATER	135 GAL.	110 GAL.	110 GAL.	135 GAL.	TBD	110 GAL.
PATIO AWNING	16'	19'	18'	18'	TBD	6'6" and 14'



PRE-DELIVERY INSPECTION FACILITY

20,000 square feet of quality assurance. The bare essentials for a premium product. This state-of-the-art facility gives immediate daily feedback to production for quality assurance in every unit built.

CUSTOMER SATISFACTION



www.ForestRiverBuyLocal.com

**24/7 EMERGENCY
ROADSIDE ASSISTANCE
WITH VEHICLE PURCHASE***

TOWING	WINCH-OUT
JUMP-STARTS	MOBILE MECHANIC
TIRE CHANGES	TECHNICAL SUPPORT
FLUID DELIVERY	DEALER LOCATOR
LOCKOUT SERVICE	SERVICES

SAFERIDERV
MOTOR CLUB

*VALID FOR 1 YEAR FROM DATE OF PURCHASE

FREE MEMBERSHIP
to Forest River Owners' Group



www.forestriverfrog.com

GVWR (Gross Vehicle Weight Rating) - is the maximum permissible weight of the unit when fully loaded. It includes all weights, inclusive of all fluids, cargo, optional equipment and accessories. For safety and product performance do NOT exceed the GVWR.

GAWR (Gross Axle Weight Rating) - is the maximum permissible weight, including cargo, fluids, optional equipment and accessories that can be safely supported by a combination of all axles.

UVW (Unloaded Vehicle Weight)* - is the typical weight of the unit as manufactured at the factory. It includes all weight at the unit's axle(s) and tongue or pin and LP Gas. The UVW does not include cargo, fresh potable water, additional optional equipment or dealer installed accessories.

*Estimated Average based on standard build optional equipment.

CCC (Cargo Carrying Capacity)** - is the amount of weight available for fresh potable water, cargo, additional optional equipment and accessories. CCC is equal to GVWR minus UVW. Available CCC should accommodate fresh potable water (8.3 lbs per gallon). Before filling the fresh water tank, empty the black and gray tanks to provide for more cargo capacity.

** Estimated average based on standard build optional equipment

Each Forest River RV is weighed at the manufacturing facility prior to shipping. A label identifying the unloaded vehicle weight of the actual unit and the cargo carrying capacity is applied to every Forest River RV prior to leaving our facilities.

The load capacity of your unit is designated by weight, not by volume, so you cannot necessarily use all available space when loading your unit.

All information contained in this brochure is believed to be accurate at the time of publication. However, during the model year, it may be necessary to make revisions and Forest River, Inc., reserves the right to make all such changes without notice, including prices, colors, materials, equipment and specifications as well as the addition of new models and the discontinuance of models shown in this brochure. Therefore, please consult with your Forest River dealer and confirm the existence of any materials, design or specifications that are material to your purchase decision.



Learn More

Scan this barcode using a QR Reader on your smart phone to learn more about Forest River.



A Berkshire Hathaway company.

CARDINAL

3603 S. Nappanee St, Elkhart, IN 46517
(574) 296-7700
www.forestriverinc.com/Cardinal
www.forestriveraccessories.com

YOUR LOCAL CARDINAL DEALER