

LUXURIOUS EXTENDED STAY

CEDAR CREEK

FIFTH WHEEL FLOORPLANS



Cedar Creek is dedicated to enhancing the joy of the outdoors and your peace of mind, by building better quality recreational vehicles designed to withstand rugged road conditions and extreme temperatures.

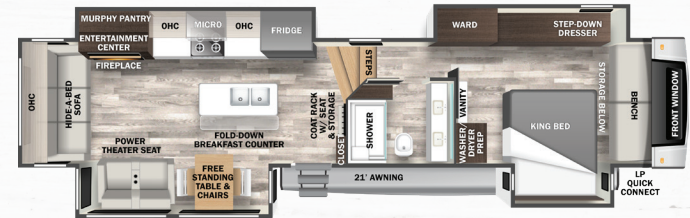
The Smart Choice for the Experienced RVer



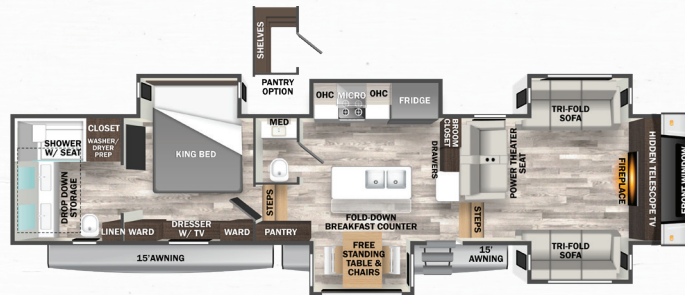
SCAN THE QR CODE WITH YOUR DEVICE
FOR MORE CEDAR CREEK INFORMATION AND VIDEO TOURS



360RL



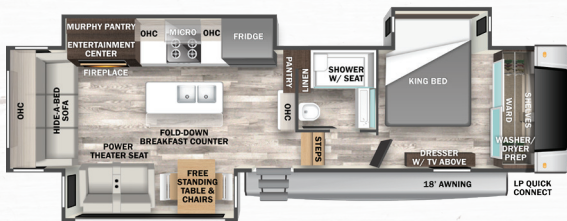
380RL



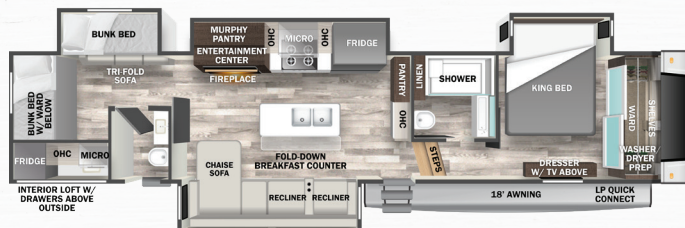
371FL



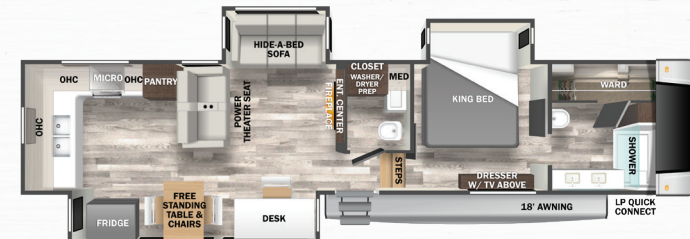
385TH



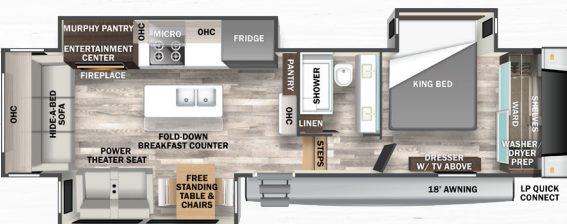
311RL



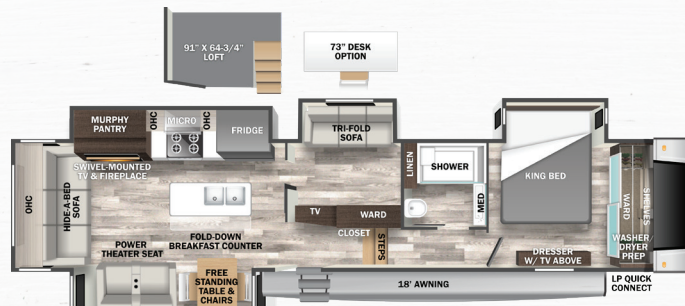
375BHO



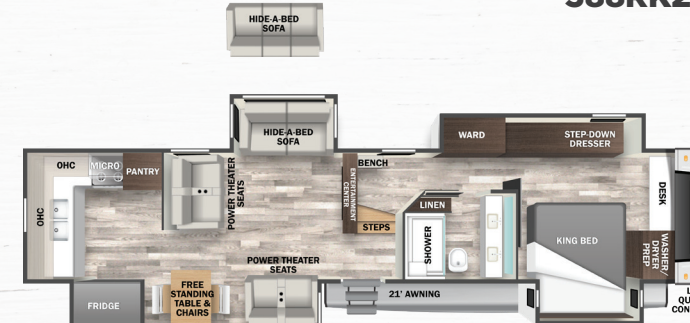
388RK2



345IK



377BH



390RK

FIFTHWHEELS STANDARD FEATURES & OPTIONS

ADVANTAGE PACKAGE (Mandatory Features)

- Cedar Creek's Famous All Aluminum Superstructure - 16" on Centers or Less True Gelcoat, Painted, Front Cap
- "True" High Gloss Gelcoat Exterior (The Best of the Best in Exteriors)
- Vegatouch Control Panel and Firefly Dimmer Switches with Wireless Connectivity to Your Phone
- 4'x6' ABS Removeable Underbelly Panels
- Extra Wide Friction Entry Door
- Heated Storage Compartment with Diamond Tread Flooring
- Dexter Nev-R-Adjust Brakes
- Road Armor™ Suspension with Wet Bolts and Bronze Bushings
- TST™ Tire Pressure Monitoring System
- 12v. Heating Pads on all Tanks
- Automatic 6-Point Hydraulic Leveling System
- Mid-Ship Turn Signals
- New Ultra Slim, Rear Brake Lights
- MorRyde® Power Easy Reel
- 200 Watt Go Power Solar Panel
- Deep Cell Battery

CONVENIENCE PACKAGE

- 5-Tier MorRyde® Easy-Steps™
- 2" Bike Rack Receiver - N/A 371FL, 385TH
- Slam Latch Baggage Doors with Magnetic Catches
- Animal Leash Latch
- 12 Gallon LP/110V Hot Water Heater with Bypass Kit
- (2) Air Conditioners with Dual Zone Control
- King WiFi Router/Range Extender
- USB Ports Throughout
- Prepped for an Optional Washer and Dryer
- InterVac Central Vacuum System with Front Storage Compartment Port and Interior Automatic Dustpan
- Solid Surface Countertops with Stainless Steel Under-mounted Sinks
- Free Standing 24" Gas Range
- Smart Television with Swing Arm in Living area
- Bluetooth Connectivity Speaker

- Deluxe Day/Night Roller Shades (Night Shades in Bedroom Only)
- 20 Cu. Ft. Stainless Steel Refrigerator with Icemaker and dedicated inverter
- Variable Speed, Power Fan with Rain Sensor override in Kitchen area
- New Decorative Shower head in the Bathroom

STANDARD FEATURES

EXTERIOR

- 3M® Bonded Sidewalls - resilient, with outstanding resistance to UV, heat, cold, moisture, oils, gasoline, highway chemicals. Creates a bond that grows stronger with age and resists delamination
- 21,000 Lb. Rhino Box Hitch
- Z-frame with Metal Wrapped Skirting to the Frame
- Hehr Frameless, Tinted Automotive Style Windows
- Lionshead Special Trailer (ST) Tires with "No Excuses" One Year Guarantee!
- Full, Walk-on Roof with Alpha-Ply TPO Membrane with Lifetime warranty
- Electric Awning with Upgraded Fabric and LED Night Lights
- Full Docking Station with Multi-function Tank Levers, Outside Shower, Black Tank Flush, 12V Battery Disconnect Door Side, Cold Water Port
- Quick Disconnect Exterior LP Gas Connection
- Mini Outdoor Kitchen area with Mini Fridge and Slide Out Grill (375BHO, 377BH Only)
- One Year of Saferide™ RV Roadside Assistance
- Free Membership to Forest River Owners Group (F.R.O.G.)

ELECTRONICS

- 32" Television in the Bedroom
- (2) Exterior Satellite and Cable Hook-ups to Bedroom and Living Room
- Prewired for Satellite to the Roof
- Prewired for Rear camera

KITCHEN AND LIVING AREA

- Two Tone Cabinet Doors and Fascia in Kitchen and Living Room

- LED Lighting Fixtures
- Murphy Pantry
- Residential, High Top, Swivel, Kitchen Faucet with Pull-out Sprayer
- Stainless Steel, 30" Over the Range Microwave Oven
- Full Panel Backsplashes (Where applicable)
- Natural Satin Free Standing Table with (4) Chairs (2 Folding / 2 stationary with hidden storage)
- Vinyl Floor Covering
- Hide-a-Bed Sofa (where applicable)
- Power Theater seating with USB Ports (where applicable)
- Decorative Fireplace with Natural Wood Mantel

BATHROOM

- Full 48" x 30" Rectangular Shower with Large Seat and Sliding Glass Doors
- Large Single or Double Faucet Sinks with White Cabinetry
- Skylight Over the Shower
- Upgraded Shower Head
- 18" High Porcelain Toilet with Top Circular Flush System
- Create-A-Breeze Circulation Fan
- Convenient Wall Switches for Fan and Lights
- Extra Storage for Linens
- LED Night Lighting Under the Vanity

BEDROOM

- Black-out Night Shades (Bedroom only)
- Individual Reading Lighting Above the Bed
- USB Plug-ins on Each Side of the King Bed
- Standard 72" x 80" King Bed (N/A 385TH)
- Flip-Up Dresser Top with Hidden Storage
- Storage Area Under the Bed

OPTIONAL FEATURES

EXTERIOR

- 21,000 Lb. Curt™ Air Ride Hitch
- Dual Pane Frameless, Tinted Windows *included Champagne Package
- Furrion Rear Observation or (4) Camera Security Systems
- Slide-out Awning Toppers

- 12' THULE® Power Awning on Dining Slide (N/A 371FL, 385TH)
- Heat Pump on Main Air Conditioner
- Truma™ On-Demand Hot Water System *included Champagne Package
- Full Body Paint Package
- LP Generator Prep * included Champagne Package
- 5.5K Onan Marquis Gold LP Generator with Prep
- King, Roof Mounted Satellite - My Dish RV Flexible Programming Including Local Channels

KITCHEN

- 16.2 cu ft, 12vt. Refrigerator
- 30" Convection/Microwave
- Dishwasher in the Island (N/A 385TH, 371FL, 388RK2)
- Cedar Creek Outdoor Party Center in Front Storage Compartment (N/A 385TH, 371FL, 377BH)

BEDROOM

- Upgraded Luxury King Bed
- Upgraded Luxury Queen Bed
- Optional Side-by-Side Washer/Dryer
- Cadet Wall Mounted Heater with Circulation Fan

CHAMPAGNE PACKAGE*

- Disc Brakes
- Rear Fiberglass Cap (N/A 371FL, 385TH)
- Generator Prep
- Truma On Demand, Water Heater
- Safe
- Upgraded Mattress
- Upgraded Bedroom Package
- Macerator Toilet
- Champagne Graphic Package
- Upgraded Island Lighting
- 3rd AC
- Upgraded Vegatouch "Eclipse" Module with Multiplex System Capabilities
- Wood Lambrequins
- Remote entry lock
- Dual Pane Windows

"OFF THE GRID" POWER PACKAGES

LITHIUM 200X PACKAGE

- 2 100amp Hr Mastervolt Ultra 12/1250 1.25 kWh Li Batteries
- Combimaster 12/2000-100 120V Inverter/Charger
- EasyView 5" touchscreen
- Masterbus USB Interface
- 400watts Go Power Solar
- MPPT 30 Solar Controller

460XL POWER PACKAGE

- 1 460amp Hr Mastervolt Ultra 12/6000 Li Battery
- Combi Master 12-3500 200A 120V Inverter/Charger
- EasyView 5" Touchscreen
- Masterbus USB Interface
- 800watts Go Power Solar
- MPPT Solar ChargeMaster 60

SPECIFICATIONS	311RL	345IK	360RL	371FL	375BHO	377BH	380RL	385TH	388RK2	390RK
Hitch Weight	2,435 lb.	2,190 lb.	2,525 lb.	2,615 lb.	2,430 lb.	2,135 lb.	2,790 lb.	3,176 lb.	2,205 lb.	2,665 lb.
GVWR	14,435 lb.	16,190 lb.	16,525 lb.	16,615 lb.	16,430 lb.	16,135 lb.	18,790 lb.	18,000 lb.	18,205 lb.	18,000 lb.
UVW	11,244 lb.	12,224 lb.	13,134 lb.	13,564 lb.	14,209 lb.	12,679 lb.	14,389 lb.	14,190 lb.	12,439 lb.	14,909 lb.
CCC	3,191 lb.	3,966 lb.	3,391 lb.	3,051 lb.	2,221 lb.	3,456 lb.	4,401 lb.	3,810 lb.	5,766 lb.	3,091 lb.
Exterior Length	37' 0"	38' 10"	40' 7"	41' 11"	43' 1"	42' 5"	42' 10"	42' 4"	42' 0"	43' 2"
Exterior Height	13' 5"	13' 5"	13' 5"	13' 5"	13' 5"	13' 5"	13' 5"	13' 5"	13' 5"	13' 5"
Exterior Width	96"	96"	96"	96"	96"	96"	96"	96"	96"	96"
Fresh Water	57 gal.	57 gal.	57 gal.	57 gal.	57 gal.	57 gal.	57 gal.	57 gal.	57 gal.	57 gal.
Gray Water	82 gal.	82 gal.	82 gal.	82 gal.	82 gal.	82 gal.	82 gal.	82 gal.	82 gal.	82 gal.
Black Water	41 gal.	41 gal.	41 gal.	82 gal.	82 gal.	41 gal.	41 gal.	41 gal.	82 gal.	41 gal.
Awning Size	18'	18'	18'	15' & 15'	18'	18'	21'	18'	18'	21'

*Champagne option adds rear cap that extends unit 10"

GVWR (Gross Vehicle Weight Rating) - is the maximum permissible weight of the unit when fully loaded. It includes all weights, inclusive of all fluids, cargo, optional equipment and accessories. For safety and product performance do NOT exceed the GVWR. GAWR (Gross Axle Weight Rating) - is the maximum permissible weight, including cargo, fluids, optional equipment and accessories that can be safely supported by a combination of all axles. UVW (Unloaded Vehicle Weight) - is the typical weight of the unit as manufactured at the factory. It includes all weight at the unit's axles and tongue or pin and LP Gas. The UVW does not include cargo, fresh potable water, additional optional equipment or dealer installed accessories. *Estimated Average based on standard build optional equipment. CCC (Cargo Carrying Capacity) - is the amount of weight available for fresh potable water, cargo, additional optional equipment and accessories. CCC is equal to GVWR minus UVW. Available CCC should accommodate fresh potable water (8.3 lbs per gallon). Before filling the fresh water tank, empty the black and gray tanks to provide for more cargo capacity. **Estimated average based on standard build optional equipment. Each Forest River RV is weighed at the manufacturing facility prior to shipping. A label identifying the unloaded vehicle weight of the actual unit and the cargo carrying capacity is applied to every Forest River RV prior to leaving our facilities. The load capacity of your unit is designated by weight, not by volume, so you cannot necessarily use all available space when loading your unit.



Learn More
Scan the barcode using
a QR Reader on your
smart phone to learn
more about Forest River.



FOREST RIVER INC. CEDAR CREEK DIVISION

501 Hawpatch Road • Topaka, IN 46571

Phone: 260-593-4013 • Parts & Service Phone: 260-593-4000

On The Web: www.forestriverinc.com/cedarcreek



YOUR LOCAL CEDAR CREEK DEALER: