

WILDCAT

BY FOREST RIVER



WILDCAT FEATURE PACKAGES

WILDCAT PEAK PACKAGE

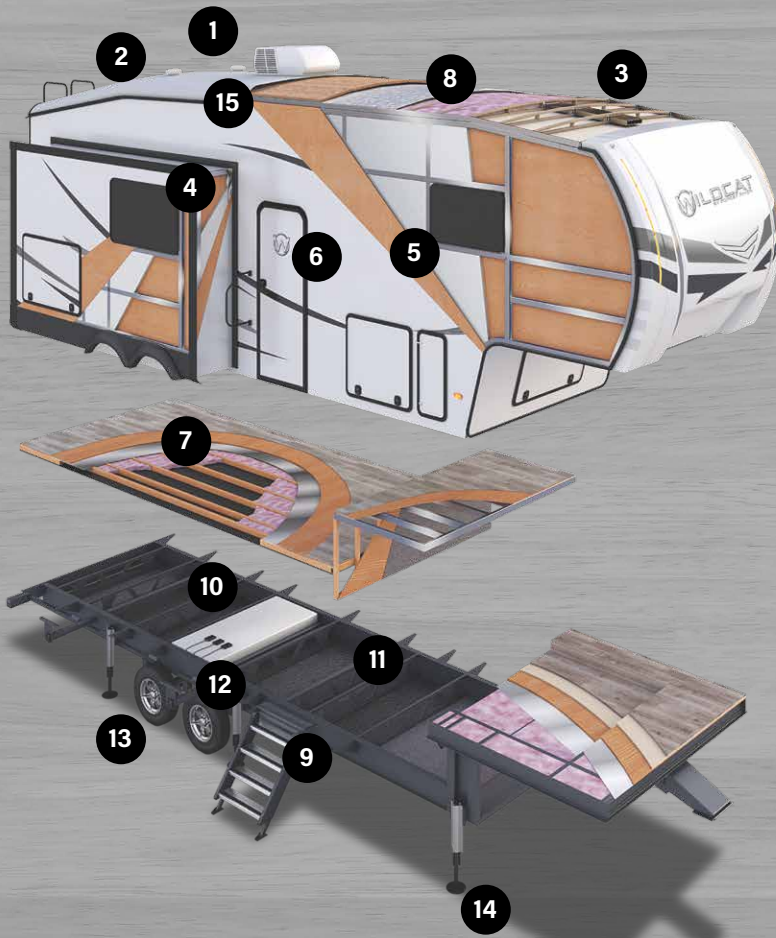
- Large Single Bowl, Stainless Steel Sink and Bullet Faucet
- 21" 2-in-1 Oven Range
- 1.6 CU FT OTR Microwave
- 60 Gal or More Fresh Water Capacity
- 17 CU FT 12v Refrigerator
- Huge Pantry with Drawers (Most Models)
- Huge Lift-Up Booth Dinette Storage
- XL 48" x 30" Shower
- Massive Pass-Thru Storage
- Porcelain Toilet
- Quad Solid Step at Main Entry
- Built-in TP Holder with Storage
- 32" Entry Door with Friction Hinge
- (2) Flip-Up Nightstands
- Tinted Windows

DYNAMIC TECHNOLOGY PACKAGE

- Vacuum Bonded, Welded Aluminum Structure
- Rear Observation Camera Prep
- Easytec Convenience Center Panel with Bluetooth Controls
- Portable Ladder Prep Bracket For On-The-Go Portable Ladder
- Winegard 360+ (FM, TV Antenna with 4G & Wifi Extender Prep)
- Ground Control 3.0 Automatic Leveling
- Washer and Dryer Prepped
- Dual Awnings
- Dual Battery Prep
- Aluminum Roof Wrap
- Exterior TV Hookup with TV Bracket
- 2" Accessory Receiver
- Battery Disconnect Switch
- 100% Linoleum Interior

MAXX INSULATION PACKAGE

- 12v Heat Pads with Underbelly Ducted Heat
- 35,000 BTU Furnace
- 15,000 BTU Ducted A/C System with 2nd 15k A/C Prep
- 12,000 BTU Rapid Recover G/E 6 Gal Water Heater (10 Gal/Hr with Gas and Electric)
- Exterior Ventilated Attic Vents for Breathable Roof
- Electric Fireplace with Thermostat Control and Remote
- Tufflex PVC Roof Membrane
- Underbelly Armor ABS Underbelly Panels
- 50 Amp Electric
- Dual 30-lb. LP Tanks
- Sidewalls: 2" High Density Block Foam Insulation
- Roof: Residential and Foil Insulation
- Floor: Residential & Foil Insulation with 5/8" Tongue & Groove Plywood

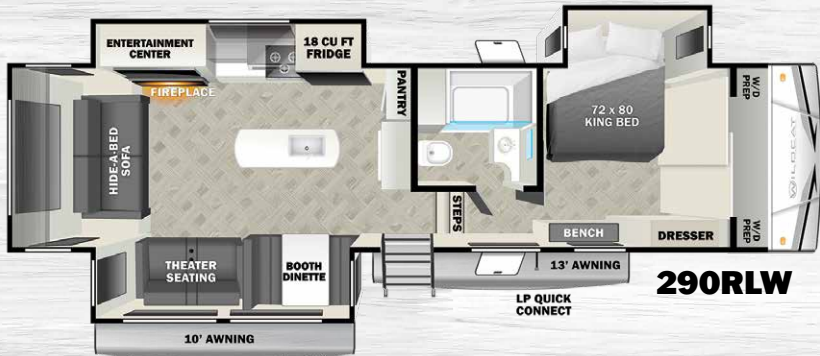


WILDCAT CONSTRUCTION

EXTERIOR FEATURES

1. Exterior Ventilated Attic for Breathable Roof
2. PVC Roof Membrane with Lifetime Warranty
3. 3/8" Plywood Roof Decking for Fully Walkable Roof Construction
4. 2" Thick Vacuum Bonded Main Sidewalls and Slide Boxes
5. Aluminum Framed Window, Door, and Slide openings for Max Strength
6. 32" x 76" Extra Large Entry Door
7. 5/8" Tongue & Groove Plywood Main and Upper Floor Decking
8. Batten Insulation and Radiant Foil in Roof, Floor and Cap
9. Solid 4-Step Entry Steps
10. 12V Tank Heaters in Sub Floor
11. Underbelly Armor for Best in Class Protection (4' ABS Panels)
12. 6,000 lbs. Dexter Axles with Nev-R-Adjust Brakes
13. E-Range Tires
14. 4-Point Electric Auto Leveling System
15. Roof Mounted Solar Panel (Standard)

FLOORPLANS



290RLW



353BHLW



353BHLW



290RLW



363DVW



363DVW



369MBL



369MBL



Scan for additional specs, photos, videos, 360° virtual tours, and more!

SPECIFICATIONS	290RLW	353BHLW	363DVW	369MBL
Hitch Weight	1,710 lb.	1,965 lb.	2,155 lb.	2,135 lb.
UVW	10,129 lb.	12,749 lb.	11,239 lb.	11,509 lb.
CCC	3,581 lb.	1,216 lb.	2,916 lb.	2,626 lb.
Length	35' 6"	43' 7"	40' 11"	42' 7"
Height	13' 3"	13' 3"	13' 3"	13' 3"
Fresh Water	60 gal.	60 gal.	60 gal.	46 gal.
Gray Water	45 gal.	121 gal.	45 gal.	66 gal.
Black Water	45 gal.	83 gal.	45 gal.	36 gal.
Awning(s)	13' & 10'	15' & 10'	17' & 11'	19' & 11'



PRE-DELIVERY INSPECTION FACILITY
20,000 square feet of quality assurance. The bare essentials for a premium product. This state-of-the-art facility gives immediate daily feedback to production for quality assurance in every unit built.

GVWR (Gross Vehicle Weight Rating) - is the maximum permissible weight of the unit when fully loaded. It includes all weights, inclusive of all fluids, cargo, optional equipment and accessories. For safety and product performance do NOT exceed the GVWR.

GAWR (Gross Axle Weight Rating) - is the maximum permissible weight, including cargo, fluids, optional equipment and accessories that can be safely supported by a combination of all axles.

UVW (Unloaded Vehicle Weight) - is the typical weight of the unit as manufactured at the factory. It includes all weight at the unit's axle(s) and tongue or pin and LP Gas. The UVW does not include cargo, fresh potable water, additional optional equipment or dealer installed accessories.*

*CCC (Cargo Carrying Capacity)** - is the amount of weight available for fresh potable water, cargo, additional optional equipment and accessories. CCC is equal to GVWR minus UVW. Available CCC should accommodate fresh potable water (8.3 lbs per gallon). Before filling the fresh water tank, empty black and gray tanks for more cargo capacity.*

**Estimated Average based on standard build optional equipment. ** Estimated average based on standard build optional equipment. Values estimated at time of printing.*

Each Forest River RV is weighed at the manufacturing facility prior to shipping. A label identifying the unloaded vehicle weight of the actual unit and the cargo carrying capacity is applied to every Forest River RV prior to leaving our facilities. The load capacity of your unit is designated by weight, not by volume, so you cannot necessarily use all available space when loading your unit.

All information contained in this brochure is believed to be accurate at the time of publication. However, during the model year, it may be necessary to make revisions and Forest River, Inc., reserves the right to make all such changes without notice, including prices, colors, materials, equipment and specifications as well as the addition of new models and the discontinuance of models shown in this brochure. Therefore, please consult with your Forest River, Inc., dealer and confirm the existence of any materials, design or specifications that are material to your purchase decision.

©2023 Wildcat, a division of Forest River Inc., a Berkshire Hathaway company.

CUSTOMER SATISFACTION



www.ForestRiverBuyLocal.com

Download our Forest River mobile app or visit our dynamic online manual to enhance your ownership experience. These interactive options provide incredible ease and insight into use, maintenance and enjoyment of your Forest River product.

Ranging from "How-To" videos, pictures and illustrations of various components, systems and features, to fully searchable content and downloadable PDFs for individual component owner's manuals, answers are always just a click away. View the online manual at www.forestriverinc.com/OnlineManual or download our FREE app from the App Store or Google Play!



FREE MEMBERSHIP
to Forest River Owners' Group

www.forestriverfrog.com



Learn More
Scan this barcode using a QR Reader on your smart phone to learn more about Forest River.



A Berkshire Hathaway company.

**24/7 EMERGENCY
ROADSIDE ASSISTANCE
WITH VEHICLE PURCHASE***

TOWING	WINCH-OUT
JUMP-STARTS	MOBILE MECHANIC
TIRE CHANGES	TECHNICAL
FLUID DELIVERY	SUPPORT
LOCKOUT SERVICE	DEALER LOCATOR SERVICES

*VALID FOR 1 YEAR FROM DATE OF PURCHASE