

FIFTH WHEELS & COTTAGES



LUXURIOUS EXTENDED STAY



20

23

# BACK TO BASICS

CEDAR CREEK CONSTRUCTION STORY





# IF IT'S WHAT'S INSIDE THAT COUNTS, YOU'RE GONNA NEED A BIGGER ADDING MACHINE

SEE HOW THE SMARTEST CHOICE STACKS UP TO THE COMPETITION



Go Power solar panel - standard

**ROOFING**  
PAGE 10

**CABINTRY**  
PAGE 8

**AXLES**  
PAGE 4

Metal wrap all the way to the frame



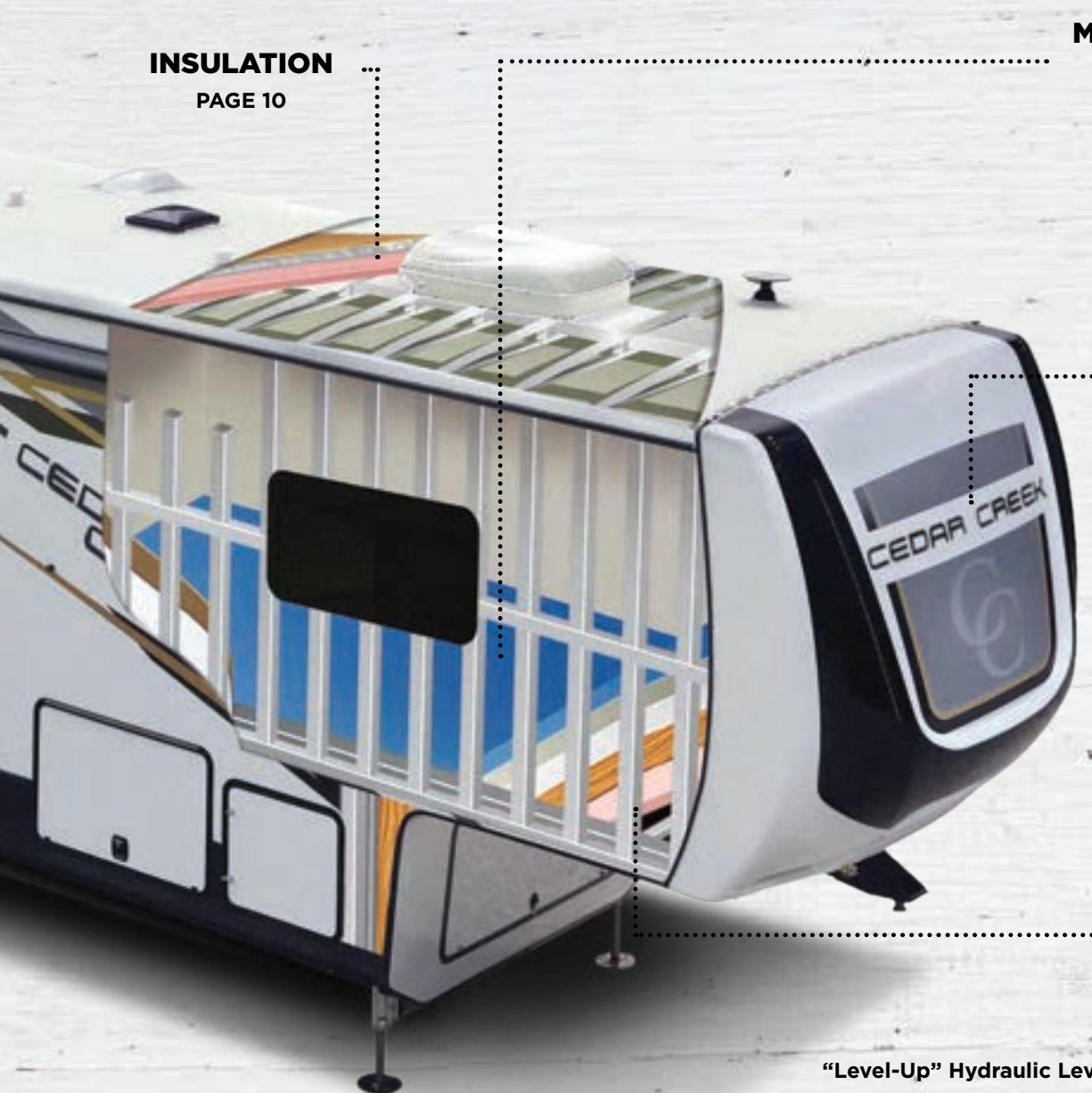
TST Tire pressure monitor System

**Z-FRAME**  
PAGE 7

**HEATED TANKS**  
PAGE 6



Cedar Creek is dedicated to enhancing the joy of the outdoors and your peace of mind, by building better quality recreational vehicles designed to withstand rugged road conditions and extreme temperatures. Experience Cedar Creek - see where the road leads and enjoy what life has to offer.



**INSULATION**  
PAGE 10

**MODERN INTERIOR DESIGN**  
PAGE 12

**WHO WE ARE**  
PAGE - BACK

**STRUCTURE**  
PAGE 9

“Level-Up” Hydraulic Leveling and stabilizers

**UNDERBELLY**  
PAGE 5

**TESTING AND INSPECTIONS**  
PAGE 14



# CEDAR CREEK'S SAFETY AND PERFORMANCE PACKAGE

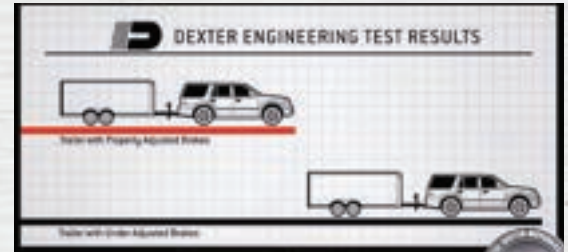
- **Dexter Nev-R-Adjust™ Brakes**

Extensively tested and proven to reduce stopping distances up to 50% versus improperly adjusted brakes.



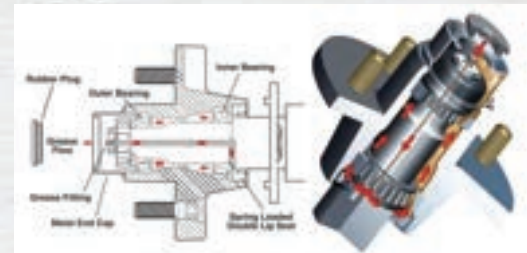
- **Heavy Duty, E-Z™ Lube, Dexter Axles**

(6000, 7000 & 8000 lb. axles) They make bearing lubrication quicker and easier, with no disassembly required!



- **Trailair® Road Armor Heavy Duty Rubber Equalization System**

Greased zerks and bronze bushings, are designed to reduce and absorb up to 80% of road stress while traveling. The upgraded suspension provides a safer ride for your trailer and cargo and eliminates fish tailing and porpoising while traveling down the road.



### Who's Dexter?

Dexter has been the leading manufacturer of trailer axles and brakes for over 60 years. Proven customer satisfaction, and a commitment to safety, and top quality products is what you get.



# 50%

**REDUCES STOPPING DISTANCES UP TO 50% VERSUS IMPROPERLY ADJUSTED BRAKES**

# 60 YEARS

**DEXTER HAS BEEN AROUND AND KNOWS RV'S**

# 80%

**DEXTER BUSHINGS ABSORB UP TO 80% MORE ROAD STRESS**



# HIGH-END UNDERBELLY DESIGN

IT TAKES GUTS TO DO THE RIGHT THINGS



- **ABS Underbelly Panels**

Each steel frame is covered with a unique ABS, impact-resistant, waterproof underbelly panel(s). Each 4' x 6' panel is inserted front to back, inside each frame crossmember. They're anchored into a braced wood backer within the frame for optimum security.



- **Advantages to Panel Design**

Our sectional design allows for easy access into the underbelly without destroying the integrity of the frame or creating areas for rust to start.



- **Insulated**

Competitors install a one piece underbelly design which is screwed into the frame. Cedar Creek's installation of the underbelly includes an R38, Radiant Shield, Thermo-foil layer, and is installed into the floor and underbelly.



- **Heated Tanks**

Black, grey, and fresh water tanks are installed with individual 12-volt, large surface heating pads on ALL tanks. These tank heaters allow for all season camping.

## R38

**RADIANT THERMOFOIL SHIELD**

## ALL

**ALL TANKS HEATED FOR ALL SEASON CAMPING**

## ABS

**IMPACT RESISTANT UNDERBELLY**



# FLOOR CONSTRUCTION

Cedar Creek's famous aluminum super-structure starts with 2"x 3" aluminum floor joists on 16" centers. Formaldehyde-free, glass wool insulation is then installed. The heat duct and water lines are protected within the frame away from exterior walls.



Our joists are then enclosed with 5/8", tongue and groove, plywood panels. (Weyerhaeuser fiberboard is commonly used by our competitors). Each floor is bonded to the aluminum substrate with a Silaprene adhesive. This adhesive is applied along every stud within the floor. The plywood is then installed and screwed down every six inches into the aluminum stud.



# TANK TESTING

COMES FROM YEARS OF EXPERIENCE

Standard Cedar Creek Enclosed Underbelly Temperature w/	Outside Temperature at the Rear of the Coach	Outside Temperature at the Front of the Coach	Galley	Fresh Water	Black	Grey	Average Temperature of all Tanks
Residential Insulation and Heating Pads on all Tanks	2.48	.05	49.1	35.78	37.94	35.6	39.65
Residential Insulation with just Blown Air into the Underbelly (Competitors Version of Heated and Enclosed))	2.48	.05	46.76	31.46	31.82	31.64	35.42
Residential Insulation with Additional Layer of Radiant Shield Insulation and 12 volt Tank Heaters	2.48	0.68	51.98	36.86	44.24	41.72	43.7

T-stat set at 70 Degrees - Average Temp During 10 hour period 0-10 Degree



# Z-FRAME DESIGN

BUILT SOLID SO YOU CAN ENJOY YOUR Z'S.



Cedar Creek's "Z" Frame design is the industry standard. This unique frame was created to give our customers over 100 cu. ft. of extra front storage space. This flat floor design assists in easy removal of your heavy camping equipment .

The purpose of the tripod is to build every unit like it's hooked to your vehicle as it is traveling down the road. Common practice in the industry is to put roller wheels on the front jack legs, but not at Cedar Creek. The flex of a frame is different when it is sitting on the truck. This practice ensures a level coach, each and every time, and creates a tighter fit and finished frame.

# 100%

**ALL ENTRY AND BAGGAGE DOORS ARE ALUMINUM FRAMED**

# 100<sub>CU. FT.</sub>

**OF FRONT STORAGE WHERE APPLICABLE**

# 32"

**EXTRA WIDE BAGGAGE DOOR WITH FRICTION HINGE**





# CABINETS

CRAFTED BY THE BEST IN THE BUSINESS



Kitchen cabinets can be one of the most striking features in a new fifth wheel. All of our cabinets are built from quality materials and are hand assembled by in-house skilled craftsmen and women. All lumber core stiles are predrilled and countersunk. This creates long lasting quality cabinetry that will stand the test of time.



# MORE CEDAR CREEK ADVANTAGES

## STRUCTURAL QUALITY AND INTEGRITY

Cedar Creek's famous, hand-made, ALL aluminum super structures are built on 16" centers or less, just like your residential home. Individually fastened, custom "L" brackets are combined with Silaprene adhesives that are designed to bend, flex and absorb road stress. Silaprene adhesives have a 475 PSI (pounds per square inch) and get stronger as it ages. It is resilient and has outstanding resistance to moisture, road chemicals, heat, and cold.

Cedar Creek's walls sit on top of the floor and are bolted to the outrigger. This allows for full aluminum framing around all windows and doors.

Laminated sidewalls are the most commonly produced sidewall in the industry. These walls start with a welded frame that generally runs every 24"-48" on center. Welded frames are not designed for strength, but for parameter structure. Polystyrene foam is placed inside the framework. The interior wall board and exterior materials are either pinch-rolled with an adhesive, or vacuum bonded into a one piece wall.



The trailer's strength does not come from the frame, but from the fact that the wall is one piece. Other manufacturers do not build their walls, they just assemble them.

Question: How do you repair a one piece wall if it has been damaged?

Answer: The Cedar Creek advantage is serviceability! High gloss, "True" Gelcoat exteriors are truly the best of the best in fiberglass exteriors. So don't be fooled by the newer, "Gelcoated" exteriors. Only "True" gelcoat is the thickest and retains its color as it ages. This gelcoat exterior remains our customers' first choice for lasting beauty. Silaprene is placed on every stud. The gelcoat is brought up to the frame and screwed around the parameter. Six foot clamps are then applied to the sidewall, compressing the exterior fiberglass into the adhesive while it cures.

A Cedar Creek unit gets its strength from the frame, not from lamination. It can be easily repaired, never worry about delamination, and enhance your resale value!



# INSULATION

YOU'LL GET A WARM FUZZY FEELING

Next, we glue residential, formaldehyde-free, glass wool insulation in-between the frame, expanding the insulation to full capacity. This thermal and acoustical insulation is made of long, resilient glass fibers bonded with a thermosetting resin. Bonded glass is dimensionally stable and allows better coverage through out the entire coach than our competitors. Also our paneling is formaldehyde-free, meaning Forest River beats all competitors with one of the strictest guidelines in formaldehyde emissions in the country.



**R11**   **R45**   **R45**

**SIDEWALLS**

**FLOORS**

**ROOF**

## ROOF=R45!

WE'VE GOT YOU COVERED



Our 5" all-aluminum roof rafters allow us to install two 15,000 standard air conditioners and ensure universal cooling with a dual zone control system.

Triple layered residential insulation is installed including a Radiant Thermo-Foil, with an R-value of 38, which is wrapped underneath the front cap.

Next a full-length 3/8" wood decking, for a full walk-on roof, is screwed (not stapled) into place. Our final step is adding a tear and puncture-resistant AlphaPly roofing membrane with Lifetime warranty.







## INSANE IN THE MEMBRANE? WE HAVE THE STATS TO PROVE IT >>>

# 45 MIL

THICKEST RV ROOF MEMBRANE EVER

# 40-80%

THICKER THAN ALL OTHER RV ROOF  
MEMBRANES IN THE MARKET

# 5x

HIGHER PEEL ADHESION RESULTS

# 100%

SOLID SEALANT (NO SOLVENTS)

# LIFETIME WARRANTY

- Alpha Systems' AlphaPly TPO membrane is 45 Mil, by far the thickest in the marketplace. Here are the other systems on the market: Dicor Diflex is 27 Mil, Dicor Tufflex PVC is 25 Mil, Lasalle PVC is 28mil, Alpha SuperFlex is 30 Mil.
- Peel adhesion is approximately five times higher than Alpha's current SuperFlex system. For example, other TPO systems (DiFlex) have about 1.5 pounds of pull before the membrane lets go of the wood deck (industry normal). AlphaPly has about 8 pounds of pull!
- The AlphaPly 5121 Sealant Package is 100% solids (no solvents).
  - No swelling of the membrane
  - No shrinking of sealant means less material used/savings
  - Very low maintenance required of sealant in the field after years of weathering
- An extremely pliable and workable membrane (install friendly).
- The entire roofing package (adhesive, membrane and sealant) is manufactured by Alpha Systems. We are not a distributor like our competitors who only put their name on a label and do not manufacture anything.
- AlphaPly comes with a lifetime warranty vs. the industry standard 12-year warranty.

## THICKER. STRONGER. BETTER!

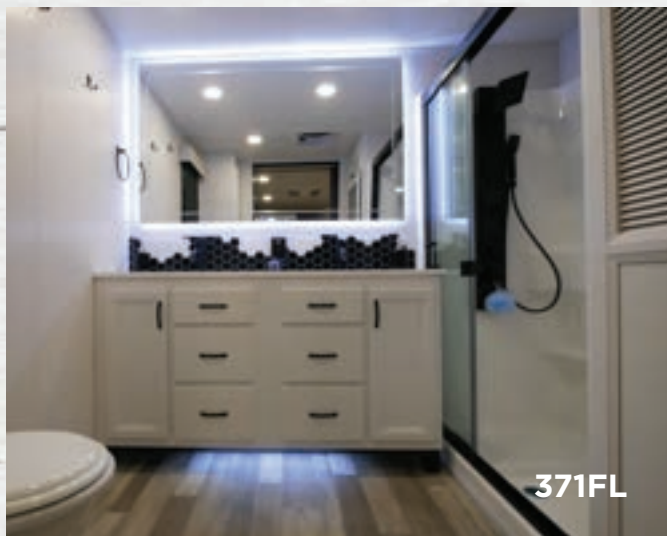
### ALPHAPLY HIGHLIGHTS

- Thickest RV Roof membrane ever
- Very high adhesion numbers
- Won't crack or shrink over time
- Highest UV resistance
- Mold and mildew resistant (PVC is not)
- Industry-best LIFETIME warranty
- Recyclable (PVC is not)
- Heat-Weldable



# MODERN INTERIOR DESIGN

BE COMFORTABLE IN STYLE





# FIREFLY CONTROL PANEL WITH WIRELESS CONNECTIVITY

**FIREFLY**  **INTEGRATIONS**      Imagination • Innovation • Integration

## 2023 Cedar Creek Unit Control Monitor

A Single Wired Touchscreen...



**FIREFLY SYSTEM**  
Manufacturers • WiFi-Ready • Return to products

**FIREFLY SYSTEM:**  
**Switches:**  
**Innovative Design, Precision Controls, Dependable Service**

Leading by innovation, engineering to each customer's specific application, not accepting other products to meet the customer's needs, Firefly listens to the customer's unique needs, designs applications with specific solutions, and provides service and support well after the sale.

Our switch panels introduce real time system monitoring through our line of large touch-capacitive color touch panels including Polarix, Link Spectrum, and Link. The touchscreen interface eliminates the need for installing wiring, adding members, dipswitches, and switches by having them all contained into one functional design and cost-effective touch panel.

**That can feed an Army of  
100% wireless surface mounted switches**



**ADD A MOBILE DEVICE  
TO CONTROL ALL FUNCTIONS,  
INCLUDING SLIDES, AWNINGS,  
AIR CONDITIONERS, AND JACKS**



# TESTING AND INSPECTION

FOREST RIVER'S 20,000 SQUARE FOOT INSPECTION FACILITY

To ensure that you are extremely pleased with the Cedar Creek you buy, we inspect every unit in a variety of ways.

100 lb. air pressure tests are done on all the gas and water lines midway in the manufacturing process. This ensures that all of the utility lines are installed properly as the unit is being assembled.

Hydraulics are the most powerful and reliable systems in fifth wheels. All slide-rooms and hydraulic jacks are tested right on the production line to ensure proper working order. This process eliminates air bubbles within the hydraulic lines.

Our inspectors conduct water pressure tests as the unit goes down the production line. This is done by filling all water lines up into the shower and sinks.

To ensure that you are extremely pleased with the your Cedar Creek, air is blown inside each unit during the final finish process, to ensure that windows and doors are sealed properly. This is achieved by spraying soapy water around all exterior openings to discover if air is leaking out.

Weekly, Cedar Creek units are put through Forest River's pre-delivery inspection facility. This 20,000 square foot



---

## MORE REASONS TO BUY: THE ADVENTURES!





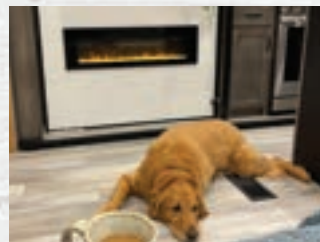


facility gives our customers the ultimate assurance of quality. Our state-of-the-art facility gives immediate, daily feedback to production for optimum quality assurance in every unit we build.

Now you can see why Cedar Creek is the smart choice for the experienced RV'er. We have taken every step to ensure that you not only have an RV that will last a very long time, but one that will provide you all of the comforts and conveniences of home that you expect on the road.

To watch our production video please visit our website at:

**[www.forestriverinc.com/cedarcreek](http://www.forestriverinc.com/cedarcreek)**





# ABOUT CEDAR CREEK

For over 24 years, Cedar Creek has been dedicated to enhancing the joy of the outdoors and your peace of mind, by building better quality recreational vehicles and wide body travel trailers which are designed to withstand rugged road conditions and extreme temperatures.

Designed for Living, Cedar Creek owners appreciate the feeling of safety, security and reliability each unit provides while enjoying the comfort of a residential home as they move forward to their next big adventure.

Cedar Creek's manufacturing facility is in Topeka, Indiana. This 150,000 square foot building was built specifically for the Cedar Creek's line of products and employs over 135 men and women. Production time from beginning to end is approximately 3 days.

Construction is the #1 concern in purchasing an RV. So with so many options available, Why make your next purchase a Cedar Creek? - Construction.

Only 2 manufacturers in the country build to the same standards as Cedar Creek.

This construction is not easy. It is built from the ground up by our dedicated production team without the use of purchased lamination sidewalls and is designed for the sole purpose of serviceability in mind.



## FOREST RIVER INC. CEDAR CREEK DIVISION

501 Hawpatch Road • Topeka, IN 46571

Phone: 260-593-4013 • Parts & Service Phone: 260-593-4000

On The Web at: [www.forestriverinc.com/cedarcreek](http://www.forestriverinc.com/cedarcreek)

Visit our website at: [forestriverinc.com/cedarcreek](http://forestriverinc.com/cedarcreek)



@cedarcreekbyforestriver