

CHEROKEE

GREY WOLF WOLF PUP TIMBERWOLF BLACK LABEL

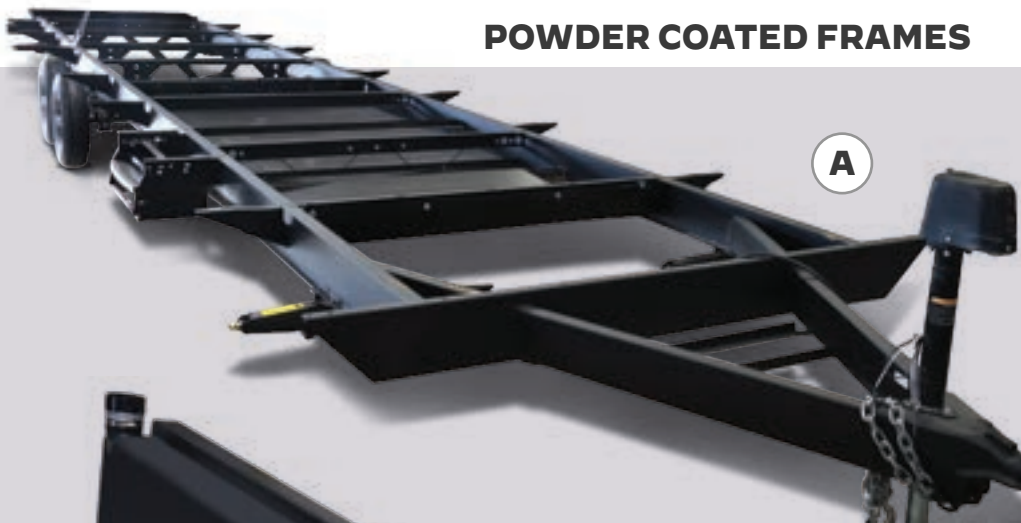
TRAINING MANUAL



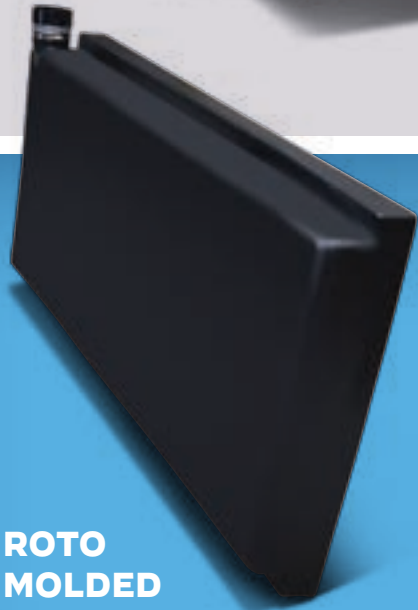
2023 MODEL YEAR

CONSTRUCTION FLOORING & FRAMES

POWDER COATED FRAMES



A. All frames are powder coated for a durable finish that reduces wear issues. Through floor bolts and steel outriggers are used to establish a strong foundation. A process called cambering is used to bend the frame up in the middle, so it will not deflect in the front or back. Engineered grommet holes are placed in cross members to guide electrical lines through the frame.



**ROTO
MOLDED
TANKS**

NO SEAMS!

All of our fresh water and waste tanks are roto molded. This means that each tank is put in a mold and spun to produce a seamless tank with equal thickness throughout.



**DARCO
UNDERBELLY**

B. The floor frame is constructed of 2" X 3"s and on 16" centers with insulation and water lines run in between. The floor is 5/8" tongue and groove plywood glued and screwed together. Darco underbelly is then wrapped from front to back, side to side and under the subfloor. This gives you full moisture protection on all sides of the trailer up to the sidewalls.



**HIGH-GRADE
LINOLEUM FLOORING**

C. High grade linoleum flooring is adhered to the topside of the plywood flooring and overlaps the Darco. This gives the plywood floor the most protection from moisture from all sides.

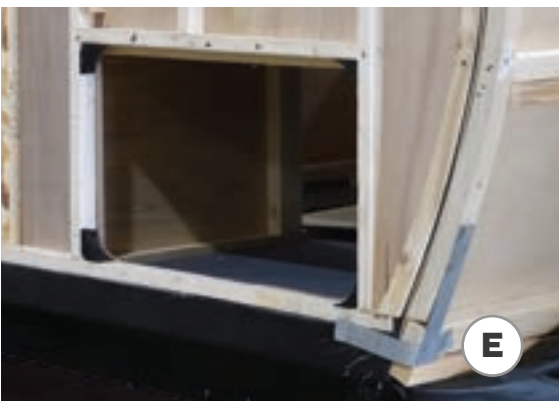
CONSTRUCTION SIDE WALLS



D. The wall studs are spaced, on average, every 12 inches which is far better than the 16" industry standard. The sidewall is screwed to the floor and metal straps are also used to increase the strength between the floor, sidewalls and the roof. Slide outs have additional straps used to add strength to the 13 ply micro laminated beam and the roof.

E. Metal straps are used to secure sidewalls and front walls to the floor. Molded radius pieces are used to complete openings for baggage doors and windows.

F. All our the water lines are color coded flex PEX with Flair-It fittings and widely considered to be the best in the industry. These water lines are rated up to 180* F and as low as -40* F, well within the comfort range of camping. By-pass kits are also standard with every Cherokee.



IS THIS OVERKILL? Cherokee believes that the best way to build a trailer is to construct it the way a customer would want it. We use high quality materials and methods in every aspect of our construction to bring our customers the best value in the market.

CONSTRUCTION ROOFING



**16" ON CENTER
BOWTRUSS RAFTERS**

Cherokee has 16" on center bowtruss rafters, with a 3/8" decking for a fully walkable roof. A fully ducted system provides air conditioning to the entire unit (NA on Wolf Pup)

The roof is Tufflex PVC and comes with an industry leading lifetime limited warranty. This material is flexible, reflective and puncture resistant. On the roof of most Cherokee's you will find solar panels. Ask your local dealer about the Cherokee "Juice Pack."



3/8" WALKABLE ROOF



CONSTRUCTION QUALITY ASSURANCE



WATER TEST SYSTEM

Cherokee uses a water test system in the production plant to ensure there are no leaks in the water system of the trailer.

LITHIUM READY

The converter in every Cherokee is Lithium ready so customers can upgrade their standard batteries to lithium if they choose.



FLOORPLANS

BUNK HOUSES



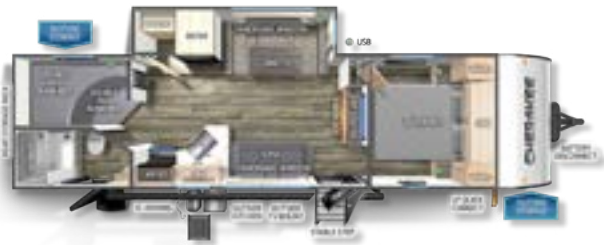
263GDK

HITCH WEIGHT: 845-lbs. | DRY WEIGHT: 6609-lbs. | LENGTH: 34'-1"



264DBH

HITCH WEIGHT: 884-lbs. | DRY WEIGHT: 6722-lbs. | LENGTH: 33'-2"



274BRB

HITCH WEIGHT: 720-lbs. | DRY WEIGHT: 6345-lbs. | LENGTH: 32'-7"



294GEBG

HITCH WEIGHT: 785-lbs. | DRY WEIGHT: 6940-lbs. | LENGTH: 36'-8"



294KM

HITCH WEIGHT: 945-lbs. | DRY WEIGHT: 8014-lbs. | LENGTH: 39'-2"



304BH

HITCH WEIGHT: 1015-lbs. | DRY WEIGHT: 8650-lbs. | LENGTH: 37'-3"



324TS

HITCH WEIGHT: 1165-lbs. | DRY WEIGHT: 8565-lbs. | LENGTH: 40'-5"



23DBH

HITCH WEIGHT: 621-lbs. | DRY WEIGHT: 5380-lbs. | LENGTH: 29'-5"

FLOORPLANS

BUNK HOUSES



26BRB

HITCH WEIGHT: 811-lbs. | DRY WEIGHT: 6730-lbs. | LENGTH: 32'-7"



26DBH

HITCH WEIGHT: 725-lbs. | DRY WEIGHT: 5757-lbs. | LENGTH: 31'-9"



27DBH

HITCH WEIGHT: 815-lbs. | DRY WEIGHT: 5825-lbs. | LENGTH: 33'-8"



29BRB

HITCH WEIGHT: 989-lbs. | DRY WEIGHT: 6707-lbs. | LENGTH: 37'-7"



29TE

HITCH WEIGHT: 837-lbs. | DRY WEIGHT: 6390-lbs. | LENGTH: 36'-8"



16BHS

HITCH WEIGHT: 460-lbs. | DRY WEIGHT: 3348-lbs. | LENGTH: 21'-9"



17JG

HITCH WEIGHT: 430-lbs. | DRY WEIGHT: 3860-lbs. | LENGTH: 23'-4"



25JB

HITCH WEIGHT: 645-lbs. | DRY WEIGHT: 5201-lbs. | LENGTH: 31'-2"



233MB

HITCH WEIGHT: 670-lbs. | DRY WEIGHT: 6010-lbs. | LENGTH: 29'0"



234DC

HITCH WEIGHT: 645-lbs | DRY WEIGHT: 5750-lbs | LENGTH: 28'-9"



243TR

HITCH WEIGHT: 784-lbs. | DRY WEIGHT: 6005-lbs. | LENGTH: 30'9"



274RK

HITCH WEIGHT: 860-lbs. | DRY WEIGHT: 6704-lbs. | LENGTH: 33'-9"



274WK

HITCH WEIGHT: 895-lbs. | DRY WEIGHT: 7105-lbs. | LENGTH: 33'-2"



304RK

HITCH WEIGHT: 1105-lbs. | DRY WEIGHT: 7960-lbs. | LENGTH: 38'-6"



306MM

HITCH WEIGHT: 900-lbs. | DRY WEIGHT: 8540-lbs. | LENGTH: 40'-1"



19SM

HITCH WEIGHT: 526-lbs. | DRY WEIGHT: 4826-lbs. | LENGTH: 24'-5"



22CE

HITCH WEIGHT: 615-lbs | DRY WEIGHT: 4953-lbs. | LENGTH: 26'-2"



23MK

HITCH WEIGHT: 608-lbs. | DRY WEIGHT: 5063-lbs. | LENGTH: 29'-0"



24JS

HITCH WEIGHT: 470-lbs. | DRY WEIGHT: 4443-lbs. | LENGTH: 27'-3"



29QB

HITCH WEIGHT: 977-lbs | DRY WEIGHT: 6580-lbs. | LENGTH: 36'-8"

FLOORPLANS

REAR RAMP



18RR

HITCH WEIGHT: **550-lbs** | DRY WEIGHT: **4425-lbs** | LENGTH: **24'-1"**
CARGO CARRYING CAPACITY: **3087-lbs**



18RJB

HITCH WEIGHT: **426-lbs** | DRY WEIGHT: **3416-lbs** | LENGTH: **22'-9"**
CARGO CARRYING CAPACITY: **1564-lbs**



22RR

HITCH WEIGHT: **686-lbs.** | DRY WEIGHT: **4833-lbs.** | LENGTH: **29'-0"**
CARGO CARRYING CAPACITY: **2815-lbs.**



25RRT

HITCH WEIGHT: **690-lbs.** | DRY WEIGHT: **5065-lbs.** | LENGTH: **30'-10"**
CARGO CARRYING CAPACITY: **2587-lbs.**



26MBRR

HITCH WEIGHT: **785-lbs.** | DRY WEIGHT: **5355-lbs.** | LENGTH: **33'-6"**
CARGO CARRYING CAPACITY: **2392-lbs.**



27RR

HITCH WEIGHT: **1159-lbs.** | DRY WEIGHT: **6533-lbs.** | LENGTH: **34'-2"**
CARGO CARRYING CAPACITY: **1588-lbs.**



29RRT

HITCH WEIGHT: **1255-lbs.** | DRY WEIGHT: **7255-lbs.** | LENGTH: **38'-3"**
CARGO CARRYING CAPACITY: **2692-lbs.**



235MBBL

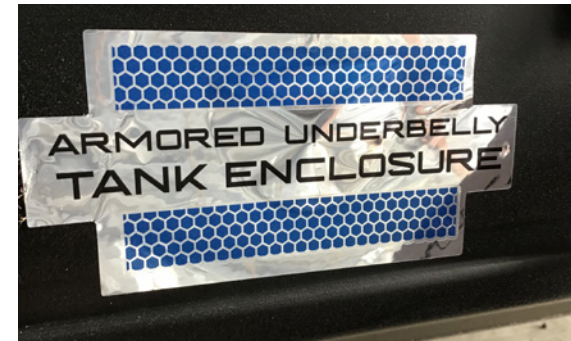
HITCH WEIGHT: **1265-lbs** | DRY WEIGHT: **7375-lbs** | LENGTH: **29'-6"**

FLOORPLANS

FIFTH WHEEL



Black Waste Tank Flush out Kit



Armored Underbelly Tank Enclosure



Flip Down Travel Rack *(not available on Toyhauler Models)*



Large Exterior Folding Assist Grab Handle



Outside Shower with Hot and Cold Water



Power Awning



Outside TV Bracket and Hook Ups



LP Quick Connect

PACKAGES

CAMPFIRE



40" Dinette Drawers x 2 on models with slideouts



On-Demand Tankless Water Heater



Cabinets in Bedroom



Bluetooth Radio



High Output Power Vent Fan in Bathroom



Oven with Light



Roof Mounted Ducted Air Conditioner
(not available on units under 26')



Sink Cover



Skylight over Shower



Solid Bedroom Doors *(not available on all models)*

PACKAGES

LIMITED PACKAGE



11 Cubic Foot 12V high Efficiency Refrigerator



Chef Select Black Stainless Steel Kitchen Suite Package



Cherokee Back up Camera System



Cherokee Exclusive Stable Step with Oversized Landing, 600LB. Capacity, Quick Release and Kick Plate



External LED Strip Lighting



External Porch Scare Light



Fireplace *(not available on all models)*



Ladder Prep



Interior and Exterior Ghost Lights



Full Hybrid Tub with Shower Surround



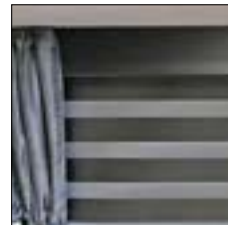
Kitchen Skylight W/ Shade *(N/A on FW)*



Cherokee Total Control App & Remote Control System



LED Strip Lighting *(not available on all models)*



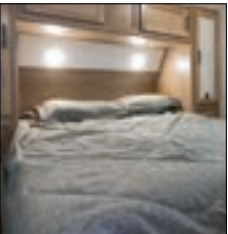
Light Filtering Sheer Shading Premium Blackout Zebra Blinds



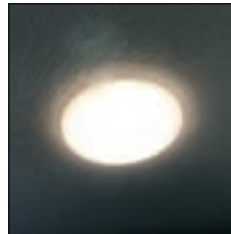
Matte Black Heavy Duty Spring Assisted Kitchen Faucet Sprayer



Power Gear™ Frame Technology and Space Saver Rail Design



Premium Bedding Ensemble and Comforter



LED Interior Lights



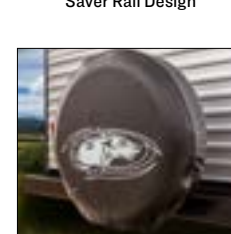
Premium Wheel Package



Ramp Door Patio System *(available on Toyhauler Models Only)*



Residential Farm Style Black Stainless Steel Sink



Spare Tire



Removable Gauch Brackets *(RR Models Only)*



Supersized, Central Air Conditioning Unit (15,000 BTU) with Quick Cool Air Dump Feature



Tire Pressure Monitors



Upgraded Sofa with Bolster Arm Rests



USB Charging Stations *(Beds, Bunks, Tables where applicable)*



Seamless Roofing Membrane with Heat Reflectivity



Real Blackout Glass, Safety Slam, Friction Hinge Entry Door with Window and Shade Prep



Exclusive Solar Thermo Controlled Reflective Tinted Safety Glass Windows



20RDSE

HITCH WEIGHT: 450-lbs. | DRY WEIGHT: 4053-lbs. | LENGTH: 25'-4"



22MKSE

HITCH WEIGHT: 585-lbs. | DRY WEIGHT: 4341-lbs. | LENGTH: 26'-9"



26DJSE

HITCH WEIGHT: 574-lbs | DRY WEIGHT: 4596-lbs | LENGTH: 29'-6"



PACKAGES

SPECIAL EDITION LIMITED



11 Cubic Foot 12V high Efficiency Refrigerator



Chef Select Black Stainless Steel Kitchen Suite Package



Cherokee Back up Camera System



Cherokee Exclusive Stable Step with Oversized Landing, 600LB. Capacity, Quick Release and Kick Plate



External LED Strip Lighting



External Porch Scare Light



Fireplace *(not available on all models)*



Ladder Prep



Interior and Exterior Ghost Lights



Full Hybrid Tub with Shower Surround



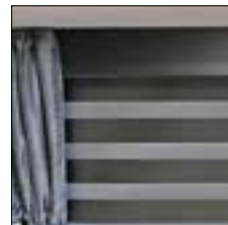
Cherokee Total Control App & Remote Control System



Kitchen Skylight W/ Shade *(N/A on FW)*



LED Strip Lighting *(not available on all models)*



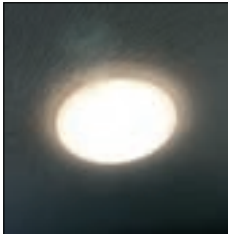
Light Filtering Sheer Shading Premium Blackout Zebra Blinds



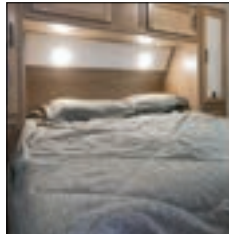
Matte Black Heavy Duty Spring Assisted Kitchen Faucet Sprayer



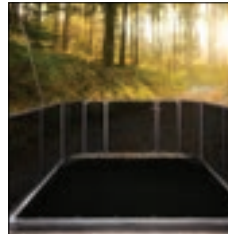
Power Gear™ Frame Technology and Space Saver Rail Design



LED Interior Lights



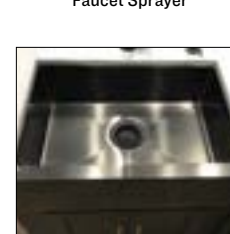
Premium Bedding Ensemble and Comforter



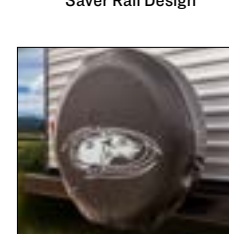
Ramp Door Patio System *(available on Toyhauler Models Only)*



Premium Wheel Package



Residential Farm Style Black Stainless Steel Sink



Spare Tire



Removable Gauch Brackets *(RR Models Only)*



Supersized, Central Air Conditioning Unit (15,000 BTU) with Quick Cool Air Dump Feature



Tire Pressure Monitors



Upgraded Sofa with Bolster Arm Rests



USB Charging Stations *(Beds, Bunks, Tables where applicable)*



Seamless Roofing Membrane with Heat Reflectivity



Real Blackout Glass, Safety Slam, Friction Hinge Entry Door with Window and Shade Prep



Exclusive Solar Thermo Controlled Reflective Tinted Safety Glass Windows



39CA

HITCH WEIGHT: 1230-lbs. | DRY WEIGHT: 10485-lbs. | LENGTH: 42'-4"



39DL

HITCH WEIGHT: 1095-lbs. | DRY WEIGHT: 10740-lbs. | LENGTH: 42'-8"



39LB

HITCH WEIGHT: 1335-lbs. | DRY WEIGHT: 10650-lbs. | LENGTH: 42'-11"



39SR

HITCH WEIGHT: 1650-lbs. | DRY WEIGHT: 11323-lbs. | LENGTH: 42'-11"



Upgraded Kitchen Appliance Package



Extra Large Shower with Full Surround



Fireplace



Cherokee Total Control App & Remote Control System



Detachable Power Cord



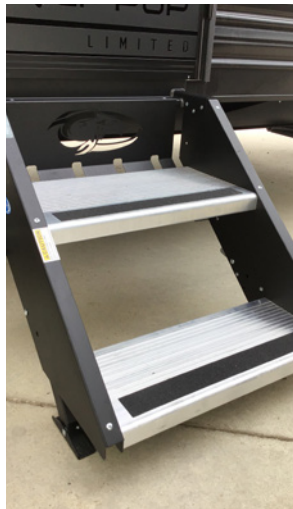
LED Strip Lighting



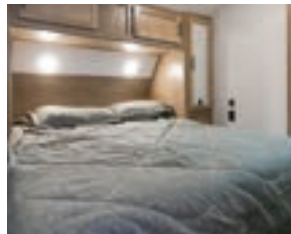
Light Filtering Sheer Shading Premium Blackout Zebra Blinds



External LED Strip Lighting



Cherokee Exclusive Stable Step with Oversized Landing, 600LB. Capacity, Quick Release and Kick Plate



Premium Bedding Ensemble and Comforter



LED Interior Lights



Tire Pressure Monitors



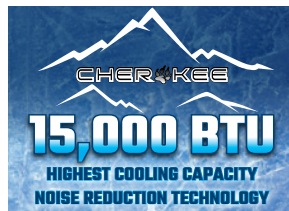
Power Gear™ Frame Technology



Power Awning



External Porch Scare Light



Supersized, Central Air Conditioning Unit (15,000 BTU) with Quick Cool Air Dump Feature



Residential Undermount Kitchen Sink



Seamless Roofing Membrane with Heat Reflectivity



USB charging stations (Beds, Bunks, Table where Applicable)



Large Exterior Folding Assist Grab Handle



On-Demand Tankless Water Heater



High Output Attic Fan in Bathroom



Night Shades



Outside Shower With Hot And Cold Water



RV Grill Quick Connect



Sky Light Over Tub

FLOORPLANS TRAVEL TRAILERS



HITCH WEIGHT: 400-lbs | DRY WEIGHT: 2865-lbs. | LENGTH: 19'-3"



HITCH WEIGHT: 470-lbs. | DRY WEIGHT: 3764-lbs. | LENGTH: 22'-7"



HITCH WEIGHT: 428-lbs. | DRY WEIGHT: 2900-lbs. | LENGTH: 21'-10"



HITCH WEIGHT: 475-lbs. | DRY WEIGHT: 3765-lbs. | LENGTH: 22'-6"



HITCH WEIGHT: 470-lbs. | DRY WEIGHT: 3185-lbs. | LENGTH: 21'-9"



HITCH WEIGHT: 437-lbs. | DRY WEIGHT: 3778-lbs. | LENGTH: 23'-2"

PACKAGES

ADVANTAGE PACKAGE



14" Tires for improved towing in place of 13"



Aerodynamic Smooth Radius Front Profile



Safe Ride Roadside Assistance



26" Wide Door IPO 22" Door



Outside Storage Door



High Impact Front metal IPO corrugated metal



Monitor Panel for Tanks and Battery Levels



Large Exterior Folding Assist Handle



Exterior 110V Recept



TV Antenna with Hookups

PACKAGES

LIMITED PACKAGE



11 Cubic Foot 12V high Efficiency Refrigerator



Exclusive Solar Thermo Controlled Reflective Tinted Safety Glass Windows



13,500 BTU Air Conditioner



20,000 BTU Furnace



On-Demand Tankless Water Heater



Power Awning



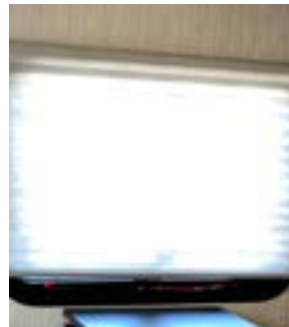
Interior and Exterior Ghost Lights



Ladder Prep



LED Interior Lights



Night Shades



Upgraded Range Hood with Light and Fan



Bluetooth Radio



Four Stabilizer Jacks



Cherokee Total Control App & Remote Control System



Detachable Power Cord



14" Premium Wheel Package



Exterior LED Light Strip at Awning



External Porch Scare Light

PACKAGES

LIMITED PACKAGE



Real Blackout Glass, Safety Slam, Friction Hinge Entry Door with Window and Shade Prep



Cherokee Back up Camera System



Cherokee Exclusive Stable Step with Oversized Landing, 600LB. Capacity, Quick Release and Kick Plate



Stereo with Inside and Outside Speakers



Tire Pressure Monitors



Outside Shower with Hot and Cold Water



Seamless Countertop



Seamless Roofing Membrane with Heat Reflectivity



Shower Tub Surround



Spare Tire



Wolf Pup Quick Jack



Tongue and Groove Plywood Flooring



Upgraded Evergreen Mattress



Flushmount Range with Cover



USB charging stations
(Beds, Bunks, Table where Applicable)



Power Gear™ Frame Technology and Space Saver Rail Design

CAMPING PACKAGE



55 Amp Converter



High Output Cooktop



Bathroom Fan



Full Length Awning



One Piece, Walkable Decked Roof



High Rise Faucet



Foot Flush Toilet



Large High Output Microwave



High Flo Water Pump



Oversized Dinette with Removable Table

SAFETY PACKAGE



Carbon Monoxide Detector



Emergency Exit Windows



Fire Extinguisher



GFI Protective Outlet



LP Gas Detector



Safety Glass Windows



Smoke Detector

PACKAGES

BLACK LABEL



Gel Coated Fiberglass – Power Tongue Jack – Aluminum Rims LED Exterior Clearance and Taillights



Automotive Frameless Windows Package



Hands Free Baggage Door Catch



LG Solid Surface Countertop



Deep Stainless Steel Sink



Residential Pullout Faucet



Pillowtop Mattress



Thermo-Foil Arctic Insulation



Solid Wood Cabinet Doors



Designer Fabric



Battery Minder



Reading Lights



Upgraded Shower Head



Upgraded Bedspread



Power Tongue Jack



Battery Disconnect



THE BEST SELLING UNIT IS ALSO ONE OF THE INDUSTRY'S
MOST TRUSTED BRANDS

There is a reason Cherokee retails more units than anyone else: **PEOPLE TRUST CHEROKEE.**
 Thank you for taking the time to view your new coach. **YOU HAVE FOUND VALUE.**

HERE ARE SOME REASONS WHY FOREST RIVER'S CHEROKEE PRODUCT IS RIGHT FOR YOU:

- ✓ **VALUE:** Cherokee's product focuses on value. This focus is specifically for our dealers and customers. We give customers more of what they want for less money. This is how we have made more customers happy.
- ✓ **REPUTATION:** Cherokee has built a great reputation for quality workmanship thanks to our unique workforce in Northeastern Indiana and Oregon.
- ✓ **QUALITY:** Most people know that quality cannot be inspected into a unit after it goes offline. Quality must be built in. Cherokee builds quality into each of its units with over seven check stations throughout our plants. Each station is manned with

quality leaders. At each station, checklists are completed to insure that no detail is left unattended. We also have a state of the art 20,000 square foot pre-delivery inspection facility, gives immediate daily feedback to assure quality.

- ✓ **BEST PEOPLE:** Cherokee is an incubator where innovative ideas thrive and flourish as we strive to adapt to changing market and consumer demands. At Cherokee, we are innovators, entrepreneurs, creators, designers and visionaries working together. Our commitment goes beyond the manufacturing process as we invest in creating exceptional life moments of laughter and joy for our customers. Cherokee's defining edge is our people.

- ✓ **OWNERSHIP:** Part of the RV experience is connecting with other RVers who hold the same passion as you. In 2011 the Forest River Owners' Group (FROG) was formed, and it quickly has grown to over 55,000 members. These members attend rallies and tours throughout North America, sharing memories and stories that will last a lifetime. Membership is FREE, and all it takes to become a member is to become a Cherokee RV owner and submit a form on the FROG website www.forestriverfrog.com.

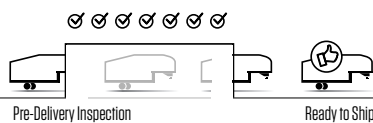
Thank you for viewing your all new Cherokee product, and we look forward to making your family and friends happy for many years to come.



HIGH QUALITY ASSEMBLY INSPECTION STATIONS



PRE-DELIVERY INSPECTION



RETAIL DELIVERY



PRE-DELIVERY INSPECTION FACILITY

20,000 square feet of quality assurance. The bare essentials for a premium product. This state-of-the-art facility gives immediate daily feedback to production for quality assurance in every unit built.



www.ForestRiverBuyLocal.com



Learn More
 Scan this barcode using a QR Reader on your smart phone to learn more about Forest River.



Cherokee Division
 404 Lehman Ave. Topeka, IN 46571
 260-593-2539

www.forestriverinc.com/cherokee



FOREST RIVER OWNER "DIGITAL KIT" APP

Now you can have your Owner's Manual with you wherever you are. Download our FREE App from the App Store or Google Play and you'll have the information right at your fingertips.

