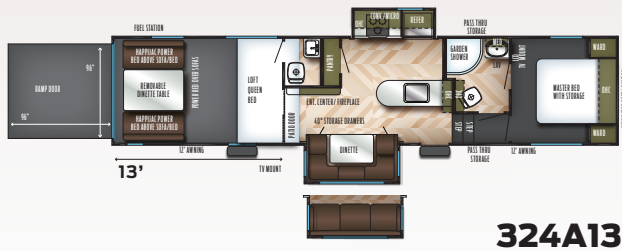
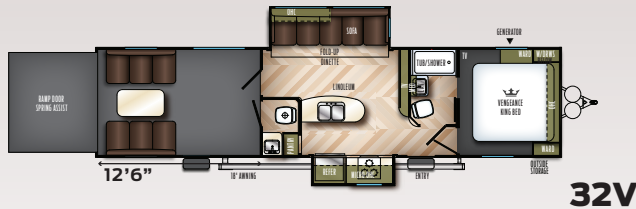
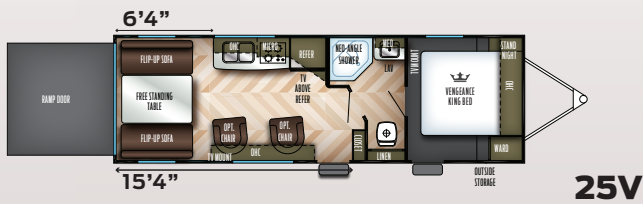


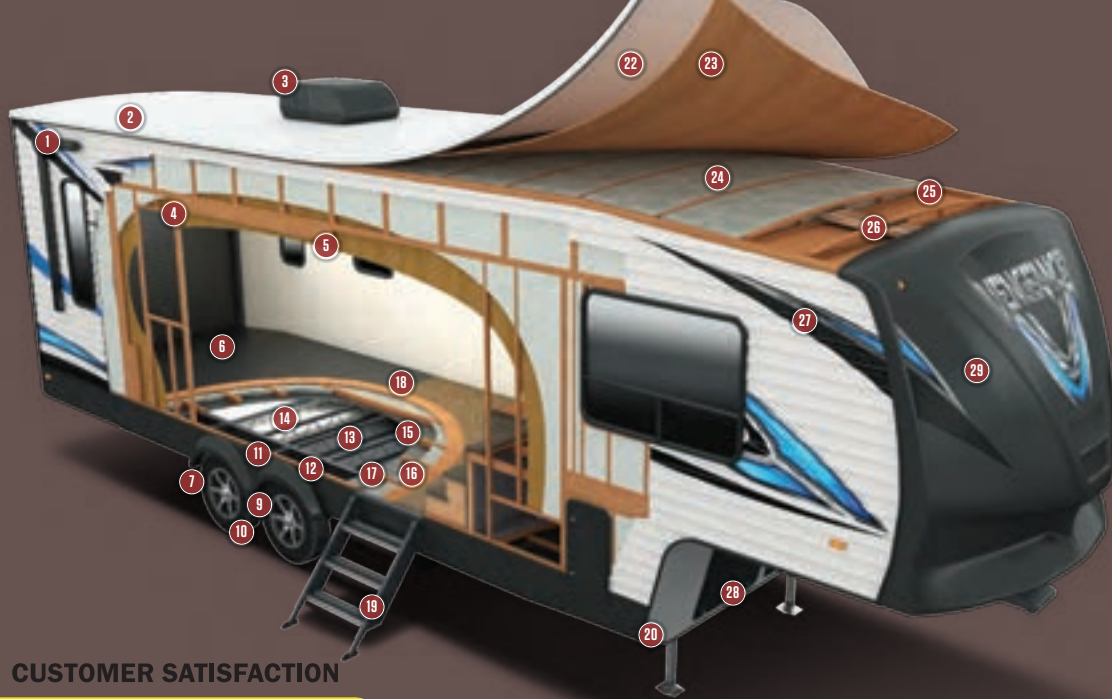
# VENGEANCE

## ROGUE

### TRAVEL TRAILERS & FIFTH WHEELS



	<b>25V</b>	<b>28V</b>	<b>31V</b>	<b>32V</b>	<b>295A18</b>	<b>311A13</b>	<b>324A13</b>
Dry Hitch Weight	1014-lbs.	926-lbs.	1250-lbs.	1598-lbs.	2084-lbs.	2317-lbs.	2356-lbs.
Unloaded Vehicle Weight	6498-lbs.	6604-lbs.	8484-lbs.	9946-lbs.	8997-lbs.	10258-lbs.	11900-lbs.
Axle Weight	5446-lbs.	5640-lbs.	7196-lbs.	8310-lbs.	6875-lbs.	7903-lbs.	9506-lbs.
GVWR w/Brakes	9985-lbs.	9985-lbs.	11450-lbs.	13598-lbs.	12996-lbs.	14257-lbs.	16356-lbs.
Cargo Carrying Capacity	3487-lbs.	3381-lbs.	2966-lbs.	3652-lbs.	3999-lbs.	3999-lbs.	4456-lbs.
Exterior Length	30' 6"	32' 7"	37'-1"	39'-3"	33'-4"	38'-4"	39'-9"
Exterior Height w/ AC	12'-1"	12'-1"	12' 4"	12' 4"	13'-4"	13'-4"	13'-4"
Exterior Width	102"	102"	102"	102"	102"	102"	102"
Grey Capacity	38-gal	38-gal	38-gal	38-gal	38-Gal.	38-Gal.	38-Gal.
Black Capacity	38-gal	38-gal	38-gal	76-gal	38-Gal.	38-Gal.	76-Gal.
Fresh Capacity	100-Gal.	100-Gal.	100-Gal.	100-Gal.	100-Gal.	100-Gal.	100-Gal.
Awning Size	21'	21'	21'	21'	21'	21'	21'
Cargo Area Size-Off DS	76"	75"	120"	150"	128"	158"	156"
Cargo Area Size-DS	184"	162"	120"	150"	225"	158"	156"



# VENGEANCE ROGUE CONSTRUCTION

QUALITY BUILT EVERY TIME.

- |  |   |
|--|---|
| 1 Power awning w/ LED strip lighting             | 18 Tongue in groove plywood floor                         |
| 2 Full walk-on roof                              | 19 MORryde Step Above                                     |
| 3 13,500 BTU A/C                                 | 20 Electric front landing gear (FW Only)                  |
| 4 2x2 Wood wall studs averaging 12" on center    | 21 Stabilizer jacks (TT Only)                             |
| 5 5x2 Slide out headers (slide out models only)  | 22 One piece PVC roof material                            |
| 6 Tuff ply cargo flooring in garage              | 23 3/8" Roof decking                                      |
| 7 6,000 lb. Axles (FW Only)                      | 24 Baton insulation layer                                 |
| 8 5,200 lb Axles (TT Only)                       | 25 5" Bowed wood truss rafters                            |
| 9 Aluminum Rims                                  | 26 PVC Foam A/C Ducting                                   |
| 10 Radial Tires                                  | 27 Aluminum Siding Std.<br>(Gel Coat Fiberglass Optional) |
| 11 Fender Skirts                                 | 28 102" Wide body   |
| 12 Steel I-Beam chassis                          | 29 Painted Fiberglass Front Cap (FW Only)                 |
| 13 Fluted polypropylene enclosed underbelly      | 30 Smooth metal radius front (TT Only)                    |
| 14 Baton insulation layer in underbelly          | 31 Diamond plate rock guard (TT Only)                     |
| 15 Polyethylene subfloor wrap                    | 32 LP Bottle Cover (TT Only)                              |
| 16 Baton insulation layer in floor               |   |
| 17 2x3 Wood floor joists averaging 12" on center |   |

## CUSTOMER SATISFACTION



[www.ForestRiverBuyLocal.com](http://www.ForestRiverBuyLocal.com)

## SUPERIOR FEATURES TOP TEN REASONS TO BUY

- 102" Wide Body Construction
- MORryde "Step Above" Steps
- Full Walk-on Roof
- Equa-flex Suspension
- PVC Foam A/C Ducts
- 8 CU Gas/Electric Refrigerator
- Seamless Countertops
- LED interior lights and USB charging ports
- Jensen Stereo Package w/ DVD
- Residential Amenities Throughout

**GVWR (Gross Vehicle Weight Rating)** - is the maximum permissible weight of the unit when fully loaded. It includes all weights, inclusive of all fluids, cargo, optional equipment and accessories. For safety and product performance do NOT exceed the GVWR.

**GAWR (Gross Axle Weight Rating)** - is the maximum permissible weight, including cargo, fluids, optional equipment and accessories that can be safely supported by a combination of all axles.

**UVW (Unloaded Vehicle Weight)\*** - is the typical weight of the unit as manufactured at the factory. It includes all weight at the unit's axle(s) and tongue or pin and LP Gas. The UVW does not include cargo, fresh potable water, additional optional equipment or dealer installed accessories.

\*Estimated average based on standard build optional equipment.

**CCC (Cargo Carrying Capacity)\*\*** - is the amount of weight available for fresh potable water, cargo, additional optional equipment and accessories. CCC is equal to GVWR minus UVW. Available CCC should accommodate fresh potable water (8.3 lbs per gallon). Before filling the fresh water tank, empty the black and gray tanks to provide for more cargo capacity.

\*\* Estimated average based on standard build optional equipment

Each Forest River RV is weighed at the manufacturing facility prior to shipping. A label identifying the unloaded vehicle weight of the actual unit and the cargo carrying capacity is applied to every Forest River RV prior to leaving our facilities.

The load capacity of your unit is designated by weight, not by volume, so you cannot necessarily use all available space when loading your unit.

All information contained in this brochure is believed to be accurate at the time of publication. However, during the model year, it may be necessary to make revisions and Forest River, Inc., reserves the right to make all such changes without notice, including prices, colors, materials, equipment and specifications as well as the addition of new models and the discontinuance of models shown in this brochure. Therefore, please consult with your Forest River, Inc., dealer and confirm the existence of any materials, design or specifications that are material to your purchase decision.  
Litho. U.S.A. FOR 1490 P / W: 2017.12



**Learn More**  
Scan this barcode using a QR Reader on your smart phone to learn more about Forest River.



A Berkshire Hathaway company.

YOUR VENGEANCE ROGUE DEALER