

FOREST RIVER  
**SALEM**



# FOREST RIVER SALEM



**22ERAS**

UVW	HITCH	CCC	LENGTH	HEIGHT	CAPACITY (GAL)
6,196	685	1,489	28' 2"	TBD	40 60 30



**22RBS**

UVW	HITCH	CCC	LENGTH	HEIGHT	CAPACITY (GAL)
5,647	771	2,124	27' 0"	11' 2"	61 64 32



**25RD**

UVW	HITCH	CCC	LENGTH	HEIGHT	CAPACITY (GAL)
6,704	912	3,295	31' 2"	11' 0"	50 65 40



**25RKE**

UVW	HITCH	CCC	LENGTH	HEIGHT	CAPACITY (GAL)
5,978	780	1,802	29' 7"	10' 9"	61 64 32



**26DBUD**

UVW	HITCH	CCC	LENGTH	HEIGHT	CAPACITY (GAL)
6,988	824	2,636	33' 9"	11' 2"	61 75 32



**29VIEW**

UVW	HITCH	CCC	LENGTH	HEIGHT	CAPACITY (GAL)
8,001	1,010	1,809	34' 10"	11' 4"	40 60 30

# SALEM CRUISE LITE



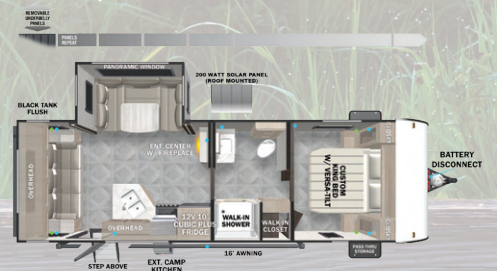
**210RBXL**

UVW	HITCH	CCC	LENGTH	HEIGHT	CAPACITY (GAL)
4,830	500	2,670	25' 2"	10' 8"	61 42 32



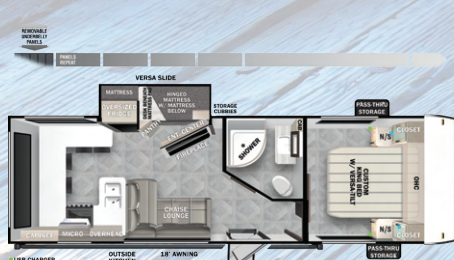
**220BHXL**

UVW	HITCH	CCC	LENGTH	HEIGHT	CAPACITY (GAL)
4,691	563	2,872	27' 6"	10' 6"	40 64 28



**24RLXL**

UVW	HITCH	CCC	LENGTH	HEIGHT	CAPACITY (GAL)
5,063	550	2,487	28' 11"	10' 5"	40 30 40



**24VIEW**

UVW	HITCH	CCC	LENGTH	HEIGHT	CAPACITY (GAL)
6,205	781	2,37	29' 11"	10' 8"	61 64 32



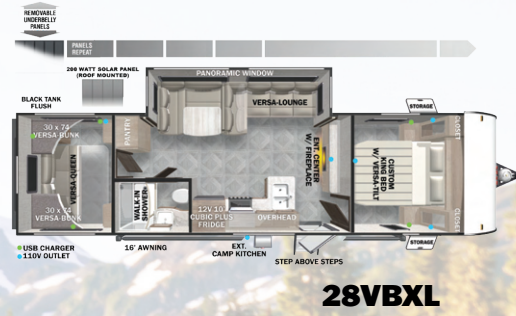
**241BHXL**

UVW	HITCH	CCC	LENGTH	HEIGHT	CAPACITY (GAL)
5,520	2,090	610	28' 11"	10' 8"	39 74 32



**263BHXL**

UVW	HITCH	CCC	LENGTH	HEIGHT	CAPACITY (GAL)
6,440	768	1,328	32' 1"	10' 8"	61 74 32

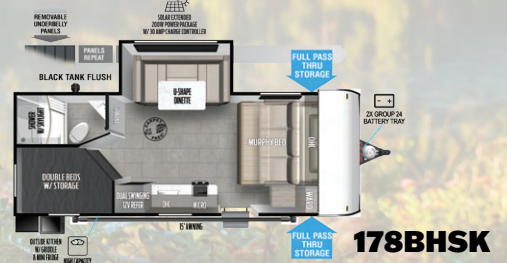


UVW	HITCH	CCC	LENGTH	HEIGHT	CAPACITY (GAL)		
6,550	752	2,002	33' 8"	10' 8"	61	32	42

UVW	HITCH	CCC	LENGTH	HEIGHT	CAPACITY (GAL)		
6,438	710	2,072	33' 10"	10' 8"	61	32	42



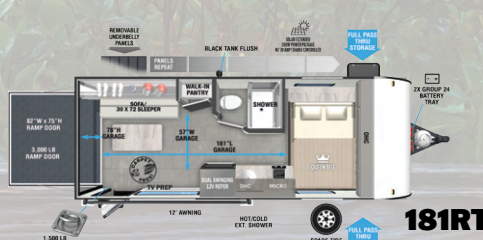
### SINGLE AXLE FLOORPLANS



UVW	HITCH	CCC	LENGTH	HEIGHT	CAPACITY (GAL)		
3,605	559	1,354	23' 6"	10' 2"	39	27	32

UVW	HITCH	CCC	LENGTH	HEIGHT	CAPACITY (GAL)		
2,961	340	879	20' 2"	9' 4"	39	27	27

UVW	HITCH	CCC	LENGTH	HEIGHT	CAPACITY (GAL)		
4,116	530	814	22' 11"	10' 8"	39	27	27

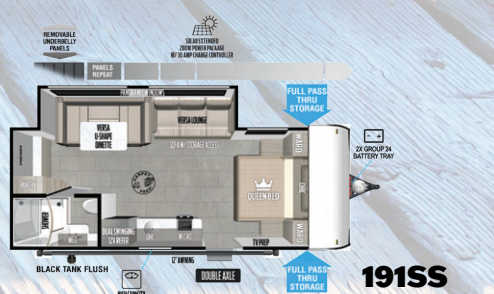
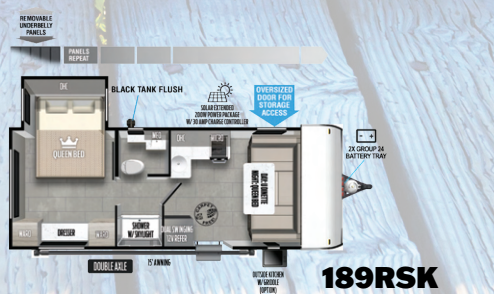


UVW	HITCH	CCC	LENGTH	HEIGHT	CAPACITY (GAL)		
3,530	490	1,360	22' 5"	10' 2"	39	27	27

UVW	HITCH	CCC	LENGTH	HEIGHT	CAPACITY (GAL)		
3,578	530	1,352	21' 8"	10' 2"	39	30	28

UVW	HITCH	CCC	LENGTH	HEIGHT	CAPACITY (GAL)		
3,481	387	1,306	22' 10"	10' 2"	39	27	27

### DOUBLE AXLE FLOORPLANS

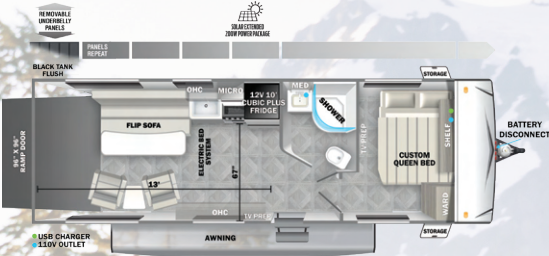


UVW	HITCH	CCC	LENGTH	HEIGHT	CAPACITY (GAL)		
4,325	516	3,191	24' 9"	10' 8"	39	27	32

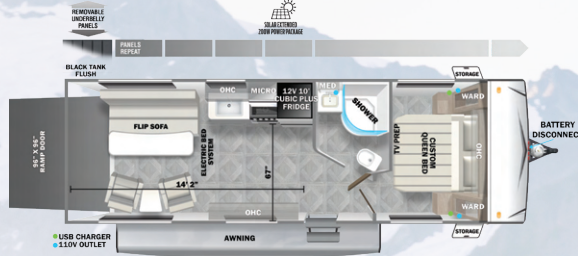
UVW	HITCH	CCC	LENGTH	HEIGHT	CAPACITY (GAL)		
4,513	490	2,977	24' 9"	10' 8"	39	27	27



# TOY HAULERS



**211SSXL**



**251SSXL**

UVW	HITCH	CCC	LENGTH	HEIGHT	CAPACITY (GAL)		
5,490	678	2,988	27' 10"	11' 8"	61	32	32

UVW	HITCH	CCC	LENGTH	HEIGHT	CAPACITY (GAL)		
5,714	726	2,812	30' 1"	11' 8"	61	32	32



**251SSXL**



**251SSXL**



**PRE-DELIVERY INSPECTION FACILITY**

20,000 square feet of quality assurance. The bare essentials for a premium product. This state-of-the-art facility gives immediate daily feedback to production for quality assurance in every unit built.

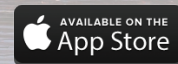
**CUSTOMER SATISFACTION**



[www.ForestRiverBuyLocal.com](http://www.ForestRiverBuyLocal.com)

Download our Forest River mobile app or visit our dynamic online manual to enhance your ownership experience. These interactive options provide incredible ease and insight into use, maintenance and enjoyment of your Forest River product.

Ranging from "How-To" videos, pictures and illustrations of various components, systems and features, to fully searchable content and downloadable PDFs for individual component owner's manuals, answers are always just a click away. View the online manual at [www.forestriverinc.com/OnlineManual](http://www.forestriverinc.com/OnlineManual) or download our FREE app from the App Store or Google Play!



**FREE MEMBERSHIP**  
to Forest River Owners' Group

[www.forestriverfrog.com](http://www.forestriverfrog.com)



**GVWR (Gross Vehicle Weight Rating)** - is the maximum permissible weight of the unit when fully loaded. It includes all weights, inclusive of all fluids, cargo, optional equipment and accessories. For safety and product performance do NOT exceed the GVWR.

**GAWR (Gross Axle Weight Rating)** - is the maximum permissible weight, including cargo, fluids, optional equipment and accessories that can be safely supported by a combination of all axles.

**UVW (Unloaded Vehicle Weight)\*** - is the typical weight of the unit as manufactured at the factory. It includes all weight at the unit's axle(s) and tongue or pin and LP Gas. The UVW does not include cargo, fresh potable water, additional optional equipment or dealer installed accessories.

**CCC (Cargo Carrying Capacity)\*\*** - is the amount of weight available for fresh potable water, cargo, additional optional equipment and accessories. CCC is equal to GVWR minus UVW. Available CCC should accommodate fresh potable water (8.3 lbs per gallon). Before filling the fresh water tank, empty black and gray tanks for more cargo capacity.

\*Estimated Average based on standard build optional equipment. \*\* Estimated average based on standard build optional equipment. Values estimated at time of printing.

Each Forest River RV is weighed at the manufacturing facility prior to shipping. A label identifying the unloaded vehicle weight of the actual unit and the cargo carrying capacity is applied to every Forest River RV prior to leaving our facilities. The load capacity of your unit is designated by weight, not by volume, so you cannot necessarily use all available space when loading your unit.

All information contained in this brochure is believed to be accurate at the time of publication. However, during the model year, it may be necessary to make revisions and Forest River, Inc., reserves the right to make all such changes without notice, including prices, colors, materials, equipment and specifications as well as the addition of new models and the discontinuance of models shown in this brochure. Therefore, please consult with your Forest River, Inc., dealer and confirm the existence of any materials, design or specifications that are material to your purchase decision.

©2024 Salem, a division of Forest River Inc., a Berkshire Hathaway company.



**Learn More**

Scan this barcode using a QR Reader on your smart phone to learn more about Forest River.



A Berkshire Hathaway company.

**24/7 EMERGENCY  
ROADSIDE ASSISTANCE  
WITH VEHICLE PURCHASE\***

TOWING  
JUMP-STARTS  
TIRE CHANGES  
FLUID DELIVERY  
LOCKOUT  
SERVICE

WINCH-OUT  
MOBILE MECHANIC  
TECHNICAL  
SUPPORT  
DEALER LOCATOR  
SERVICES



\*VALID FOR 1 YEAR FROM DATE OF PURCHASE