



FOREST RIVER
SIERRA

LUXURY FIFTH WHEELS

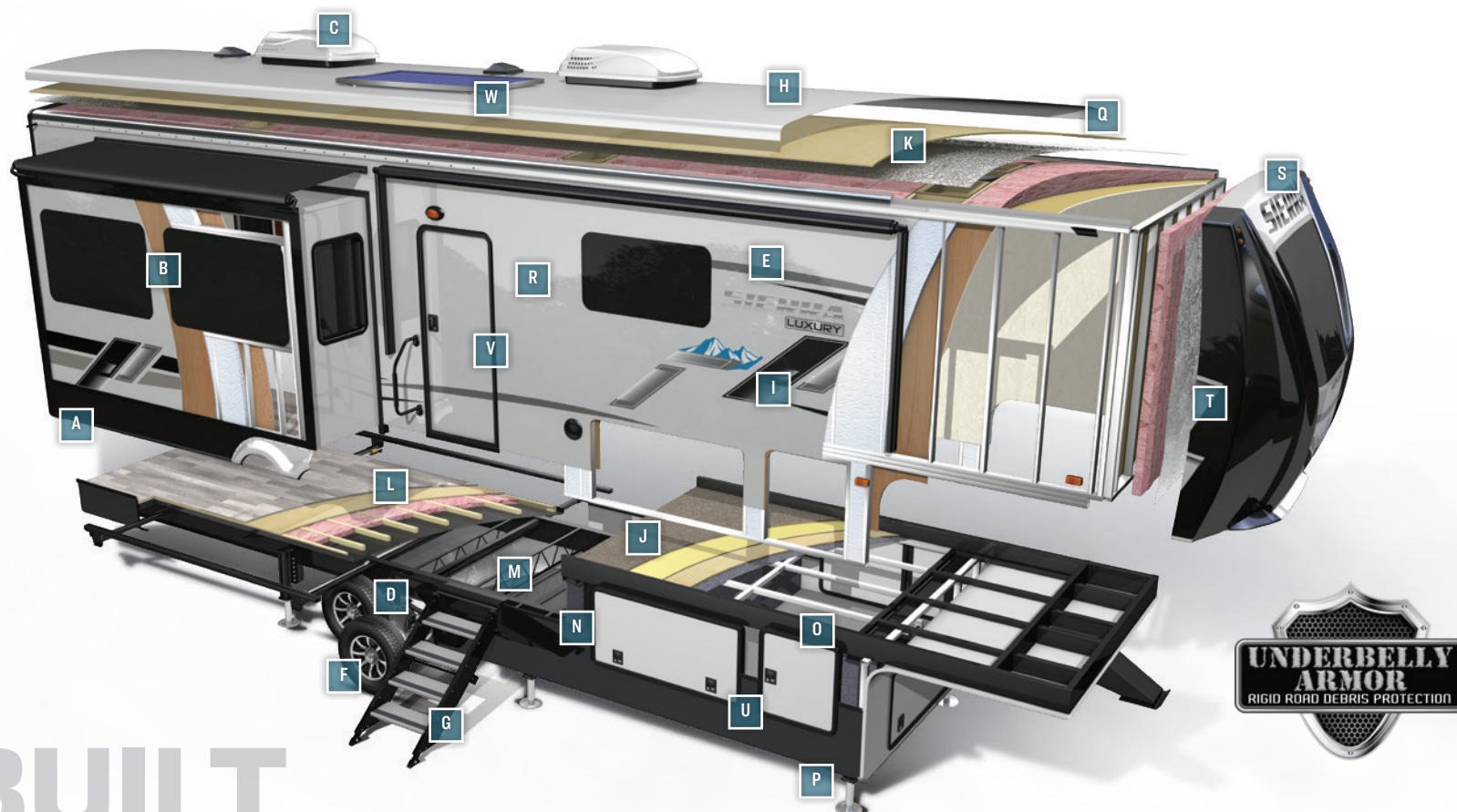


391FLRB

LUXURY FIFTH WHEELS

Sierra's mission is to combine luxury and comfort, with ease and options. Offering creative floorplans like front living, mid-bunk/offices, or bunkhouses, Sierra is certain to stand out among the rest. Features like automatic level up, 22 cubic foot french door refrigerator, and underbelly armor combine to create a perfect balance of size, space and luxury for any traveler.





BUILT TO LAST.

The Sierra is built to last using only the best materials to ensure that your coach is in it for the long haul. Careful engineering, well-appointed craftsmanship and an uncompromising sense of pride go into every fifth wheel that we produce. Rest assured that your Sierra is built for luxury living.

- | | | |
|---|--|---|
| A Rolled Aluminum Side Skirting | H Dicor Color Matched Seamless Roof (Lifetime Warranty) | P 6 Point Automatic Hydraulic Leveling System |
| B Tinted Safety Glass Windows (80%) | I 2" Block Foam Insulation | Q Sleek Radius Roof |
| C Dual Zone Ducted 15K BTU Air Conditioning Systems | J Deluxe Stain Resistant Carpet with Padding | R Color Matched High Gloss Gelcoat Fiberglass Exterior |
| D Lippert EZ Lube Axles with Self Adjusting Brakes | K 3/8" Roof decking (Full Walk-on Roof) | S Two-tone Painted Fiberglass Front Cap (Standard) |
| E Laminated Vacuum Bonded Aluminum Sidewalls with Underbelly Armor | L 5/8" Tongue and Groove Plywood Flooring | T Improved Front Cap for Sharper Turning Radius |
| F Goodyear® 16" Radial Tires (87 mph speed rating) | M Enclosed Underbelly | U Insulated Slam Lock Baggage Doors |
| G MORryde® "Step Above" with Strut Assist Entry Steps | N I-Beam Powder-Coated Frame with Rust Inhibitor | V Oversized Entry Doors |
| | O Aluminum Laminated and Insulated Bath Deck | W GoPower® 190W Roof Mounted Solar Panel with Controller and Battery |

SIERRA LUXURY FIFTH WHEEL

STANDARDS & OPTIONS

EXTERIOR FEATURES

- › 6-point hydraulic auto-leveling system
- › 7,000lb axles with Anti-lock Braking System
- › GoPower 200W roof mounted solar panel with controller and battery
- › Docking station: Easy winterization, hot and cold spray port, black tank flush, pull valves for tanks
- › Enclosed and heated dump valves
- › Underbelly Armor
- › Large tinted windows with 80/20 UV prohibitor
- › MORryde Step Above with strut (where available)
- › Electric awning with LED light strip
- › 16" Goodyear® Radial tires
- › TST Tire Pressure Monitoring System
- › Automotive-style fender skirts
- › Hitch light
- › Exterior kitchen (per floor plan)
- › Exterior LP Quick Connect with Grill/Griddle Cooktop
- › Painted two-tone aerodynamic fiberglass front cap with maximized turning radius
- › Color matched high gloss gel coat colored exterior fiberglass
- › Porch light with interior switch
- › 30 lb. double LP tanks on slide tray with auto change over
- › Prepped for Lippert On-The-Go Ladder
- › 2 LED lighted exterior speakers
- › Rain gutters with extra-long drip spouts (Prevents black streaking)
- › Insulated heavy duty slam lock baggage doors
- › Exterior fold-able grab handle
- › Unobstructed drop frame with pass through storage area with TV cable jack and 110V outlet
- › 2 spray ports with 25' hose (one on each side)
- › Upgraded aluminum rims
- › Friction hinge entry door

INTERIOR FEATURES

- › Fiberglass one-piece Shower with Folding Teak Seat
- › 3.7 cu. ft. Free Standing Range with 4 Burners

- › 19 cu. ft. Stainless Refrigerator (12V)
- › Hidden hinged, soft close drawers and cabinets
- › Washer/Dryer prep
- › 6' 4" Slide-out Height
- › Hardwood slide-out fascia
- › Stainless steel appliances
- › Wood plank linoleum
- › Decorative back splash
- › Soft close full extension drawer glides
- › Stainless steel under mounted kitchen sink
- › Handmade cabinetry with screwed lumber core stile construction
- › LED lighting throughout
- › Solid surface kitchen counter tops
- › Recessed residential lighting
- › Upgraded adjustable shower head with shelf
- › Theater seating with LED lighting
- › Accent lighting over dinette
- › LED lighting at islands
- › Night lights on fifth wheel steps
- › Walk-in shower with seat
- › Mocha accent crown molding over kitchen cabinets
- › Extra-large picture windows throughout
- › Vented side windows in slide-outs
- › TV antenna with booster
- › Solid wood drawer fronts with birch sides
- › Upgraded raised panel cabinet doors with designer rails
- › Bedroom slide out fascia
- › LED lighted headboard
- › Teddy Bear® bunk mats
- › 50" flat screen LED HD TV
- › Exceptional JBL Soundbar
- › Designer window treatment
- › Ceiling fan
- › Tri-fold hide-a-bed sofa
- › Residential stain resistant carpet
- › Quilted bedspread
- › Trash receptacle in kitchen

CONSTRUCTION

- › Welded 2" aluminum-framed, vacuum bonded laminated superstructure
- › 2" x 3" floor joists 12" on center
- › 5/8" tongue & groove plywood floor decking

- › 3/8" roof decking
- › Cambered powder coated frame with rust prohibitor
- › Fully enclosed heated underbelly
- › 5" truss roof rafters
- › R-10, 2" sidewall construction
- › Laminated sidewalls
- › Laminated slide-out walls

POPULAR OPTIONS

- › Tri-fold hide-a-bed with hinged bunk overhead (Bunk slides)
- › Free-standing dinette with 4 chairs (Per floor plan)
- › Washer and dryer
- › Generator prep
- › MaxxAir fan w/rain sensor
- › 32" bedroom TV
- › Central vacuum
- › Slide room awnings

FIFTH WHEEL COMFORT PACKAGE

- › Two 15K A/Cs with individual thermostats
- › Electric fireplace with 5,200 BTU output
- › 35K BTU furnace
- › High efficiency radiant foil (roof and floor)
- › Heated Holding Tanks (12V)

SAFETY PACKAGE

- › Smoke alarm
- › Fire extinguisher
- › Breakaway switch (battery hook-up required)
- › Dead-bolt lock on entry door
- › LP/CO gas detector
- › Fire escape windows

COMFORT PACKAGE

- › Goodyear Tires with 7,000lb axles
- › Two 15,000BTU Air Conditioners
- › Anti-lock Braking System
- › Tire Pressure Monitoring System
- › 60,000BTU On Demand Tankless Water Heater
- › BoonDock Solar System-200W Panel with controller & battery
- › MORryde Steps with Strut (Wherever available)
- › Heated and Enclosed Holding Tanks (12V pads)

- › Washer and Dryer Prep
- › King Wi-Fi Extender System and Olympus Antenna
- › Underbelly Armor
- › Soft Close Residential Drawers & Cabinets Throughout
- › 50" Flat Screen Television
- › 4 Camera Security Prep with Back-Up Camera prep
- › Full Coach Water Filter System
- › Power Fan in Kitchen and Bathroom(s)
- › Enclosed, One-Piece Docking Station
- › Color Matched Gel coated Fiberglass Exterior
- › Aerodynamic Two Tone Fiberglass Painted Front Cap with Lights
- › Solid Surface Countertops
- › Stainless Apron Sink with Strainer
- › Commercial Style Kitchen Faucet
- › 30" Over-the-Range Stainless Microwave
- › Countertop Extension
- › Designer Backsplash
- › Spare Tire
- › High Efficiency Radiant Foil (Roof and Floor)

LUXURY PACKAGE

- › High Gloss Exterior Gel Coated Fiberglass
- › 19 cu. ft. Stainless Refrigerator (12V)
- › 3.7 Free Standing Range with 4 Burners
- › Drop Z-Frame SuperStorage with MORryde tray
- › Hydraulic Six-Point Auto-leveling
- › Prep for 3rd AC
- › 4 Camera Security Prep with Back-up camera prep

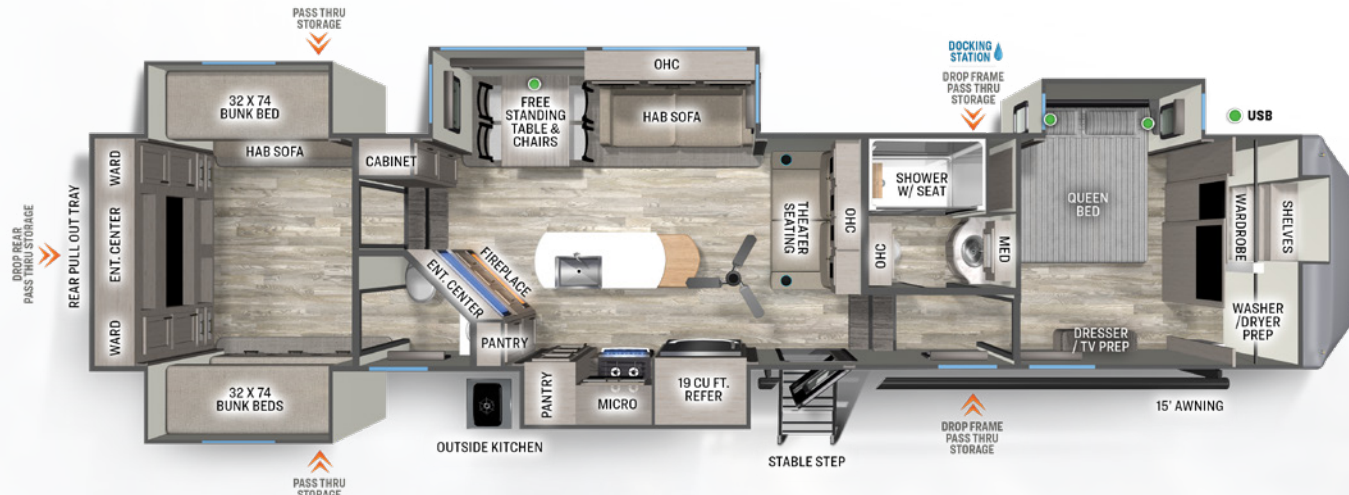
ULTIMATE ENTERTAINMENT PACKAGE

- › 50" Flat screen TV
- › Premium JBL soundbar
- › Exterior speakers

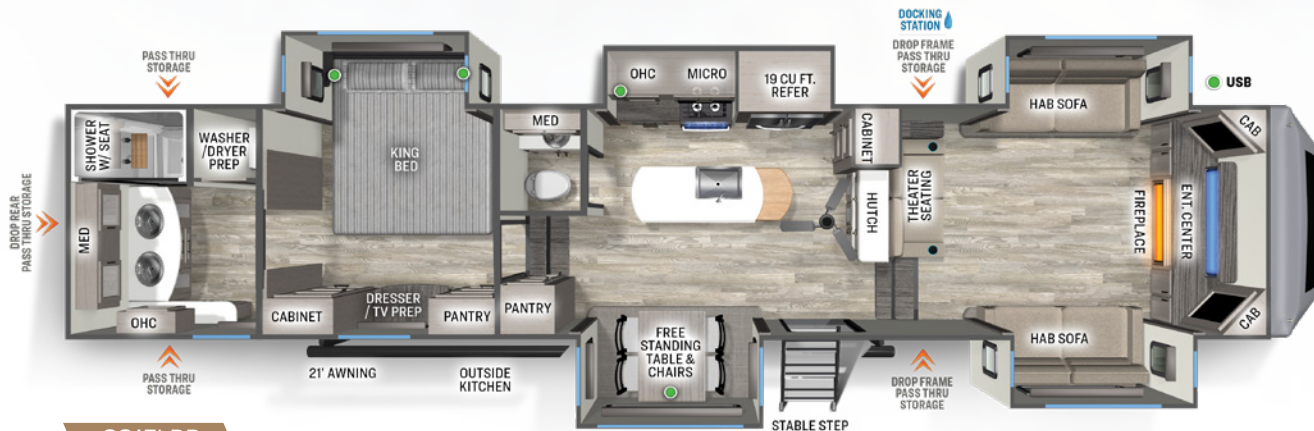
OPTIONAL POLAR TECH PACKAGE

- › Dual pane windows
- › 40K BTU furnace

SIERRA LUXURY FIFTH WHEEL FLOOR PLANS



388HRD
 HITCH (LBS.): 2115 UVW (LBS.): 12094 CGC (LBS.): 3000 LENGTH: 43' 8"
 EXT. HEIGHT: 13' 5" WIDTH: 96" TANKS (F/G/B): 50/104/104 AWNING: 15'



391FLRB
 HITCH (LBS.): 2560 UVW (LBS.): 13009 CGC (LBS.): 3000 LENGTH: 43' 6"
 EXT. HEIGHT: 13' 5" WIDTH: 96" TANKS (F/G/B): 50/149/82 AWNING: 21'

The DSI award confirms the commitment we have to our customers. From production to customer service, our team strives to provide a quality product and ongoing support to our customer base.



SIERRA WARRANTY. OUR PROMISE.

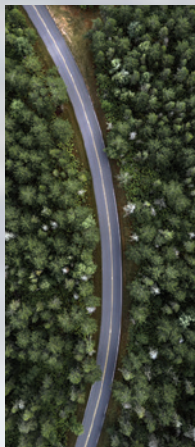
FOR DETAILS ON SIERRA'S COMPLETE WARRANTY PROGRAM, SEE YOUR SIERRA DEALER.

When it comes to backing products with the same quality and commitment it does when it begins the manufacturing process, the only name you have to remember when you're looking for a recreational vehicle is Sierra. Sierra offers the following additional limited warranties to the original purchasers. Consult written warranty for details.



PRE-DELIVERY INSPECTION FACILITY

20,000 square feet of quality assurance. The bare essentials for a premium product. This state-of-the-art facility gives immediate daily feedback to production for quality assurance in every unit built.



24/7 EMERGENCY ROADSIDE ASSISTANCE WITH VEHICLE PURCHASE*

TOWING
JUMP-STARTS
TIRE CHANGES
FLUID DELIVERY
LOCKOUT
SERVICE

WINCH-OUT
MOBILE MECHANIC
TECHNICAL
SUPPORT
DEALER LOCATOR
SERVICES



*VALID FOR 1 YEAR FROM DATE OF PURCHASE

CUSTOMER SATISFACTION



www.ForestRiverBuyLocal.com

FREE MEMBERSHIP
to Forest River Owners' Group

www.forestriverfrog.com



Learn More

Scan this barcode using a QR Reader on your smart phone to learn more about Forest River.



A Berkshire Hathaway company.

JOIN THE MOVEMENT



See what's happening on these media platforms
@SierraRVs

YOUR **SIERRA** DEALER

5547 CR. 1 ELKHART, INDIANA 46515

WWW.FORESTRIVERINC.COM/SIERRA | 574.389.4600

Specification Definitions :: GVWR (Gross Vehicle Weight Rating) - is the maximum permissible weight of the unit when fully loaded. It includes all weights, inclusive of all fluids, cargo, optional equipment and accessories. For safety and product performance do NOT exceed the GVWR. // **GAWR (Gross Axle Weight Rating)** - is the maximum permissible weight, including cargo, fluids, optional equipment and accessories that can be safely supported by a combination of all axles. // **UVW (Unloaded Vehicle Weight)** - is the typical weight of the unit as manufactured at the factory. It includes all weight at the unit's axle(s) and tongue or pin and LP Gas. The UVW does not include cargo, fresh potable water, additional optional equipment or dealer installed accessories. *Estimated average based on standard build optional equipment. // **CCC (Cargo Carrying Capacity)**** - is the amount of weight available for fresh potable water, cargo, additional optional equipment and accessories. CCC is equal to GVWR minus UVW. Available CCC should accommodate fresh potable water (8.3 lbs per gallon). Before filling the fresh water tank, empty the black and gray tanks to provide for more cargo capacity. ** Estimated average based on standard build optional equipment // Each Forest River RV is weighed at the manufacturing facility prior to shipping. A label identifying the unloaded vehicle weight of the actual unit and the cargo carrying capacity is applied to every Forest River RV prior to leaving our facilities. The load capacity of your unit is designated by weight, not by volume, so you cannot necessarily use all available space when loading your unit. // All information contained in this brochure is believed to be accurate at the time of publication. However, during the model year, it may be necessary to make revisions and Forest River, Inc., reserves the right to make all such changes without notice, including prices, colors, materials, equipment and specifications as well as the addition of new models and the discontinuance of models shown in this brochure. Therefore, please consult with your Forest River dealer and confirm the existence of any materials, design or specifications that are material to your purchase decision. Litho. U.S.A. FOR 2227 P/W: 2024.01.29