

COTTAGE

CEDAR CREEK

2025 **WIDEBODY DESTINATION** FLOORPLANS



FOREST RIVER

FORESTRIVERINC.COM

40CBK

HITCH WEIGHT
1,565 lb.

GVWR
15,565 lb.

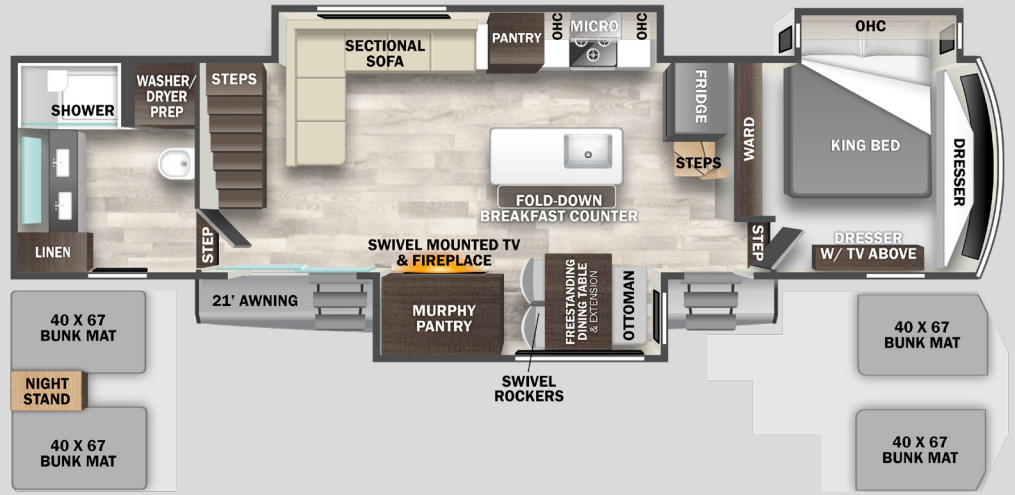
UVW
13,478 lb.

CCC
2,087 lb.

LENGTH
41' 6"

HEIGHT
13' 5"

WIDTH
101"



40CCK

HITCH WEIGHT
2,100 lb.

GVWR
14,000 lb.

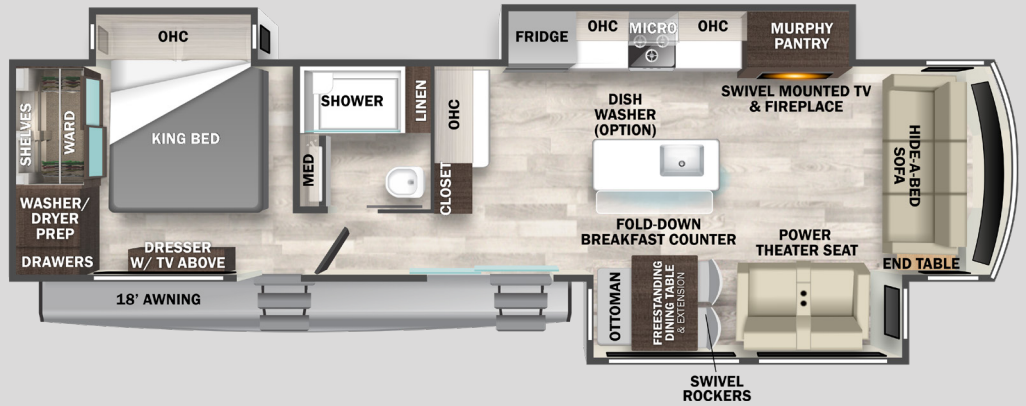
UVW
12,055 lb.

CCC
1,945 lb.

LENGTH
40' 6"

HEIGHT
13' 5"

WIDTH
101"



40CFD

HITCH WEIGHT
1,238 lb.

GVWR
13,238 lb.

UVW
11,977 lb.

CCC
1,261 lb.

LENGTH
42' 10"

HEIGHT
13' 5"

WIDTH
101"



40CRS

HITCH WEIGHT
1,345 lb.

GVWR
13,345 lb.

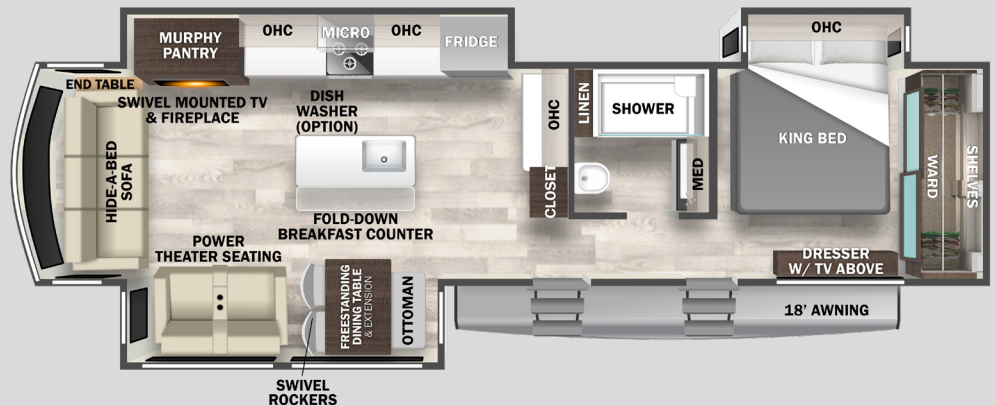
UVW
12,004 lb.

CCC
1,341 lb.

LENGTH
42' 5"

HEIGHT
13' 5"

WIDTH
101"



40CDL

HITCH WEIGHT
1,696 lb.

GVWR
13,696 lb.

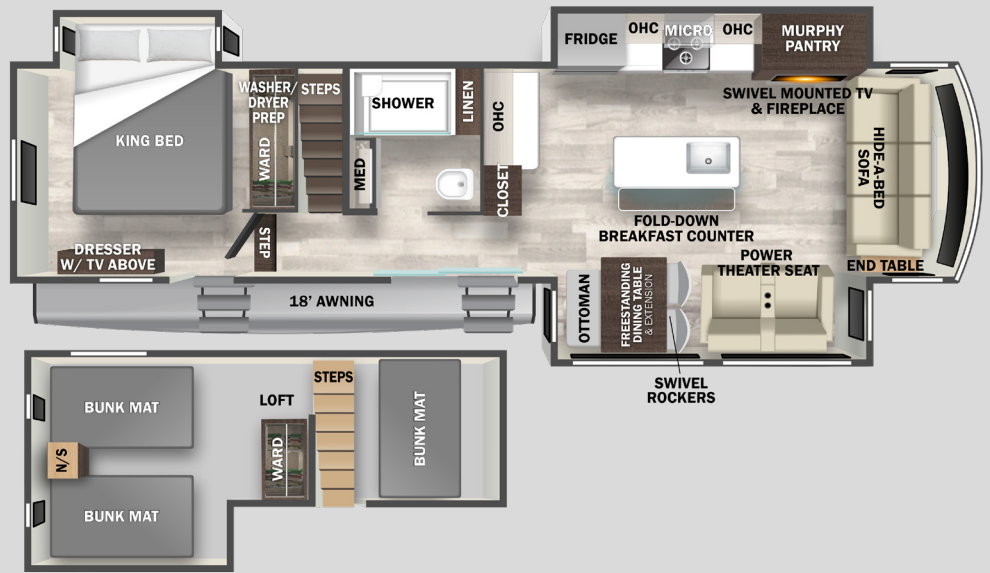
UVW
11,716 lb.

CCC
1,921 lb.

LENGTH
40' 6"

HEIGHT
13' 5"

WIDTH
101"



40RDE

HITCH WEIGHT
1,695 lb.

GVWR
14,000 lb.

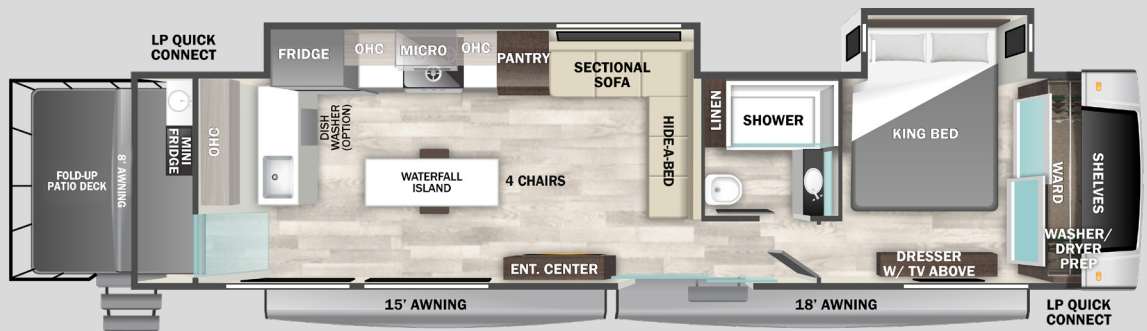
UVW
12,304 lb.

CCC
1,696 lb.

LENGTH
43'

HEIGHT
13' 5"

WIDTH
101"



INTRODUCING THE ALL NEW FIFTH WHEEL COTTAGE

41FWC

FEATURES

- Printed Gelcoat Exterior
- 38" x 80" Friction Hinge, Black Glass
- Entry Door with New Entry Door Latch Extension
- Hydraulic Front Jacks
- 60" Smart TV with Backlighting in LR
- J-Lounge Sofa with Pull Out Trundle creating Full Size Sleeping area
- Double Pull-out Pantry
- Pull Out Double Trash Bins
- Pull Out Flatware Cylinders
- Matte Luxe Cabinets and Fascia
- Splendide Stack Washer / Dryer
- Integrated Blackout Blinds Throughout
- Suburban ST-60 60,000 BTU Tankless Water Heater

HITCH WEIGHT
2,820 lb.

GVWR
20,820 lb.

UVW
14,314 lb.

CCC
2,250 lb.

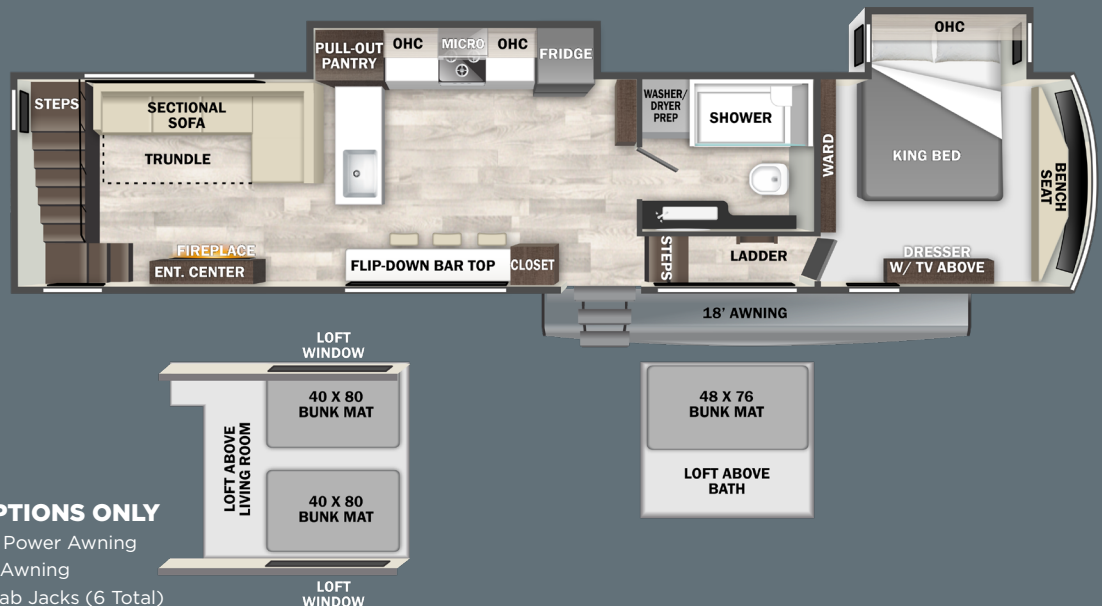
LENGTH
42' 6"

HEIGHT
13' 5"

WIDTH
101"

41FWC OPTIONS ONLY

- 18' Exterior Power Awning
- 2nd Power Awning
- 3 sets of Stab Jacks (6 Total)



CEDAR CREEK COTTAGE TOP FEATURE HIGHLIGHTS

EXTERIOR

- 101" Wide Body Frame
- "True" Gelcoat Exterior (The Best of the Best in Exteriors)
- Cedar Creek's Famous All Aluminum Superstructure on 16" Centers or less
- 3M® Bonded Sidewalls—Resilient, they grow stronger with age. They also have outstanding resistance to UV, heat, cold, moisture, oils, gasoline, and highway chemicals, which creates a bond that cannot delaminate with time.
- (2) 6000# Axles / FW (3) #6000# Axles
- 4' x 6' ABS, Ribbed, Removable Underbelly Panels
- AlphaPly TPO Roof Membrane with Lifetime Warranty - 40% Thicker
- Wired for a 3rd AC
- 12 Volt Heating Pads on All Black, Grey, & Fresh Water Tanks
- Detachable Entry Steps
- Electric Awning with LED Night Lights (Option on 41FWC)
- Dual Pane Patio Door (TT Only)
- Individual Shut Off Valves - Kitchen and Bathroom
- New Waterproof, Bug Proof Vixenite Slide Room floor panels
- 2 Coleman MACH 8 Plus 15,000 BTU Air Conditioners
- 20 Gallon Electric Hot Water Heater with Bypass Kit
- One Year of™ RV Roadside Assistance
- Free Membership to Forest River Owners Group F.R.O.G.

INTERIOR

KITCHEN / LIVING ROOM

- 19.6 cu. Ft., Glass Front, 12v. Refrigerator with Icemaker
- 3 Burner Gas Oven with Pull Out Pan Drawer
- Flush Floor Slides in Kitchen and Living Area
- Residential Kitchen Island with Solid Surface Counter with Flush Mount, Stainless Steel, Work Station Sink
- Breakfast Flip-Up Countertop in Island (Travel Trailer Only)
- Cordless Sweeper

- Murphy Pantry (Travel Trailer Only)
- Residential Dovetail, Self-Closing Drawers, and Hidden Hinge Cabinet Doors
- Stainless Steel, 30" Over the Range Microwave
- Under Island Pullout Caddy & Baking Tray Storage (Travel Trailer Only)
- Cutting Board Drawer with Cut-out Trash funnel (Travel Trailer only)
- Power Fan with Rain Sensor Override in Kitchen
- Vinyl Floor Covering
- Dining table with (2) chairs, Storage Ottoman, Table Extension, and Hidden Silverware Drawer (Travel Trailer Only)
- Walnut / Two Tone Wooden Cabinets and Fascias (Travel Trailer Only)
- Day / Night Roller Shades (Travel Trailer Only)
- Power Theater Seating with USB charging ports
- Luxury Hide-a-Bed Sofa

INTERIOR

BATHROOM / BEDROOM

- 48" x 30" One Piece, Fiberglass Shower with glass doors, and Upgraded Shower Head
- Large Bath Vanity with Solid Surface Countertop (Where Applicable)
- Large Vessel Sink, Bath Vanity (Where Applicable)
- 18" High Porcelain Toilet with Top Circular Flush System
- Create-A-Breeze Circulation Fan
- Extra Storage for Linens
- LED Night Lighting under the Vanity
- Residential Style Headboard with Luxurious Bedding Décor
- Individual Reading Lighting above the Bed
- USB Ports
- Standard 72 x 80 King Bed
- Flip-Up Dresser Top with Hidden Storage
- Black-Out Night Shades (Travel Trailer BR Only)

- Extra wide Valances that can accommodate C-pap machines in Bedroom
- Prepped for an Optional Washer and Dryer
- 12v Motion lighting in the Closet

ELECTRONICS

- 50" Smart Television w/Swing Arm (Travel Trailer Only)
- 32" Smart Television in the BR
- 12v. Bluetooth Stereo Speaker
- (2) Exterior Satellite & Cable Hook-Ups to Bedroom and LR
- New Cradle Point Wifi/5G Antenna and Day 1 Connectivity
- Pre-Wired for Satellite to the Roof

AVAILABLE OPTIONS

- 12' Power Awning on Dining Slide
- Slide-Out Awning Toppers
- Cadet Wall Mounted Heater with Circulation Fan
- Fisher / Paykel Dishwasher Drawer in the Island (N/A 41FWC)
- Dual Pane Frameless, Tinted Windows (N/A 41FWC)
- Heat Pump on Main Air Conditioner
- 30" Convection Microwave (N/A 41FWC)
- Splendide Washer / Dryer (Standard in FW)
- Upgraded Luxury King Bed
- 4 Sets of Stabilizer Jacks (TT Only)
- 3 Sets of Stabilizer Jacks (FW Only)

FABRIC CHOICES



LEATHERETTE

FABRIC

COTTAGE

CEDAR CREEK



FOREST RIVER INC. CEDAR CREEK DIVISION

501 Hawpatch Road • Topeka, IN 46571
Phone: 260-593-4013 • Parts & Service Phone: 260-593-4000

Visit our website at:

forestriverinc.com/cedar-creek-cottage

[@cedarcreekbyforestriver](https://www.instagram.com/cedarcreekbyforestriver)



Actual towing capacity is dependent on your particular loading and towing circumstances, which includes GVWR, GAWR and GCWR, as well as adequate trailer brakes. Please refer to the Owner's Manual of your vehicle for further information. All information contained in this brochure is believed to be accurate at the time of publication. However, during the model year, it may be necessary to make revisions and Forest River, Inc., reserves the right to make all such changes without notice, including prices, colors, materials, equipment and specifications as well as the addition of new models and the discontinuance of models shown in this brochure. Therefore, please consult with your Forest River dealer and confirm the existence of any materials, design or specifications that are material to your purchase decision. ©2024 Forest River, Inc., a Berkshire Hathaway company. All Rights Reserved. 8/24



FORESTRIVERINC.COM