

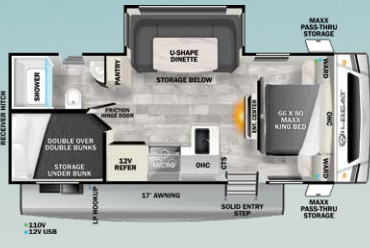
WILDCAT

BY FOREST RIVER

TRAVEL TRAILERS

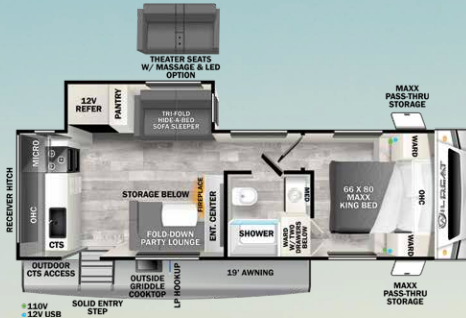


WILDCAT ONE TRAVEL TRAILERS



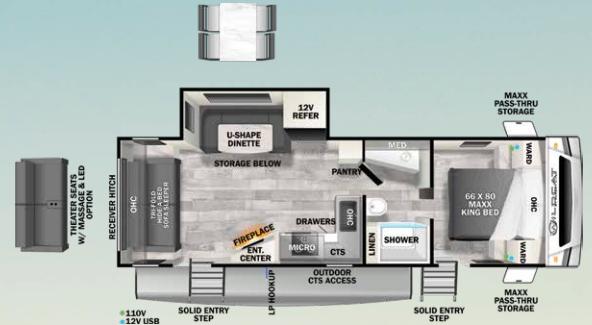
T244DBX-ONE

UVW	HITCH	CCC	LENGTH	HEIGHT	AWNING	CAPACITY (GAL)
6,186	665	3,279	29' 5"	11' 7"	17'	61 64 32



T248RKX-ONE

UVW	HITCH	CCC	LENGTH	HEIGHT	AWNING	CAPACITY (GAL)
6,523	670	2,947	30' 11"	11' 7"	19'	61 64 32



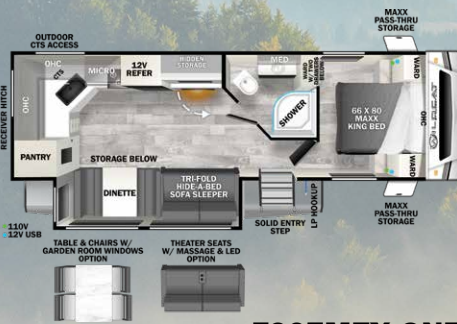
T263RSX-ONE

UVW	HITCH	CCC	LENGTH	HEIGHT	AWNING	CAPACITY (GAL)
6,595	678	2,883	31' 8"	11' 7"	19'	61 64 32



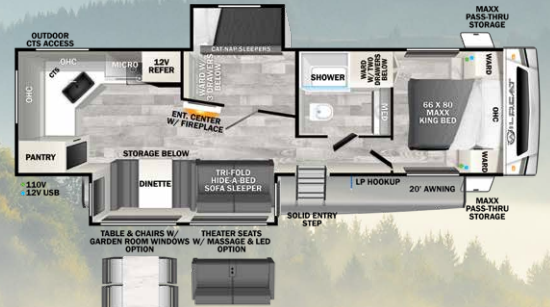
T265BSX-ONE

UVW	HITCH	CCC	LENGTH	HEIGHT	AWNING	CAPACITY (GAL)
TBD	TBD	TBD	TBD	TBD	TBD	TBD TBD TBD



T267MEX-ONE

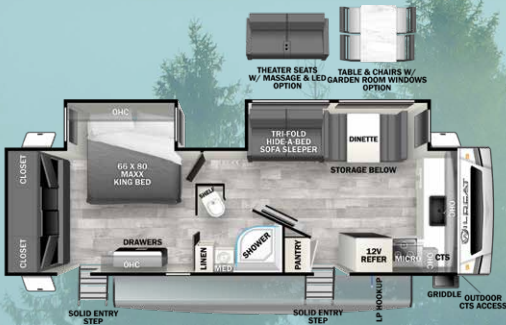
UVW	HITCH	CCC	LENGTH	HEIGHT	AWNING	CAPACITY (GAL)
6,976	933	2,757	32' 7"	11' 7"	20'	61 74 32



T304MBX-ONE

UVW	HITCH	CCC	LENGTH	HEIGHT	AWNING	CAPACITY (GAL)
7,671	768	1,897	35' 6"	11' 7"	20'	61 64 32

WILDCAT MAXX TRAVEL TRAILERS



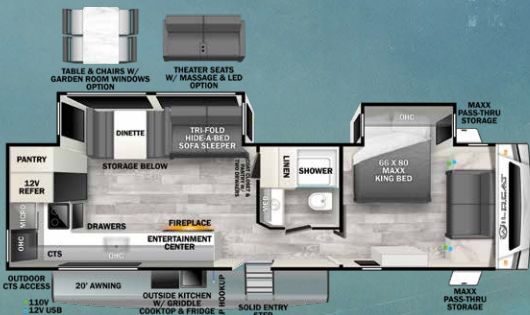
T276FKX-MAXX

UVW	HITCH	CCC	LENGTH	HEIGHT	AWNING	CAPACITY (GAL)
7,841	1,006	1,965	33' 11"	11' 7"	18'	61 64 32



T278RLX-MAXX

UVW	HITCH	CCC	LENGTH	HEIGHT	AWNING	CAPACITY (GAL)
8,153	824	1,471	34' 9"	11' 7"	20'	61 108 54



T310RKX-MAXX

UVW	HITCH	CCC	LENGTH	HEIGHT	AWNING	CAPACITY (GAL)
7,820	911	1,891	35' 11"	11' 7"	20'	61 64 32



T278RLX-MAXX

CONSTRUCTION

- 7' of Interior Ceiling Height (Travel Trailers) Industry First-Maxx Strong Laminated Aluminum Framing
- 2" Thick Alumicat Vacuum-Bonded Gel-Coated Laminated Sidewalls With 2" High Density Block Foam Insulation
- 2¼" Welded Aluminum Framed Laminated Floor with 2" High Density Block Foam Insulation and 25' Dyna Span Floor Decking with Limited 25 Year Warranty
- 6' Slide Out Height (2" Vacuum Bonded Sidewalls and Ceiling with 1" 9-Ply Plywood Floors and Astro Foil Insulation)
(Slide room is Laminated on all four Sides)
- Aerodynamic Engineered Fiberglass Front Cap with Lower Diamond Plate Protection
- Full Walk On Truss Roof (5" in The Center Tapered to 3" on The Edge For Adequate Water Run Off) with 3/8" Decking and One-Piece PVC Roof with 15-Year Warranty
- EZ Lube Axles with Self-Adjusting Brakes
- Floorplan Specific Engineered Cambered I-Beam Chassis with Mega Ground Clearance
- 15" Load Range 'E' Radial Tires
- All Seasons MAXX Insulation Package
- Quick Cool Ducted 13.5 BTU Air Conditioning with Prefabricated Styrofoam Duct Work
- Premium Grade Residential Carpeting with Stain Guard & Pad (Slideout Only)
- Fully Glued Residential Vinyl Flooring
- LP Gas Quick Connect for a BBQ or Outdoor Firepit
- Stylish 3M High-Definition Graphics Package with a 5-Year Warranty
- Outside Shower System With Hot and Cold Water
- One Touch Large Electric Awning with Added LED Strip Light
- Black Tank Flush Out Valve
- Tapered Front & Rear Skirt Metal for Added Ground Clearance
- 60,000 BTU On Demand/Quick Hot Tankless Water Heater with Active Freeze Protection (Endless Hot Water)
- 30" Main Entrance Door with Friction Hinge and Extra Large Grab Bar
- Best in Class Ultra Dark Tinted Safety Glass Panoramic Windows
- Rear Observation Camera Prep with Mounting Plate
- Rear Mounted Receiver for a Bike Rack or Storage Rack
- High Impact Molded Fender Skirt
- Spare Tire and Carrier
- Rear Wall Lippert Stow-and-Go Rear Ladder Bracket

EXECUTIVE KITCHEN

- Residential Shaker-Style Cabinet Doors
- Residential Hidden Hinges
- Solid Surface Countertops
- Black Finished Residential Door & Drawer Hardware
- Black Appliances
- Residential Full-Extension, Steel Ball-Bearing Drawer Guides
- Upgraded Microwave Oven
- Residential Size Black Stainless Steel Single Bowl Sink
- Black Pull-Out Residential Style Metal High-Rise Faucet with Pot Sprayer
- 10 Plus Cubic Foot Black Glass Front Quick Cool 12V Refrigerator with Auto Defrost
- Extra Large and Tall Overhead Cabinets with Shelf and Glass inserts
- Extra Large Pots and Pans Drawers (Most Models)
- 17" Oven with 3-Burner Cast Iron Range With Oven Ignitor and Light (Wildcat ONE Models)
- 21" Oven with 3-Burner Cast Iron Range with Oven Ignitor and Light (Wildcat MAXX Models)
- Glass Range Cover
- Residential Style Range Vent with Light & Fan
- Cutlery Drawer
- Cutting Boards (Backside of Sink Covers)
- Residential Kitchen Backsplash
- Central Trash System

LIVING ROOM FEATURES

- Extra Large Booth Dinette with Under Seat Cabinet Doors and Dual Pedestal Table (Most Models)
- Tri-Fold Memory Foam, Hide-A-Bed Sleeper Sofa
- Extra Large-Dual Panoramic Dark Tinted Safety Glass Picture Windows Behind Sofa & Dinette
- Black Out Roller Shades
- 12-Volt, LED HDTV with Integrated 2-Zone Bluetooth/FM Tuner and Soundbar (Size varies by Model)
- Satellite & Cable Prep
- 12V LED Decorative Lighting in Slide-Outs
- Slider Windows At Ends of Slide-Outs
- Command Center w/ Monitor Panel

BEDROOM FEATURES

- MAXX King 66" x 80" Long Residential Pillow-Top, Memory Foam Mattress
- Gas Struts to Lift Bed for Under-Bed Storage
- Fully Finished Bed Bases
- 7' High, Full Stand-Up Height in All Bedrooms
- Complete LED Lighting, Including Reading Lights
- Upgraded Residential Bedspread
- Shirt Closets on Each Side of Bed
- Bedroom Roof Vent
- CPAP & Tablet station at each side of bed (USB Ports & 110V plugs)
- Wardrobe (Most Models)
- Opening Windows for cross ventilation
- **Front windshield in Maxx Models Only**

BATHROOM FEATURES

- 12" Power Vent Fan
- Porcelain Toilet with Foot Pedal Flush (MAXX Models)
- Foot Pedal Flush Toilet (ONE Models)
- Built-In Wood Medicine Cabinet with Mirrored Doors
- GFI Protected Receptacle
- Towel Hooks
- Large 30" X 36" Shower (Most Models)
- Large Sink with Extra Counter Space
- Shower Surround With Retractable Door
- Opaque Skylight Dome Over Shower for Additional Light & Increased Height

SAFETY & SECURITY

- Carbon Monoxide Detector
- Smoke Detector
- LP Gas Detector
- Fire Extinguisher
- Large Axles with Self-Adjusting Brakes
- Emergency Escape Windows
- Safety Glass Windows
- No Slip Easy Load Entry Step
- 11,700 LB Safety Chains with Quick Disconnects
- Forest River Provided Roadside Assistance
- Backed by Forest River, a Subsidiary Of Berkshire Hathaway

OPTIONS

- Free Standing Table & 4 Chairs
- Garden Room (Includes Free Standing Table & Chairs)
- Dual Pane Windows
- 2ND 13.5 BTU A/C in Bedroom
- 15K BTU Ducted A/C
- Theater Seating IPO Tri-Fold Sofa with LED and Massage
- 16" Aluminum Wheels & Load Range 'E' Tires
- Washington State Seal
- MVSA
- Canadian Z-240
- 30 LB LP Tanks in Place of 20 LB

PEAK PACKAGE

- Front Windshield (MAXX Models)
- Black Tank Flush
- 10-Ply Load Range 'E' Tires
- Power Tongue Jack
- Friction Hinge Entry Doors
- Fold Down Entry Step (Main Entrance Only)
- Outside Kitchen (N/A on Some Models)
- MAXX King 66" x 80" Long Upgraded Mattress

- Large Single Bowl Stainless Steel Sink with Upgraded Designer Kitchen Faucet
- 21" 2-In-1 Range And Oven (MAXX Models)
- 10 Cubic Foot 12V Refrigerator
- Solid Surface Kitchen Countertops
- On Demand Water Heater
- Exterior Ladder Prep

ALL SEASON MAXX INSULATION PACKAGE

- Extreme Ply PVC Roofing with 15-Year Limited Warranty
- Underbelly Armor Fully Enclosed Underbelly with Removable Panels
- 12V Thermostatically Controlled Heat Pads on all Holding Tanks With Built-in Thermostat
- Wrapped and Insulated Holding Tanks, R-7 Blanket Insulation, and Reflective Astro Foil Wrapped
- 2" Vacuum-Bonded Aluminum Framed Sidewalls with R-10 High-Density Block Foam in Slide-Out Walls and Roof
- Maxx-Strength Aluminum Framed Laminated Floor with 2" R-10 High-Density Block Foam Insulation
- Double Layered R-7 Fiberglass Insulation in Roof with Solar Reflective Astro Foil
- R-7 Front Insulation Wrapped in Solar Reflective Astro Foil
- 1" Insulated, Oversized Slam-Latch Baggage Doors
- 30,000 BTU Furnace
- Exterior Vented Attic for Breathable Roof
- Electric Fireplace with Thermostat & Remote Control, Heats Up To 500 Square Feet
- 50 Amp Electric Service with 2ND A/C Prep (Option)
- Optional Dual Pane Windows
- Large LP Tanks with Auto Changeover and Protective Cover
- Remote Termination Dump Valves

DYNAMIC TECHNOLOGY PACKAGE

- Vacuum Bonded 2" Welded Aluminum Structure
- Back-Up Camera Prep
- Roof Mounted Solar Panel Prep
- AM/FM Digital TV Antenna with 4G & Wi-Fi Extender Prep
- Exterior TV Connection
- Frame-Mounted Receiver Hitch
- Battery Disconnect
- 12-Volt, LED HDTV with Integrated 2-Zone Bluetooth/FM Tuner and Soundbar (Size varies by Model)
- Cellphone/ CPAP & Tablet Station at Each Side of Bed (USB Ports & 110V Plugs)
- 200-Watt Solar System with 30 Amp Quick Charge Controller with 8 Gauge Wiring—Expandable to 600 Watts
- Auto Detect Power Center (Automatically Detects Acid or Lithium Batteries)

WILDCAT MAXX EXCLUSIVE FEATURES

- Aerodynamic Gel-Coated Fiberglass Front Cap with Front Windshield
- Electronic Stabilizer Jacks (Front and Rear)
- 21" Oven with a 3-Burner Cast Iron Range with Oven Ignitor
- Double Slide Out Floorplans
- Porcelain Foot Pedal Toilet





T267MEX-ONE



PRE-DELIVERY INSPECTION FACILITY

20,000 square feet of quality assurance. The bare essentials for a premium product. This state-of-the-art facility gives immediate daily feedback to production for quality assurance in every unit built.

CUSTOMER SATISFACTION



www.ForestRiverBuyLocal.com

Download our Forest River mobile app or visit our dynamic online manual to enhance your ownership experience. These interactive options provide incredible ease and insight into use, maintenance and enjoyment of your Forest River product.

Ranging from "How-To" videos, pictures and illustrations of various components, systems and features, to fully searchable content and downloadable PDFs for individual component owner's manuals, answers are always just a click away. View the online manual at www.forestriverinc.com/OnlineManual or download our FREE app from the App Store or Google Play!



FREE MEMBERSHIP
to Forest River Owners' Group

www.forestriverfrog.com



GVWR (Gross Vehicle Weight Rating) - is the maximum permissible weight of the unit when fully loaded. It includes all weights, inclusive of all fluids, cargo, optional equipment and accessories. For safety and product performance do NOT exceed the GVWR.

GAWR (Gross Axle Weight Rating) - is the maximum permissible weight, including cargo, fluids, optional equipment and accessories that can be safely supported by a combination of all axles.

UVW (Unloaded Vehicle Weight)* - is the typical weight of the unit as manufactured at the factory. It includes all weight at the unit's axle(s) and tongue or pin and LP Gas. The UVW does not include cargo, fresh potable water, additional optional equipment or dealer installed accessories.

CCC (Cargo Carrying Capacity)** - is the amount of weight available for fresh potable water, cargo, additional optional equipment and accessories. CCC is equal to GVWR minus UVW. Available CCC should accommodate fresh potable water (8.3 lbs per gallon). Before filling the fresh water tank, empty black and gray tanks for more cargo capacity.

*Estimated Average based on standard build optional equipment. ** Estimated average based on standard build optional equipment. Values estimated at time of printing.

Each Forest River RV is weighed at the manufacturing facility prior to shipping. A label identifying the unloaded vehicle weight of the actual unit and the cargo carrying capacity is applied to every Forest River RV prior to leaving our facilities. The load capacity of your unit is designated by weight, not by volume, so you cannot necessarily use all available space when loading your unit.

All information contained in this brochure is believed to be accurate at the time of publication. However, during the model year, it may be necessary to make revisions and Forest River, Inc., reserves the right to make all such changes without notice, including prices, colors, materials, equipment and specifications as well as the addition of new models and the discontinuance of models shown in this brochure. Therefore, please consult with your Forest River, Inc., dealer and confirm the existence of any materials, design or specifications that are material to your purchase decision.

©2024 Wildcat, a division of Forest River Inc., a Berkshire Hathaway company.



Learn More
Scan this barcode using a QR Reader on your smart phone to learn more about Forest River.



A Berkshire Hathaway company.



**24/7 EMERGENCY **
ROADSIDE ASSISTANCE
WITH VEHICLE PURCHASE***

TOWING
JUMP-STARTS
TIRE CHANGES
FLUID DELIVERY
LOCKOUT
SERVICE

WINCH-OUT
MOBILE MECHANIC
TECHNICAL
SUPPORT
DEALER LOCATOR
SERVICES



*VALID FOR 1 YEAR FROM DATE OF PURCHASE