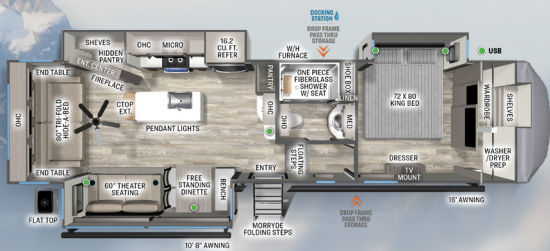


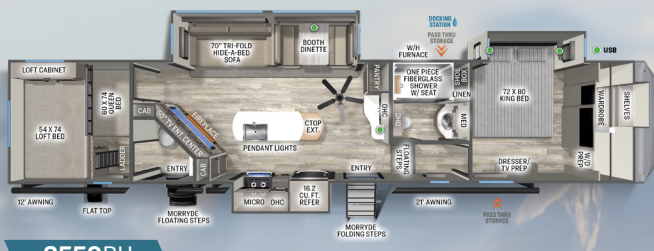
FOREST RIVER SIERRA

FIFTH WHEELS



3370RLS

HITCH (LBS.): 1,560 U/VW (LBS.): 10,319 CCC (LBS.): 3,241 LENGTH: 36' 4"
EXT. HEIGHT: 13' 4" WIDTH: 96" TANKS (F/G/B): 50/52/52 AWNING: 16' & 10' 8"



3550BH

HITCH (LBS.): 2,380 U/VW (LBS.): 12,044 CCC (LBS.): 3,456 LENGTH: 43' 6"
EXT. HEIGHT: 13' 4" WIDTH: 96" TANKS (F/G/B): 50/104/82 AWNING: 21' & 12'



3800RK

HITCH (LBS.): 2,405 U/VW (LBS.): 12,849 CCC (LBS.): 2,651 LENGTH: 44' 1"
EXT. HEIGHT: 13' 4" WIDTH: 96" TANKS (F/G/B): 50/156/52 AWNING: 16' & 13'



3880BH

HITCH (LBS.): 2,260 U/VW (LBS.): 13,599 CCC (LBS.): 2,661 LENGTH: 42' 2"
EXT. HEIGHT: 13' 4" WIDTH: 96" TANKS (F/G/B): 50 / 97 / 97 AWNING: 16' & 10' 8"



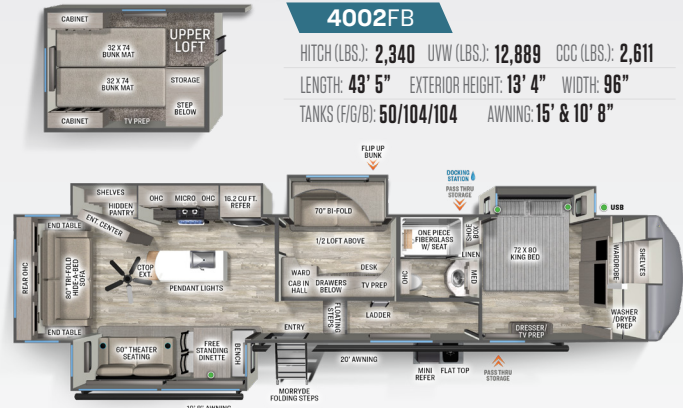
3990FL

HITCH (LBS.): 2,825 U/VW (LBS.): 12,439 CCC (LBS.): 2,936
LENGTH: 43' 6" EXTERIOR HEIGHT: 13' 4" WIDTH: 96"
TANKS (F/G/B): 50/82/52 AWNING: 21'



4002FB

HITCH (LBS.): 2,340 U/VW (LBS.): 12,889 CCC (LBS.): 2,611
LENGTH: 43' 5" EXTERIOR HEIGHT: 13' 4" WIDTH: 96"
TANKS (F/G/B): 50/104/104 AWNING: 15' & 10' 8"



4003MB

HITCH (LBS.): 2,010 U/VW (LBS.): 12,609 CCC (LBS.): 2,891 LENGTH: 42' 9"
EXT. HEIGHT: 13' 4" WIDTH: 96" TANKS (F/G/B): 50/104/52 AWNING: 20' & 10' 8"



FOREST RIVER

FORESTRIVERINC.COM

FOREST RIVER SIERRA

FIFTH WHEELS

EXTERIOR FEATURES

- › Automatic Electric Level-Up System
- › 2" Towing and Accessory Hitch (Where Available)
- › 7,000lb axles
- › Goodyear Radial Tires w/ anti-lock brakes
- › Lippert auto adjust brakes
- › GoPower 200W roof mounted solar panel with controller and battery
- › Quad MORryde® step above with strut (Where Available)
- › Color matched high gloss gel coated colored exterior fiberglass
- › Painted two tone aerodynamic fiberglass front cap with improved turning radius
- › Underbelly Armor
- › TST Tire Pressure Monitoring System
- › 16" Spare tire kit
- › Large tinted windows with 80/20 UV prohibitor
- › Electric awning with LED light strip
- › Prepped for Lippert On-The-Go Ladder
- › Power front jacks with spring loaded pins
- › Automotive-style fender skirts
- › Hitch light
- › Porch light with interior switch
- › 30 lb. double LP tanks with auto change over
- › Rain gutters with extra long drip spouts (Prevents black streaking)
- › Insulated heavy duty slam lock baggage doors
- › Exterior foldable grab handle
- › Unobstructed pass through storage area
- › Upgraded aluminum rims
- › Oversized friction hinge entry door
- › Exterior LP Quick Connect with Grill/Griddle Cooktop

INTERIOR FEATURES

- › Solid Surface Kitchen Counter tops
- › Fiberglass one-piece shower with folding teak seat
- › Washer and Dryer Prep
- › 6' 4" slide-out height
- › Stainless steel kitchen package
- › Beachside sundance linoleum
- › Hidden hinged, soft close drawers and cabinets
- › Full extension ball bearing drawer guides
- › Stainless steel under mounted kitchen sink
- › Trash receptacle in kitchen
- › Decorative backsplash
- › Two color coordinated interiors
- › LED lighting throughout
- › Recessed residential lighting
- › Accent lighting over dinette
- › Extra large, panoramic picture windows throughout
- › Vented side windows in slide-outs
- › TV antenna with booster
- › Solid wood drawer fronts with birch sides

- › Solid wood, square inset cabinet doors, painted or wood grain
- › Bedroom slide-out fascia
- › Memory foam mattress
- › Teddy Bear® bunk mats
- › 50" flatscreen smart TV
- › JBL Aura Cube FM/Bluetooth media center
- › Designer window treatment
- › Ceiling fan
- › Tri-fold hide-a-bed sofa
- › Quilted bedspread

APPLIANCES / SYSTEMS

- › Dual ducted 15k BTU Air Conditioners, prepped for 3rd 15k BTU AC
- › 16 cu. ft. 12V refrigerator
- › 60,000BTU On Demand Tankless Water Heater
- › 40,000BTU furnace
- › Heated Holding Tanks (12V)
- › Floor ducted 40,000BTU furnace
- › 30" OTR stainless steel microwave
- › Chef collection 3 burner / 24" oven with drawers
- › Interior monitor panel for holding tanks
- › Satellite and cable hookup with RG-6 cable for high quality picture
- › Porcelain foot flush toilet(s)
- › Power fan in Kitchen and Bathroom(s)
- › Full coach water filtration system

CONSTRUCTION

- › Welded aluminum-framed, vacuum bonded laminated superstructure
- › 5/8" tongue and groove plywood floor decking
- › 2 x 3 floor joists, 12" on center
- › Laminated sidewalls
- › 3/8" roof decking (Full walk-on roof)
- › Cambered powder coated frame with rust prohibitor
- › Underbelly armor
- › 5" truss roof rafters
- › R-10, 2" sidewall construction
- › Laminated slide-out walls

FOR YOUR SAFETY

- › Smoke alarm
- › Fire extinguisher
- › Breakaway switch (Battery hook-up required)
- › Dead-bolt lock on entry door
- › LP/CO gas detector
- › Fire escape windows

POPULAR OPTIONS

- › Free Standing Dinette in place of Booth (3550BH only)
- › Two chairs in place of ottoman bench
- › Portable vacuum
- › Slide room awnings (NA dinette slides)
- › Washer and Dryer

POLAR TECH PACKAGE (OPTIONAL)

- › Thermal pane windows
- › 3rd AC power saver direct dump system w/ wall thermostat

SUMMIT PACKAGE

- › Electric Auto Leveling System
- › Goodyear Tires with 7,000 lb axles
- › 2" Rear Receiver Hitch and 4-Pin Connector (Where Available) (NA 4002FB and 3990FL)
- › Two 15,000BTU Air Conditioners
- › Power fan in Kitchen and Bathroom(s)
- › Anti-lock Braking System
- › Tire Pressure Monitoring System
- › 60,000BTU On Demand Tankless Water Heater
- › BoonDocker Solar System-200W Panel with controller & battery
- › MORryde Steps with Strut (Where Available)
- › Heated and Enclosed Holding Tanks (12V pads)
- › Washer and Dryer Prep
- › King Wi-Fi Extender System and Olympus Antenna
- › Underbelly Armor
- › Soft Close Residential Drawers & Cabinets Throughout
- › 50" Flat Screen smart TV
- › 4 Camera Security Prep with Back-Up Camera prep
- › Full Coach Water Filter System
- › Enclosed, One-Piece Docking Station
- › Color Matched Gel coated Fiberglass Exterior
- › Aerodynamic Two Tone Fiberglass Painted Front Cap with Lights
- › High Efficiency Radiant Foil (Roof and Floor)
- › Spare Tire

CHEF'S KITCHEN PACKAGE (STANDARD)

- › 16 cu. ft. Stainless Refrigerator (12V)
- › Stainless Range with Cast Iron Grates
- › Solid Surface Countertops
- › Stainless Apron Sink with Strainer
- › Commercial Style Kitchen Faucet
- › 30" Over-the-Range Stainless Microwave
- › Countertop Extension
- › Designer Backsplash

Specification Definitions :: GVWR (Gross Vehicle Weight Rating) - is the maximum permissible weight of the unit when fully loaded. It includes all weights, inclusive of all fluids, cargo, optional equipment and accessories. For safety and product performance do NOT exceed the GVWR. // **GAWR (Gross Axle Weight Rating)** - is the maximum permissible weight, including cargo, fluids, optional equipment and accessories that can be safely supported by a combination of all axles. // **UVW (Unloaded Vehicle Weight)** - is the typical weight of the unit as manufactured at the factory. It includes all weight at the unit's axle(s) and tongue or pin and LP Gas. The UVW does not include cargo, fresh potable water, additional optional equipment or dealer installed accessories. *Estimated average based on standard build optional equipment. // **CCC (Cargo Carrying Capacity)** - is the amount of weight available for fresh potable water, cargo, additional optional equipment and accessories. CCC is equal to GVWR minus UVW. Available CCC should accommodate fresh potable water (8.3 lbs per gallon). Before filling the fresh water tank, empty the black and gray tanks to provide for more cargo capacity. **Estimated average based on standard build optional equipment. // Each Forest River RV is weighed at the manufacturing facility prior to shipping. A label identifying the unloaded vehicle weight of the actual unit and the cargo carrying capacity is applied to every Forest River RV prior to leaving our facilities. The load capacity of your unit is designated by weight, not by volume, so you cannot necessarily use all available space when loading your unit. // All information contained in this brochure is believed to be accurate at the time of publication. However, during the model year, it may be necessary to make revisions and Forest River, Inc., reserves the right to make all such changes without notice, including prices, colors, materials, equipment and specifications as well as the addition of new models and the discontinuation of models shown in this brochure. Therefore, please consult with your Forest River dealer and confirm the existence of any materials, design or specifications that are material to your purchase decision. Litho. U.S.A. FOR 2712 W. 2024.12.13