

AURORA



FOREST RIVER

FORESTRIVERINC.COM

AURORA LIGHT TRAVEL TRAILERS

13 BHX

HITCH WEIGHT (LB.)	348	UVW (LB.)	2,643
CARRYING CAPACITY (LB.)	1,500	EXT. LENGTH (BUMPER TO HITCH)	16'



13 RDX

HITCH WEIGHT (LB.)	304	UVW (LB.)	2,651
CARRYING CAPACITY (LB.)	1,500	EXT. LENGTH (BUMPER TO HITCH)	16'



13 RKX

HITCH WEIGHT (LB.)	277	UVW (LB.)	2,705
CARRYING CAPACITY (LB.)	1,572	EXT. LENGTH (BUMPER TO HITCH)	16'



18 BHSX

HITCH WEIGHT (LB.)	556	UVW (LB.)	4,183
CARRYING CAPACITY (LB.)	1,473	EXT. LENGTH (BUMPER TO HITCH)	23' 1"



19 RBS

HITCH WEIGHT (LB.)	684	UVW (LB.)	5,221
CARRYING CAPACITY (LB.)	2,000	EXT. LENGTH (BUMPER TO HITCH)	25' 6"



21 BH

HITCH WEIGHT (LB.)	514	UVW (LB.)	4,575
CARRYING CAPACITY (LB.)	2,000	EXT. LENGTH (BUMPER TO HITCH)	25' 11"



26 BH

HITCH WEIGHT (LB.)	544	UVW (LB.)	5,018
CARRYING CAPACITY (LB.)	1,500	EXT. LENGTH (BUMPER TO HITCH)	29' 4"



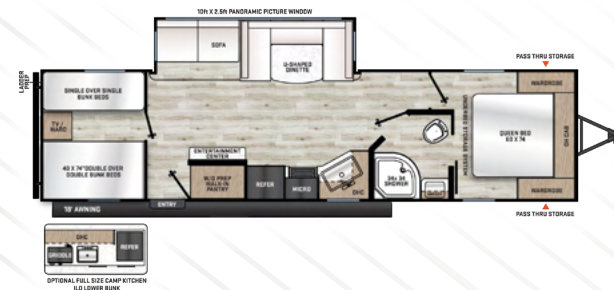
26 BHS

HITCH WEIGHT (LB.)	774	UVW (LB.)	6,066
CARRYING CAPACITY (LB.)	1,500	EXT. LENGTH (BUMPER TO HITCH)	30' 5"



28 QBUNK

HITCH WEIGHT (LB.)	976	UVW (LB.)	7,374
CARRYING CAPACITY (LB.)	1,500	EXT. LENGTH (BUMPER TO HITCH)	36' 2"



15 RBX

HITCH WEIGHT (LB.)	432	UVW (LB.)	3,105
CARRYING CAPACITY (LB.)	1,327	EXT. LENGTH (BUMPER TO HITCH)	19' 6"



15 RDX

HITCH WEIGHT (LB.)	384	UVW (LB.)	3,183
CARRYING CAPACITY (LB.)	1,201	EXT. LENGTH (BUMPER TO HITCH)	19' 6"



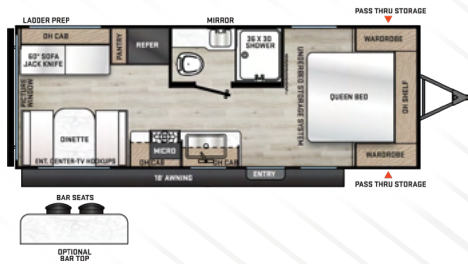
16 BHX

HITCH WEIGHT (LB.)	454	UVW (LB.)	3,109
CARRYING CAPACITY (LB.)	1,345	EXT. LENGTH (BUMPER TO HITCH)	19' 6"



22 EPIC

HITCH WEIGHT (LB.)	594	UVW (LB.)	4,806
CARRYING CAPACITY (LB.)	2,000	EXT. LENGTH (BUMPER TO HITCH)	25' 11"



23 BHS

HITCH WEIGHT (LB.)	762	UVW (LB.)	5,872
CARRYING CAPACITY (LB.)	1,890	EXT. LENGTH (BUMPER TO HITCH)	28' 4"



23 MKS

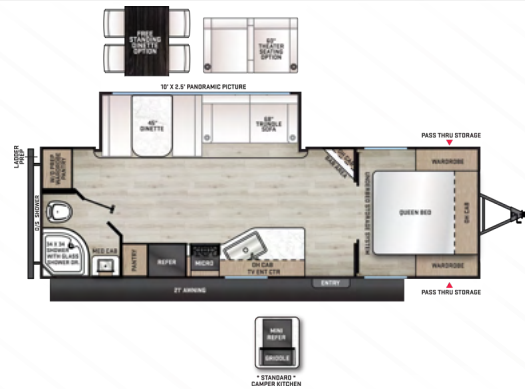
HITCH WEIGHT (LB.)	736	UVW (LB.)	5,654
CARRYING CAPACITY (LB.)	1,500	EXT. LENGTH (BUMPER TO HITCH)	28' 2"



AURORA TRAVEL TRAILERS

24 RBS

HITCH WEIGHT (LB.)	892
CARRYING CAPACITY (LB.)	1,500
UVW (LB.)	6,200
EXT. LENGTH (BUMPER TO HITCH)	28' 1"



29 QBS

HITCH WEIGHT (LB.)	888
CARRYING CAPACITY (LB.)	2,000
UVW (LB.)	7,124
EXT. LENGTH (BUMPER TO HITCH)	33' 7"



32 MAZE

HITCH WEIGHT (LB.)	1,236
CARRYING CAPACITY (LB.)	2,000
UVW (LB.)	9,130
EXT. LENGTH (BUMPER TO HITCH)	36' 8"



26 FKDS

HITCH WEIGHT (LB.)	854
CARRYING CAPACITY (LB.)	2,677
UVW (LB.)	6,977
EXT. LENGTH (BUMPER TO HITCH)	29' 4"



29 TQS

HITCH WEIGHT (LB.)	1,024
CARRYING CAPACITY (LB.)	1,932
UVW (LB.)	7,892
EXT. LENGTH (BUMPER TO HITCH)	36'



32 RLTS

HITCH WEIGHT (LB.)	1,062
CARRYING CAPACITY (LB.)	1,500
UVW (LB.)	8,842
EXT. LENGTH (BUMPER TO HITCH)	35' 10"



27 DBH

HITCH WEIGHT (LB.)	876
CARRYING CAPACITY (LB.)	2,000
UVW (LB.)	7,186
EXT. LENGTH (BUMPER TO HITCH)	33' 4"



31 KDS

HITCH WEIGHT (LB.)	1,042
CARRYING CAPACITY (LB.)	2,257
UVW (LB.)	7,743
EXT. LENGTH (BUMPER TO HITCH)	36' 3"



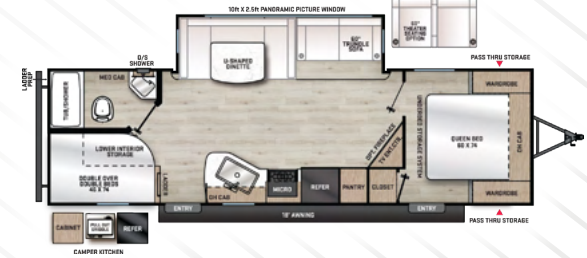
34 BHTS

HITCH WEIGHT (LB.)	1,310
CARRYING CAPACITY (LB.)	1,500
UVW (LB.)	8,936
EXT. LENGTH (BUMPER TO HITCH)	37' 10"



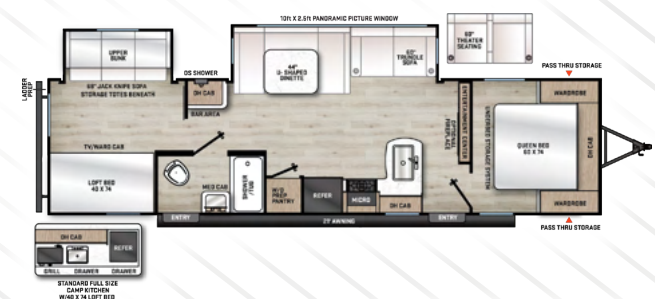
28 BHS

HITCH WEIGHT (LB.)	858
CARRYING CAPACITY (LB.)	1,500
UVW (LB.)	6,986
EXT. LENGTH (BUMPER TO HITCH)	32' 1"



32 BDS

HITCH WEIGHT (LB.)	1,054
CARRYING CAPACITY (LB.)	1,500
UVW (LB.)	8,154
EXT. LENGTH (BUMPER TO HITCH)	36' 1"



34 BHTS2Q

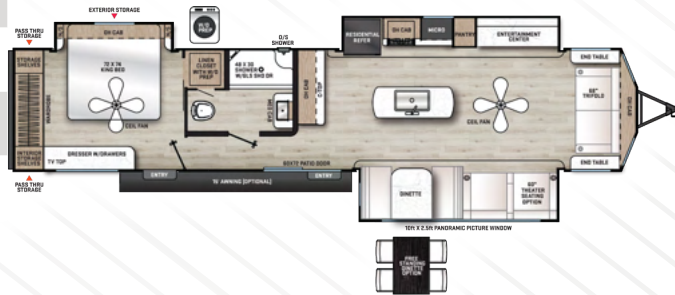
HITCH WEIGHT (LB.)	1,270
CARRYING CAPACITY (LB.)	3,116
UVW (LB.)	8,354
EXT. LENGTH (BUMPER TO HITCH)	37' 10"



AURORA DESTINATION TRAILERS

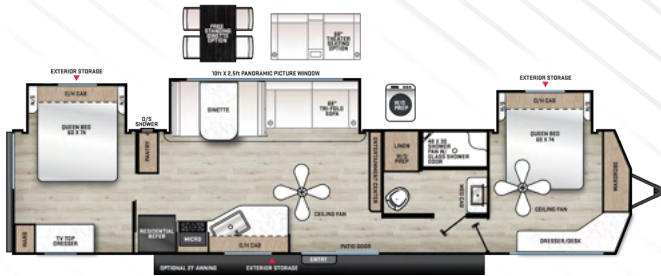
39 FLTS

HITCH WEIGHT (LB.)	1,254
CARRYING CAPACITY (LB.)	1,500
UVW (LB.)	10,323
EXT. LENGTH (BUMPER TO HITCH)	42' 11"



40 BHTS2Q

HITCH WEIGHT (LB.)	1,382
CARRYING CAPACITY (LB.)	1,984
UVW (LB.)	9,598
EXT. LENGTH (BUMPER TO HITCH)	40' 11"



43 CONDO

HITCH WEIGHT (LB.)	1,494
CARRYING CAPACITY (LB.)	1,500
UVW (LB.)	13,245
EXT. LENGTH (BUMPER TO HITCH)	43'



HITCH WEIGHT (LB.)	1,382
CARRYING CAPACITY (LB.)	1,984
UVW (LB.)	9,598
EXT. LENGTH (BUMPER TO HITCH)	40' 11"



42 CONDO

HITCH WEIGHT (LB.)	1,286
CARRYING CAPACITY (LB.)	1,000
UVW (LB.)	12,715
EXT. LENGTH (BUMPER TO HITCH)	44' 11"



44 CONDO

HITCH WEIGHT (LB.)	1,824
CARRYING CAPACITY (LB.)	1,000
UVW (LB.)	13,219
EXT. LENGTH (BUMPER TO HITCH)	44' 10"



AURORA TOY HAULERS

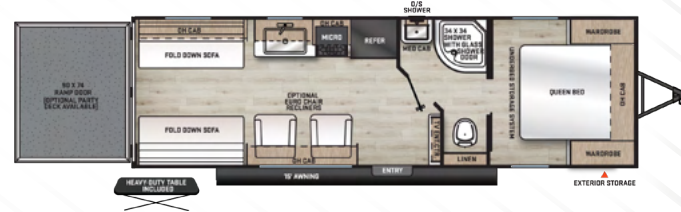
26 ATH

HITCH WEIGHT (LB.) 900

CARRYING CAPACITY (LB.) 2,663

UVW (LB.) 5,237

EXT. LENGTH (BUMPER TO HITCH) 30'



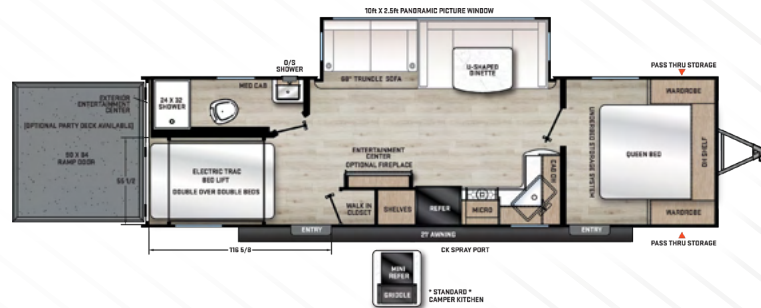
27 ATH

HITCH WEIGHT (LB.) 1,298

CARRYING CAPACITY (LB.) 3,000

UVW (LB.) 7,784

EXT. LENGTH (BUMPER TO HITCH) 33' 10"



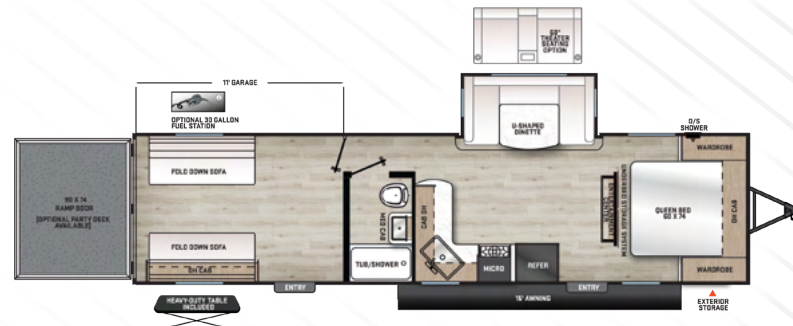
29 ATH

HITCH WEIGHT (LB.) 1,214

CARRYING CAPACITY (LB.) 3,000

UVW (LB.) 7,438

EXT. LENGTH (BUMPER TO HITCH) 35' 8"



THE AURORA ADVANTAGE

WHAT IS THE AURORA ADVANTAGE?

It's the collection of unique features offered in an Aurora RV to ensure a smoother ride, a better camping experience, and a trailer that will last for years.

- Full GE Kitchen Suite Appliances
- 60K BTU GE Tankless Water Heater
- Roof Mount A/C with Heat Pump
- Solid Surface Countertops in Kitchen *
- Porcelain Toilet IPO Plastic *
- 2-Way 12V Maxxair Vent Fan in Living Room *
- Flip Down Solid Steps
- Screwed Cabinet Construction with Pocket Bored Lumber Core Stiles
- Front Radius Lights
- Norco Electromagnetic, Powder Coated Chassis

* — N/A Aurora Light Travel Trailers

EACH NEW FOREST RIVER PURCHASE PROVIDES:

- ✓ Pre-delivery Inspection.
- ✓ Digital Owner's Manual.
- ✓ Free Membership to Forest River Owners Group (FROG).
Learn more at www.forestriverfrog.com.
- ✓ A Contribution to Care Camps Foundation www.carecamps.org.
- ✓ 1 Year Free Roadside Assistance from Date of Purchase.



LEARN MORE:

Scan this QR code with your mobile device to learn more about Forest River.



SPECIFICATION DEFINITIONS:

Scan this barcode using a QR reader on your smartphone to learn RV terminology and more!



YOUR AURORA DEALER

All information contained in this brochure is believed to be accurate at the time of publication. However, during any model year, it may be necessary to make changes to the manufacturing process of the units and information in this brochure. Your unit may differ from the information in this brochure due to any changes in the manufacturing process and equipment. Forest River, Inc., reserves the right to make all such changes without notice, including prices, colors, combinations, materials, equipment and specifications of any model as well as the addition of new models and the discontinuance of models shown in this brochure. Therefore, please consult with your Forest River dealer and confirm the availability of any materials, combinations, designs, or specifications that are meaningful to your purchase decision. © 2025 Forest River RV, a Division of Forest River, Inc., a Berkshire Hathaway Company. All Rights Reserved. Forest River, Inc. 12/25

AURORA

Forest River RV, a Division of Forest River, Inc.,
A Berkshire Hathaway Company
P.O. Box 3030, Elkhart, IN 46515-3030