

# COTTAGE

## CEDAR CREEK

2026 **TRAVEL TRAILER** FLOORPLANS



**FOREST RIVER**

[FORESTRIVERINC.COM](http://FORESTRIVERINC.COM)





# OUR STORY

For over 27 years, Cedar Creek has been dedicated to helping people experience the joy of the outdoors by building high-quality recreation vehicles.

**The Cedar Creek Advantage** - Cedar Creek fifth wheels and wide-body destination TT & FW's by Forest River deliver one of the best-built products designed specifically for RV living. Our unique, All-Aluminum super-structure, on 16" centers or less, and "True" Gelcoat Exteriors reflect a residential-style construction without the use of purchased, laminated sidewalls. Cedar Creek is our customers' first choice in RV'ing and long-lasting durability.

Cedar Creek - **the Smart Choice for the Experienced RV'er**

## 40CBK

**Hitch Weight:** 2,087 lbs.

**GVWR:** 15,565 lbs.

**UVW:** 13,478 lbs.

**CCC:** 2,087 lbs.

**Length:** 41' 6"

**Height:** 13' 5"

**Width:** 101"



## 40CCK

**Hitch Weight:** 1,810 lbs.

**GVWR:** 14,000 lbs.

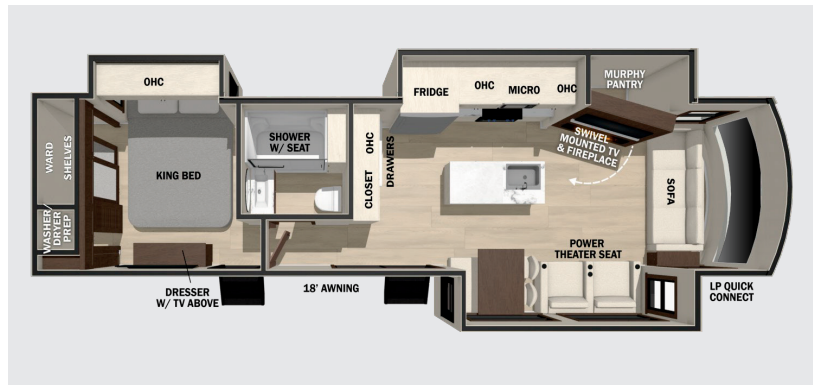
**UVW:** 12,474 lbs.

**CCC:** 1,526 lbs.

**Length:** 40' 6"

**Height:** 13' 5"

**Width:** 101"



## 40CDL

**Hitch Weight:** 1,696 lbs.

**GVWR:** 14,000 lbs.

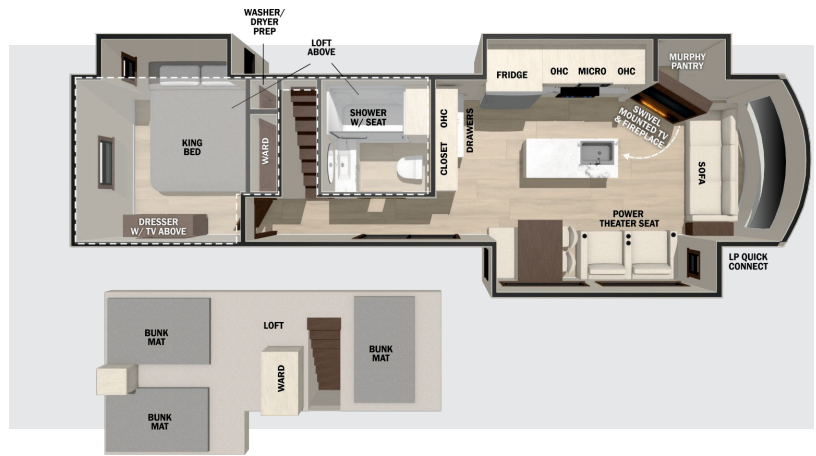
**UVW:** 12,754 lbs.

**CCC:** 1,246 lbs.

**Length:** 40' 6"

**Height:** 12' 10"

**Width:** 101"



## 40CRS

**Hitch Weight:** 1,341 lbs.

**GVWR:** 14,000 lbs.

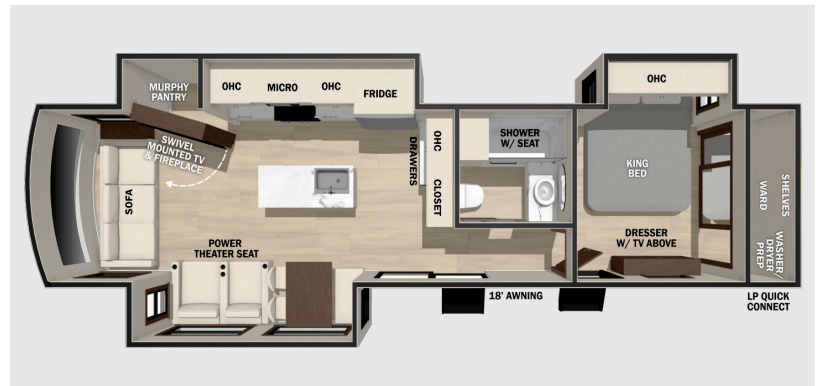
**UVW:** 12,269 lbs.

**CCC:** 1,731 lbs.

**Length:** 42' 5"

**Height:** 13' 5"

**Width:** 101"



## 40CFL2B

**Hitch Weight:** 1,530 lbs.

**GVWR:** 14,000 lbs.

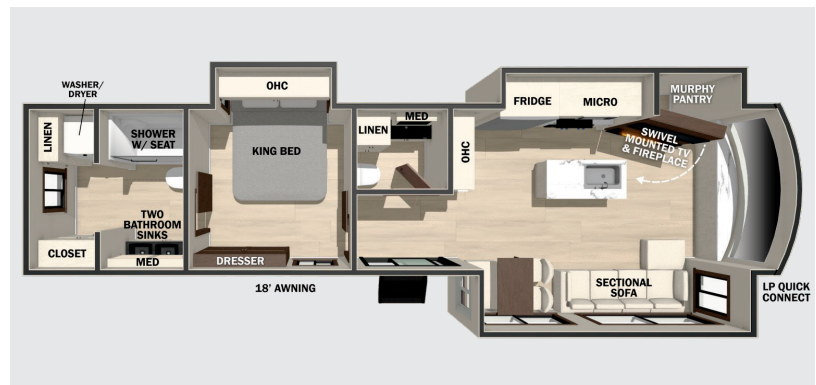
**UVW:** 12,845 lbs.

**CCC:** 1,096 lbs.

**Length:** 41' 3"

**Height:** 13' 5"

**Width:** 101"





## Exterior

- New 3" Wall with R11 Insulation
- New 80" Tall, Dual Pane Patio Door
- New 3 Coleman MACH 8 Energy Saver 15,000 BTU Air Conditioners
- New "Dual Pane" Square Windows with Reflective Integrated Shade & Screens
- 101" Wide Body Frame
- "True" Gelcoat Exterior (The Best of the Best in Exteriors)
- Cedar Creek's Famous All-Aluminum Superstructure on 16" Centers or less
- 3M® Bonded Sidewalls—Resilient, they grow stronger with age. They also have outstanding resistance to UV, heat, cold, moisture, oils, gasoline, and highway chemicals, which creates a bond that cannot delaminate with time.
- TT only (2) 7000# Axles
- 4' x 6' ABS, Ribbed, Removable Underbelly Panels
- AlphaPly TPO Roof Membrane featuring a Lifetime Warranty - 40% Thicker
- Suburban ST-60 60,000 BTU Tankless Water Heater
- 12-Volt Heating Pads on All Black, Grey, & Fresh Water Tanks
- Electric Awning with LED Night Lights
- Individual Shut Off Valves - Kitchen and Bathroom
- New Waterproof, Bug-Proof Vixenite Slide Room floor panels

- New Fenderskirt with pop rivets
- One Year of™ RV Roadside Assistance
- Free Membership to Forest River Owners Group F.R.O.G.

## Electronics

- 50" Smart Television w/Swing Arm
- 32" Smart Television in the BR
- 12v Bluetooth Stereo Speaker in ceiling
- New Travelfi™ Pay as you go internet

## Kitchen / Living Room

- 20 Cu. Ft. Stainless Steel, 110v Refrigerator
- 3 Burner Gas Oven with Pull-Out Pan Drawer
- Vixenite™ Flush Floor Slides in Kitchen and Living Area
- Flush Floor Slides in Kitchen and Living Area
- Residential-Style Kitchen Island with Solid Surface Counter with Flush Mount, Stainless Steel, Work Station Sink
- Murphy Pantry
- Residential-Style Dovetail, Self-Closing Drawers, and Hidden Hinge Cabinet Doors
- Stainless Steel, 30" Over the Range Microwave
- Cutting Board Drawer with Cut-out Trash Funnel
- Power Fan with Rain Sensor Override in Kitchen
- Prepped for Dishwasher
- Vinyl Floor Covering
- Dining table with (2) chairs, Storage Ottoman, Table Extension, and Hidden Silverware Drawer
- New Single Window, Fiberglass Cap with Electric Sidewinder Blackout Shade (W/A)
- New 52" Ceiling Fan in the Living room
- Power Theater Seating with USB charging ports (40CCK, 40CRS, 40CDL)
- Luxury Hide-a-Bed Sofa W/A or "L" Sofa with W/A

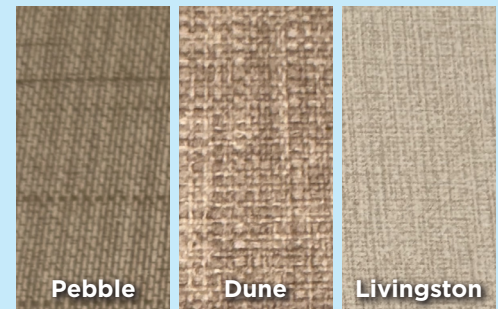
## Bathroom / Bedroom

- 48" x 30" One Piece, Fiberglass Shower with glass doors, and Upgraded Shower Head
- Large Bath Vanity with Solid Surface Countertop (Where Applicable)
- 18" High Porcelain Toilet with Top Circular Flush System
- Extra Storage for Linens
- LED Night Lighting under the Vanity
- Residential-Style Headboard with Luxurious Bedding Décor
- Individual Reading Lighting above the Bed
- USB Ports
- Standard 72 x 80 King Bed
- Flip-Up Dresser Top with Hidden Storage
- Prepped for an Optional Washer and Dryer
- 12V Motion lighting in the Closet

## Options

- 12' Power Awning on Dining Slide
- Slide-Out Awning Toppers
- Fisher / Paykel Dishwasher Drawer in the Island
- Heat Pump
- Splendide Washer / Dryer
- 4 Sets of Stabilizer Jacks

## Fabrics



**CEDAR CREEK**

**CONNECT WITH US**  
open your camera app

**SCAN ME**  
FOR RESOURCES

**ForestRiverInc.com/CedarCreek**

Specifications					
Model	40CBK	40CCK	40CDL	40CRS	40CFL2B
Exterior Length	41'6"	40'6"	40'6"	42'5"	41'3"
Exterior Height with Air Conditioner	13'5"	13'5"	12'10"	13'5"	13'5"
Exterior Width	101"	101"	101"	101"	101"
Hitch Weight	2,087	1,810	1,696	1,341	1,530
Unloaded Vehicle Weight	13,478	12,474	12,754	12,269	12,845
GVWR	15,565	14,000	14,000	14,000	14,000
Gross Cargo Capacity	2,087	1,526	1,246	1,731	1,096
Awning Size	21'	18'	18'	18'	18'

## EACH NEW FOREST RIVER PURCHASE PROVIDES:

- ✓ Pre-delivery Inspection.
- ✓ Digital Owner's Manual.
- ✓ Free Membership to Forest River Owners Group (FROG).  
Learn more at [www.forestriverfrog.com](http://www.forestriverfrog.com).
- ✓ A Contribution to Care Camps Foundation [www.carecamps.org](http://www.carecamps.org).
- ✓ 1 Year Free Roadside Assistance from Date of Purchase.



## LEARN MORE:

Scan this QR code with your mobile device to learn more about Forest River.



## FOREST RIVER INC. CEDAR CREEK DIVISION

501 Hawpatch Drive, Topeka, IN 46571  
(260) 593-4000

**BUY LOCAL**

YOUR **CEDAR CREEK** DEALER