

ROCKWOOD

— SIGNATURE —



TRAVEL TRAILERS | FIFTH WHEELS



FOREST RIVER

FORESTRIVERINC.COM



FOREST RIVER

A Berkshire Hathaway Company

BUILT AND BACKED BY FOREST RIVER

Founded in 1996 by Pete Liegl, Forest River, Inc. has evolved into North America's largest manufacturer of recreational vehicles, cargo trailers, pontoon boats, and commercial vehicles including buses, vans, and trucks. Its portfolio includes market share leaders in every category, and it is the country's leading manufacturer of buses and vans for both the private and public sectors. Based in Elkhart, Indiana, Forest River employs 14,000+ employees in 100+ facilities in more than a half dozen states. With a commitment to excellence and a focus on customer satisfaction, Forest River is proud to be a Berkshire Hathaway company.

NEVER STOP GOING.™

FORESTRIVERINC.COM





ROCKWOOD

The story of Rockwood is deeply intertwined with the town of Millersburg, Indiana. Here, generations of families have contributed to the creation of RVs known for their reliability and lasting value. “Millersburg Made” signifies a commitment to community and a dedication to building RVs you can trust. It’s the assurance that your Rockwood has been built with care, by people who take pride in their work and stand behind every RV that leaves our doors.



**MILLERSBURG
MADE**



TRAVEL TRAILERS

POLISHED LIVING, UNCOMPROMISED JOURNEY



Elevated and elegant, the Rockwood Signature travel trailer redefines what's possible in a traditional towable RV. With luxurious interiors, expansive slide-outs, and a host of high-end amenities, the Signature line is crafted for seasoned travelers who value both comfort and sophistication. Every detail—from the premium entertainment systems to the thoughtfully designed kitchens—caters to extended stays and effortless living on the road.



**SCAN TO VIEW PRICING AND
MORE INFORMATION OR VISIT:**

[FORESTRIVERINC.COM/RVS/ROCKWOOD-SIGNATURE-TRAVEL-TRAILERS](https://forestriverinc.com/rvs/rockwood-signature-travel-trailers)

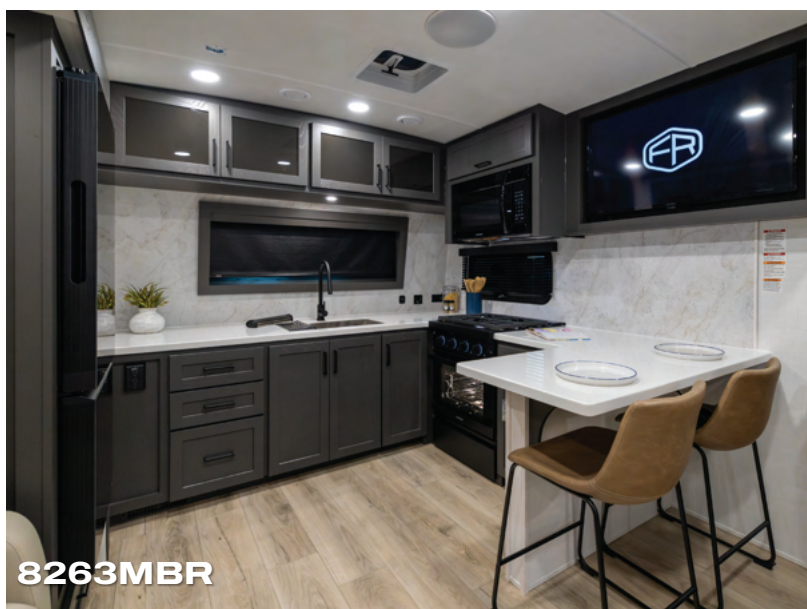




8336BH



8263MBR



8263MBR



8336BH

TRAVEL TRAILERS KEY FEATURES

- 6-Sided Aluminum Framing w/Aluminum Dinettes, Bed Bases & Composite Construction
- One Piece Vacuum Laminated Roof w/High Density Block Foam Insulation
- 5/8" Tongue & Groove Plywood Floors w/One Piece Seamless Linoleum Coverage
- Dexter® Torflex® Axles with Tow Assist ABS and Sway Mitigation System (8421DB: Curt® Slipper Roller Axles, ABS)
- Goodyear Endurance Tires w/Balance Beads & Wheel-Banded Tire Pressure Monitoring System (TPMS)
- MORryde Strut Assist Steps & Extended Entry Door Grab Handle

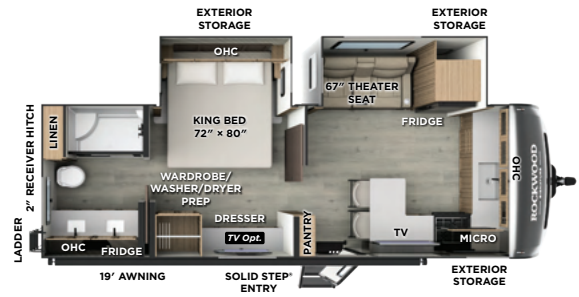
8263MBR

UVW: 7655 lb

CCC: 2210 lb

Hitch Weight: 1022 lb

Exterior Length: 29' 11"



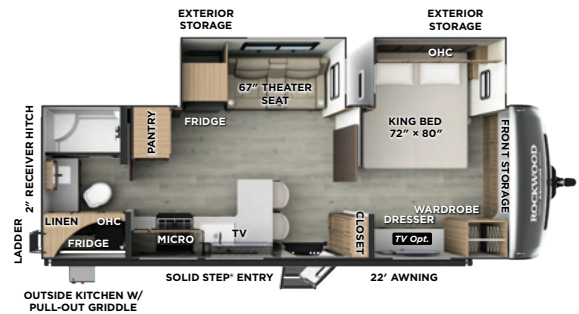
8265KBS

UVW: 7649 lb

CCC: 2161 lb

Hitch Weight: 1010 lb

Exterior Length: 29' 11"



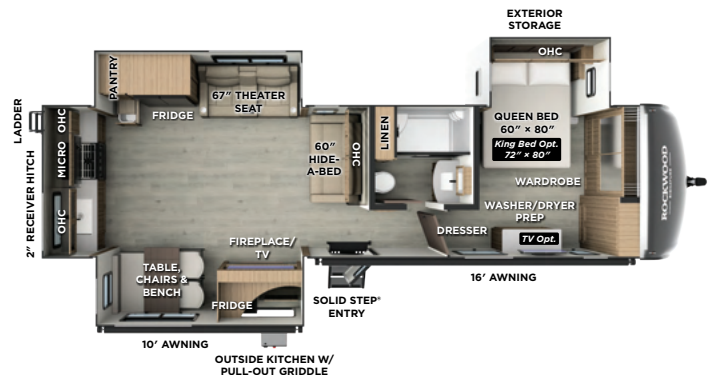
8332SB

UVW: 9614 lb

CCC: 1703 lb

Hitch Weight: 1317 lb

Exterior Length: 36' 8"



8336BH

UVW: 9858 lb

CCC: 1518 lb

Hitch Weight: 1376 lb

Exterior Length: 36' 8"



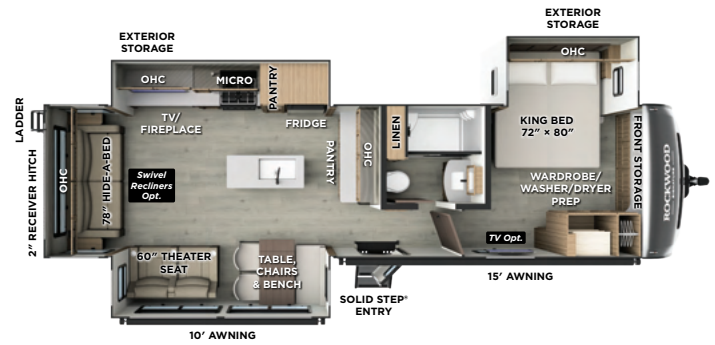
8337RL

UVW: 9539 lb

CCC: 1819 lb

Hitch Weight: 1358 lb

Exterior Length: 36' 8"



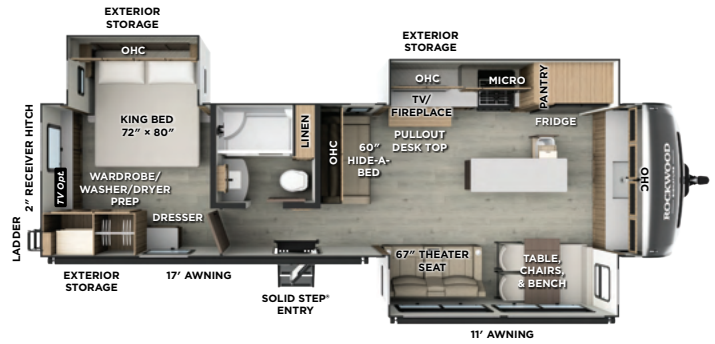
8339FK

UVW: 9474 lb

CCC: 1821 lb

Hitch Weight: 1295 lb

Exterior Length: 36' 10"



8421DB NEW

UVW: 11259 lb

CCC: 2126 lb

Hitch Weight: 1385 lb

Exterior Length: 42'



TRAVEL TRAILERS SPECIFICATIONS

Floorplan	Length	Height	Width	Hitch Weight	Axle Weight	UVW	CCC	Awning	Fresh Water	Gray Water	Black Water
8263MBR	29' 11"	11' 7"	8'	1022 lb	6574 lb	7655 lb	2210 lb	19'	54 gal	78 gal	39 gal
8265KBS	29' 11"	11' 7"	8'	1010 lb	6580 lb	7649 lb	2161 lb	22'	54 gal	78 gal	39 gal
8332SB	36' 8"	11' 7"	8'	1317 lb	8238 lb	9614 lb	1703 lb	10' & 16'	54 gal	122 gal	53 gal
8336BH	36' 8"	11' 7"	8'	1376 lb	8423 lb	9858 lb	1518 lb	11' & 10'	54 gal	131 gal	53 gal
8337RL	36' 8"	11' 7"	8'	1358 lb	8122 lb	9539 lb	1819 lb	10' & 15'	54 gal	122 gal	53 gal
8339FK	36' 10"	11' 7"	8'	1295 lb	8120 lb	9474 lb	1821 lb	17' & 11'	54 gal	131 gal	53 gal
8421DB	42'	12'	8' 4"	1385 lb	9815 lb	11259 lb	2126 lb	11', 12', 10'	54 gal	131 gal	106 gal

SUPERIOR CONSTRUCTION

- Complete Composite Wall Construction
- Fully Laminated Walkable Roof
- 6-Sided Full-Aluminum Frame
- 5/8" Tongue & Groove Plywood Floor
- Aluminum Floor Joists
- Aluminum Dinette, Bed, and Bunk
- Painted Fiberglass Front Cap with Clear Coat
- Automotive Glass Windshield (N/A 8332SB)

STANDARD FEATURES

- 200W Solar Panel with 1800W Inverter & 30 AMP Charge Controller
- Back-Up Camera Prep
- Maxxair 4-Speed Fan with Cover
- Winegard Air 360+ Prepped for Wi-Fi
- Frameless Windows
- Key-Alike Lock System w/Slam Latch Baggage Doors
- Additional Solar Prep
- PSX2 Power Stabilizers
- Double Battery Box
- Double 30 lb LP Tanks

SAFETY STANDARDS

- Dexter® Torflex® Axles
- Dexter® Tow Assist® ABS and Sway Mitigation System (8421DB: Curt® Slipper Roller Axles, ABS)
- Wheel-Banded Tire Pressure Monitoring System (TPMS)
- Goodyear Endurance Tires
- Nitrogen-Filled Tires with Balancing Beads
- MORryde Strut Assist Steps

CLIMATE PROTECTION PACKAGE

- 12V Thermostat-Controlled Heated Tanks and Dump Valves
- Radiant Foil in Underbelly, Front Caps, and Slides

OPTIONAL FEATURES (NOT PICTURED)

- Second 15K BTU A/C Standard on Units Over 30' (Optional on Units Under 30'; Third A/C Optional on Units Over 30'; 8421DB: Triple A/C Installed)
- 4.0 Auto-Leveling
- Washer/Dryer (Where Available)
- Slide Toppers
- Additional 200W Solar Panel

CAMPFIRE COMFORT PACKAGE

Clay Fiberglass Exterior, High Gloss Fiberglass Cap, Composite Structural Exterior Walls, Vacuum Laminated Roof, Aluminum Cage Construction, Front Windshield Where Available, Frameless Windows, Slam Latch Baggage Doors w/Magnetic Catch, Enclosed Underbelly w/Thermostatically Controlled Heated Holding Tanks, Prewire for Backup Camera, Power Awning w/Adjustable Rain Dump & LED Lighting, 200W Solar Panel w/Inverter & Additional Solar Side Port, Speaker w/Bluetooth® Connection, Outside Speaker, AIR 360+ Omnidirectional Antenna w/Wi-Fi Prep, OneControl® APP Monitor Panel, Smart TV, Bunkroom Smart Entertainment TV, 50AMP Service, 12V Refrigerator, Fireplace (Where Available), OTR Microwave, Residential Style Gas Range, 35K BTU Furnace (8421DB has additional 20BTU Furnace), Maxxair Power Fan w/Remote, 6 Gallon Quick Recovery Auto Ignite Gas/Electric Water Heater, Dexter® Torflex® Torsion Axles, Tow Assist® ABS & Sway Mitigation System (8421DB: Curt® Slipper Roller Axles, Anti-Lock Brake System), GOODYEAR Endurance Tires w/TPMS Tire Pressure Monitoring System, Roller Shades, MORryde Strut Assist Steps w/Solid Entry Rail, Key Alike Doors, Undermount Kitchen Sink w/High Rise Faucet, Solid Surface Kitchen & Lav Countertops, Soft Close Roller Bearing Drawers, Soft Close Hidden Cabinet Hinges, Rear Ladder, Black Tank Flush, Exterior Hot/Cold Water Port, Water-Pur Filtration System, Showermiser Water Saving System, Griddle Prep, 2" Accessory Hitch, Spare Tire, Power Tongue Jack, Lino Flooring in Slideout, Power Stabilizer Jacks

MODELS - 8332SB, 8336BH, 8337RL, 8339FK

Dual 15K BTU A/C Installed (8421DB: Triple A/C Installed)

MODELS - 8263MBR, 8265KBS

15K BTU AC w/Second A/C Prep, Power Stabilizer Jacks



SCAN TO LEARN RV
TERMINOLOGY OR VISIT:

FORESTRIVERINC.COM/RV-DEFINITIONS

FIFTH WHEELS

LUXURY ELEVATED, ADVENTURES GROUNDED



For those who demand the pinnacle of Rockwood's towable luxury, the Signature Fifth Wheel offers unparalleled space, stability, and refinement. Designed for long-term travel or seasonal living, it features residential appliances, deluxe furnishings, and abundant storage throughout. The Signature Fifth Wheel combines residential luxury with the strength and handling of a fifth-wheel design, delivering a true home away from home—wherever the road may lead.



**SCAN TO VIEW PRICING AND
MORE INFORMATION OR VISIT:**

FORESTRIVERINC.COM/RVS/ROCKWOOD-SIGNATURE-FIFTH-WHEELS





401SFB



R282RK



R371RK



R371RK

FIFTH WHEELS KEY FEATURES

- 6-Sided Aluminum Framing w/Aluminum Dinettes, Bed Bases & Composite Construction
- One Piece Vacuum Laminated Roof w/High Density Block Foam Insulation
- 5/8" Tongue & Groove Plywood Floors w/One Piece Seamless Linoleum Coverage
- Curt® Slipper Roller Axles w/ABS Brakes
- Goodyear Endurance Tires w/Balance Beads & Wheel-Banded Tire Pressure Monitoring System (TPMS)
- 3,000 lb Towing Capacity & Curt® Rota-Flex™ Pin Box
- Spray Foam Insulation in Front Cap

R281RK

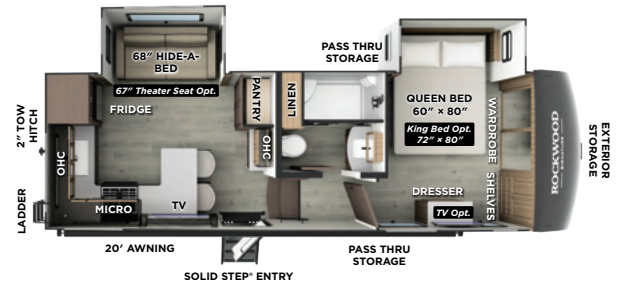


UVW: 8203 lb

CCC: 1633 lb

Hitch Weight: 1345 lb

Exterior Length: 28' 11"



R282RK

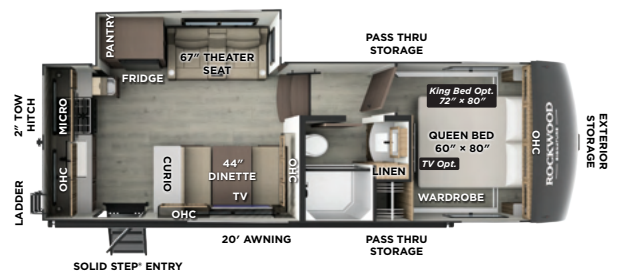


UVW: 7895 lb

CCC: 1988 lb

Hitch Weight: 1356 lb

Exterior Length: 28' 11"



290SFK NEW

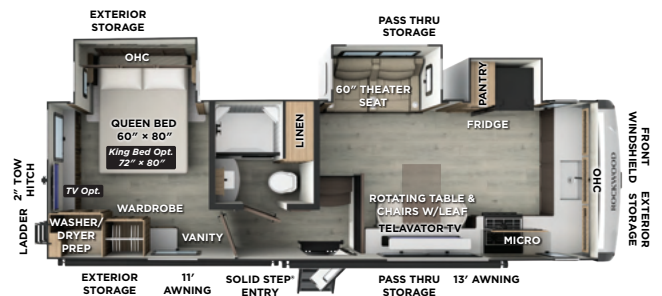


UVW: 8764 lb

CCC: 2134 lb

Hitch Weight: 1635 lb

Exterior Length: 30'



POWER PACKAGE



- Charge at Home from a 15A Receptacle w/ Combimaster Power Sharing Feature
- 460Ah Lithium-Ion Battery¹
- 50A DC/DC Charger
- 3500W Inverter/Charger w/ 200A Charge Capacity
- (6) 200W GoPower[®] Solar Panels
- Integrated 60A MPPT Charge Controller
- 5" Touchscreen monitor
- Centralized System Disconnect Switch
- 15,000 BTU A/C w/Soft Start Technology

¹ Optional second 460Ah battery available



Power Package Available

R301RKS

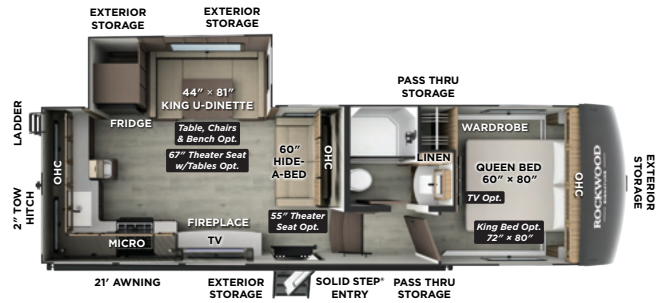


UVW: 8329 lb

CCC: 1669 lb

Hitch Weight: 1439 lb

Exterior Length: 31' 4"



R331RL

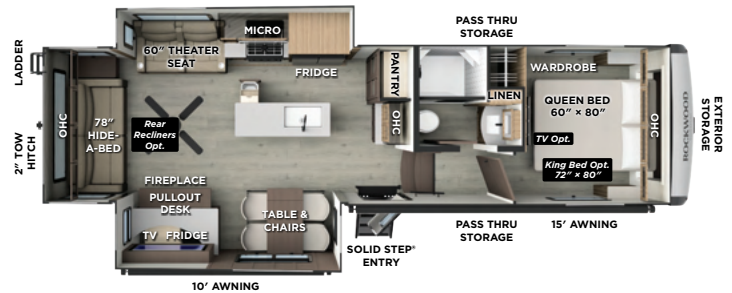


UVW: 9884 lb

CCC: 2233 lb

Hitch Weight: 1717 lb

Exterior Length: 34'



R361RLS

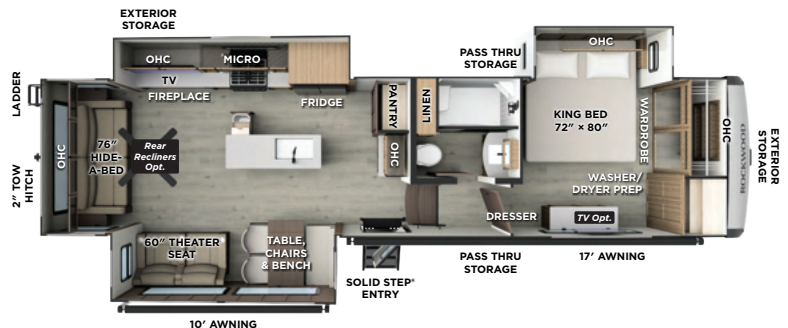


UVW: 10601 lb

CCC: 1730 lb

Hitch Weight: 1931 lb

Exterior Length: 36' 10"



R371RK

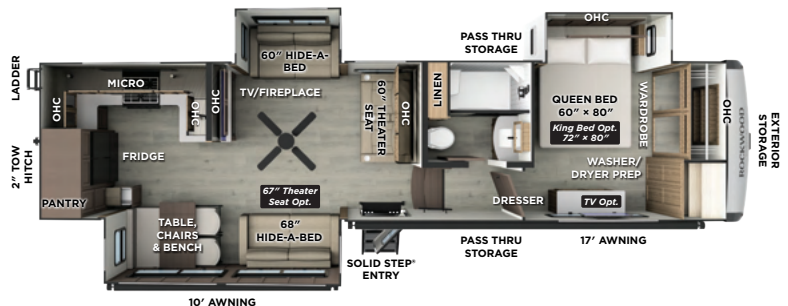


UVW: 10350 lb

CCC: 2051 lb

Hitch Weight: 2001 lb

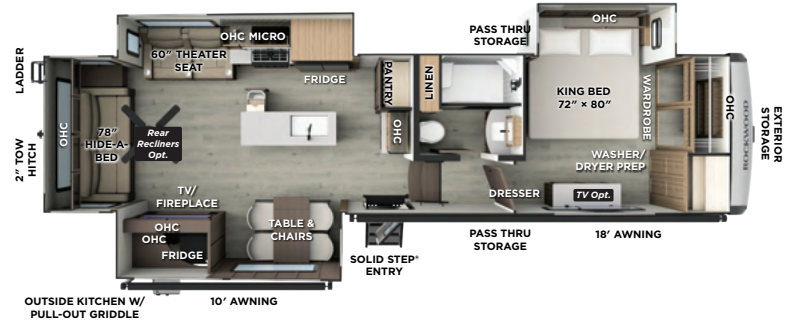
Exterior Length: 36' 10"



R372RL



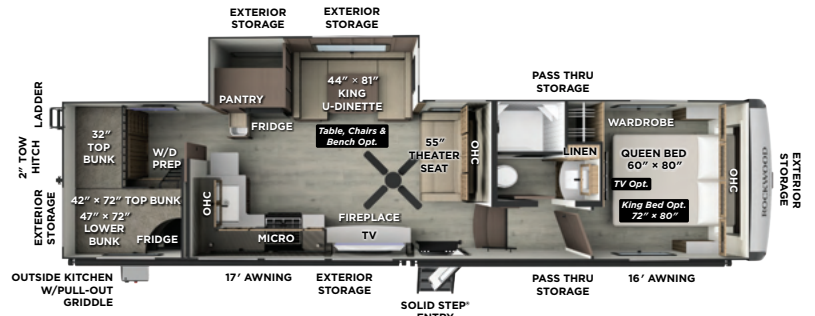
UVW: 10844 lb
CCC: 1461 lb
Hitch Weight: 1905 lb
Exterior Length: 36' 10"



R374DBH



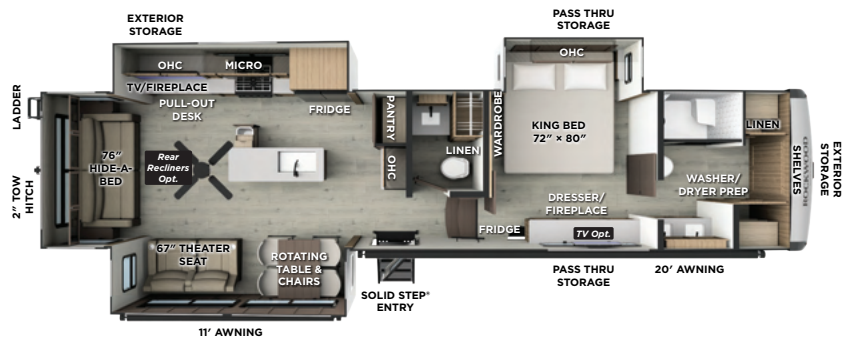
UVW: 9661 lb
CCC: 2084 lb
Hitch Weight: 1745 lb
Exterior Length: 36' 10"



401SFB NEW



UVW: 11460 lb
CCC: 2036 lb
Hitch Weight: 2097 lb
Exterior Length: 40'



402SFL NEW



UVW: 11989 lb
CCC: 2156 lb
Hitch Weight: 2145 lb
Exterior Length: 40'



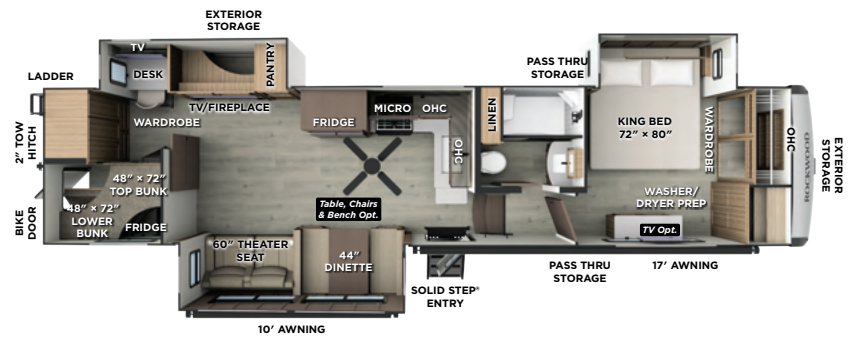
405SBH NEW

UVW: 10869 lb

CCC: 2628 lb

Hitch Weight: 2020 lb

Exterior Length: 40'



FIFTH WHEELS SPECIFICATIONS

Floorplan	Length	Height	Width	Hitch Weight	Axle Weight	UVW	CCC	Awning	Fresh Water	Gray Water	Black Water
R281RK	28' 11"	13' 2"	8'	1345 lb	6799 lb	8203 lb	1633 lb	20'	54 gal	78 gal	39 gal
R282RK	28' 11"	13' 2"	8'	1356 lb	6480 lb	7895 lb	1988 lb	20'	54 gal	78 gal	39 gal
290SFK	30'	13' 2"	8'	1635 lb	7070 lb	8764 lb	2134 lb	11' & 13'	54 gal	108 gal	39 gal
R301RKS	31' 4"	13' 2"	8'	1439 lb	6831 lb	8329 lb	1669 lb	21'	54 gal	78 gal	39 gal
R331RL	34'	13' 4"	8'	1717 lb	8108 lb	9884 lb	2233 lb	10' & 15'	54 gal	92 gal	53 gal
R361RLS	36' 10"	13' 4"	8'	1931 lb	8611 lb	10601 lb	1730 lb	10' & 17'	54 gal	92 gal	53 gal
R371RK	36' 10"	13' 4"	8'	2001 lb	8290 lb	10350 lb	2051 lb	11' & 17'	54 gal	92 gal	53 gal
R372RL	36' 10"	13' 4"	8'	1905 lb	8880 lb	10844 lb	1461 lb	10' & 18'	54 gal	83 gal	53 gal
R374DBH	36' 10"	13' 4"	8'	1745 lb	7857 lb	9661 lb	2084 lb	16' & 17'	54 gal	92 gal	53 gal
401SFB	40'	13' 4"	8'	2097 lb	9322 lb	11460 lb	2036 lb	11' & 20'	54 gal	92 gal	83 gal
402SFL	40'	13' 4"	8'	2145 lb	9785 lb	11989 lb	2156 lb	9' & 16'	54 gal	131 gal	53 gal
405SBH	40'	13' 4"	8'	2020 lb	8790 lb	10869 lb	2628 lb	10' & 17'	54 gal	92 gal	53 gal

SUPERIOR CONSTRUCTION

- Complete Composite Wall Construction
- Fully Laminated Walkable Roof
- 5/8" Tongue & Groove Plywood Floor
- Aluminum Floor Joists
- 6-Sided Full-Aluminum Frame
- Aluminum Dinette, Bed, and Bunk
- Painted Fiberglass Front Cap with Clear Coat

STANDARD FEATURES

- Back-Up Camera Prep
- 200W Solar Panel with 30 AMP Charge Controller
- Maxxair 4-Speed Fan w/Cover and Remote
- Winegard Air 360+ Prepped for Wi-Fi
- Frameless Windows
- Double 30 lb LP Tanks
- Additional Solar Prep
- Auto-Leveling
- Curt® Rota-Flex Pin Box
- Key-Alike Lock System w/Slam Latch Baggage Doors

SAFETY STANDARDS

- Wheel-Banded Tire Pressure Monitoring System (TPMS)
- ABS Brakes
- MORryde Strut Assist Steps
- 16" Nitrogen-Filled Goodyear Endurance Tires with Balancing Beads

CLIMATE PROTECTION PACKAGE

- Radiant Foil In Underbelly & Slides
- Spray Foam Insulation in Front Cap
- 12V Thermostat-Controlled Heated Tanks and Dump Valves

OPTIONAL FEATURES (NOT PICTURED)

- Additional 200W Solar Panel
- 2nd or 3rd A/C (Where Applicable; 2nd A/C Optional on 281RK, 282RK, and 301RKS)
- Slide Toppers
- Power Package
 - 6 - 200W Solar Panels
 - 3500W Inverter
 - 460Ah Lithium Battery

MILLERSBURG ELITE PACKAGE

Clay Fiberglass Exterior, High Gloss Fiberglass Insulated Cap, Composite Structural Exterior Walls, Vacuum Laminated Roof, Aluminum Cage Construction, Frameless Windows, Power Awning w/Adjustable Rain Dump and LED Light Strip, Slam Latch Baggage Doors w/Magnetic Catch, Enclosed Underbelly w/Thermostatically Controlled Heated Holding Tanks, Prewire for Backup Camera, 200W Solar Panel w/Additional Solar Side Port, Speaker w/Bluetooth® Connection, Outside Speakers, AIR 360+ Omnidirectional Antenna w/Wi-Fi Prep, Smart TV, Bunkroom Smart Entertainment TV, 50AMP Service, 12V Refrigerator, Fireplace (Where Available), OTR Microwave, Residential Style Gas Range, 35K BTU Furnace, 12 Gallon Quick Recovery Auto Ignite Gas/Electric Water Heater, 2" Towing Hitch, Curt® Rota-Flex™ Pinbox, Curt® Slipper Roller Axles, Anti-Lock Brake System, GOODYEAR Endurance Tires w/TPMS Tire Pressure Monitoring System, Roller Shades, MORryde Strut Assist Steps w/Solid Entry Step Rail, Key Alike Doors, Under-mount Kitchen Sink w/High Rise Faucet, Solid Surface Kitchen & Lav Countertops, Exterior Hot/Cold Water Port, Water-Pur Filtration System, Exterior Nautilus Water Management System w/Spray Hose, Soft Close Roller Bearing Drawers, Soft Close Hidden Cabinet Hinges, Rear Ladder, Black Tank Flush, Auto Leveling System, Lino Flooring in Slideout

MODELS - R331RL, R361RLS, R371RK, R372RL, R374DBH, 401SFB, 402SFL, 405SBH

Dual 15K BTU A/C Installed, 1 PC Fiberglass Shower

MODELS - R281RK, R282RK, R301RKS

15K BTU A/C w/Second A/C Prep,

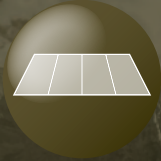


**SCAN TO LEARN RV
TERMINOLOGY OR VISIT:**

FORESTRIVERINC.COM/RV-DEFINITIONS

THE ROCKWOOD PROMISE

Rockwood stands behind its craftsmanship with unwavering commitment from start to finish. When you choose Rockwood, you're choosing an RV backed by our comprehensive limited warranties. For complete details, please consult the written warranty or your Rockwood dealer.



LIMITED LIFETIME ROOFING WARRANTY*

**Lifetime Warranty Limited to
Original Owner*



TWO YEAR FIBERGLASS WARRANTY



TEN YEAR TORFLEX® AXLE WARRANTY

**Travel Trailers Only*



ONE YEAR BUMPER TO BUMPER WARRANTY

MILLERSBURG MADE

The story of Rockwood is deeply intertwined with the town of Millersburg, Indiana. Here, generations of families have contributed to the creation of RVs known for their reliability and lasting value. "Millersburg Made" signifies a commitment to community and a dedication to building RVs you can trust. It's the assurance that your Rockwood has been built with care, by people who take pride in their work and stand behind every RV that leaves our doors.

EACH NEW FOREST RIVER PURCHASE PROVIDES:

- ✓ Pre-delivery Inspection. ✓ Digital Owner's Manual.
- ✓ Free Membership to Forest River Owners Group (FROG).
Learn more at www.forestriverfrog.com.
- ✓ A Contribution to Care Camps Foundation www.carecamps.org.
- ✓ 1 Year Free Roadside Assistance from Date of Purchase.



LEARN MORE:

Scan this QR code with your mobile device to learn more about Forest River.



SPECIFICATION DEFINITIONS:

Scan this barcode using a QR reader on your smartphone to learn RV terminology and more!



YOUR **ROCKWOOD** DEALER

All information contained in this brochure is believed to be accurate at the time of publication. However, during any model year, it may be necessary to make changes to the manufacturing process of the units and information in this brochure. Your unit may differ from the information in this brochure due to any changes in the manufacturing process and equipment. Forest River, Inc., reserves the right to make all such changes without notice, including prices, colors, combinations, materials, equipment and specifications of any model as well as the addition of new models and the discontinuance of models shown in this brochure. Therefore, please consult with your Forest River dealer and confirm the availability of any materials, combinations, designs, or specifications that are meaningful to your purchase decision. © 2025 Rockwood RV, a Division of Forest River, Inc., a Berkshire Hathaway Company. All Rights Reserved. Forest River, Inc. 09/25