

ROCKWOOD

TRAVEL TRAILERS



GEO PRO | MINI LITE | ROO | ULTRA LITE



FOREST RIVER

FORESTRIVERINC.COM



FOREST RIVER

A Berkshire Hathaway Company

BUILT AND BACKED BY FOREST RIVER

Founded in 1996 by Pete Liegl, Forest River, Inc. has evolved into North America's largest manufacturer of recreational vehicles, cargo trailers, pontoon boats, and commercial vehicles including buses, vans, and trucks. Its portfolio includes market share leaders in every category, and it is the country's leading manufacturer of buses and vans for both the private and public sectors. Based in Elkhart, Indiana, Forest River employs 14,000+ employees in 100+ facilities in more than a half dozen states. With a commitment to excellence and a focus on customer satisfaction, Forest River is proud to be a Berkshire Hathaway company.

NEVER STOP GOING.™

FORESTRIVERINC.COM



ROCKWOOD

MILLERSBURG
MADE

The story of Rockwood is deeply intertwined with the town of Millersburg, Indiana. Here, generations of families have contributed to the creation of RVs known for their reliability and lasting value. “Millersburg Made” signifies a commitment to community and a dedication to building RVs you can trust. It’s the assurance that your Rockwood has been built with care, by people who take pride in their work and stand behind every RV that leaves our doors.

CONTENTS

GEO PRO.....	4
MINI LITE.....	11
ROO.....	18
ULTRA LITE	22

GEO PRO

GO FURTHER, STAY LIGHTER



Built for the modern explorer, the Rockwood Geo Pro travel trailer is the go-to choice for off-grid adventurers and eco-conscious travelers alike. Lightweight and compact, yet packed with innovative technology and smart storage solutions, Geo Pro models are designed for efficiency without sacrificing comfort. From rugged tires and standard solar (N/A LE Models) to versatile interiors that adapt to your journey, this travel trailer is ready to follow wherever your sense of adventure leads.



**SCAN TO VIEW PRICING AND
MORE INFORMATION OR VISIT:**

[FORESTRIVERINC.COM/RVS/
ROCKWOOD-GEO-PRO](https://FORESTRIVERINC.COM/RVS/ROCKWOOD-GEO-PRO)





POWER PACKAGE



- 15A Receptacle Charging with Combimaster Power Sharing Feature
- 3000W Inverter/Charger with 160A Charging Capacity
- 11,000 BTU Soft Start Power Saver A/C
- Two Mastervolt Smart Remotes
- 50A DC/DC Charger
- 30A Charge Controller
- 460Ah Mastervolt Lithium Battery
- (3) 200W GoPower® Solar Panels
- Centralized System Disconnect Switch

Available in Select Geo Pro Models Only

GEO PRO KEY FEATURES

- 6-Sided Aluminum Framing w/Aluminum Dinettes, Bed Bases & Composite Construction (5-Sided 11LE)
- One Piece Vacuum Laminated Roof w/High Density Block Foam Insulation
- 5/8" Tongue & Groove Plywood Floors (N/A 11LE, 13LE) w/One Piece Seamless Linoleum Coverage
- Dexter® Torflex® Axles
(LE Models: Dexter® Leaf-Spring Axles w/E-Z Lube®)
- Balance Beads & Wheel-Banded Tire Pressure Monitoring System (TPMS) (N/A LE Models)
- Power Pro™ Voice Activated Control Panel (N/A LE Models)
- MORryde Solid Steps & Extended Entry Door Grab Handle (Grab Handle N/A LE Models)

NEW LE LINE

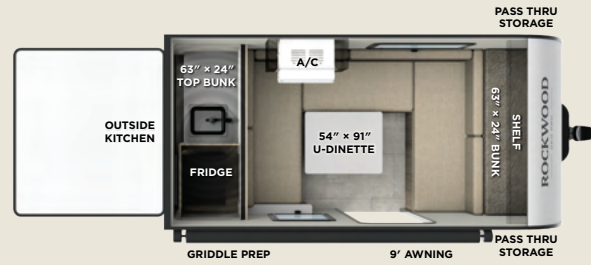
G11LE NEW

UVW: 1738 lb

CCC: 957 lb

Hitch Weight: 203 lb

Exterior Length: 14' 11"



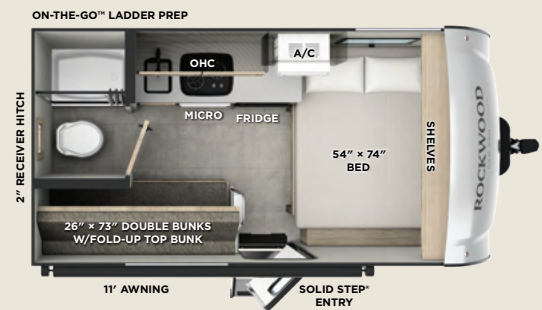
G13LE NEW

UVW: 2296 lb

CCC: 1488 lb

Hitch Weight: 284 lb

Exterior Length: 16'



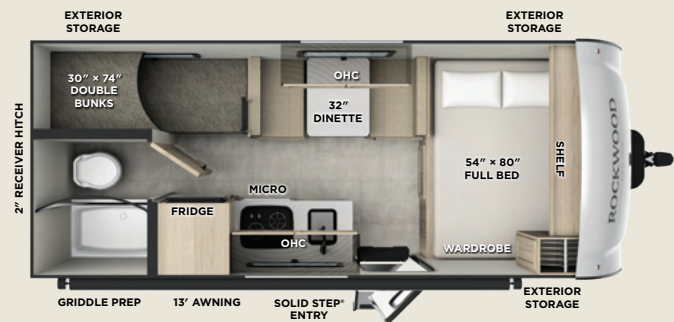
G17LE NEW

UVW: 2634 lb

CCC: 1152 lb

Hitch Weight: 286 lb

Exterior Length: 20' 2"



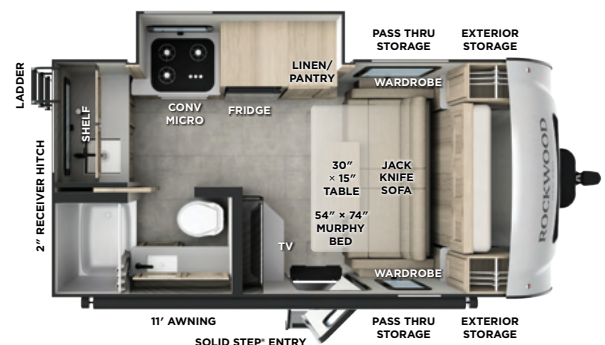
G15FBS

UVW: 3452 lb

CCC: 971 lb

Hitch Weight: 423 lb

Exterior Length: 17' 5"



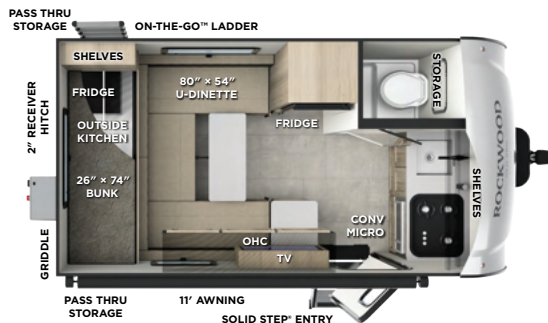
G15RDG

UVW: 2883 lb

CCC: 1442 lb

Hitch Weight: 325 lb

Exterior Length: 16' 2"



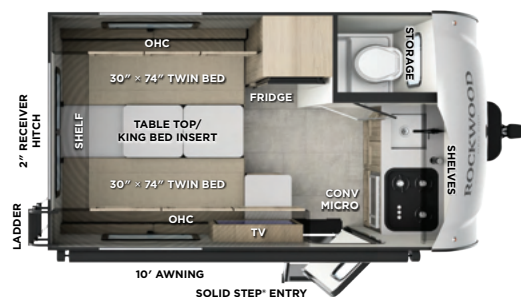
G15TB

UVW: 2846 lb

CCC: 1061 lb

Hitch Weight: 407 lb

Exterior Length: 15' 8"



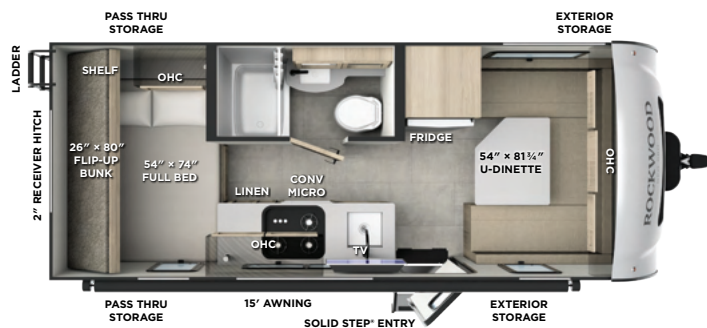
G19DBH

UVW: 3496 lb

CCC: 986 lb

Hitch Weight: 482 lb

Exterior Length: 20' 8"



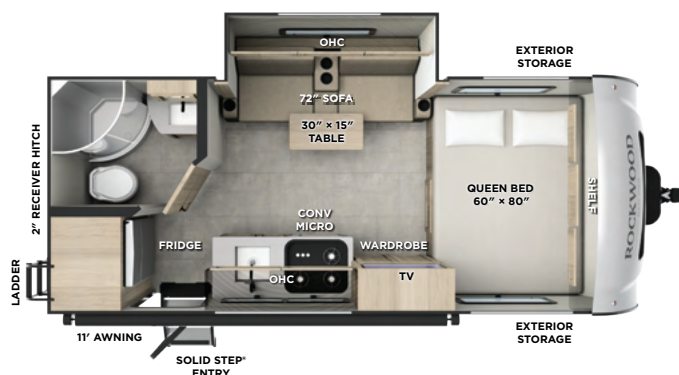
G19FBS

UVW: 3590 lb

CCC: 850 lb

Hitch Weight: 440 lb

Exterior Length: 20' 2"



G19FD

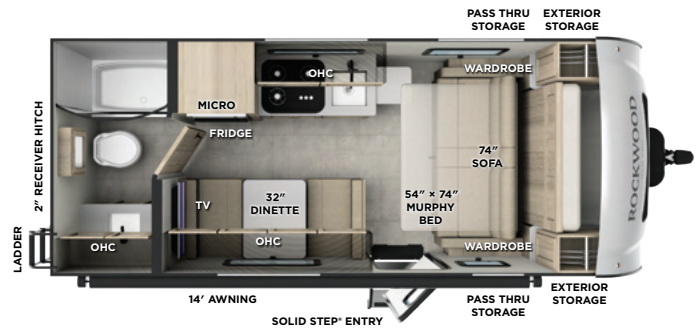


UVW: 3511 lb

CCC: 924 lb

Hitch Weight: 435 lb

Exterior Length: 20' 2"



G19FDS

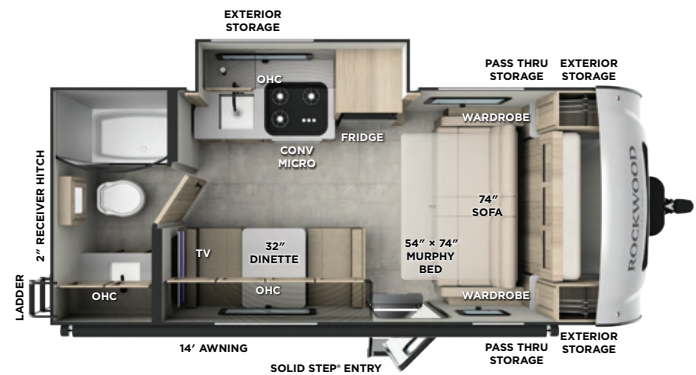


UVW: 3602 lb

CCC: 898 lb

Hitch Weight: 500 lb

Exterior Length: 20' 2"



G19RL

UVW: 3814 lb

CCC: 1183 lb

Hitch Weight: 407 lb

Exterior Length: 20' 8"



G20BH

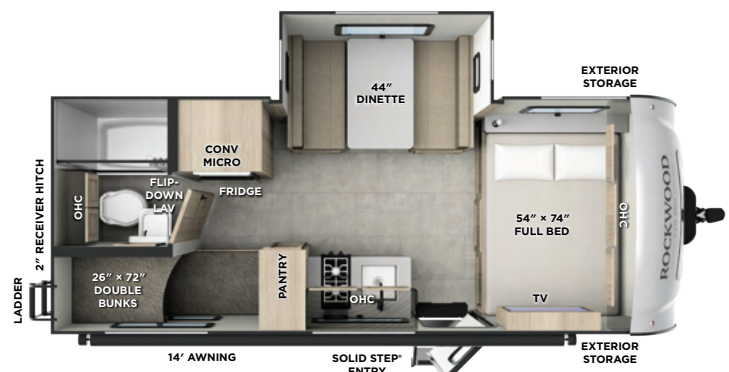


UVW: 3843 lb

CCC: 1155 lb

Hitch Weight: 501 lb

Exterior Length: 21' 2"



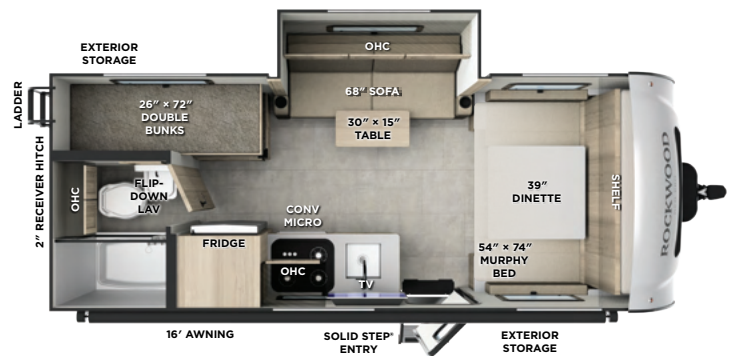
G20BHT

UVW: 3953 lb

CCC: 1542 lb

Hitch Weight: 455 lb

Exterior Length: 21' 2"



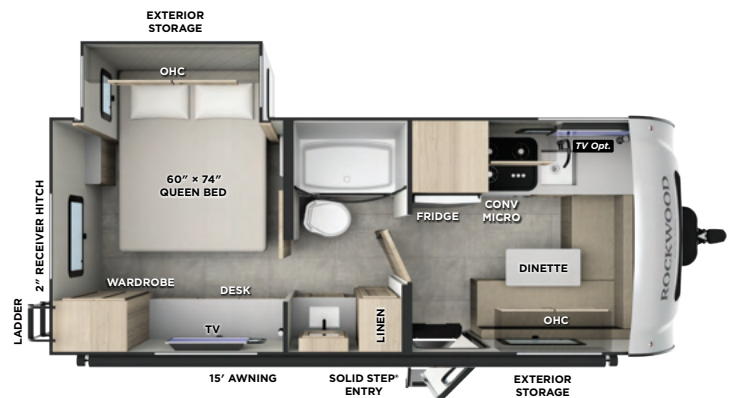
G20BS NEW

UVW: 3838 lb

CCC: 1159 lb

Hitch Weight: 535 lb

Exterior Length: 21' 2"



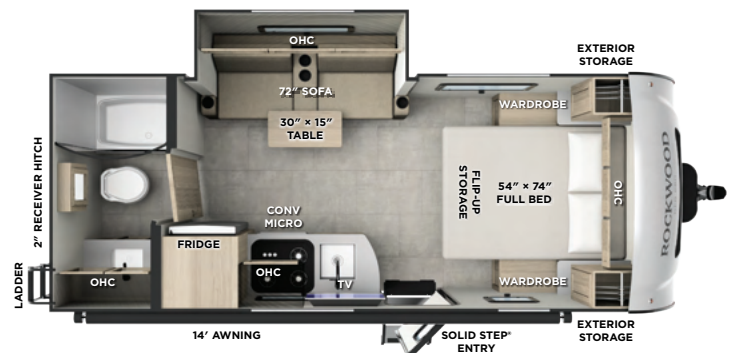
G20FBS

UVW: 3669 lb

CCC: 752 lb

Hitch Weight: 421 lb

Exterior Length: 21' 2"



G20FK

UVW: 4217 lb

CCC: 1278 lb

Hitch Weight: 619 lb

Exterior Length: 21' 2"



GEO PRO SPECIFICATIONS

Floorplan	Length	Height	Width	Hitch Weight	Axle Weight	UVW	CCC	Awning	Fresh Water	Gray Water	Black Water
G11LE	14' 11"	8' 7"	7' 4"	203 lb	1497 lb	1738 lb	957 lb	9'	18 gal	6 gal	N/A
G13LE	16'	9' 2"	7'	284 lb	1974 lb	2296 lb	1488 lb	11'	31 gal	27 gal	27 gal
G15FBS	17' 5"	10' 1"	7' 8"	423 lb	2991 lb	3452 lb	971 lb	11'	31 gal	27 gal	27 gal
G15RDG	16' 2"	10' 1"	7' 8"	325 lb	2520 lb	2883 lb	1442 lb	11'	31 gal	15 gal	12 gal
G15TB	15' 8"	10' 1"	7' 8"	407 lb	2401 lb	2846 lb	1061 lb	10'	31 gal	15 gal	12 gal
G17LE	20' 2"	10'	7'	286 lb	2310 lb	2634 lb	1152 lb	13'	31 gal	27 gal	27 gal
G19DBH	20' 8"	10' 2"	7' 8"	482 lb	2976 lb	3496 lb	986 lb	15'	31 gal	27 gal	27 gal
G19FBS	20' 2"	10' 1"	7' 8"	440 lb	3112 lb	3590 lb	850 lb	11'	31 gal	27 gal	27 gal
G19FD	20' 2"	10' 1"	7' 8"	435 lb	3038 lb	3511 lb	924 lb	14'	31 gal	27 gal	27 gal
G19FDS	20' 2"	10' 1"	7' 8"	500 lb	3064 lb	3602 lb	898 lb	14'	31 gal	27 gal	27 gal
G19RL	20' 8"	10' 1"	7' 8"	407 lb	3369 lb	3814 lb	1183 lb	14'	31 gal	27 gal	27 gal
G20BH	21' 2"	10' 4"	7' 8"	501 lb	3304 lb	3843 lb	1155 lb	14'	31 gal	27 gal	27 gal
G20BHT	21' 2"	10' 1"	7' 8"	455 lb	3460 lb	3953 lb	1542 lb	16'	31 gal	27 gal	27 gal
G20BS	21' 2"	10' 1"	7' 8"	535 lb	3265 lb	3838 lb	1159 lb	15'	31 gal	27 gal	27 gal
G20FBS	21' 2"	10' 1"	7' 8"	421 lb	3238 lb	3669 lb	752 lb	14'	31 gal	27 gal	27 gal
G20FK	21' 2"	10' 1"	7' 8"	619 lb	3560 lb	4217 lb	1278 lb	15'	31 gal	42 gal	27 gal

SUPERIOR CONSTRUCTION

- Complete Composite Wall Construction
- 5/8" Tongue & Groove Plywood Floor
- Fully Laminated Walkable Roof
- 6-Sided Full-Aluminum Frame

STANDARD FEATURES

- Key-Alike Lock System w/Slam Latch Baggage Doors
- Back-Up Camera Prep
- 200W Solar Panel with 1800W Inverter & 30 AMP Charge Controller
- Maxxair 4-Speed Fan with Cover
- Winegard Air 360+ Prepped for Wi-Fi

SAFETY STANDARDS

- MORryde Solid, Supported Steps
- Dexter® Torflex® Axles
- Nitrogen-Filled Tires w/Balancing Beads

CLIMATE PROTECTION PACKAGE

- 12V Thermostat-Controlled Heated Tanks and Dump Valves
- Radiant Foil in Front Cap

OPTIONAL FEATURES (NOT PICTURED)

- Additional 200W Solar Panel
- Slide Topper
- ProRac Roof Mounting Bars (N/A with Power Package or 2nd Solar Panel)
- Tongue Mount Bike Rack
- Power Package (*Select Models*)
- 3 - 200W Solar Panels
- 460Ah Lithium Battery
- 3000W Inverter

N/A LE MODELS

- Aluminum Floor Joists
- Aluminum Dinette, Bed, and Bunk
- Aluminum Truss Roof Bracing
- Fiberglass Front Cap
- Automotive Glass Windshield (*Where Available*)

- Performance Tires w/Lifted Suspension
- Frameless Windows
- Additional Solar Prep
- Double Battery Box
- Double 20 lb LP Tanks
- Power Pro™ Voice Activated Control Panel

- Wheel-Banded Tire Pressure Monitoring System (*TPMS*)

SUPERIOR CONSTRUCTION

- Complete Composite Wall Construction
- 5/8" Tongue & Groove Flooring (*17LE*) *One-Piece Seamless Flooring (11LE, 13LE)*
- Fully Laminated Walkable Roof

STANDARD FEATURES

- Key-Alike Lock System w/Slam Latch Baggage Doors
- Back-Up Camera Prep
- Power Vent Fan
- Framed Windows
- Solar Prep
- Single Battery Box
- 20 lb LP Tank

SAFETY STANDARDS

- MORryde Solid, Supported Steps

LE MODELS ONLY

- 6-Sided Full-Aluminum Frame (*5-Sided 11LE*)
- Aluminum Floor Joists (*N/A 11LE*)
- Aluminum Dinette, Bed, and Bunk
- Aluminum Truss Roof Bracing
- Fiberglass Front Cap (*N/A 11LE*)

- 8K BTU Window A/C (*10K Roof Mount on 17LE*)
- 6 Gallon Water Heater (*N/A 11LE*)
- 6" Mattress (*N/A 11LE*)
- 3" Bunk Mat
- 2-Burner LP Stove (*Outside Griddle on 11LE*)

- Dexter® Leaf-Spring Axles w/E-Z Lube®

SUNSET SEEKER PACKAGE

2 Tone Fiberglass Exterior, High Gloss Fiberglass Cap, Composite Structural Exterior Walls, Vacuum Laminated Roof, Aluminum Cage Construction, Frameless Windows, Front Windshield (Where Available), Prewire for Backup Camera, Heated Holding Tanks, 200W Solar Panel w/ Inverter & Additional Solar Side Port, AIR 360+ Omnidirectional Antenna w/Wi-Fi Prep, Power Pro App Monitor Panel, 12V Entertainment Smart TV w/Stereo, 12V Refrigerator, Microwave Oven (Convection STD without Oven), Recessed 3- Burner Cooktop with Glass Cover (Gas Oven 20FK), Auto Ignite Gas/Electric Waterheater, 20,000 BTU Furnace, 13,500 BTU A/C (20BS: Two 10K BTU A/Cs), Dexter® Torflex® Torsion Axles, Sport Tires & Wheels w/TPMS Tire Pressure Monitoring System, Roller Shades, Key Alike Doors, Soft Close Roller Bearing Drawers, Hidden Cabinet Hinges, Exterior Ladder, Black Tank Flush (NA 15TB, 15RDG), Shower Miser, Exterior Hot/Cold Water Port, Outside Speaker, 2" Accessory Hitch, Gas Griddle Prep, Spare Tire, Power Tongue Jack, TRUSS Stabilizer Jacks, Power Awning

N/A LE MODELS

RIVER TO FOREST PACKAGE

2 Tone Fiberglass Exterior, High Gloss Fiberglass Cap (N/A 11LE), Composite Structural Exterior Walls, Vacuum Laminated Roof, Aluminum Cage Construction, Framed Windows, Power Awning, Solar Side Port, Refrigerator, Microwave Oven, 6-Gal Water Heater (N/A 11LE), 20,000 BTU Furnace, Wall Mount A/C (17LE: 10K Roof Mount A/C), Dexter® Leaf-Spring Axles, Roller Shades, Stabilizer Jacks, Recessed 2- Burner Cooktop with Glass Cover, 2" Accessory Hitch (11LE 1-1/4" Hitch), Soft Close Roller Bearing Drawers

LE MODELS ONLY



**SCAN TO LEARN RV
TERMINOLOGY OR VISIT:**

FORESTRIVERINC.COM/RV-DEFINITIONS

MINI LITE

COMPACT COMFORT, BOUNDLESS ADVENTURES



The Rockwood Mini Lite travel trailer is designed for adventurers seeking a lightweight yet feature-rich camping experience. Offering a variety of floorplans, the Mini Lite balances comfortable interiors with easy towing, making it ideal for those with SUVs or smaller trucks. Expect well-equipped kitchens, cozy sleeping areas, and thoughtful amenities, all within a durable and stylish build that allows you to explore with confidence.



**SCAN TO VIEW PRICING AND
MORE INFORMATION OR VISIT:**

FORESTRIVERINC.COM/RVS/
ROCKWOOD-MINI-LITE



2523MBR



2511S



2515S



2520BH

MINI LITE KEY FEATURES

- 6-Sided Aluminum Framing w/Aluminum Dinettes, Bed Bases & Composite Construction
- One Piece Vacuum Laminated Roof w/High Density Block Foam Insulation
- 5/8" Tongue & Groove Plywood Floors w/One Piece Seamless Linoleum Coverage
- Dexter® Torflex® Axles
- Goodyear Endurance Tires
- Balance Beads & Wheel-Banded Tire Pressure Monitoring System (TPMS)
- MORryde Strut Assist Steps (N/A 2109S) & Extended Entry Door Grab Handle

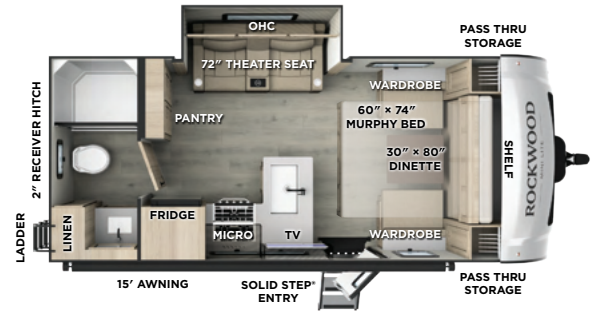
2108RB NEW

UVW: 4759 lb

CCC: 1630 lb

Hitch Weight: 680 lb

Exterior Length: 22' 4"



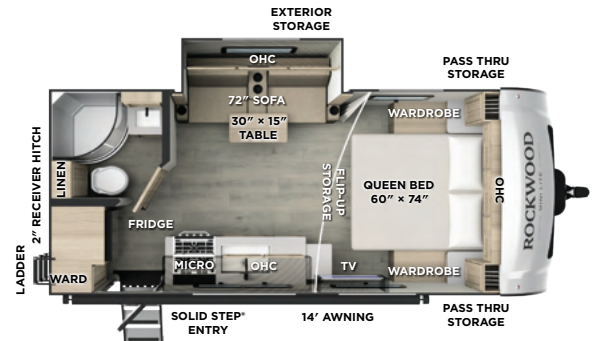
2109S

UVW: 4493 lb

CCC: 1344 lb

Hitch Weight: 557 lb

Exterior Length: 22' 4"



2205S

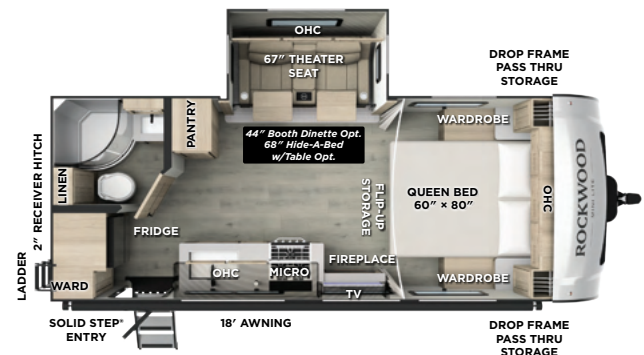


UVW: 5132 lb

CCC: 1662 lb

Hitch Weight: 634 lb

Exterior Length: 23' 10"



POWER PACKAGE



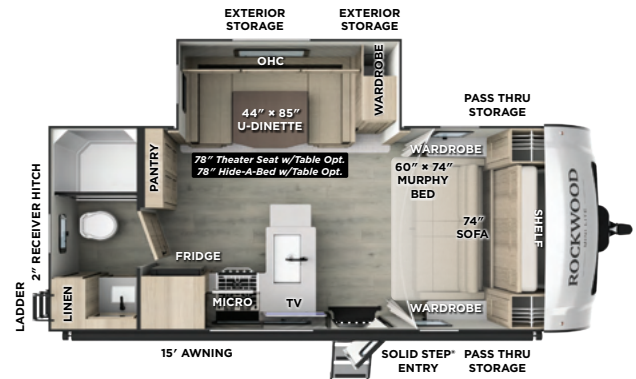
- 15A Receptacle Charging with Combimaster Power Sharing Feature
- 3000W Inverter/Charger with 160A Charging Capacity
- 13,500 BTU Soft Start Power Saver A/C
- 5" Touchscreen Monitor
- 50A DC/DC Charger
- 460Ah Mastervolt Lithium Battery
- Integrated 60A MPPT Charge Controller
- (5) 200W GoPower® Solar Panels
- Centralized System Disconnect Switch

Available in Select Mini Lite Models Only

2214S

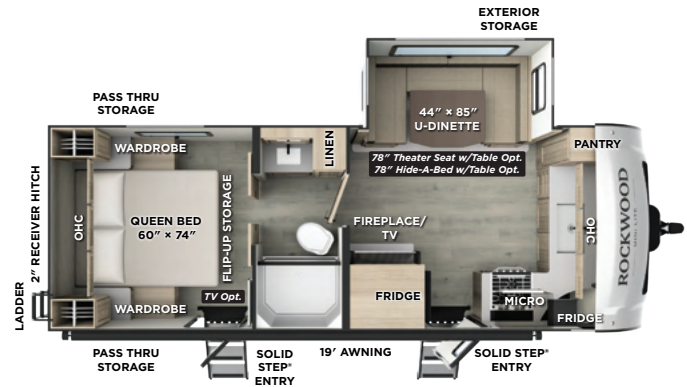


UVW: 5275 lb
CCC: 1550 lb
Hitch Weight: 748 lb
Exterior Length: 23' 10"



2506FK

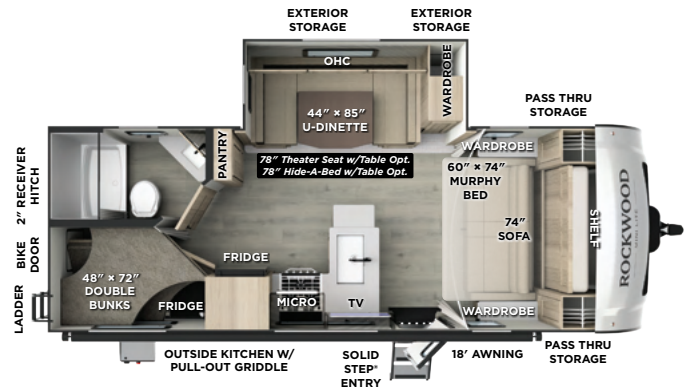
UVW: 5689 lb
CCC: 2131 lb
Hitch Weight: 820 lb
Exterior Length: 25' 11"



2509S



UVW: 5499 lb
CCC: 1434 lb
Hitch Weight: 773 lb
Exterior Length: 25' 11"



2511S

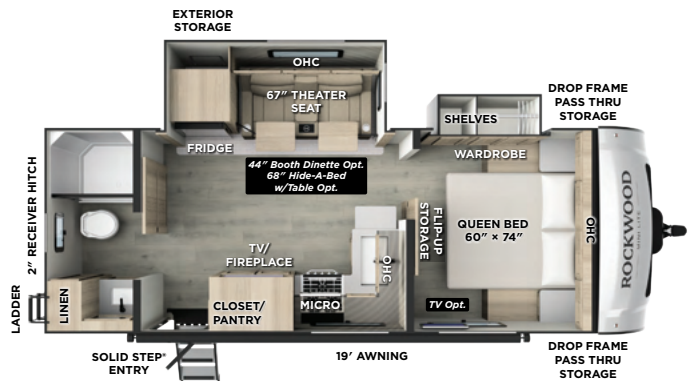


UVW: 5756 lb

CCC: 1941 lb

Hitch Weight: 697 lb

Exterior Length: 25' 10"



2513S

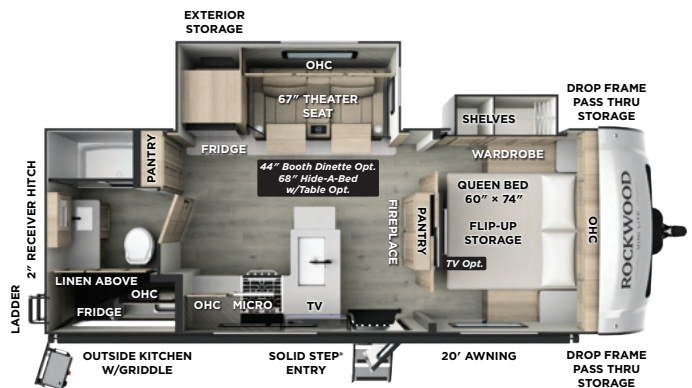


UVW: 5971 lb

CCC: 1689 lb

Hitch Weight: 660 lb

Exterior Length: 25' 10"



2515S

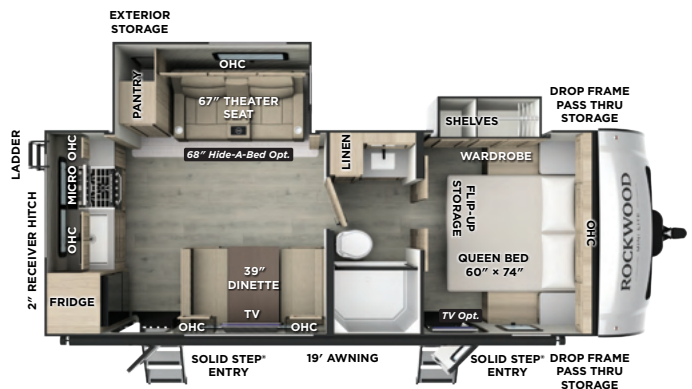


UVW: 5852 lb

CCC: 1829 lb

Hitch Weight: 681 lb

Exterior Length: 25' 10"



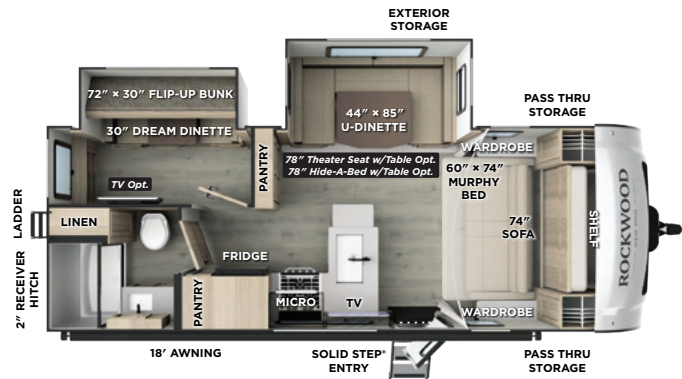
Power Package Available

MINI LITE | 15

2519S

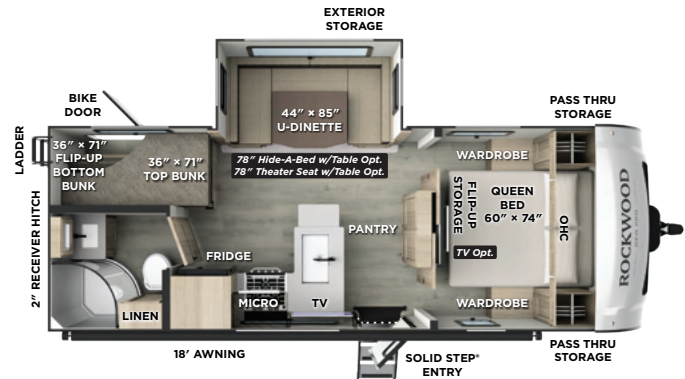


UVW: 6009 lb
CCC: 1651 lb
Hitch Weight: 660 lb
Exterior Length: 25' 10"



2520BH

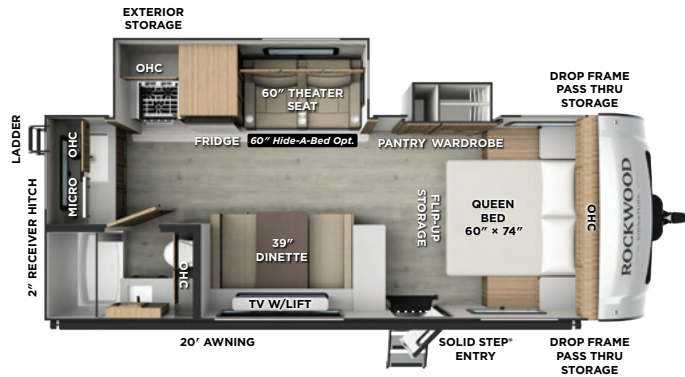
UVW: 5594 lb
CCC: 1986 lb
Hitch Weight: 580 lb
Exterior Length: 25' 10"



2522FB NEW

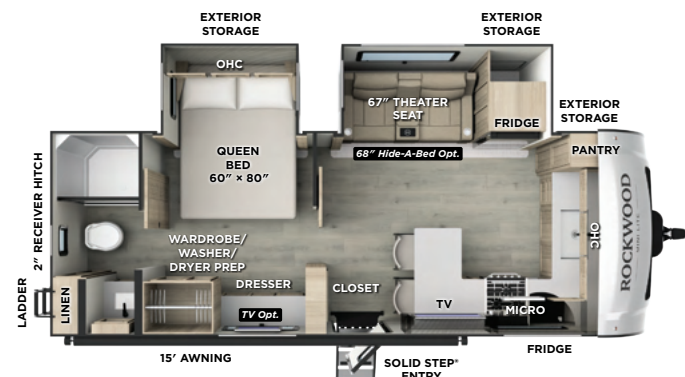


UVW: 5794 lb
CCC: 1891 lb
Hitch Weight: 685 lb
Exterior Length: 25' 9"



2523MBR NEW

UVW: 6313 lb
CCC: 1397 lb
Hitch Weight: 710 lb
Exterior Length: 25' 10"



MINI LITE SPECIFICATIONS

Floorplan	Length	Height	Width	Hitch Weight	Axle Weight	UVW	CCC	Awning	Fresh Water	Gray Water	Black Water
2108RB	22' 4"	10' 3"	8'	680 lb	4020 lb	4759 lb	1630 lb	15'	54 gal	29 gal	29 gal
2109S	22' 4"	10' 3"	8'	557 lb	3877 lb	4493 lb	1344 lb	14'	54 gal	29 gal	29 gal
2205S	23' 10"	10' 11"	8'	634 lb	4439 lb	5132 lb	1662 lb	18'	54 gal	29 gal	29 gal
2214S	23' 10"	10' 11"	8'	748 lb	4468 lb	5275 lb	1550 lb	15'	54 gal	29 gal	29 gal
2506FK	25' 11"	10' 11"	8'	820 lb	4810 lb	5689 lb	2131 lb	19'	54 gal	58 gal	29 gal
2509S	25' 11"	10' 11"	8'	773 lb	4667 lb	5499 lb	1434 lb	18'	54 gal	29 gal	29 gal
2511S	25' 10"	10' 11"	8'	697 lb	5000 lb	5756 lb	1941 lb	19'	54 gal	58 gal	29 gal
2513S	25' 10"	10' 11"	8'	660 lb	5252 lb	5971 lb	1689 lb	20'	54 gal	29 gal	29 gal
2515S	25' 10"	10' 11"	8'	681 lb	5112 lb	5852 lb	1829 lb	19'	54 gal	58 gal	29 gal
2519S	25' 10"	10' 11"	8'	660 lb	5290 lb	6009 lb	1651 lb	18'	54 gal	29 gal	29 gal
2520BH	25' 10"	10' 11"	8'	580 lb	4955 lb	5594 lb	1986 lb	18'	54 gal	29 gal	29 gal
2522FB	25' 9"	10' 11"	8'	685 lb	5050 lb	5794 lb	1891 lb	20'	54 gal	29 gal	29 gal
2523MBR	25' 10"	10' 11"	8'	710 lb	5565 lb	6313 lb	1397 lb	15'	54 gal	58 gal	29 gal

SUPERIOR CONSTRUCTION

- Complete Composite Wall Construction
- 5/8" Tongue & Groove Plywood Floor
- Fully Laminated Walkable Roof
- 6-Sided Full-Aluminum Frame
- Aluminum Floor Joists
- Aluminum Dinette, Bed, and Bunk
- Fiberglass Front Cap
- Automotive Glass Windshield

STANDARD FEATURES

- Key-Alike Lock System
- 200W Solar Panel with 1800W Inverter & 30 AMP Charge Controller
- Back-Up Camera Prep
- Maxxair 4-Speed Fan w/Cover
- Frameless Windows
- Winegard Air 360+ Prepped for Wi-Fi
- Slam Latch Baggage Doors
- Additional Solar Prep
- Double Battery Box
- Double 30 lb LP Tanks
- Solid Surface Countertops

SAFETY STANDARDS

- MORryde Strut Assist Steps (N/A 2109S)
- Wheel-Banded Tire Pressure Monitoring System (TPMS)
- Dexter® Torflex® Axles
- Nitrogen-Filled Goodyear Endurance Tires w/Balancing Beads

CLIMATE PROTECTION PACKAGE

- 12V Thermostat-Controlled Heated Tanks and Dump Valves
- Radiant Foil In Front Cap Underbelly, and Slides

OPTIONAL FEATURES (NOT PICTURED)

- PSX2 Power Stabilizers
- 2nd A/C (Soft Start; Where Applicable)
- Slide Toppers
- Thermopane Windows
- MORryde Storage Tray (Where Applicable)
- Power Package (Select Models)
 - 5 - 200W Solar Panels
 - 3000W Inverter
 - 460Ah Lithium Battery

GREAT EXPECTATIONS PACKAGE

2 Tone Fiberglass Exterior, High Gloss Front Cap, Automotive Front Windshield, Power Tongue Jack, Stabilizer Jacks, Composite Structural Exterior Walls, Vacuum Laminated Roof, Aluminum Cage Construction, Frameless Windows, Slam Latch Baggage Doors w/Magnetic Catch, 15,000 BTU A/C, Enclosed Underbelly w/Thermostatically Controlled Heated Holding Tanks, Prewire for Backup Camera, Power Awning, 200W Solar Panel w/Inverter & Additional Solar Side Port, AIR 360+ Omnidirectional Antenna w/Wi-Fi Prep, OneControl® APP Monitor Panel, 12V Smart Entertainment TV w/Stereo, Outside Speakers, 12V Refrigerator, Fireplace (Where Available), 35K BTU Furnace (20K BTU 2109S), Microwave, Gas Oven w/Glass Cover, 6 Gallon Quick Recovery Auto Ignite Gas/Electric Waterheater, Dexter® Torflex® Torsion Axles, GOODYEAR Endurance Tires w/TPMS Tire Pressure Monitoring System, Roller Shades, Solid Entry Step Rail, MorRyde Strut Assist Steps (Strut N/A 2 Step), Key Alike Doors, Undermount Kitchen Sink w/ High Rise Faucet, Solid Surface Kitchen Countertops, Soft Close Roller Bearing Drawers, Hidden Hinge Cabinet Doors, Rear Ladder, Black Tank Flush, Water Saver Shower Miser, Exterior Hot/ Cold Water Port, Water Filter Supplied, Gas Griddle Prep, 2" Accessory Hitch, Spare Tire Carrier & Cover, Power Awning w/ Adjustable Rain Dump & LED Lighting



**SCAN TO LEARN RV
TERMINOLOGY OR VISIT:**

FORESTRIVERINC.COM/RV-DEFINITIONS

ROO

OPEN UP ADVENTURE



Combining the flexibility of a tent camper with the security of a hard-sided trailer, the Rockwood Roo expandable travel trailer is built for families and groups who need room to stretch out and unwind. With expansive sleeping space for up to nine and generous living areas, the Roo offers a unique blend of versatility and comfort. Easy to tow and quick to set up, it's ideal for those who want to maximize their sleeping capacity without upgrading their tow vehicle.



**SCAN TO VIEW PRICING AND
MORE INFORMATION OR VISIT:**

[FORESTRIVERINC.COM/RVS/
ROCKWOOD-ROO](https://FORESTRIVERINC.COM/RVS/ROCKWOOD-ROO)



ROO KEY FEATURES

- 5 Year Tent Warranty
- Dual Maxxair 4-Speed Fans with Covers
- 6-Sided Aluminum Framing w/Aluminum Dinettes, Bed Ends & Composite Construction
- One Piece Vacuum Laminated Roof w/High Density Block Foam Insulation
- 5/8" Tongue & Groove Plywood Floors w/One Piece Seamless Linoleum Coverage
- Superior Cable Bed Support—800 lb Capacity

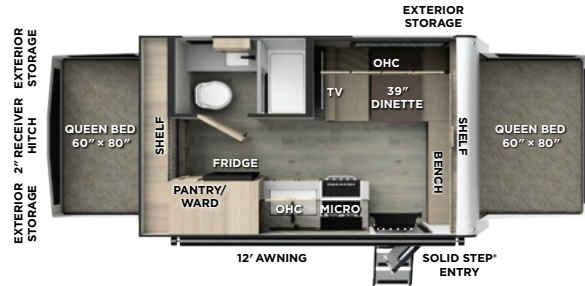
17E

UVW: 3695 lb

CCC: 1723 lb

Hitch Weight: 418 lb

Exterior Length: 18' 9"



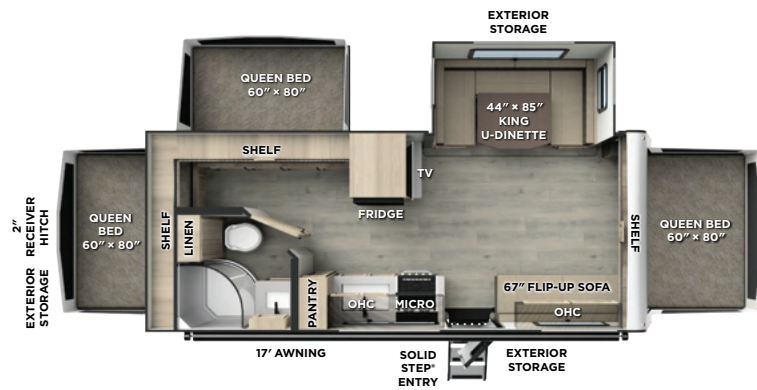
233S

UVW: 4976 lb

CCC: 1702 lb

Hitch Weight: 678 lb

Exterior Length: 24' 10"



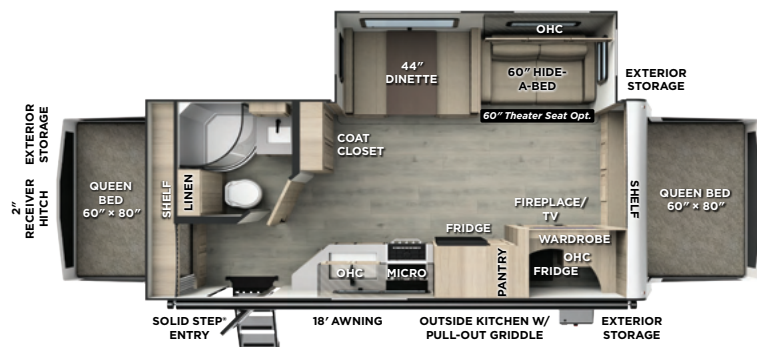
235S

UVW: 5478 lb

CCC: 1448 lb

Hitch Weight: 766 lb

Exterior Length: 24' 10"



ROO SPECIFICATIONS

Floorplan	Closed Length	Open Length	Hitch Weight	Axle Weight	UVW	CCC	Awning	Fresh Water	Gray Water	Black Water
17E	18' 9"	23' 6"	418 lb	3239 lb	3695 lb	1723 lb	12'	54 gal	29 gal	29 gal
233S	24' 10"	29' 7"	678 lb	4260 lb	4976 lb	1702 lb	17'	54 gal	29 gal	29 gal
235S	24' 10"	29' 7"	766 lb	4674 lb	5478 lb	1448 lb	18'	54 gal	29 gal	29 gal



SUPERIOR CONSTRUCTION

- Complete Composite Wall Construction
- 5/8" Tongue & Groove Plywood Floor
- Fully Laminated Walkable Roof
- 6-Sided Full-Aluminum Frame
- Aluminum Floor Joists
- Aluminum Dinette and Bed Ends
- Easy Reach Lockable Bed Latch System

STANDARD FEATURES

- 200W Solar Panel with 30 AMP Charge Controller
- Back-Up Camera Prep
- Dual Maxxair 4-Speed Fans with Cover
- Winegard Air 360+ Prepped for Wi-Fi
- Key-Alike Lock System
- Slam Latch Baggage Doors
- Additional Solar Prep
- Double Battery Box
- Double 20 lb LP Tanks
- 5-Year Tent Warranty

SAFETY STANDARDS

- Nitrogen-Filled Tires
- Dexter® Axles
- Dexter® Nev-R-Adjust® Brakes
- Dexter® E-Z Lube® Hubs
- MORryde Solid Supported Steps

CLIMATE PROTECTION PACKAGE

- Radiant Foil Insulated Underbelly
- Enclosed Underbelly

OPTIONAL FEATURES (NOT PICTURED)

- Additional 200W Solar Panel
- Slide Toppers
- 2nd A/C (*Soft Start; Where Applicable*)

NEAR NATURE PACKAGE

2 Tone Fiberglass Exterior, Square Bunk Ends w/Attached Boots & Aircraft Cable, Automotive Grade Easy Latch Bunk Latch/Lock, Power Tongue Jack, Stabilizer Jacks, Composite Structural Exterior Walls, Vacuum Laminated Roof, Aluminum Cage Construction, Framed Windows, Slam Latch Baggage Doors w/Magnetic Catch, 15,000 BTU A/C, Enclosed Underbelly, Prepwire for Backup Camera, Bunk Fan/Light Combo, Power Awning, 200W Solar Panel & 30amp Controller, Additional Solar Side Port, AIR 360+ Omnidirectional Antenna w/Wi-Fi Prep, 12V Smart TV, 12V Refrigerator, Fireplace (Where Available), Microwave, Gas Oven w/Glass Cover, 35K Furnace, 2 Maxxair Vents w/Covers, 6 Gallon Quick Recovery Auto Ignite Gas/Electric Water Heater, Endurance Tires, Roller Shades, Key Alike Doors, Residential Look Kitchen Countertops w/Undermount Sink, Soft Close Roller Bearing Drawers, Hidden Hinge Cabinet Doors, Black Tank Flush, Water Saver Shower Miser, Water Filter Supplied, Exterior Hot/Cold Water Port, Gas Griddle Prep, 2" Accessory Hitch, Spare Tire Carrier & Cover

235S ROO ONLY

Fireplace Standard, Griddle Installed



**SCAN TO LEARN RV
TERMINOLOGY OR VISIT:**

FORESTRIVERINC.COM/RV-DEFINITIONS

ULTRA LITE

LIGHTWEIGHT BUILD, HEAVYWEIGHT FEATURES



The Rockwood Ultra Lite travel trailer strikes the perfect balance between size, style, and substance. Designed for travelers who crave upscale features in a towable package, the Ultra Lite delivers residential-style amenities, spacious floorplans, and refined finishes—all without weighing you down. Whether you're setting up for a weekend at the lake or a cross-country escape, this model brings premium comfort to your adventures without compromise.



**SCAN TO VIEW PRICING AND
MORE INFORMATION OR VISIT:**

[FORESTRIVERINC.COM/RVS/
ROCKWOOD-ULTRA-LITE](https://FORESTRIVERINC.COM/RVS/ROCKWOOD-ULTRA-LITE)





ULTRA LITE KEY FEATURES

- 6-Sided Aluminum Framing w/Aluminum Dinettes, Bed Bases & Composite Construction
- One Piece Vacuum Laminated Roof w/High Density Block Foam Insulation
- 5/8" Tongue & Groove Plywood Floors w/One Piece Seamless Linoleum Coverage
- Goodyear Endurance Tires
- Dexter® Torflex® Axles
- Balance Beads & Wheel-Banded Tire Pressure Monitoring System (TPMS)
- MORryde Solid Steps & Extended Entry Door Grab Handle

2606WS

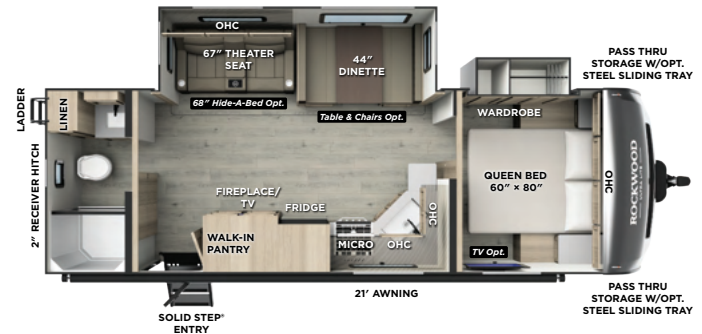


UVW: 6550 lb

CCC: 1992 lb

Hitch Weight: 742 lb

Exterior Length: 29' 9"



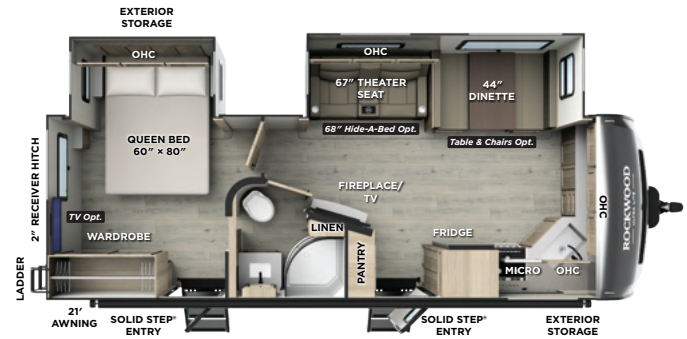
2608BS

UVW: 6876 lb

CCC: 1826 lb

Hitch Weight: 902 lb

Exterior Length: 29' 8"



2618RD

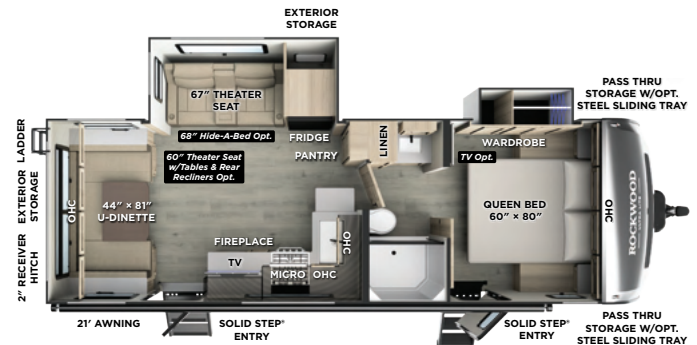


UVW: 6554 lb

CCC: 1920 lb

Hitch Weight: 674 lb

Exterior Length: 29' 9"



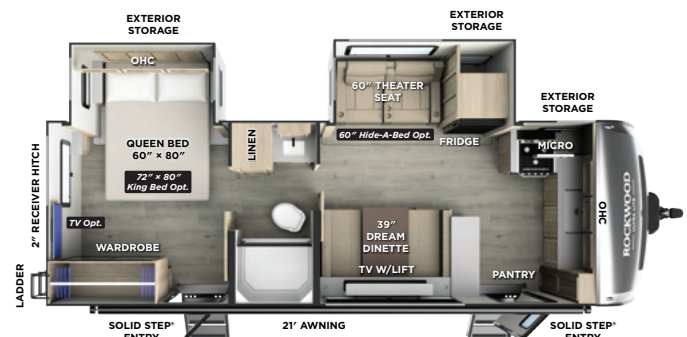
2619FK

UVW: 6834 lb

CCC: 1791 lb

Hitch Weight: 825 lb

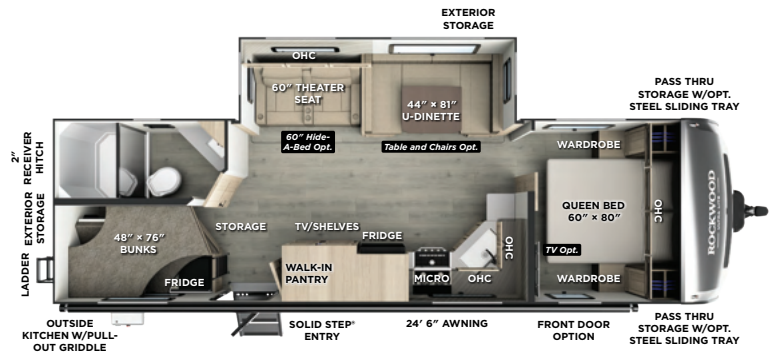
Exterior Length: 29' 8"



2706BH



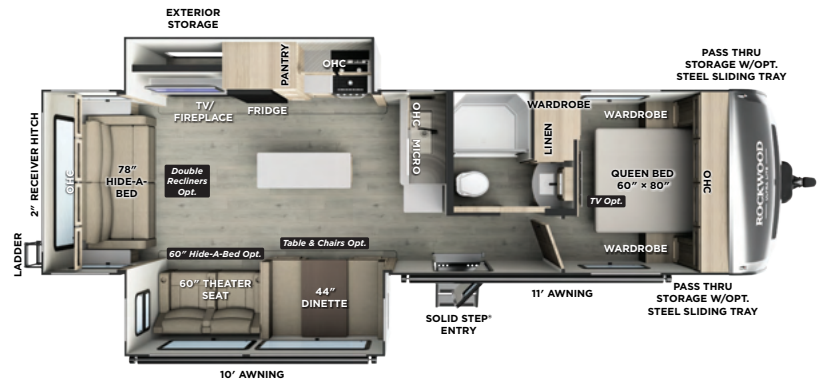
UVW: 7059 lb
 CCC: 1531 lb
 Hitch Weight: 790 lb
 Exterior Length: 32' 10"



2906RL



UVW: 8149 lb
 CCC: 1840 lb
 Hitch Weight: 864 lb
 Exterior Length: 35' 4"



2908SRL



UVW: 7873 lb
 CCC: 2076 lb
 Hitch Weight: 930 lb
 Exterior Length: 35' 4"



POWER PACKAGE



- 15A Receptacle Charging with Combimaster Power Sharing Feature
- 3500W Inverter/Charger with 160A Charging Capacity
- 13,500 BTU Soft Start Power Saver A/C
- 5" Touchscreen Monitor
- 50A DC/DC Charger
- 460Ah Mastervolt Lithium Battery
- Integrated 60A MPPT Charge Controller
- (6) 200W GoPower® Solar Panels
- Centralized System Disconnect Switch

Available in Select Ultra Lite Models Only

2918BH

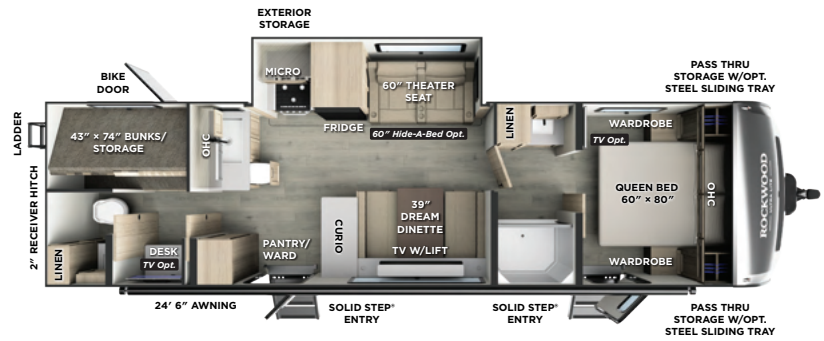


UVW: 7872 lb

CCC: 2028 lb

Hitch Weight: 920 lb

Exterior Length: 35' 5"



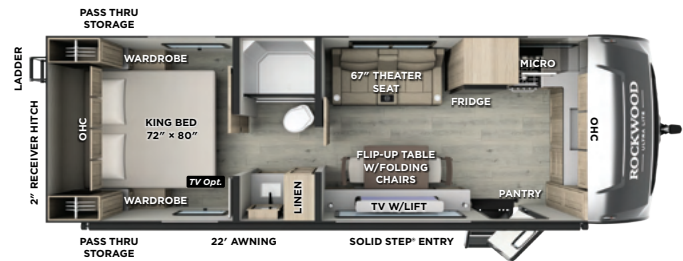
301FKT NEW

UVW: 6259 lb

CCC: 2315 lb

Hitch Weight: 774 lb

Exterior Length: 29' 10"



302RDT NEW

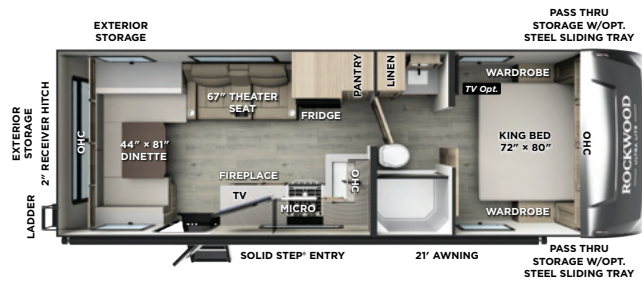


UVW: 6239 lb

CCC: 2362 lb

Hitch Weight: 801 lb

Exterior Length: 29' 11"



ULTRA LITE SPECIFICATIONS

Floorplan	Length	Height	Width	Hitch Weight	Axle Weight	UVW	CCC	Awning	Fresh Water	Gray Water	Black Water
2606WS	29' 9"	11' 2"	8'	742 lb	5770 lb	6550 lb	1992 lb	21'	54 gal	90 gal	45 gal
2608BS	29' 8"	11' 2"	8'	902 lb	5936 lb	6876 lb	1826 lb	21'	54 gal	90 gal	45 gal
2618RD	29' 9"	11' 3"	8'	674 lb	5842 lb	6554 lb	1920 lb	21'	54 gal	45 gal	45 gal
2619FK	29' 8"	11' 3"	8'	825 lb	5950 lb	6834 lb	1791 lb	21'	54 gal	90 gal	45 gal
2706BH	32' 10"	11' 2"	8'	790 lb	6210 lb	7059 lb	1531 lb	24' 6"	54 gal	90 gal	45 gal
2906RL	35' 4"	11' 3"	8'	864 lb	7247 lb	8149 lb	1840 lb	F11', R10'	54 gal	45 gal	45 gal
2908SRL	35' 4"	11' 2"	8'	930 lb	6905 lb	7873 lb	2076 lb	19'	54 gal	45 gal	45 gal
2918BH	35' 5"	11' 2"	8'	920 lb	6893 lb	7872 lb	2028 lb	24' 6"	54 gal	90 gal	90 gal
301FKT	29' 10"	11' 3"	8' 4"	774 lb	5426 lb	6259 lb	2315 lb	20'	54 gal	45 gal	45 gal
302RDT	29' 11"	11' 3"	8' 4"	801 lb	5379 lb	6239 lb	2362 lb	21'	54 gal	45 gal	45 gal

SUPERIOR CONSTRUCTION

- Complete Composite Wall Construction
- Fully Laminated Walkable Roof
- 6-Sided Full-Aluminum Frame
- 5/8" Tongue & Groove Plywood Floor
- Aluminum Floor Joists
- Aluminum Dinette, Bed, and Bunk
- Painted Fiberglass Front Cap with Clear Coat
- Automotive Glass Windshield

STANDARD FEATURES

- 200W Solar Panel w/30 AMP Charge Controller
- Back-Up Camera Prep
- Maxxair 4-Speed Fan with Cover
- Winegard Air 360+ Prepped for Wi-Fi
- Framed Windows
- Key-Alike Lock System w/Slam Latch Baggage Doors
- Additional Solar Prep
- Double Battery Box
- Double 20 lb LP Tanks

SAFETY STANDARDS

- Dexter® Torflex® Axles
- Wheel-Banded Tire Pressure Monitoring System (TPMS)
- Nitrogen-Filled Goodyear
- Endurance Tires with Balancing Beads
- MORryde Solid Supported Steps

CLIMATE PROTECTION PACKAGE

- 12V Thermostat-Controlled Heated Tanks and Dump Valves
- Radiant Foil In Underbelly, Front Caps, and Slides

OPTIONAL FEATURES (NOT PICTURED)

- Power Package (Where Applicable)
- Additional 200W Solar Panel
- Slide Toppers
- 2nd 15K BTU A/C
- Dexter® Tow Assist ABS and Sway Mitigation System
- MORryde Sliding Storage Tray (Where Applicable)
- Thermopane Windows

COAST TO COAST PACKAGE

Clay Fiberglass Exterior, High Gloss Fiberglass Cap, Composite Structural Exterior Walls, Vacuum Laminated Roof, Aluminum Cage Construction, Front Windshield, Slam Latch Baggage Doors w/Magnetic Catch, Framed Windows, 15,000 BTU A/C, Enclosed Underbelly w/Thermostatically Controlled Heated Holding Tanks, Prewire for Backup Camera, Power Awning w/Adjustable Rain Dump & LED Lighting, 200W Solar Panel & Additional Solar Side Port, AIR 360+ Omnidirectional Antenna w/Wi-Fi Prep, OneControl® APP Monitor Panel, Smart TV, Bunkroom Smart Entertainment TV, Speakers w/Bluetooth® Connection, Outside Speakers, 50AMP Service, 12V Refrigerator, Fireplace (Where Available), Microwave, Gas Oven w/Glass Cover, 35K BTU Furnace, 6 Gallon Quick Recovery Auto Ignite Gas/Electric Water Heater, Dexter® Torflex® Torsion Axles, GOODYEAR Endurance Tires w/TPMS Tire Pressure Monitoring System, Roller Shades, Key Alike Doors, Undermount Kitchen Sink w/High Rise Faucet, Solid Surface Kitchen Countertops, Soft Close Roller Bearing Drawers, Hidden Hinge Cabinet Doors, Rear Ladder, Black Tank Flush, Shower Miser, Exterior Hot/Cold Water Port, Water Filter Supplied, Gas Griddle Prep, 2" Accessory Hitch, Spare Tire Carrier, Power Tongue Jack, Dual 20 LP Tanks, Solid Entry Step Rail, Lino Flooring in Slideout

PLATINUM PACKAGE **NEW**

- 5.3 Auto-Leveling
- Frameless Windows
- 1800W Inverter
- MORryde Strut Assist Entry Step
- Dual 30 lb LP Tanks

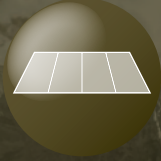


**SCAN TO LEARN RV
TERMINOLOGY OR VISIT:**

FORESTRIVERINC.COM/RV-DEFINITIONS

THE ROCKWOOD PROMISE

Rockwood stands behind its craftsmanship with unwavering commitment from start to finish. When you choose Rockwood, you're choosing an RV backed by our comprehensive limited warranties. For complete details, please consult the written warranty or your Rockwood dealer.



LIMITED LIFETIME ROOFING WARRANTY

**Lifetime warranty limited to
original owner*



TWO YEAR FIBERGLASS WARRANTY



TEN YEAR TORFLEX® AXLE WARRANTY



ONE YEAR BUMPER TO BUMPER WARRANTY

MILLERSBURG MADE

The story of Rockwood is deeply intertwined with the town of Millersburg, Indiana. Here, generations of families have contributed to the creation of RVs known for their reliability and lasting value. "Millersburg Made" signifies a commitment to community and a dedication to building RVs you can trust. It's the assurance that your Rockwood has been built with care, by people who take pride in their work and stand behind every RV that leaves our doors.

EACH NEW FOREST RIVER PURCHASE PROVIDES:

- ✓ Pre-delivery Inspection.
- ✓ Free Membership to Forest River Owners Group (FROG).
Learn more at www.forestriverfrog.com.
- ✓ A Contribution to Care Camps Foundation www.carecamps.org.
- ✓ 1 Year Free Roadside Assistance from Date of Purchase.



LEARN MORE:

Scan this QR code with your mobile device to learn more about Forest River.



SPECIFICATION DEFINITIONS:

Scan this barcode using a QR reader on your smartphone to learn RV terminology and more!



YOUR **ROCKWOOD** DEALER

All information contained in this brochure is believed to be accurate at the time of publication. However, during any model year, it may be necessary to make changes to the manufacturing process of the units and information in this brochure. Your unit may differ from the information in this brochure due to any changes in the manufacturing process and equipment. Forest River, Inc., reserves the right to make all such changes without notice, including prices, colors, combinations, materials, equipment and specifications of any model as well as the addition of new models and the discontinuance of models shown in this brochure. Therefore, please consult with your Forest River dealer and confirm the availability of any materials, combinations, designs, or specifications that are meaningful to your purchase decision. © 2025 Rockwood RV, a Division of Forest River, Inc., a Berkshire Hathaway Company. All Rights Reserved. Forest River, Inc. 09/25