

**WORK + PLAY**



**NEVER  
STOP  
GOING.™**



**FOREST RIVER**

[FORESTRIVERINC.COM](http://FORESTRIVERINC.COM)



**FOREST RIVER**

## **40 YEARS OF PROUD HISTORY...**

Since 1996, we've been building the foundation for your next adventure. We've grown from a simple vision into North America's leading manufacturer of RVs, cargo trailers, pontoon boats, buses, vans, and trucks. Find out where Forest River will take you.

# **NEVER STOP GOING.™**

[FORESTRIVERINC.COM](http://FORESTRIVERINC.COM)





# WORK + PLAY

## WORK + PLAY

is a versatile Toy Hauler RV that offers it all – a relaxing home base for weekend getaways, or family trips cross country. Anytime you want to pack up for an adventure, Work + Play is ready with plenty of space for all your gear, quads or side-by-sides. Choose the well-equipped floorplan that fits your active lifestyle.



# WORK + PLAY STANDARDS

---

## EXTERIOR STANDARDS

- 96" Construction
- 5" Crowned Reinforced Full Walkable Roof
- Aluminum Solid Entry Step
- Alumicage Construction
- Pinch Rolled and Vacuum Bonded Walls with Interior and Exterior Azdel Composite Panels
- Heated And Enclosed Underbelly
- Radius Entrance And Baggage Doors
- Patio Ready Ramp Door With Cables
- Key Lock Ramp Door Latches
- Power Awning With LED Light Strip
- Rain Gutters With Extended Drip Spouts
- Power Tongue Jack
- Dual Battery Rack
- Black Tank Flush
- 4-Point Manual Stabilizer Jacks
- Rear Cargo Loading LED Light
- Moryde Safe-T Rail On Entry Door
- Satellite And Cable Prep
- Outside Spray Port
- Slam Latch Door Catches
- 30 AMP Service (LT's)
- Detachable Power Cord
- Rear Camera Prep
- RVIA
- Indoor/Outdoor Speakers With Surround Sound
- Underlite Wheel Wells
- Slide topper prep

## INTERIOR STANDARDS

- On-Demand 42,000 BTU Water Heater
- High Density Rubberized Oil/Gas/Moisture Resistant Flooring Garage Area
- Hidden Hinge Cabinets And Doors
- Easy Glide Full Extension Ball Bearing Drawer Guides
- 30,000 BTU Auto-Ignition Ducted Furnace With Wall Mount Thermostat
- Medicine Cabinet With Shelf
- Shower With Surround And Glass Enclosed Doors
- Hi-Rise Porcelain Foot Flush Toilet
- Winterization Kit
- Skylight Above Shower (N/A 21LT)
- Utensil Drawer - Most Models
- Stainless Steel Single Basin Sink
- Residential Bed Spread
- Theater Seats (30GS)
- Euro Recliners (21LT, 27LT, 27KB, 29SS)
- Smart TV
- Rear Detachable Screen

- King Bed 72" x 80" With Cover (Residential Queen 18LT, 21LT, 30GS)
- Bedroom TV Hookups
- 5/8" ESP Wood Decking
- USB Charging Ports - Multiple Locations
- 12 Volt Power Vent In Bath With Remote
- 10 Cu. Ft. 12V Refrigerator
- LED Strip Lighting With Dimmer
- Central Vacuum
- TPMS System With Display Kit

## EXTERIOR VALUE PACKAGE (REQUIRED)

- 8" Mega Rail Powder Coated Chassis (10" On 29SS And 30GS)
- One Piece Tufflex PVC Roof Membrane
- Fiberglass Front Cap With Rock Guard
- Heavy Duty Axles
- Spare Tire
- 15" Aluminum Wheels With E-Rated Radial Tires (18LT, 21LT, 27LT, 27KB)
- 16" Aluminum Wheels With Radial Tires (29SS, 30GS)
- 15,000 BTU Ducted A/C
- Tinted Safety Glass Windows
- Air-Filled Tires
- LED Lighting
- 30" Radius Entrance Door
- 2-30 lb LP Tanks With Cover
- Power Awning With LED Light Strip
- Winegard Air 360 And TV Antenna
- Battery Disconnect
- SafeRide RV Roadside Assistance
- 300W Solar Panel With MPPT Control Charger

## INTERIOR VALUE PACKAGE (REQUIRED)

- 1,500 lbs. Rated D-Rings
- 10 Cu. Ft. 12V Refrigerator
- Microwave
- Cooktop With Oven

## HIGH PROFILES STANDARD FEATURES (27KB, 29SS, 30GS)

- 102" Wide Body Construction
- Zero Gravity Ramp Door
- Aluminum Solid Entry Step
- 50 AMP Service
- Pull-Down Roller Night Shades
- Generator Prep
- 30 Gallon Fuel Station
- Rear Pull-Down Screen
- Electric Stabilizers And Power Tongue Jack
- Electric Queen Bed Lift With Wall Mounted Sofas



## WORK + PLAY OPTIONS

### LT OPTIONAL EQUIPMENT (18LT, 21LT, 27LT)

- Electric Queen Bed Lift With Sofas
- 30 Gallon Fuel Station
- 50 AMP Service With Second A/C Prep
- Second 15K BTU A/C
- Ramp Door Party Patio Kit
- CSA

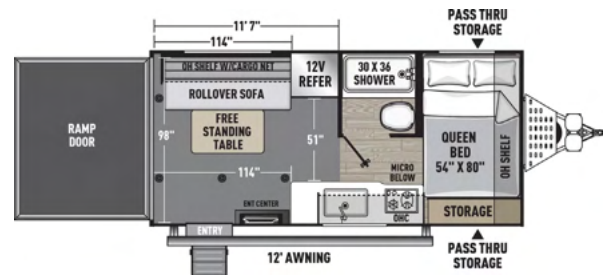
### HIGH PROFILES OPTIONAL EQUIPMENT (27KB, 29SS, 30GS)

- 5.5K Yamaha Generator
- Second 15K BTU A/C
- Ramp Door Party Patio Kit
- CSA



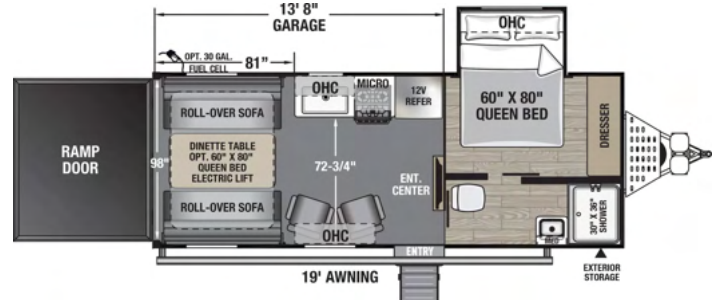
# 18LT

**Exterior Height:** 11' 3"  
**Exterior Length:** 24' 6"  
**GVWR Front:** 9,192 lbs



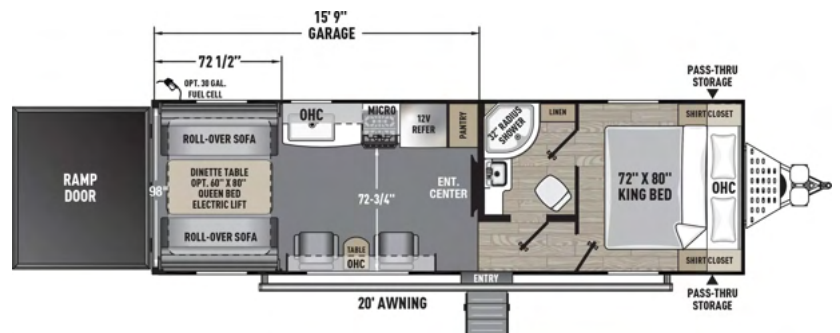
# 21LT

**Exterior Height:** 11' 5"  
**Exterior Length:** 27' 5"  
**GVWR Front:** 9,735 lbs



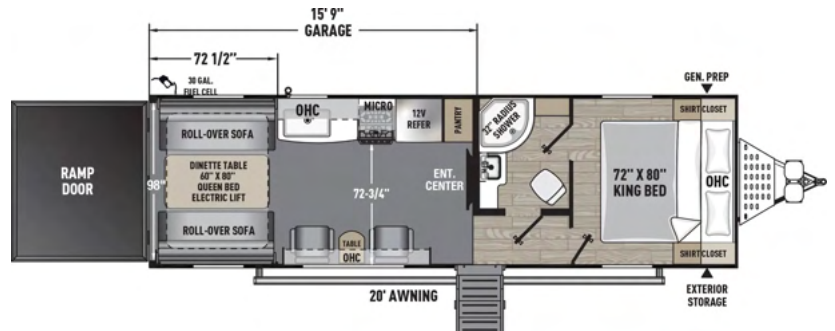
# 27LT

**Exterior Height:** 11' 3"  
**Exterior Length:** 32' 11"  
**GVWR Front:** 10,500 lbs



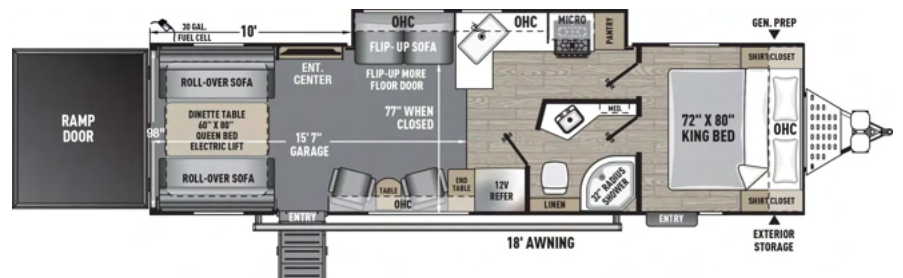
# 27KB

**Exterior Height:** 12' 0"  
**Exterior Length:** 32' 11"  
**GVWR Front:** 11,000 lbs



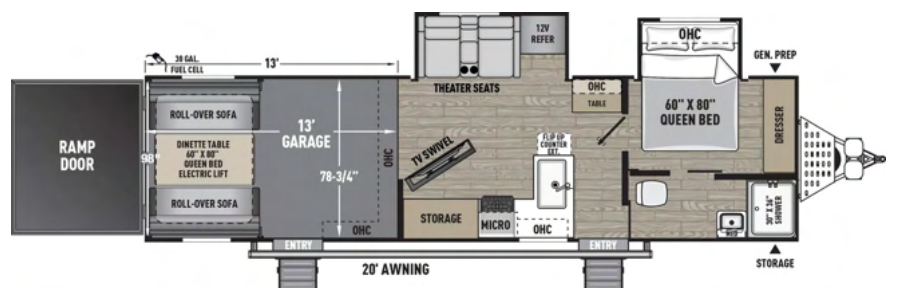
# 29SS

**Exterior Height:** 12' 4"  
**Exterior Length:** 36' 4"  
**GVWR Front:** 12,500 lbs



# 30GS

**Exterior Height:** 12' 3"  
**Exterior Length:** 37' 6"  
**GVWR Front:** 12,500 lbs



# WORK + PLAY

## SPECIFICATIONS

	18 LT	21 LT	27 LT	27 KB	29 SS	30 GS
Shipping Weight (lbs.)	5,200	6,038	6,730	7,428	8,582	8,974
Carrying Capacity (lbs.)	3,982	3,637	3,710	3,512	3,858	3,466
UVW	5,270	6,098	6,790	7,488	8,642	9,033
GVWR	9,192	9,735	10,500	11,000	12,500	12,500
Hitch Height	872	935	1,072	1,198	1,312	1,438
Exterior Height (Includes A/C)	11'-3"	11'-5"	11'-3"	12'	12'-4"	12'-3"
Fresh Water Capacity (gal.)	98	98	98	98	98	98
Grey Water Capacity (gal.)	35	70	35	35	50	65
Waste Water Capacity (gal.)	35	35	35	35	35	35
Awning Length	12'	19'	20'	20'	18'	20'
Wheel Size	15 x 6; 6 - 5.5	15 x 6; 6 - 5.5	15 x 6; 6 - 5.5	15 x 6; 6 - 5.5	15 x 6; 6 - 5.5	16 x 6; 6 - 5.5
Exterior Length (Bumper To Hitch)	24'-6"	27'-5"	32'-11"	32'-11"	36'-4"	37'-6"
Interior Height (Coach)	85"	85"	85"	91"	91"	91"
Garage Length	11'-7"	13'-8"	15'-9"	15'-9"	15'-7"	13'

**GVWR (Gross Vehicle Weight Rating)** is the maximum permissible weight of the unit when fully loaded. It includes all weights, inclusive of all fluids, occupants, cargo, optional equipment and accessories. For safety and product performance do NOT exceed the GVWR.

All information contained in this brochure is believed to be accurate at the time of publication. However, during the model year, it may be necessary to make revisions and Forest River, Inc. reserves the right to make all such changes without notice, including prices, colors, materials, equipment and specifications as well as the addition of new models and the discontinuance of models shown in this brochure. Therefore, please consult with your Forest River, Inc. dealer and confirm the existence of any materials, design or specifications that are material to your purchase decision.

# THE WORK + PLAY ADVANTAGE

What is the Work + Play advantage? It's the collection of unique features offered in a Work + Play RV to ensure a smoother ride, a better camping experience, and a trailer that will last for years.

## REINFORCED LAMINATION

We vacuum bond and pinch roll every sidewall, then perform a pull-adhesion test.

Most manufacturers just do one process or the other, but by doing both we improve the strength and longevity of the sidewalls.

## COOL STREAM DUCT™

Our patented duct system evenly disperses air through the whole coach.

We use residential ducting instead of Styrofoam because it's antimicrobial, preventing the growth of bacteria and ensuring a cool, clean coach in even scorching heat.

## AZDEL™ COMPOSITE

Most manufacturers use wood sidewalls that can expand, swell, and eventually mold.

We use Azdel.

It's impervious to water, won't rot or mold, and with less than a 1% chance of delaminating, it ensures the long-term integrity of the sidewalls.

## DIGITAL OWNER'S MANUAL

Our owner's manuals are easy to access through the Coachmen website or our free app.

Supplemented with videos, PowerPoints, and more, it's got all you need to know about your coach.

# FOREST RIVER

Forest River RV, a Division of Forest River, Inc.,  
A Berkshire Hathaway Company  
P.O. Box 3030, Elkhart, IN 46515-3030

## EACH NEW FOREST RIVER PURCHASE PROVIDES:

- ✓ Pre-delivery Inspection.
- ✓ Free Membership to Forest River Owners Group (FROG).  
Learn more at [www.forestriverfrog.com](http://www.forestriverfrog.com).
- ✓ A Contribution to Care Camps Foundation [www.carecamps.org](http://www.carecamps.org).
- ✓ 1 Year Free Roadside Assistance from Date of Purchase.

## LEARN MORE:

Scan this QR code with your mobile device to learn more about Forest River.



## SPECIFICATION DEFINITIONS:

Scan this barcode using a QR reader on your smartphone to learn RV terminology and more!



YOUR WORK + PLAY DEALER