

# FR3

*Gas Class A Motor Home*  
CROSSOVER



# FR3

BY FOREST RIVER

## CONSTRUCTION & EXTERIOR

Grey Gel-Coat Sidewalls w/ Graphics  
 Painted One-Piece Fiberglass Front Cap  
 Projector Head Lights w/ LED Driving Rings  
 Hella LED Fog Lights w/ Driving Rings  
 Colored Back Up & Side Cameras  
 "SUPER STORAGE" Rear Cargo Compartment (112 cu ft)  
 Rotocast Storage Boxes w/ Drains  
 Radius Alpha SuperFlex Roof (Grey)  
 Roof Roof Ladder  
 16' Power Patio Awning  
 Slide Room Topper Awnings  
 Exterior Shower  
 Rubber Tread Entry Steps  
 Outside Shower  
 Power Entry Step  
 Vacuum Bonded Construction

## EXTERIOR OPTION

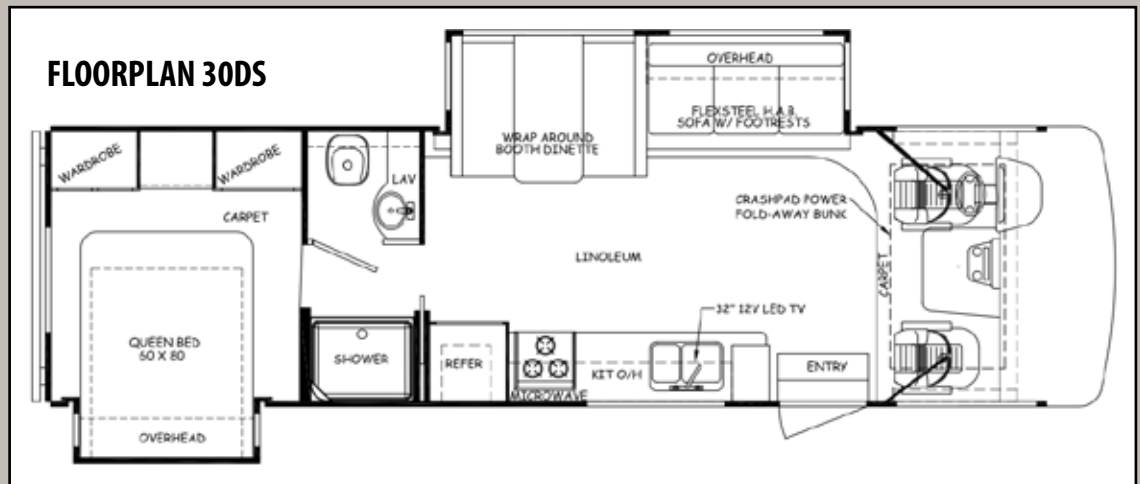
Outside Entertainment Center (Blue Tooth Capable)  
 Auxiliary Battery  
 Automatic Hydraulic Leveling Jacks

## AUTOMOTIVE & COCKPIT

Molded ABS Automotive Dash w/ Laptop Console & Power Outlet  
 Power Front Sun Shade (Windshield)  
 Ultra Leather Driver / Passenger Seating w/ Double Stitching  
 Low Profile Cockpit Engine Cover  
 DASH - Bluetooth AM/FM/CD w/ LCD Back-Up Monitor, Aux. & Speakers  
 5,000 Lbs. Hitch  
 Automotive Bonded One Piece Windshield  
 Black Exterior Mirrors  
 245/70R19.5 G670 Goodyear RV Tires w/ Value Stem Extenders

## INTERIOR

"CRASHPAD" Power Fold-Away Overhead Bunk  
 Jensen 32" LED 12 Volt TV  
 RADIUS Interior Ceiling  
 Wide Wood Plank Residential Linoleum



Jensen 12 Volt AM/FM/DVD/Bluetooth Entertainment System  
 13,500 BTU Roof Air Conditioner  
 Vintage Cherry Cabinetry  
 Brushed Nickel Hardware & Plumbing Fixtures  
 FLEXSTEEL Ultra Leather Hide-A-Bed Sofa w/ Dual Footrests  
 Ultra Leather Wrap Around Dinette booth w/ Comfort Cushions  
 Heavy Duty Full Extension Drawer Guides & Hardware Throughout  
 Roller Shade Window Treatments

## ELECTRICAL & PLUMBING

4.0 KW Onan Gas Generator  
 Battery Disconnect Switch  
 Emergency Start Switch  
 30 Amp Power Cord w/ Storage Compartment  
 6 Gallon Water Heater  
 Artic Pack System (Heated Holding Tanks)  
 35,000 BTU Furnace

## GALLEY

Double Door Dometic Gas/Electric Refrigerator  
 3 Burner Cook Top w/ Oven & Cover  
 Microwave Oven  
 Large Double Bowl Stainless Steel Sink & Fixture  
 Laminate Countertops  
 Large Coat/Broom/Storage Closet  
 Trash Can Storage Area Below Sink

## BEDROOM & BATHROOM

60" x 80" Queen Bed w/ Headboard  
 Bedroom Wardrobe w/ Drawers  
 China Bowl Toilet  
 Stainless Steel Lavatory Sink & Fixture  
 Space Saver Shower Bar w/ Curtain

## SAFETY & CONVENIANCE

Entry Door with Deadbolt Lock  
 Forest River Command Center  
 Smoke, LPG, & Carbon Monoxide Detectors  
 Fire Extinguisher

## 30DS SPECIFICATIONS

CHASSIS	FORD	LP TANK	24 Gal
ENGINE	V-10	FRESH WATER	57 Gal
HORSEPOWER	362 HP	GREY TANK	41 Gal
TORQUE	457 Ft-Lbs.	BLACK TANK	41 Gal
WHEELBASE	190"	LENGTH	31"4"
FUEL TANK	80 Gal	EX. WIDTH	100"
GVWR	18,000 Lbs.	EX. HEIGHT	12'2"
GCWR	23,000 Lbs.	INT. WIDTH	95.5"
Exterior Storage (cu. ft.)	112	INT. HEIGHT	82"
Safety Belts	8		



### Learn More

Scan this barcode using a QR Reader on your smart phone to learn more about Forest River.



A Berkshire Hathaway company.

**Forest River, Inc. \*FR3 Division\* 58277 State Rd 19 South Elkhart, IN 46517**  
**574-532-1240 www.forestriverinc.com**