

MORryde Zero G Ramp Door Spring Adjustment

- a. The first step is to remove covers over the spring adjusting bolts. There are 2 different versions of these covers. One with 2 screws holding the cover on, and one is a plastic cover that can be pried off. Do this on both sides of the frame.

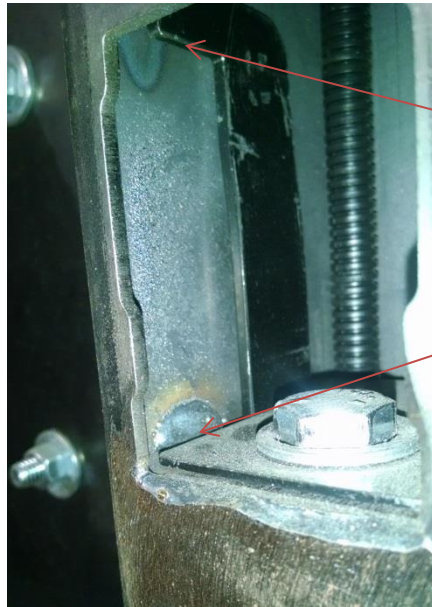


Version With Screws



Version with plastic cover

2. Once the cover is removed you will see a bolt inside. This is the bolt that adjusts the spring tension. If the door is heavy, you want to tighten the bolt, turn clockwise. If the door is too light you want to loosen the bolt, turn counterclockwise. You want to make sure that you don't loosen the bolt enough so that the hook shown in the picture below touches the plate that the bolt head sits on. This would be too loose and may cause the spring to become disconnected.



Using a $\frac{3}{4}$ " socket loosen or tighten the bolt to get the desired spring assist to the door. Make sure the hook does not touch the plate the bolt head is sitting on.

3. The last step is to re-install the covers over the adjusting bolts.