



1120 North Main Street • Elkhart, IN 46514

PHONE: 574-264-2131 FAX: 574-206-9713

INTERNET: <http://www.atwoodmobile.com>

LITERATURE NUMBER MPD 53382

RECESSED GLASS BI-FOLD COVER

Model # 52929

ENGLISH

FOR YOUR SAFETY

READ ALL INSTRUCTIONS BEFORE OPERATING

Installer: Provide these instructions to the consumer.
Consumer: Keep documents for future reference.

SERVICE CALLS & QUESTIONS

Location and phone numbers of qualified Service Centers can be found at our website <http://www.atwoodmobile.com> or call 866-869-3118 to locate a Service Center.

SAFETY ALERT SYMBOLS

Safety Symbols alerting you to potential personal safety hazards. Obey all safety messages following these symbols.



WARNING

avoid possible
injury or death



CAUTION

avoid possible
injury and/or property damage



WARNING

MAY CAUSE PERSONAL INJURY OR DEATH

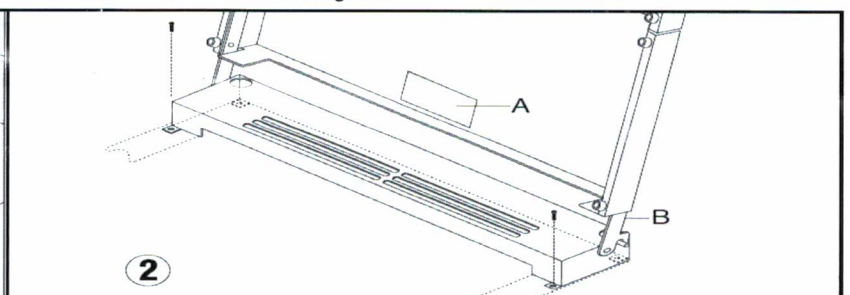
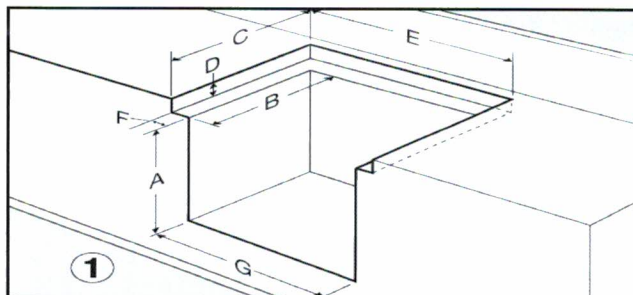
For your safety and protection, it is important that this installation manual is read and understood before installation or use. Failure to properly install the unit or attempting to modify it in any way can be extremely hazardous and may result in property damage and/or personal injury and will void the warranty.

●Installation ●Operation ●Maintenance

Effective 01/30/2015

INSTALLATION

1. Follow **CUTOUT DIMENSIONS** and FIG 1 for the appropriate Recessed Bi-Fold Cover installation. Cutout must be squared to the counter top and cabinet face
2. For complete installation, operation, and maintenance instructions of Atwood and Wedgewood ranges, cooktops, or slide-in cooktops, please refer to MPD52229. Installation must conform with local codes or in the absence of local codes, it must conform with the American National Standard for Recreation Vehicles ANSI/A119.2 and Article 551, ANSI/NFPA 70. In Canada installation must conform to CSA Z240.4.2-M.
3. After permanently fastening the range, cooktop or slide-in cooktop to the counter top material, place the bi-fold over the range in the recessed cavity. Position the cover so the vent section is directly above the range vent as shown in FIG 2. The front section should be flush with the front edge of the range and the gap from edge of glass to counter must be equal side-to-side
Raise the cover and fasten the vent section in the front (left and right side) with two screws. Two additional screws are to be used to fasten the rear. For Screws use #8 pan head minimum of 1/2" long with a thread suitable for the substrate material. Access holes are located at the rear of the vent. Fasten with screws through the tabs located on the bottom of the vent section. Insert the supplied plastic plugs into the access holes.
Apply the instruction label FIG 2-A to the outside of the cover over the vent section.
4. When the bi-fold cover is open, the hinges must completely lock onto the metal pins provided on the vent section Fig 2-B



LAMINATE MATERIAL MATERIAU STRATIFIÉ	MPD PART #	RA AND RV OVEN		CA AND CV SLIDE-IN	CUT OUT DIMENSIONS - DIMENSIONS DE LA DÉCOUPE					
		A	A		B	C	D	E	F	G
1/4" 6 mm	56397	16.0" 406 mm	20.0" 508 mm	3.0" 76 mm	17.75" 451 mm	20.0" 508 mm	2.31" 59 mm	24.5" 622 mm	2.13" 54 mm	20.25" 514 mm
1/32" .8 mm	56391	16.0" 406 mm	20.0" 508 mm	3.0" 76 mm	17.75" 451 mm	20.0" 508 mm	1.84" 47 mm	24.5" 622 mm	2.13" 54 mm	20.25" 514 mm

OPERATION

WARNING BURN INJURY

When cooking appliance is in use – the cover must be open and in full upright and folded position, pushed completely toward outside wall with hinges completely locked onto the metal pins provided. This prevents the cover from falling on range top during cooking.

WARNING POSSIBLE GLASS BREAKAGE

DO NOT operate any of the burner(s) with the Glass Cover in the closed position.

Operation of the burner(s) with the cover in the closed position may cause glass breakage and/or possible personal injury including eye injury and/or cuts and abrasions

DO NOT drop objects onto the glass, this may cause breakage

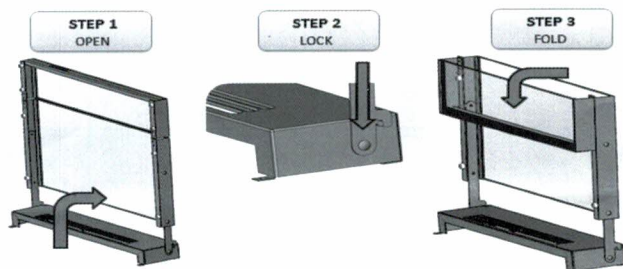
- **Never** close cover while the burners are in use.
- The oven may be used with the cover down.
- **Do not** use cover as a griddle or cooking surface.
- **Do not** use this cover on top pilot model Ranges.
- **Never** use cooking appliance while RV is moving.
- This cover is designed for use only with Atwood/Wedgewood brand RV ranges and slide-ins.

DO NOT USE WITH OTHER BRANDS of cooking appliances.

- The bi-fold cover must be closed when the vehicle is in transit.
- Glass can be easily scratched. Use caution when setting items on the top of the glass. Avoid sliding items across the glass.

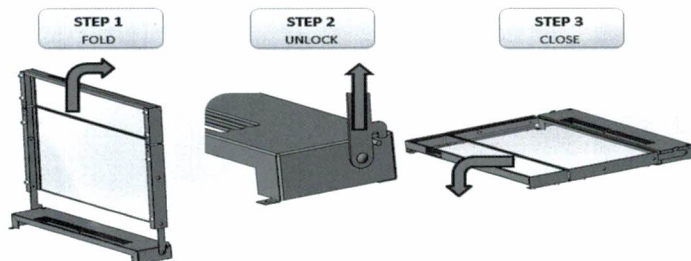
TO OPEN:

Rotate cover upwards until hinges drop down and lock onto the metal pins.



TO CLOSE:

Lift cover up so the hinges clear the metal pins, and lower the cover into the closed position.



MAINTENANCE

Periodically inspect the cover for loose, damaged, and/or broken pieces. Replace the cover if any damage is discovered.

Grease is flammable. Never allow grease to collect on top or underside of glass bi-fold cover. Keep glass surface clean.

Glass may be cleaned with household glass cleaner as needed. Always follow cleaner manufacturer's instructions. Do not use abrasive and/or acid type cleaners on the glass or metal painted surfaces

WARRANTY

ATWOOD MOBILE PRODUCTS LLC LIMITED WARRANTY

Atwood Mobile Products LLC warrants to the original retail customer of products manufactured by Atwood Mobile Products LLC and subject to the below mentioned conditions, that this product will be free of defects in material and workmanship for the two years from the original date of purchase or manufacture. For the remainder of this document Atwood Mobile Products LLC will be referred to as Atwood. Atwood's liability hereunder is limited to the replacement of the product, repair of the product, or replacement of the product with a reconditioned product at the discretion of the manufacturer. This warranty is not transferable and is intended for original purchaser only. This warranty is void if the product has been damaged by accident, unreasonable use, neglect, tampering, or other causes not arising from defects in material or workmanship. The warranty extends to the original owner of the product and is subject to the following conditions.

- 1) Atwood will repair or replace any part defective in material or workmanship, after inspection by Atwood. This warranty includes labor charges per Atwood's Flat Rate Schedule as required to remove and replace the part. Service calls to customer's location and diagnostic time are not considered part of these charges and, therefore may be the responsibility of the owner.
- 2) In the event of a warranty claim, service may be performed at any approved OEM dealer location
- 3) Parts being replaced must be shipped to Atwood "Prepaid" in first class saleable condition and identified with a return goods number, unless other arrangements have been made. Credit for shipping costs will be included with the warranty claim. The defective parts become the property of Atwood and must be returned to Atwood.
- 4) Returned goods – Goods may not be returned without our consent. Requests for returns should be made within 10 days from receipt of our invoice. If the parts being returned are not defective, Atwood reserves the right to apply a 20% restocking fee. We cannot accept material which has been custom fabricated or modified from its original design.
- 5) This warranty applies only if the product is installed, repaired, maintained and operated according to the installation/service instructions. Any deviations from these recommended specifications must be approved in writing by Atwood.
- 6) The warranty period on replacement parts is the unused portion of the original warranty period.
- 7) Damage or failure resulting from misuse (including failure to seek proper repair service), misapplication or alterations is the owner's responsibility.
- 8) Atwood does not assume responsibility for any loss of use, loss of time, inconvenience, expense for gasoline, telephone, travel lodging, loss or damage to personal property, or revenues. Some states do not allow the exclusion or limitation of incidental or consequential damages, so the above limitations or exclusions may not apply to you.
- 9) Any implied warranties are limited to the product's warranty period. Some states do not allow limitations on how long an implied warranty lasts, so the above limitation may not apply to you. This warranty gives you specific legal rights and you may also have other rights, which vary from state to state.
- 10) Replacement parts purchased outside of the original warranty carry a 90-day warranty.
- 11) Any action to enforce this warranty shall not be commenced more than 3 months after the expiration of this warranty.
- 12) THIS WARRANTY IS EXCLUSIVE AND IS IN LIEU OF ANY AND ALL OTHER WARRANTIES, EXPRESSED OR IMPLIED, INCLUDING WITHOUT LIMITATION THE IMPLIED WARRANTY OF MERCHANTABILITY AND FITNESS FOR PURPOSE.

Product Specifications for product(s) listed are designed for use for their specific application. Any other use, unless authorized in writing by the Atwood Engineering Department, voids this warranty. Original date of purchase of unit refers to the date the consumer purchases the vehicle from a dealer. Date of manufacture refers to the date the item was produced by Atwood Mobile Products.