

## DRBTM2

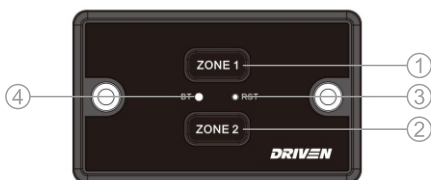
## Instruction Manual



## Welcome

Please read this manual carefully before use for correct installation and quick use. Due to the upgrade of the product, the configuration of some functions may be adjusted, please refer to the physical object.

# Product introduction



1. When power off, short press power on.

When power on, short press ZONE 1 button for volume on/off, hold press for power off.

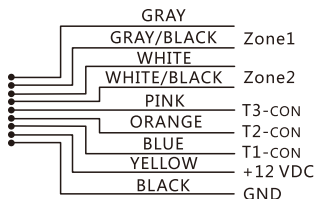
2. When power on, short press ZONE 2 button for volume on/off, hold press for disconnect the BT.

3. RST: reset button

4. BT indicator light

The flashing indicator indicates that there is no Bluetooth device currently connected, and a long light indicates that Bluetooth is connected.

## Wiring diagram introduction



# Bluetooth operation

1. After starting the machine, you should see that the BT indicator on the machine flashes. If you see that the BT indicator is always on, it means that the DRBTM2 is connected to other devices. You can press and hold the ZONE 2 button for 2 seconds to clear it until the BT indicator flashes, and then continue with the rest of the steps below.
2. Go to the Bluetooth menu of your device
3. Ensure Bluetooth is turned on.
4. Select the device named DRIVEN DRBTM2.
5. If the pairing is successful, the phone will display connect and the BT indicator on the DRBTM2 is always on.

## APP introduction

### 1. APP Download

- ① Search "DRIVEN" in the "APP store" or "APP market" of the mobile phone, and you can find the app download.
- ② Scan the QR code on the panel and install the APP.

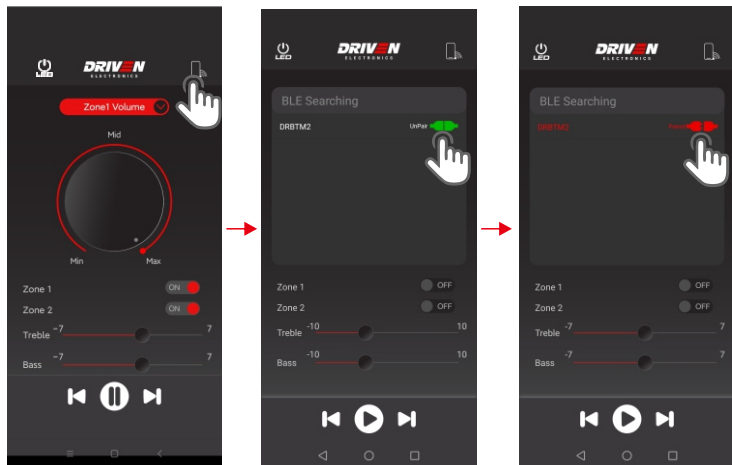
### 2. Open the software interface.



# APP introduction

3. Open the software interface and scan connect to BLE(DRBTM2).

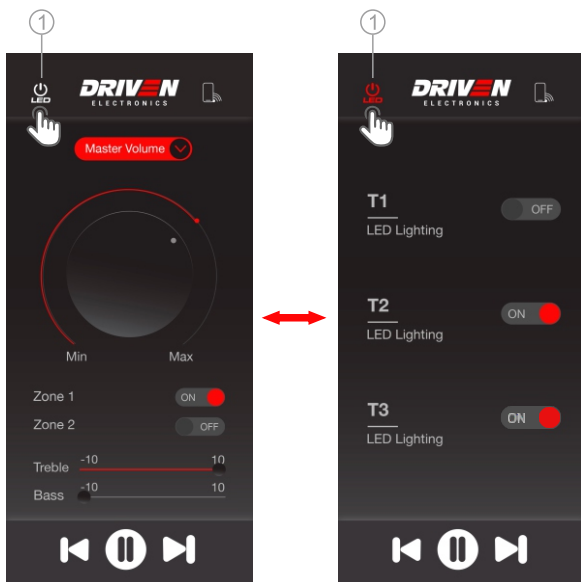
(Note: Ensure the Bluetooth connection is successful before you can control the product in the APP)



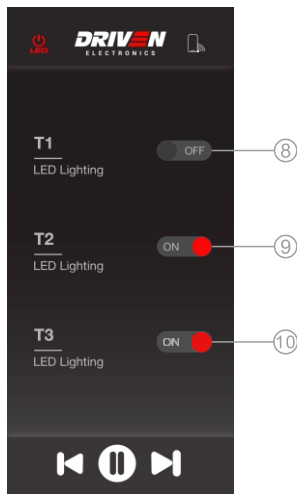
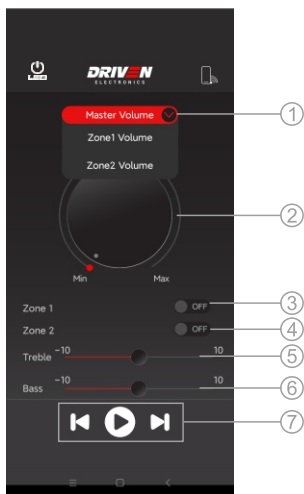
# APP introduction

## 4. Software Interface introduction

- ① Click to open the LED lighting interface  
Click to exit the LED lighting interface



# APP introduction



① Select the volume adjustment area

✎ Master volume adjustment

✎ Zone 1 volume adjustment

✎ Zone 2 volume adjustment

② Volume knob

③ ZONE 1 ON/OFF

④ ZONE 2 ON/OFF

⑤ Treble adjustment

⑥ Bass adjustment

⑦ Last song, next song, play/push

⑧ T1 LED Lighting ON/OFF

⑨ T2 LED Lighting ON/OFF

⑩ T3 LED Lighting ON/OFF