

# QUAILRIDGE

PARK MODELS • US





**FOREST  
RIVER**

A Berkshire Hathaway Company

## **BUILT AND BACKED BY FOREST RIVER**

Founded in 1996 by Pete Liegl, Forest River, Inc. has evolved into North America's largest manufacturer of recreational vehicles, cargo trailers, pontoon boats, and commercial vehicles including buses, vans, and trucks. Its portfolio includes market share leaders in every category, and it is the country's leading manufacturer of buses and vans for both the private and public sectors. Based in Elkhart, Indiana, Forest River employs 14,000+ employees in 100+ facilities in more than a half dozen states. With a commitment to excellence and a focus on customer satisfaction, Forest River is proud to be a Berkshire Hathaway company.

**NEVER  
STOP  
GOING.™**

FORESTRIVERINC.COM

Thank you for your interest in Quailridge Park Models. Quailridge Park Models are manufactured by Forest River Inc., the largest manufacturer of recreational vehicles in the world and a subsidiary of Berkshire Hathaway Inc.

Quailridge Park Models are built using only the best materials to provide you with the best value and quality for years to come. Quailridge's floorplans are carefully designed to maximize your living space and provide unequaled functionality.

The Quailridge Park Models are offered at 3 distinct levels to meet any budget:

- **Quailridge Premier** is our top-of-the-line series featuring professionally designed decors and additional features found predominantly in the luxury market.
- **Quailridge** is our mid-level series with more standard features than Summit, both inside and outside.
- **Quailridge Summit** series is the entry level lineup that offers all the amenities found in other brands without compromising quality or functionality.

All three series offer the same award-winning layouts and are constructed to our highest standards, giving you peace of mind that you have made the best choice for your park model purchase.



Quailridge Premier 39ASL-P

# QUAILRIDGE PREMIER STANDARDS AND OPTIONS

Scan with your  
smart phone  
to go to our  
website



## EXTERIOR

### STANDARDS

- 10" Welded I-Beam Chassis
- Corrosion Resistant Enclosed Underbelly
- 2" x 6" Transverse Floor Joist 16" On Center
- 5/8" Tongue & Groove Plywood Decking
- R22 Floor & Roof Insulation
- OSB Wall Sheathing W/Weather Wrap
- Thermopane Windows
- Residential Vinyl Siding
- Exterior Lineals
- 16" On Center Rafters
- Fixed Overhangs
- Perimeter Ice/Storm Shield
- 30 Year Warranty Asphalt Shingles
- Tall Loft W/Extended Dormers

### OPTIONS

- Premium Vinyl Siding
- Front Trapezoid Window
- Doorside Add-On Eave
- Barn Style Metal Roof
- White Or Clay Lineals

## INTERIOR

### STANDARDS

#### ESSENTIALS PACKAGE

- Shaw Cushion Backed Vinyl Flooring
- Carpeted Loft & Steps (US Models Only)
- Stainless Steel Kitchen Sink
- 1 Piece Fiberglass Tub/Shower
- Residential Porcelain Toilet
- 60" x 80" Serta Queen Bed w/Bedsread
- Shaker Style 2 Panel Interior Doors
- Residential Base Trim

#### OPTIONS

- Additional Recliner
- Pit Group IPO Sofa & Recliner
- Ceramic Backsplash In Kitchen
- Additional Pantry In Hall (W/A)
- Island W/Contoured Barstools IPO Table/Chairs
- Pocket Door IPO Swing Door (BR Or Bath)
- Shower IPO Tub/Shower
- Shower Door IPO Curtain

#### APPLIANCE & MECHANICALS PACKAGE

- Residential Black Kitchen Appliances (17.5 CU FT Refrigerator, 30" Gas Range, Microwave)
- Electric Fireplace

- 40,000 BTU Ducted Furnace W/Perimeter Registers
- 5,000 BTU Loft A/C (Loft Models Only)
- 20 Gallon Electric Water Heater
- Bath Fan
- Fire Extinguisher
- Smoke Detectors
- CO Detector
- Living Room Ceiling Fan

#### APPLIANCE & MECHANICAL OPTIONS

- Stainless Steel Appliances
- 18" SS Dishwasher W/A
- Stackable Washer/Dryer Prep (W/A)
- Stackable Washer/Dryer (W/A)
- 56,000 BTU Upright Furnace (W/A)
- 13,500 BTU Park Pack A/C Ship Loose
- A/C Prep For Park Pack A/C
- Central A/C Prep (56K Furnace Required)
- 16 Gallon Gas/Electric Water Heater (W/A)

#### PREMIER PACKAGE

- Smart Living Room TV
- Workstation Kitchen Sink
- Soft Close Drawer Guides
- Central Vac System W/Power Dust Pan
- Rainfall Shower System (Shower Opt. Only)
- Black Cabinet Hardware & Fixtures
- Premium Adjustable Bed Base W/Cooling Memory Foam Mattress

Stay longer. Explore deeper. Experience more under the open skies.

The Quailridge Premier US Park Models from Forest River are crafted for outdoor enthusiasts who want the comfort of home paired with the beauty of nature. Designed for extended stays near lakes, trails, and scenic getaways, each model features premium construction, weather-smart materials, and heavy-duty roofing to withstand a range of conditions. Expansive windows invite natural light and stunning views, while thoughtfully designed floorplans offer open-concept living and cozy retreats.



39ASL-P

39FLML-P

39FLML-P

39FLSKL-P

39FLSKL-P

# US QUAILRIDGE PREMIER FLOORPLANS

## QRT39BHL-P

BOX SIZE	SQ FT	BEDROOMS	BATHROOMS
36' X 11'	396	2	1



## QRT355FL-L-P

BOX SIZE	SQ FT	BEDROOMS	BATHROOMS
34' X 11'	377	2	1



## QRT39ASL-P

BOX SIZE	SQ FT	BEDROOMS	BATHROOMS
36' X 11'	396	1	1



## QRT39CBDL-P

BOX SIZE	SQ FT	BEDROOMS	BATHROOMS
36' X 11'	396	1	1



# QRT39FLML-P

BOX SIZE	SQ FT	BEDROOMS	BATHROOMS
36' X 11'	396	1	1



# QRT39FLSKL-P

BOX SIZE	SQ FT	BEDROOMS	BATHROOMS
36' X 11'	396	1	1



# QRT39UKL-P

BOX SIZE	SQ FT	BEDROOMS	BATHROOMS
36' X 11'	396	1	1



# QRT40CKCL-P

BOX SIZE	SQ FT	BEDROOMS	BATHROOMS
36' X 11'	396	1	1



# QRT40FKL-P

BOX SIZE	SQ FT	BEDROOMS	BATHROOMS
36' X 11'	396	1	1



# QUAILRIDGE STANDARDS AND OPTIONS

Scan with your  
smart phone  
to go to our  
website



## EXTERIOR

### STANDARDS

#### ESSENTIALS PACKAGE

- 10" Welded I-Beam Chassis
- Corrosion Resistant Enclosed Underbelly
- 2" x 6" Transverse Floor Joist 16" On Center
- 5/8" Tongue & Groove Plywood Decking
- R22 Floor & Roof Insulation
- OSB Wall Sheathing W/ Weather Wrap
- Thermopane Windows
- Residential Vinyl Siding
- Exterior Lineals
- 16" On Center Rafters
- Fixed Overhangs
- Perimeter Ice/Storm Shield
- 30 Year Warranty Asphalt Shingles
- Tall Loft W/Extended Dormers

### OPTIONS

- Premium Vinyl Siding
- Front Trapezoid Window
- Doorside Add-On Eave
- Barn Style Metal Roof
- White Or Clay Lineals

## INTERIOR

### STANDARDS

#### ESSENTIALS PACKAGE

- Shaw Cushion Backed Vinyl Flooring
- Carpeted Loft & Steps (U.S. Models Only)
- Stainless Steel Kitchen Sink
- 1 Piece Fiberglass Tub/Shower
- Residential Porcelain Toilet
- 60" x 80" Serta Queen Bed W/Bedsread
- Shaker Style 2 Panel Interior Doors
- Residential Base Trim

### OPTIONS

- Additional Recliner
- Pit Group IPO Sofa & Recliner
- Ceramic Backsplash In Kitchen
- Additional Pantry In Hall (W/A)
- Island W/ Contoured Barstools IPO Table/ Chairs
- Pocket Door IPO Swing Door (Bedroom or Bathroom)
- Shower IPO Tub/Shower
- Shower Door IPO Curtain

## APPLIANCE & MECHANICALS PACKAGE

- Residential Black Kitchen Appliances (17.5 CU FT Refrigerator, 30" Gas Range, Microwave)
- Electric Fireplace
- 40,000 BTU Ducted Furnace W/Perimeter Registers
- 5,000 BTU Loft A/C (Loft Models Only)
- 20 Gallon Electric Water Heater
- Bath Fan
- Fire Extinguisher
- Smoke Detectors
- CO Detector
- Living Room Ceiling Fan

## APPLIANCE & MECHANICAL OPTIONS

- Stainless Steel Appliances
- 18" SS Dishwasher W/A
- Stackable Washer/Dryer Prep (W/A)
- Stackable Washer/Dryer (W/A)
- 56,000 BTU Upright Furnace (W/A)
- 13,500 BTU Park Pack A/C Ship Loose
- A/C Prep for Park Pack A/C
- Central A/C Prep (56K Furnace Required)
- 16 Gallon Gas/Electric Water Heater (W/A)

Quailridge Park Models combine style, function, and lasting value for outdoor enthusiasts looking to enhance their campground experience.

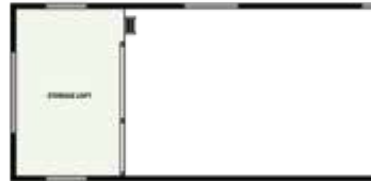
Quality craftsmanship, efficient layouts, and appealing cottage design support seasonal stays with comfort and reliability. Quailridge delivers strong construction and thoughtful details that appeal to RV and park model shoppers seeking durability and long-term enjoyment.



# US QUAILRIDGE FLOORPLANS

## QRT39BHL

BOX SIZE	SQ FT	BEDROOMS	BATHROOMS
36' X 11'	396	2	1



## QRT355FL-L

BOX SIZE	SQ FT	BEDROOMS	BATHROOMS
34' X 11'	377	2	1



## QRT39ASL

BOX SIZE	SQ FT	BEDROOMS	BATHROOMS
36' X 11'	396	1	1



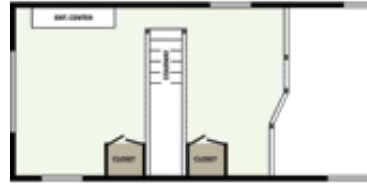
## QRT39CBDL

BOX SIZE	SQ FT	BEDROOMS	BATHROOMS
36' X 11'	396	1	1



# QRT39FLML

BOX SIZE	SQ FT	BEDROOMS	BATHROOMS
36' X 11'	396	1	1



# QRT39FLSK

BOX SIZE	SQ FT	BEDROOMS	BATHROOMS
36' X 11'	396	1	1



# QRT39UKL

BOX SIZE	SQ FT	BEDROOMS	BATHROOMS
36' X 11'	396	1	1



# QRT40CKCL

BOX SIZE	SQ FT	BEDROOMS	BATHROOMS
36' X 11'	396	1	1



# QRT40FKL

BOX SIZE	SQ FT	BEDROOMS	BATHROOMS
36' X 11'	396	1	1



# QUAILRIDGE SUMMIT STANDARDS AND OPTIONS

Scan with your  
smart phone  
to go to our  
website



## EXTERIOR

### STANDARDS

#### ESSENTIALS PACKAGE

- 10" Welded I-Beam Chassis
- Corrosion Resistant Enclosed Underbelly
- 2" x 6" Transverse Floor Joist 16" On Center
- 5/8" Tongue & Groove Plywood Decking
- R22 Floor & Roof Insulation
- OSB Wall Sheathing W/Weather Wrap
- Thermopane Windows
- Residential Vinyl Siding
- 16" On Center Rafters
- Fixed Overhangs
- Perimeter Ice/Storm Shield
- 30 Year Warranty Asphalt Shingles
- Tall Loft with Extended Dormers

### OPTIONS

- Premium Vinyl Siding
- Metal Underbelly
- Front Trapezoid Window
- Doorside add-on Eave

## INTERIOR

### STANDARDS

#### ESSENTIALS PACKAGE

- Shaw Cushion Backed Vinyl Flooring
- Carpeted Loft & Steps (U.S. Models Only)
- Stainless Steel Kitchen Sink
- 1 Piece Fiberglass Tub/Shower
- Residential Porcelain Toilet
- 60" x 80" Queen Bed
- Shaker Style 2 Panel Interior Doors

### OPTIONS

- Recliner IPO Swivel Chair
- 60" x 80" Queen Serta Bed Upgrade
- 60" Bedspread
- Nightstand
- End Table
- Pocket Door IPO Swing Door (Bedroom Or Bathroom)
- Shower IPO Tub/Shower
- Shower Door IPO Curtain

## APPLIANCE & MECHANICALS PACKAGE

- Residential Black Kitchen Appliances (17.5 CU FT Refrigerator, 30" Gas Range, Microwave)
- Electric Fireplace
- 40,000 BTU Ducted Furnace W/Perimeter Registers
- 5,000 BTU Loft A/C (Loft Models Only)
- 20 Gallon Electric Water Heater
- Bath Fan
- Fire Extinguisher
- Smoke Detectors
- CO Detector
- Living Room Ceiling Fan

## APPLIANCE & MECHANICAL OPTIONS

- Stackable Washer/Dryer Prep (W/A)
- Stackable Washer/Dryer (W/A)
- 56,000 BTU Upright Furnace (W/A)
- 13,500 BTU Park Pack A/C Ship Loose
- A/C Prep For Park Pack A/C
- Central A/C Prep (56K Furnace Required)
- 16 Gallon Gas/Electric Water Heater (W/A)

Quailridge Summit Park Models offer comfort, versatility, and refined design for RV consumers wanting an upgraded park model experience. Each floor plan maximizes space with thoughtful layouts, including loft options for additional flexibility. Strong construction, enhanced amenities, and smart use of every inch support extended stays and outdoor enjoyment.

Summit appeals to park model buyers seeking durability and value.



# US QUAILRIDGE SUMMIT FLOORPLANS

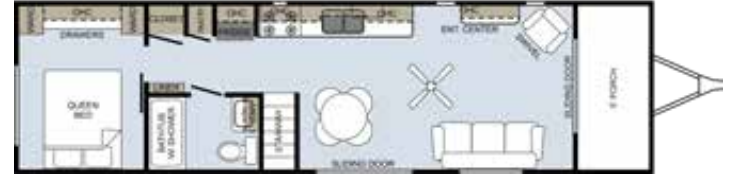
## QRT355FL-L-S

BOX SIZE	SQ FT	BEDROOMS	BATHROOMS
34' X 11'	377	1	1



## QRT39FLP-S

BOX SIZE	SQ FT	BEDROOMS	BATHROOMS
36' X 11'	396	1	1



## QRT39BHL-S

BOX SIZE	SQ FT	BEDROOMS	BATHROOMS
36' X 11'	396	2	1



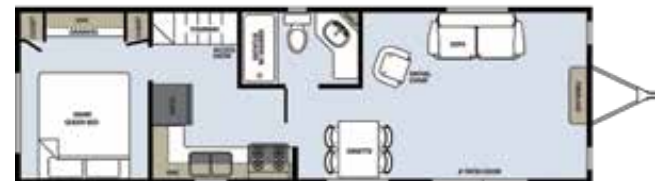
## QRT39ASL-S

BOX SIZE	SQ FT	BEDROOMS	BATHROOMS
36' X 11'	396	1	1



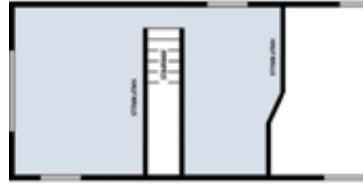
## QRT39CBDL-S

BOX SIZE	SQ FT	BEDROOMS	BATHROOMS
36' X 11'	396	1	1



# QRT39FLML-S

BOX SIZE	SQ FT	BEDROOMS	BATHROOMS
36' X 11'	396	1	1



# QRT39UKL-S

BOX SIZE	SQ FT	BEDROOMS	BATHROOMS
36' X 11'	396	1	1



# QRT39FLSK-S

BOX SIZE	SQ FT	BEDROOMS	BATHROOMS
36' X 11'	396	1	1



# QRT40CKCL-S

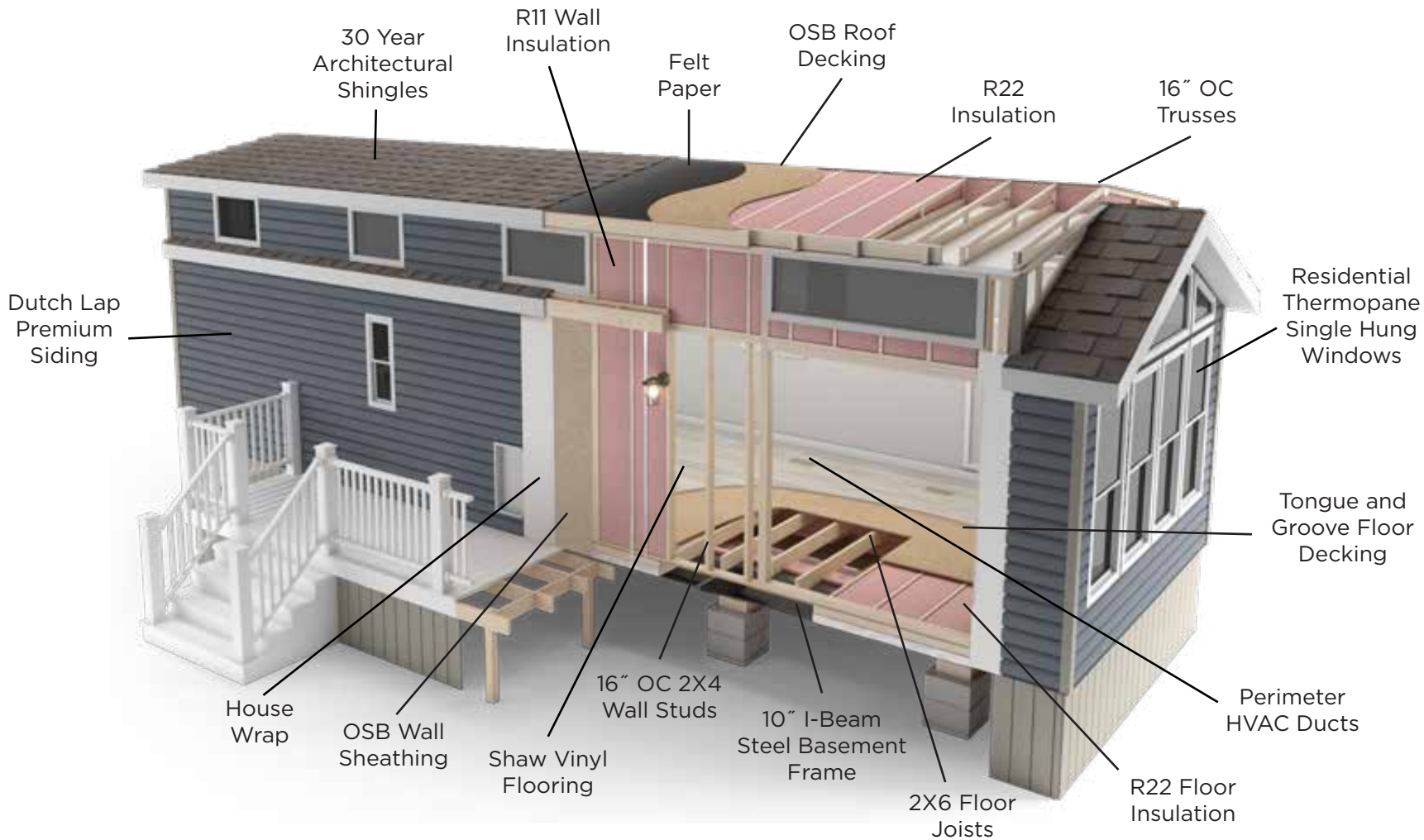
BOX SIZE	SQ FT	BEDROOMS	BATHROOMS
36' X 11'	396	1	1



# QRT40FKL-S

BOX SIZE	SQ FT	BEDROOMS	BATHROOMS
36' X 11'	396	1	1





**LEARN MORE:**

Scan this QR code with your mobile device to learn more about Forest River.

**EACH NEW FOREST RIVER PURCHASE PROVIDES:**

- ✔ Pre-delivery Inspection.      ✔ Digital Owner's Manual.
- ✔ Free Membership to Forest River Owners Group (FROG).  
Learn more at [www.forestriverfrog.com](http://www.forestriverfrog.com).
- ✔ A Contribution to Care Camps Foundation [www.carecamps.org](http://www.carecamps.org).
- ✔ 1 Year Free Roadside Assistance from Date of Purchase.

All information contained in this brochure is believed to be accurate at the time of publication. Depictions of models contained in this brochure are for illustrative purposes only. Actual product may vary from the information in this brochure due to changes in the manufacturing process and equipment. Forest River, Inc., reserves the right to make any changes without notice, including prices, colors, combinations, materials, equipment, and specifications of any model as well as the addition of new models and the discontinuance of models shown in this brochure. Therefore, please consult with your Forest River dealer and confirm the availability of any materials, combinations, designs, or specifications that are meaningful to your purchase decision. © 2026 Quailridge, a Division of Forest River, Inc., a Berkshire Hathaway Company. All Rights Reserved. Forest River, Inc. 02/26



**SPECIFICATION DEFINITIONS:**

Scan this QR code using a QR reader on your smartphone to learn RV terminology and more!



YOUR **QUAILRIDGE** DEALER